

1988 Ford F-350 4WD Dump w/Snow Blade. 7.3 Diesel 67K Orig. Miles. \$15,000.; 1997 Ford F-250, 4WD, V8 Utility Body 85K Miles, \$14,000. (410)489-4455.

1989 GMC 6000, 26,000/GVW Deisel, 5spd, 2spd, 39K/Miles, 12' Flatbed. Trailer Hitch & Hook-Up, Runs Like New. \$10,500. (215)297-8354. Bucks County.

1992 Eager Beaver Trailer, 10/ton, new air brakes, new tires, new paint, excellent condition, \$5,000/OBO. Call after 5pm, (717)456-7666.

1992 Ford F150, 4x4, V-8, 5 speed, A/C, power doors/locks & windows, 89,000 mi, 1 owner, VG condition, \$10,200. Berks Co., (717)933-5736.

1993 Chevy Deisel Truck, 4x4, 2500 Ext-Cab, 6.5 Turbo, Auto, All Options, 118K, New Rubber, Gooseneck Ball, Topper, Good Truck. \$15,000/OBO. (717)354-2281.

1993 Parker trailer, 8'x12' deckover, landscape gate, tandem axles, make offer. 717-354-8453

1994 Dodge Maxi-van, Ram 350, 15 passenger, 93,000 miles, blue interior, \$8,900. No Sunday calls, (717)597-5623.

1995 F350 power stroke diesel, crew cab, 1410 rears, 4x4, automatic, P/S, P/B, bedliner, class III hitch, excellent shape, over 100,000 miles, \$18,500. (717)273-3823.

1996 3/4 ton Chev. 4x4 Suburban LT, 40k mi, Indigo Blue, excellent condition, \$29,500. 410/836-6507.

1997 Ford F150, white, AC, automatic, bedliner, heavy duty bumper, 2WD, 46,000 miles, asking \$11,400. 717-367-9149

1997 GMC 2500, 4x4, 454 engine, extended cab, trailering package, 52,000 miles, excellent, \$20,500. 717-653-1728

3208 Cat diesel engine, \$2000. 6V53 Detroit diesel, \$1500. Can hear run, still in truck, 1-800-272-6807

40' air ride Kentucky drop deck, van-trailer, 2 curb-side doors, one driver side door, windows installed on both sides. Used to haul horses. Sides and floor rubber lined, \$2,500 firm. (717)649-5401.

4700 Gallon Mack Mnuire Truck, New Springs, Good Tires, Runs Good. \$7,500. (610)932-8986.

'87 Toyota pickup, 4 cyl, 5 spd, AM-FM cassette w/ cap, 52,000 original miles, excellent condition, \$3,675. 717-733-2873

'88 Allegheny lo-boy trailer, 10,000 GVW, 6x16 w/ ramps. (410)877-7509.

89 Chevy S10, 4.3 automatic, air, gray, nice condition, \$2995 717/532-6367.

'91 Chevy Silverado 2500 Suburban, 454 auto, PS, PB, air, AM-FM, 56,000 one owner miles, dark blue, \$10,500. 717-733-2873

'91 Dodge, Cummins Turbo Deisel 124,624/Miles, Real Nice Condition. \$11,500. (410)557-7114.

'92 Dodge Ram 250, 8 pass., 318 auto, PS, PB, dual air, AM-FM, 41,000 original one owner miles, new radials, red, excellent condition, \$8,600. 717-733-2873

'92 Ford XL F150 super cab, 300 EFI, 5 spd, PS, PB, AM-FM, dual tanks, 50,000 one owner miles, burgundy, \$7,600. 717-733-2873

'94 Ford XL HD F150, 300 EFI, 5 spd, PS, PB, AM-FM, 6,250 GVW, 1 owner, dark green, excellent condition, \$6,900. 717-733-2873



1987 International Pumper truck, DT466 motor, 13 spd., roadranger, 1997 vacuum tank, 4,000 gal., Jurop pump, exc. cond., motor just completely overhauled. \$42,500. 610/826-4381

P.J.S. Pierce's Trailer Sales
SCHALITZ TOWNSHIP, PA
(717) 949-3246

By mail R D #1, Box 360, Newmantown, PA, 17073

Pierce's Trailer Sales
Authorized Dealer for
MONARCH, MORITZ, PA INTL.
thoroughbred horse trailers, stock trailers, utility, dump, flat-bed, and equipment trailers

John E. Kreider
Specializing in Rebuildables
5348 Beagle Rd., E-town, PA 17022
717-361-9296

1995 Ford Windstar GL 3.8L V6, AT, PW, PL, PM, Tilt, Cruise, Cass. Dual AC & Heat, 72,735 Mi Hit Across Front \$3,450

1995 Plymouth Grand Voyager SE 3.3L V6, AT, PW, PL, PM, Tilt, Cruise, Cass., Dual AC & Heat 67,641 mi Hit in left front \$3,900

1992 Ford Ranger XLT 3.0L V6, 5 Spd., AC 74,479 Mi Needs Front Repaired Very Little Frame Damage Nice Truck \$1,750

1992 Olds Cutlass Ciera 3.3L V6, AT, AC, PL, Cruise, Tilt, Cass., 93,775 mi Light hit to Right Front Runs Parts Available to Repair \$1,500 w/parts

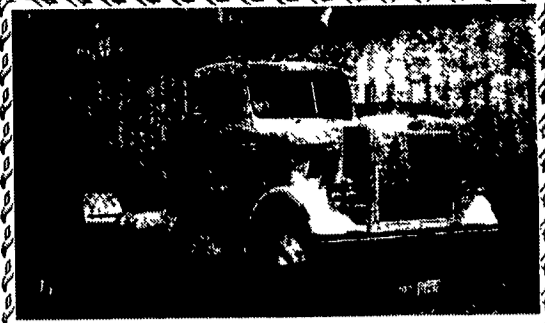
Quic'n-Easy RECEIVER HITCH BY DMI
The Latest In-Tow-Vation!

Extends 7" Swings 12" **Cushioned 2" Receiver Hitch**

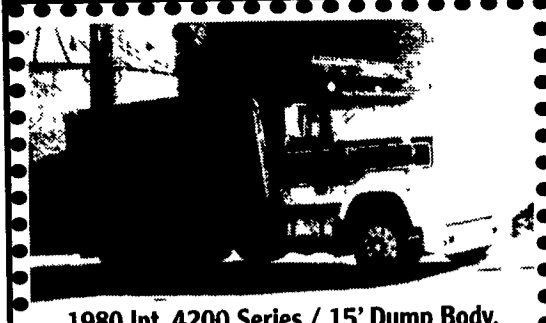
- Fits under your truck bumper mounting directly to your truck frame
- Brings the receiver to your load - extends 7" and swings 12"
- Exclusive Proximity Hook up - one person gets it right the first time
- Spring "Cush'n" takes the push/pull out of towing lowering stress on the driver and truck drive train
- Tows whatever your truck is rated to tow - exceeds Class IV certification
- Accepts a variety of adapters drawbar ball step up or step down pintle hook and weight distribution system

Never Miss a Hitch Again. DMI

Weaver Distributing 1-800-Weaver-D
RR2, Box 470, Fredericksburg, PA 17026



1984 Peterbilt 359, 400 Cummins 15 Speed Recent Rebuild With Clutch, Recent Drums and Brakes. Dual Vortec Air Cleaners; 11x24.5 Bridgestone tires/rear 80%; 11x24.5 Firestone Tires Front 90%; ALCOA Aluminium Wheels Front and Rear, Air Ride, Air Slide 5th Wheel; 3 Stage Jack; Diff Lock; 3200 PSI Wet Lines with High Pressure Filter. Overall Very Good Condition **\$19,000** Or Best Offer/Must Sell
410-893-5077 Monday thru Saturday



1980 Int. 4200 Series / 15' Dump Body. 16k Front 40k Rears. Rebuilt 6V92 with new heads & turbo. 8 new lugger caps on back. 9 speed / new air PTO. Body is grain tight with electric tarper. Pa. inspected. Very nice. **\$13,800**
570-784-0111 Days
570-784-6359 Eve

ALL STEEL REPLACEMENT TRUCK BED

STARTING AT \$595.00

7'X70"W or 80"W
8 1/2' Lx80"W or 90"W
10'Lx8'W, 12'Lx8'W

Also Available in 4'x7' and 4'x8'

5'x8' Starting at \$650

UTILITY (TILT OR GATE MODEL) SIZES.
5'x8', 5'x10' 2000# GVW - 5'x10'
6'5" x12', 3000# GVW

UTILITY WITH GATE-SIZES:
16'x77", 18'x77", 7,000# GVW

ALSO 84" WIDE!

CAR HAULER TRAILER.
16'x78" & 18'x78" includes 5' Beavertail
7,000 lb. GVW 4' self storing ramps

Quality Trailers Built Locally By "PA International"

Car Dollie

Sale \$795

19' 5-Ton Hydraulic Tilt Trailer \$3,395

'92 Ford Super Duty XLT w/12' Flatbed \$14,900

Over 200 Trailers In Stock Starting At \$475.00
T-Plates
DEALERS WANTED

Highway Hydraulic Dump BRI-MAR

5'x8', 3000# \$2,150
5'x8', 5000# \$2,495
6'x10', 7,000# \$3,195
6'x10', 10,000# \$3,495
7'x12', 10,000# \$3,995

FREE BATTERY

LOW PROFILE DUMP TRAILERS BRI-MAR

6'x10' GVW low profile dump trailers w/ landscape gate

7,000# \$3,495
10,000# \$3,895

FREE BATTERY

Starting At \$3995 w/4' Adj. Tail

GOOSENECK SIZES: 20'x8' 12,000# or 14,000# GVW, 24'x8' 14,000# GVW

Low Profile construction 16'x77" & 18'x77" 10,000 # GVW

DECK-OVER CONSTRUCTION
20'x8' w/Tail, 10,000# GVW \$3,295
20'x8' w/Tail 12,000# GVW \$3,595

KUTZ FARM EQUIPMENT, INC.
Pine Grove, PA 570-345-4882 FAX 570-315-2881
8 AM-5 PM Monday Thru Friday
8 AM-12 Saturday Or By Appointment

Whitmoyer FORD • MERCURY
YOUR FARM & PERSONAL TRUCK HEADQUARTERS

USED TRUCKS

1994 Ford Ranger Super Cab XLT
V6, AC, Cassette
\$9,900

1990 Ford Bronco Eddie Bauer
Red w/Tan Cloth Loaded w/Equipment
\$3,200

1994 Ford Bronco Eddie Bauer
Dark Blue & Tan Leather, Loaded w/Equipment, 66,000 Miles
\$15,500

1991 Ford Cube Vans
White, AT, AC, Only 49,000 Miles, Power Lift Gate
Starting from \$12,300

1990 Chevy C1500 Flatbed
Auto, Green
\$5,995

1993 Ford F150 4x4 XLT
Two-Tone Brown, AC, PW, & PL
\$10,900

Call for details... we probably have what you are looking for.

Whitmoyer FORD • MERCURY
Rt. 283 & Rheems/E-town Exit • Elizabethtown
Sales Hrs: M-F 8:30 am - 9 pm • Sat. 9 am - 5 pm
717-367-7022 or 1-800-267-2088
www.auto-locate.com/whitmoyerford e-mail us at whit@redrose.net