

Anthony L.

LANDIS

AUTO SALES

3394 Division Hwy., New Holland, PA 17557 • (717) 355-0644

Diesel



1990 Chevrolet Silverado
6 2 Diesel 4 Sp, PS PB AC TW, CC
Cass, PW, PDL 71 000 Miles,
Real Clean Tk Blue/Sil **\$7,895**



1995 Dodge Ram 1500
3 9 AT, PS, PB, AC, 77,000 Miles
Dk Blue **\$8,795**

Specializing In Vans



1998 Ford E350 Super Club Wagon XLT, 15 Pass, 6 8 Triton V8, AT/OD, Dual A/C & Heat, Privacy Glass, Tilt, Cruise, PW, PL, 5 In Stock, 26-32K mi

1998 Chevy G 1500 Express LS, 8 Pass, 5700 Vortec, AT OD, Dual A/C & Heat, Privacy Glass, PL, PS, PW, PM, Tilt, Cruise, CD, Keyless Entry, Alloy Wheels, 17 412 Mi #2931

1998 Dodge B2500 Ram Wagon SLT, 8 Pass, 5 2 Magnum V8, AT OD Dual A/C & Heat, Privacy Glass, PL, PW, Tilt, Cruise, 28,000 Mi #2933

1997 Ford E350 Super Clubwagon XLT, 15 Pass 7 3 Powerstroke, AT OD, Dual A/C & Heat, Privacy Glass, PL, PW, PS, PB, Tilt, Cruise, Alloy Wheels, 26,406 Mi #2917

1997 Dodge B3500 Maxi Ram Wagon SLT, 15 Pass, 5 9 Magnum V8, AT OD, Dual A/C & Heat, Privacy Glass, PL PW PS, PB, Tilt, Cruise Keyless Entry, 5,004 Mi #2914

1996 Ford E150 Clubwagon Chateau, 7 Pass 5 8 V8, Auto OD, Dual A/C & Heat, Privacy Glass, PL PW, PS, Tilt, Cruise, Keyless Entry, Keyless Entry, Alloy Wheels Heavy Duty Towing Package, 27,741 Mi #2879

1996 Ford E150 Clubwagon XLT, 8 Pass, EFI 4 9, AT OD, A/C, Dual Heat, Privacy Glass, PS, PB, PL, PW, Tilt, Cruise, 48,000 Mi #2913

1995 Ford E150 Clubwagon XLT, 8 Pass, 5 0 EFI V8, AT OD, Dual A/C & Heat, Privacy Glass, PS, PW, Tilt, Cruise, Heavy Duty Towing Package, 62,000 Mi #2850

1997 Ford E350 Econoline Cargo Van, 2 Bucket Seats, 5 4 Triton V8, AT OD, A/C PS PB Inside Shelving, 45,062 Mi #2911

1995 Ford E350 Econoline Quigley 4x4, 2 Pass, 5 8 EFI V8, AT OD, A/C, PS, PL PW, Heavy Duty Towing Package, 44,021 Mi #2932

1997 Ford E350 Econoline, 5 4 Triton V8 AT/OD, A/C, 9500 GVW, Shelving & Racks, 45K Mi #2911

1996 Ford E150 Club Wagon Chateau, 7 Pass, 5 4 V8, AT/OD, Dual A/C & Heat, Privacy Glass, Tilt, Cruise, PW, PL, Quad Captains, Sofa Bed, 27-30K mi.

30/4 Way
Auto Sales

770 W. Main New Holland, PA 17557
717-354-3199 • 717-355-0625 FAX
Toll Free 1-877-999-VANS (8267)

1995 DORSEY 39' FRAMELESS DUMP, Air Ride, Roll-Tarp, Air Gate, 60" Sides, Rebuilt Cylinder, Good Rubber\$23,000 OBO

FREIGHTLINER PARTS:

IH 75 Gal. Alum. Fuel Tank \$60
(2) 7-Leaf Front Springs \$65 ea.
12,000# front Axle, \$500
(2) 230/460V Welders \$400/ea
140/Gal. Torpedo Tank w/Steps \$125
150/Gal. Fuel Tank \$125
Air-Ride Axle Housings \$75/Ea.
(4) Alum. Budd Hubs \$75/Ea.
(4) Axles \$50/ Ea.
40" Sleeper Bunk \$500

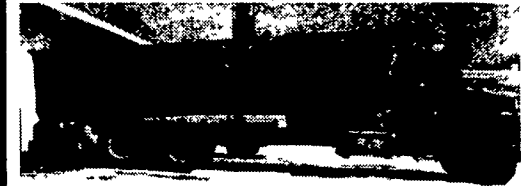
All reasonable offers considered
610/689-5771



1991 Freight Liner Tractor, 350 Cummins Engine, Jake Brake, Air Ride, 209,000 Original Miles.

1977 Fontaine 42' Drop Deck Trailer, Air Ride, Excellent Rubber.

Asking **\$28,500 O.B.O.**
Will Separate.



1977 Ford Tandem with 24' Flatbed Dump, Side Kit with Endgate, Body only 3 yrs. old.

Asking **\$11,900 O.B.O.**
814-653-2758



1998 Olds Cutlass 3100
V6, AT, PS, PB, PW, P. Mirrors, A/C, Tilt, Cruise, Cassette, CD, Leather Interior, Alloys, 12,000 Miles, Runs and Drives Easy Fix **\$5,500**
(717) 355-0644

FORD FORD FORD FORD FORD FORD FORD

KELLER BROS.

(Buffalo Springs) Lebanon, PA

717-949-2000 or 1-800-363-2767

LEBANON COUNTY'S HEAVY DUTY TRUCK HQTRS.

1996 FORD F150 XLT 4x4
AT Loaded, 34,000 Miles, Beautiful Truck



1994 FORD F350 XLT, Diesel, 4x2, AT



1997 FORD F150 SUPERCAB Flare Side
AT, Lariat, 4x4, 20,000 Miles, Just Arrived



1996 FORD F250
Reg. Cab, 4x4, AT, A/C, 1-Owner, Very Clean



1993 FORD F350 CREW CAB DUALY
7.3 Turbo Diesel, 5-Spd., Centurion Conversion, 1-Owner



1999 F250s, 350s, XLs, XLTs & Lariats. Single Axles & Duallys, 4x4's Gas or Turbo Diesels

OVER \$2 MILLION INVENTORY

Lebanon County's Heavy Duty Truck Headquarters

1993 GMC 1500 EXTEND CAB
AT, 5.7 V8, Loaded With Power Options, 53,000 Miles, Nice Clean Truck



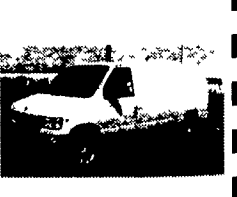
1990 FORD F250 SUPER CAB
XLT, 4x4, AT, 460 V8



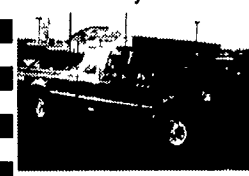
1996 FORD F250
Super Cab, H.D., 4x4, Auto., XLT



1999 FORD E350
H.D. Cargo Van, Loaded, V8, A/C, AT



1996 FORD F250 SUPER CAB, 4X4
AT, 460 Gas, XLT, Very Nice



1993-1997 FORD EXPLORERS, JEEPS
IN STOCK
Starting At \$8,200



1996 FORD F250 SUPER CAB XLT
Power Stroke Diesel, AT, 38,000 Miles



97 FORD EXPEDITION XLT
4x4, AT, Low Miles
SAVE \$\$\$



1994 FORD RANGER
4x4, XLT, AT, All Power, Like New



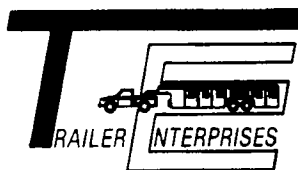
1995 FORD F250 SUPER CAB 4X4
XLT, Diesel, Low Miles



1994 FORD F150 SUPER CAB 4x4
AT, V8, 1-Owner, Just Traded



"Revvin' to take care of ALL your trailer needs"



HAS BUILT A REPUTATION



United Expressline
8x16 Cargo

Bison
616HPT

EBY Aluminum
7x20 Gooseneck

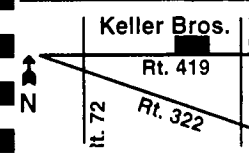
NEW & USED: STOCK - HORSE - CARGO - INDUSTRIAL - UTILITY - CAR HAULERS

Trailer Enterprises is here to serve you. We are a full service facility providing YOU with the very best service available in the industry!

TRAILER ENTERPRISES, INC.
13121 MAUGANSVILLE ROAD
HAGERSTOWN, MD 21740

Just give us a call at **(301) 791-5343.**

Hours: **8AM-5PM Monday-Friday**
9AM-12 Noon - Saturday



KELLER BROS. FORD HAS SERVED CENTRAL PENNA. AREA FOR MORE THAN 78 YEARS.

FORD FORD FORD FORD FORD FORD FORD