

**35 TRUCKS & TRAILERS**

**1997 FORD 3/4 TON HEAVY DUTY XLT**, 4x4, 351, AT, AC, PW, PL, Tilt Cruise, Stereo cass, only 34,000 Miles Red, Alloys, Bed Liner, Factory Warr **SALE \$20,900**

**1992 FORD F-150 XLT 4x4**, V8, 5 Spd, Reg Cab, AC, PW, PL, Alloy Wheels, 2-Tone Paint, New Exhaust, Tune-Up, Clutch, Insp **\$9,500**

**1991 CHEV 2500 SILVERADO 4x4**, 6.2 Diesel, AT, AC, Tilt, Cruise, 71,000 Miles, Local One Owner, New Tires, Maroon, Awesome Truck **\$12,900**

**1990 DODGE RAM 3/4 TON LE**, 4x4, "Cummins Turbo Dsl", AT, AC, PW, PL, Tilt, Cruise, 160,000 Miles, Blue, New Insp, New Tires **\$8,400 SALE \$7,800**

**1985 3/4 TON 2WD 6.9 LTR DIESEL**, AT, AC, PW, PL, Tilt, Cruise, 1-Owner, 2-Tone Brown, 121,000 Miles **\$5,900 SALE \$5,400**



**Custom Deluxe 30 '86 Chevy** rollback 17', good shape, 100,000 original miles. Reasonable price. 610/286-6007

'95 Dodge Ram 2500 8 pass., 318 Magnum, auto, PS, PB, air, AM-FM, 37,000 miles, burgundy, excellent condition, \$11,900. 717-733-2873

'96 Dodge SLT 1500, short whl. base, 8 pass., 318, magnum, auto, PS, PB, PW, PDL, cruise, tilt, air, AM-FM cassette, new radials, excellent condition, \$10,500. 717-733-2873

'96 Dodge Ram 3500, 12 pass. van, 318 magnum, auto, PS, PB, air, AM-FM, blue, 63,000 miles, excellent condition, \$10,900. 717-733-2873

Eby aluminum flatbed, 18'x102", 4'-headboard, 5-cargo straps, like new, \$3500. IH diesel, 7.3, very good. GM 8.2 engine, good. 610-944-9871

**FORD AEROSTAR 1993**, 4x4, 115K miles, needs TLC, \$2,500. 410-833-9091

Ford 1991 F250XL diesel, 60,000 miles. 215/822-2346 after 5pm.

**"Good Used Equipment"**

- 1984 IH 18' Stake DT466 **\$4,900**
- Reinco 1500 Gallon Hydromulcher, 6 Cyl Ford Ind Engine, Needs Some Work Rebuilt Pump **\$5,500**
- Brillion Seeder 5', Gd Cond **\$1,200**
- Jacobsen Slice Seeder, 4' **\$900**
- 2 York Rakes **\$500 ea**
- 2 - 6 Ton Trailers, Gd Rubber **\$1,200 ea**

Ask For Larry

**609-429-9796**

**QUALITY USED TRUCKS**



**96 FORD F250 SUPER CAB** 4x4, Power Stroke Diesel, AT and More



**97 FORD F350 CREW CAB** DUALY 7.3 Power Stroke, At, XLT, 24,000 Miles Black. #P3917



**HEAVY DUTY SPECIALTY TRUCKS** Available For Immediate Delivery



**97 FORD F250 SUPER CAB 4X4** 7.3 Power Stroke Diesel, XLT, Only 5,000 Miles (Like New) #PF3910



**97 FORD F250 SUPER CAB 4x4** 7.3 Power Stroke Diesel, AT, One Owner (Nice Truck) #P3922



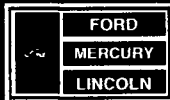
**97 FORD F250 SUPER CAB** 4X4 XLT, 460 V8, White #2346L



**99 F350 CC DUALY 4X4** (2) 99 F350 CC 4x4s (2) 99 F250 SC 4x4 All Diesel AT A/C

**1999 FORD E150 and E250 ECONOLINE VANS** In Stock **SELLING UNDER INVOICE**

Unless the Chapman Emblem is on Your Car or Truck... You Probably Paid Too Much!



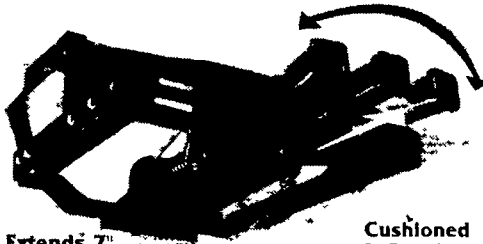
**CHAPMAN LEBANON**

20th & CUMBERLAND STS. - RT. 422 WEST  
9-9 DAILY: 9-5 SATURDAY • CHAPMAN HOTLINE (717) 272-7671



**Quic 'n Easy RECEIVER HITCH BY DMI**

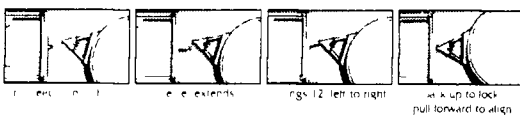
The Latest In-Tow-Vation!



Extends 7" Swings 12" Cushioned 2" Receiver Hitch

- Fits under your truck bumper mounting directly to your truck frame
- Brings the receiver to your load - extends 7" and swings 12"
- Exclusive Proximity Hook up - one person gets it right the first time
- Spring Cush n takes the push/pull out of towing lowering stress on the driver and truck drive train
- Tows whatever your truck is rated to tow - exceeds Class IV certification
- Accepts a variety of adapters drawbar ball step up or step down pintle hook and weight distribution system

Never Miss a Hitch Again. **DMI**



**Weaver Distributing 1-800-Weaver-D**

RR2, Box 470, Fredericksburg, PA 17026

**98 Chevy Astro AWD**, 8/Pass, White, 4 3 V-6, AT, AM/FM/Cas., AC, PW, PL, CC, Tilt, Airbags 31,940 Mi **\$16,900**

**97 Ford F-150 XL**, Black, 4 2 V-6, 5 Sp, AM/FM/Cas, AC, Airbags, 56,973 Mi **\$11,800**

**96 Honda Passport 4x4**, 4 Dr, Black, 24V V-6, 5 Sp, AC, PW, PL, CC, Tilt, AM/FM/CD-Changer, Airbags, 83,736 Mi **\$11,900**

**96 Ford Ranger XLT**, Red, 4 Cyl, 5 Sp, AM/FM/Cas, AC, Airbags, 45,290 Mi **\$7,900**

**96 Jeep Grand Cherokee Laredo 4x4**, Silver, 5 2 V-8, AT, AM/FM/Cas, AC, PW, PL, CC, Tilt, Pwr Seats, Leather, Black Leather, Keyless Entry, 72,900 Mi **\$14,800**

**96 Chrysler Town & Country**, 5 Dr, 7/Pass, Green, 3 8 V-6, AT, PW, PL, CC, Dual AC, AM/FM/Cas /CD, Child Seats, Keyless Entry, 49,725 Mi **\$15,900**

**95 Chevy E-10**, Ext Cab, Green, 4 Cyl, 5 Sp, AM/FM/Cas., AC, Airbag, 68,281 Mi **\$8,900**

**95 Geo Tracker LSi 4x4**, Conv, Black, 4 Cyl, 5 Sp, AM/FM/Cas., AC, Tilt, 43,935 Mi **\$7,900**

**94 Dodge Ram 2500 4x4**, Green/Gray, 318 V-8, AT, AC, CC, Tilt, AM/FM/CD, Airbag, 66,278 Mi **\$15,600**

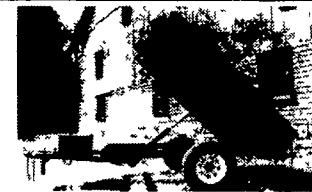
**93 Chevy Astro EXT**, Cargo, White, 4 3 V-6, AT, AM/FM/ST, 67,650 Mi **\$7,800**

**92 Ford F-250 XLT**, Ext Cab, 4x4, Gray/Red, 460, V-8 AT, AM/FM/ST, AC PW PL CC, Tilt, 102,201 Mi **\$11,800**

**Brubaker's Auto Sales Myerstown, PA 717-866-5237**

**HOSTETLER Truck Bodies & Trailers 717-667-3921**

Milroy, PA - Located between Lewistown And State College on Rt 322 in PA.



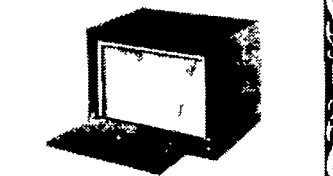
**Dump Trailers**  
5x8 Single Axle 5000# GVW **\$2,650**  
6x10 Tandem Axle 7000# GVW **\$3,495**  
6x10 Tandem Axle 10 000# GVW **\$3,655**



**1986 Dodge 3/4 Ton Dump**, New Aluminum Dump Body & Hoist, V8, Gas Engine Automatic, Power Angle Plow **\$7,995**



**18 Deck Over Trailer 16' Flat 2** Dovetail with 5' Ramps 10 000 Lg GVW Adj Coupler **\$3,895**

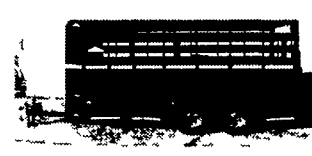


**Tool Boxes**  
36"x18"x18" **\$162**  
24"x18"x18" **\$146**  
30"x18"x18" **\$155**  
42"x18"x18" **\$169**  
48"x18"x18" **\$178**

**Financing & Leasing Available**



**Eby Trailers** In Stock, Both Gooseneck & Bumper Pull **Ask About 6.95% Financing or \$150 Cash Back**



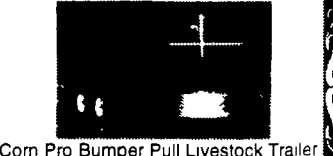
**New Design Moritz Livestock Trailers**  
Semi Round Front New Sids and Rear  
6x16 7000# GVW **\$3,495**  
6'8" x 16 Long 7000# GVW **\$3,795**



**Skid Loader Trailers**, 82" Between the Fenders 10 000# GVW  
14' Long **\$2,545**  
16' Long **\$2,680**  
18' Long **\$2,815**



**Hostetler 4 Wheel Cart 5'x8'**, Plywood Floor, Auto Type Steering, Rear Axle Brakes Tongue Mounted Hand Brake, Removable Sides, 9" Tires **\$1,295**



**Corn Pro Bumper Pull Livestock Trailer**  
Corn Pro, Rubber Torsion Axles Treated Pine Floor  
6x16 3500# Axles **\$3,495**  
6'8" Wide x 16 Long 3500# Axles **\$3,725**  
6'8" Wide x 16 Long 6000# Axles **\$4,045**

**KEIM (717) 768-8225 (800) 223-KEIM**  
RT. 30 Lincoln Highway East Paradise, PA 17562

**YOUR TRUCK, VAN & 4x4 HEADQUARTERS 1-800-223-KEIM**



**88 CHEVY SILVERADO C1500** Reg Cab, Long Bed, 6 Cyl, 5 Sp, A/C, 77,000 Mi



**94 GMC EXTENDED CAB** 4WD 1500, 350 V8, AT, A/C, Custom Leather, 60,000 Mi



**97 CHEVY EXTEND CAB** Cheyenne, K3500, 4x4, Dually, Red, 454 V8, AT, A/C, Only 7,000 Mi



**95 CHEVY BEAUVILLE** 12 Pas Window Van, V8, AT, A/C, PW, PL, Cassette



**98 CHEVY EXPRESS** 15 Pass Van, White, V8, AT, A/C, 17,000 Mi



**94 CHEVY SUBURBAN** K1500 Silverado, Teal/Silver, V8, AT, Dual A/C, Only 47,000 Mi



**88 GMC 16' BOX** 28,000 GVW, 366 V8, 5 Spd, 2 Sp Rear, Only 55,000 Mi



**95 CHEVY G20 CARGO VAN** White, V8, AT, A/C, 45,000 Mi