

1983 DM rolloff tandem w/ hyd. hoist, nice truck \$16,900. (3)-MH Mack caver's, 1985, 88, 89. (2)-single axles, 1-tandem, 300 engine, 10-spd. trans, nice trucks, starting at \$5500. 610-944-9871

1984 GMC 6000 series dump truck, coal chute, 8-ton hoist, new tires, '95 Hudson trailer, 10,000 GVW w/ramps. 717-933-5297

1984 Mack Superliner, new way air rde, 350 Mack air to air, 9sp Mack, 38,000# rear, 550,000 miles, VG condition, \$15,000. 1(800)422-9377.

1985 F350, automatic, 12' stake dump, 11,000 GVW, 8' snowplow, mini spreader, 101,000 miles, good condition, \$6500. 215-657-7667

1985 GMC 7,000, 33,000/ GVW 5spd, 2spd, Air brakes Dump Truck 10' Body, Looks/Runs Good, \$10,000. (215)297-8354 Bucks County.

1985 Marmon Conventional, w/Air Ride & Sleeper. Cummins NTC 400 Engine. Fuller 13spd Trans. \$10,000/Neg. (717)545-3279.

1986 Dodge PU, D-250, 4x4, 4spd, V-8, good condition, new inspection/ tires, 82,000 miles, \$4,300 OBO. (717)776-6143.

1986 F-350 Pick-Up Extended Cab, 4WD, 4spd, 7.3 Diesel; 100 Gal Fuel Tank w/Electric Pump. Utility Boxes Each Side \$4,200. (908)996-3888.

1986 F-350 black diesel, w/ Eby 7 1/2' x11' flatbed w/ sides & bows, 5-wheel & standard towing, all new tires, inspected, 138,000 miles, runs good, \$4500. 717-444-3788 anytime

1986 Ford Cargo C & C, CF7000 Wheelbase 189 C.A. 120", Trans 5spd, Axel 2spd, GVW 29,500, Ford Diesel Engine. Please Phone Joe Sheetz, Bill Martz or Rick Koller. (717)755-2911.

1986 Ford Cargo 7000, 6.6 Ford, 185hp, Allison automatic, 19' flatbed, \$3800. Evenings 814/942-3821.

1987 E-350, 15-pass. van, automatic, AC, PS, PB, 351 gas, 72,000 miles, good shape, \$6800. 215-657-7667

1988 24,000 GVW Tag-A-Long Trailer, Dual Wheel, Tandem, \$2,000. (215)297-8354. Bucks County.

1989 Ford pickup, only 75,000 miles, R title, banged up, but runs good! Cheap! \$1400. Zeisloft Equipment 1-800-919-3322

1989 GMC 6000, 26,000/GVW Diesel, 5spd, 2spd, 39K/Miles, 12' Flatbed. Trailer Hitch & Hook-Up, Runs Like New. \$10,500. (215)297-8354. Bucks County.

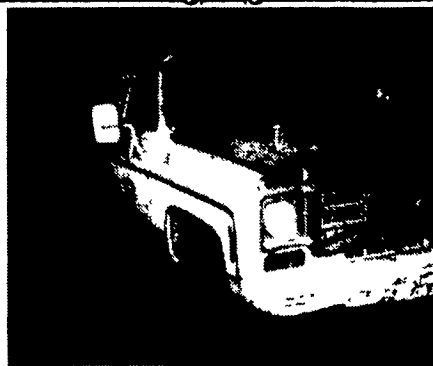
1990 Chevrolet P30series walk-in van Grumman body, 350 engine, VG condition, \$7800. 609/935-8582.

1992 Eager Beaver Trailer, 10 ton, new air brakes, new tires, new paint, excellent condition, \$5,000 OBO. Call after 5pm, (717)456-7666.

1992 Ford F-350 Crew Cab, 4WD, XLT Package, P/W, Automatic, Cruise, Air, Camper Package, Airbags, LOADED! 64K/Miles, \$16,000 (610)856-0018.

1993 Ford F-350 XLT, Dually, Super-Cab, LOADED! 123K, 5spd w/Over-Drive. New Inspection, \$12,500. Clean Truck (717)396-0356.

1994 Dodge Maxi-van, Ram 350, 15 passenger, 93,000 miles, blue interior, \$8,900. No Sunday calls, (717)597-5623.



'77 Chev C30
12 Ft. Flatbed Good Farm Truck
\$500 OBO (717) 336-5459

'94 F-250, XL, auto, 4x4, A/C, P/S, P/B, bedliner, plowed twice, good solid work truck, 94,000 miles. \$12,500, add \$1,500 for 7.6 Western plow.

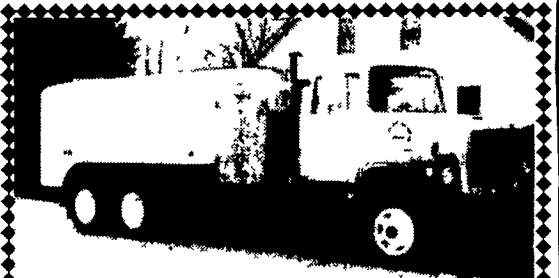
'90 IH 4700, 7.3 diesel, Allison automatic, air ride & brake, 16' box, 25,500 GVW, truck runs great \$8,500.

'88 IH 1954, DT466, 5/2 trans, 20' Jerr Dan wood floor roll back with dock leveler, great for equipment movers, has new style hood, clean, runs great \$14,500.

'88 F-700, 33,000 GVW, 16' dumping rack, hitch, air, 9 lands, 210 HP, 90K, 6 spd 10 20 tires, nice shape, \$13,500

Call 973-347-1101

Ask for Jim



1980 LN 9000 Ford 3208 CAT 215 HP - 10 spd. R/R 45,000 GVW with S/S 2500 Gal Carry Cool Tank with Lambordini Diesel Motor and Cat High Pressure Washer Truck was used for cleaning Barns - The Truck is very clean and Ex. Cond:

Martin's Used Trucks & Equipment
(717) 299-6200

EBY
USED EQUIPMENT
LIVESTOCK BODIES

- 12'x92"x6'4" Eby
- 15'X92X6'6" Eby
- 9'x82"x6' Eby
- 14'x96"x6'3" Eby
- 9'x94"x6'9" Eby
- 19'x96" Eby w/Deck Rail
- 10'x96x6'6" Eby
- 24'x96"x6'6" Eby w/Deck Rail

GOOSENECK

- 1996 Wilson 24'x8'x7'6" w/deck Rail
- 1988 Eby Ruffneck 26'x8'x7'
- 1994 Eby Wrangler 20'x7'x6'6"
- 1997 Hart Aluminum Gooseneck 24'x7'x6'6", Like New
- 1996 Wilson 24'x8'x8'
- 1997 Eby Ruffneck 24'x8'x6'9"

M.H. EBY, INC.

1194 Main St.
(Route 23)
Blue Ball, PA 17506
(717) 354-4971
(800) 292-4752

4435 State Route 29
West Jefferson, OH
43162
(614) 879-6901
(800) 752-0507

1994 GMC top kick Low-Pro, no CDL needed, 3116 Cat turbo motor, 36" sleeper, Allison automatic, 69,500 miles, \$17,900. 570-649-6436

1995 Chevy 1500 4x4 Silverado, long bed, 350, AT, loaded, towing package, excellent, 51,000 miles, \$15,000. 717-548-3979



1984 Peterbilt 359, 400 Cummins 15 Speed Recent Rebuild With Clutch, Recent Drums and Brakes. Dual Vortec Air Cleaners; 11x24.5 Bridgestone tires/rear 80%; 11x24.5 Firestone Tires Front 90%; ALCOA Aluminium Wheels Front and Rear, Air Ride, Air Slide 5th Wheel; 3 Stage Jack; Diff Lock; 3200 PSI Wet Lines with High Pressure Filter. Overall Very Good Condition **\$19,000** Or Best Offer/Must Sell

410-893-5077 Monday thru Saturday

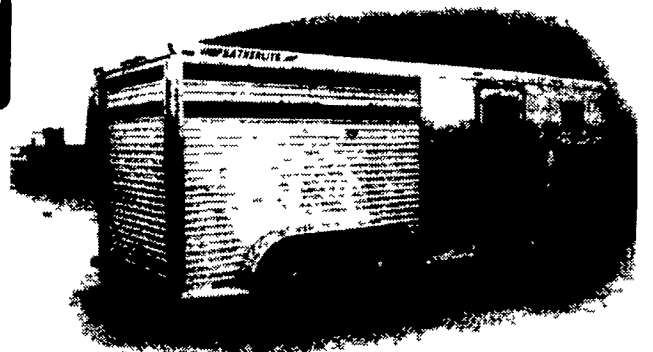


FOR SALE

8 FT. DUMP BODY, Ready To Go On Your Truck, Cap Protector, Coal Chute, Hydraulic PTO Lift **\$3,000**
Call 717-274-2000
Car Village - Lebanon, PA

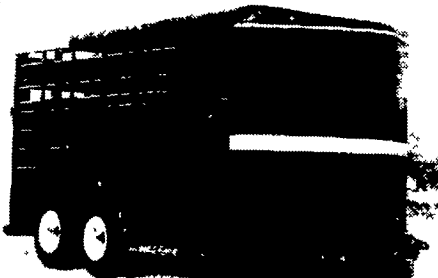


Gooseneck Horse Trailers
Model 8534
4 Horse Slant



16" STEEL STOCK TRAILERS

Model 530J



ALUMINUM STOCK TRAILER



4161 Oregon Pike, Ephrata, PA 17522

STAR Chevrolet • Oldsmobile

627-1220 or 859-7700

AT THE BROWNSTOWN EXIT OF RT. 222

IN ALUMINUM BODIES
EBY BUILDS IT

M.H. Eby custom-builds aluminum truck bodies for the agri-transportation market. Nobody offers more sizes and options in

- **FLATBED BODIES** - Lengths to 32', choice of 5 widths
- **GRAIN BODIES** - Lengths to 24', landscape and general purpose dumps to 12'
- **LANDSCAPE BODIES** - Lengths to 12', *We'll build to your specs!*

For greater payload capacity, Eby's aluminum design is equal in strength to steel and up to 40% lighter. Our corrosion-resistant components never need painting. That means minimum maintenance, improved appearance and higher resale value.

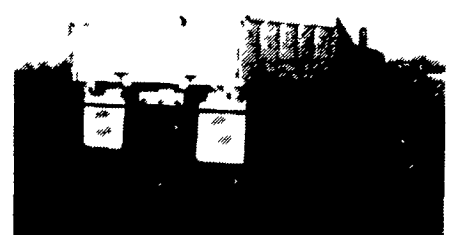
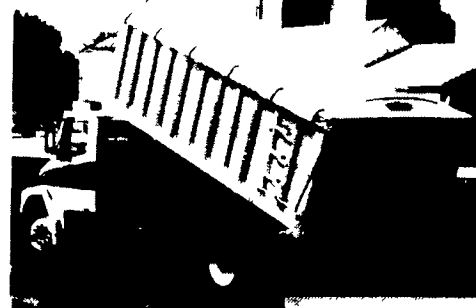
Eby products have superior standard features. And we offer customer options for virtually any application. Agriculture is your business - **building bodies to haul it is ours.**



1194 Main Street
Blue Ball, PA 17506



Let EBY custom build one for you.



800-292-4752