

# Five-Acre Contest Announces 1998 Award Winners

(Continued from Page 20)

## Crop Management Programs of the 1998 Ear Corn Champions

HARVEST CLASS HARVEST SIZE	EAR CORN REGULAR / HAND	EAR CORN REGULAR / MACHINE
PLACE	CHAMPION	CHAMPION
NAME	Lee Glazier	John Tabaj
COUNTY	Fulton County	Fayette County
HYBRID	Hubner 3505	Agway 767
YIELD	222.0	154.5
% DOWN	0 0	0 0
1997 CROP	Corn	Corn
TILLAGE	Moldboard	Chisel Plow
PLANTING DATE	5/10/98	
YIELD CHECK SAMPLE SIZE	0 03	0 51
HARVEST METHOD	hand	machine
ROW WIDTH	30	38
CULTIVATIONS	0	0
HERBICIDE		Bicep
SOIL INSECTICIDE	Lorsban	none
TRIPS ACROSS FIELD	4	8
PLANTING DEPTH	1 5	2
SIDE DRESS	150	125
STARTER	150/10-34-0	250/8-32-16
MANURE	Liquid Gold	none
TOTAL N APPLIED (lb/A)	110	100
GRAIN MOISTURE	17 5	23 7
% BARREN	2 6	4 5
PLANT POPULATION	21572	22193

Farm Name	Bu/A	% H2O	Plant Pop	Stand/Planted	% Down	% Barren	Row Width	Applied Manure	Starter Fertilizer analysis	Fertilizer rate	Corn	Hybrid	Harvest Class**
Beaver County													
Norman Jodkinos	155.7	28.8	26630	96%	1.9	3.4	30	dairy	12-24-24	250	Pioneer	3394	scr
Eider Vogel	115.7	29.0	22078	90%	1.2	3.7	38	dairy	19-19-19	250	Gnes	500	scr
	135.7	28.9	24354	93%	1.5	3.6	34			250			

Berks County													
David Shantz	212.1	20.8	26041	88%	4.1	1.3	30	dairy	8-32-16	300	Pioneer	3194	scr
Herman Manbeck	197.8	20.0	24634	87%	5.7	1.6	30	hog	20-10-10	200	Pioneer	11Y18	scr
Kyle W. Kurtz	17.7	0.4	10100	77%	1.9	1.0	30	cow	11-7-0	150	Pioneer	11Y18	scr
Jon Stutzman	169.8	19.4	28874	94%	6.9	1.7	30		9-18-9	100	Doebler's	636XY	scr
Lloyd Zook	160.1	21.8	21448	77%	7.7	3.8	30	steer	7-21-7	150	Pioneer	3394	scr
David Tuttle	145.4	18.3	24478	91%	7.4	1.8	30	hog	7-21-6	150	Pioneer	33A14	scr
Kenneth L. Schlegel	144.5	19.0	24190	93%	6.0	4.9	36	dairy	0-40-11	130	Pioneer	32K61	scr
Ronald L. Kurtz	140.0	26.5	23571	85%	4.4	3.8	30		11-52-0	150	Pioneer	33Y18	scr
John H. Stump	136.4	24.9	24448	81%	1.7	2.2	38	cattle	5-15-15	55	Mycogen	7250	scr
	163.9	21.9	24302	87%	5.3	2.7	32			154			

Blair County													
David C. Hieman	181.8	27.0	30041	100%	0.0	1.1	30	dairy	8-40-12	100	Pioneer	33G26	scr
	181.8	27.0	30041	100%	0.0	1.1	30			100			

Bradford County													
William Keeney	135.1	23.5	26420	88%	0.4	10.9	30	dairy	10-20-10	100	American	A105	scr
	135.1	23.5	26420	88%	0.4	10.9	30			100			

Bucks County													
Joseph F. Matejk	202.6	21.2	33606	105%	6.6	2.6	30		8-32-16	220	Hylest	HT4612	scr
Robert Rook	193.7	21.1	26364	98%	2.3	0.9	30		7-21-6	600	Pioneer	35N05	scr
Matthew Mazmuck	177.4	28.6	28048	95%	2.1	2.1	30		6-28-28	400	Dekalb	618B1	scr
William Rook	176.6	20.4	27148	101%	7.8	0.7	30		7-21-7	600	Pioneer	33Y18	scr
Kenneth Beer	157.5	19.0	25259	93%	12.1	3.2	30		7-21-6	35	Pioneer	3335	scr
Harry Atkinson Jr	127.5	16.8	24342	94%	21.9	2.6	30		7-21-7	275	Pioneer	3572	scr
David Walters	103.5	27.4	25510	93%	1.0	6.4	30		8-32-16	225	Gard	8220	scr
	162.7	22.1	27183	97%	7.7	2.7	30			336			

Butler County													
Sid Schiever	160.9	24.5	26535	95%	1.3	2.3	34	dairy	8-44-16	180	Pioneer	3394	scr
Eugene Graham	159.3	23.6	21717	78%	1.7	2.6	36		8-32-16	250	Pioneer	3394	scr
	160.1	24.1	24126	86%	1.5	2.4	35			215			

Cameron County													
Earl Reed	154.9	21.0	26236	99%	0.0	3.1	36	steer		250	Fielder's Ch	8280	scr
Jeffery E. Reed	133.6	19.0	31243	125%	0.0	6.1	36	steer		250	Pioneer	3905	scr
	144.3	20.0	28740		0.0	4.6	36			250			

Chester County													
Nelson Beam	208.6	20.8	29434	92%	3.5	1.6	30		10-34-0	50	Pioneer	33V08	scr
Jeffery Mitchell	192.6	19.5	25140	94%	11.1	4.3	30		10-34-0	250	Pioneer	3335	scr
	200.7	20.1	27287	93%	7.3	2.9	30			150			

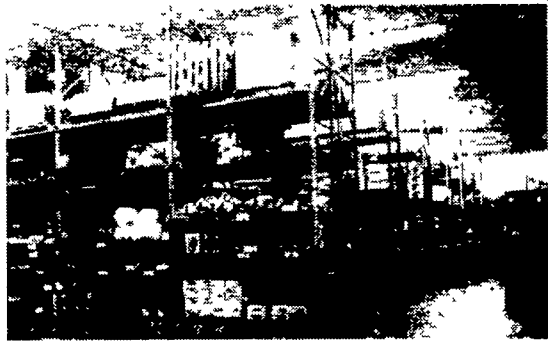
Clarion County													
Sandy Ridge Farms	149.2	20.0	29230	94%	2.7	2.5	30	dairy	11-52-0	200	Pioneer	37M81	scr
	149.2	20.0	29230		2.7	2.5	30			200			

(Turn to Page 22)

# Farmer Boy Ag Systems Inc.

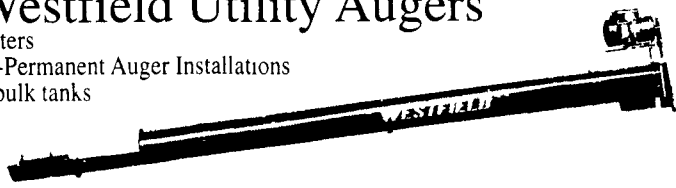
**fully stocked  
warehouse**  
**1-800-845-3374**

**SAME DAY SHIPPING**



## Westfield Utility Augers

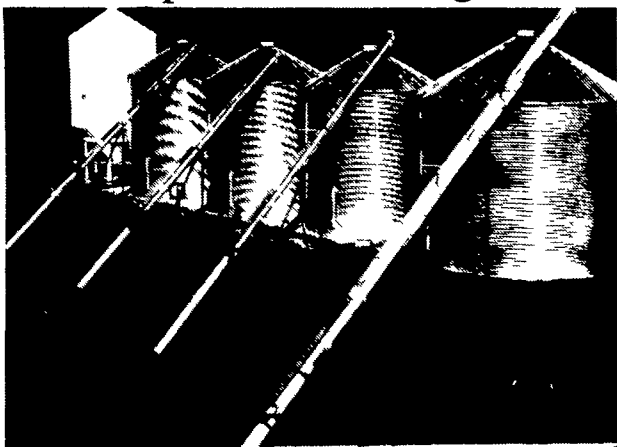
- 4"-6"-7"-8"-10" Diameters  
For Permanent or Semi-Permanent Auger Installations
- At your grain bins or bulk tanks
  - In drying set-ups
  - Around the dairy barn
  - In feedlots
  - At feedmills or elevators



## Westfield Transport Grain Augers

Available In  
6", 7", 8" & 10"

- Gas Motor Drive,
- Electric Motor Drive,
- PTO Belt Drive,
- or
- PTO Shaft Drive



**Hog and Poultry Contracts Available**  
**Contact Us Today!**

Full Line of Parts in Stock For Your  
Hog, Poultry and Cattle Needs

Hours: Mon. thru Fri. 7-5:30  
Sat. 7:30 - Noon

## Farmer Boy Ag Systems Inc.

410 East Lincoln Avenue, Myerstown, PA 17067  
717-866-7565 • 1-800-845-3374

Swine & Poultry Systems Specialists

24 Hour Service  
3/6/99 CT

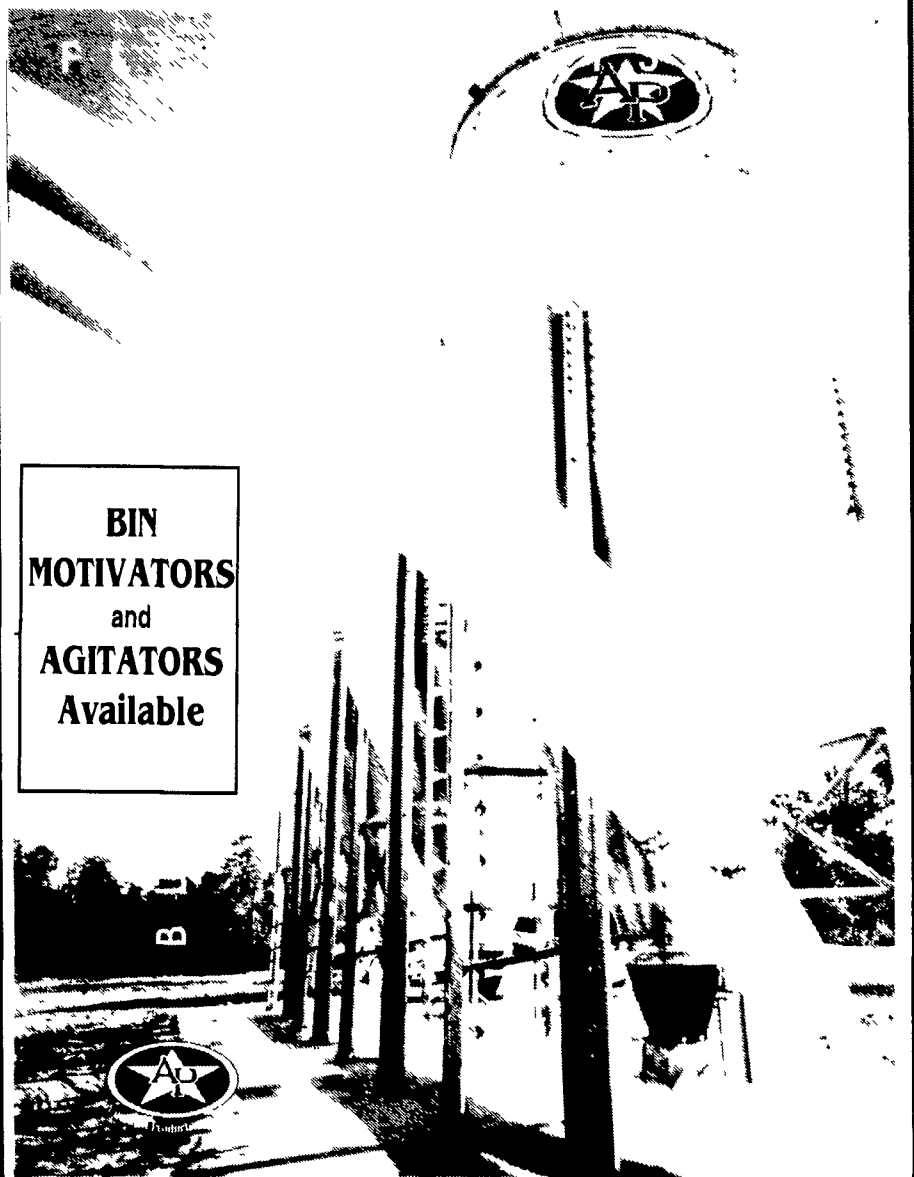
Check Our Warehouse Prices  
WE SHIP UPS



A Division of GST

## Bulk Feed Bins with Flex-Flo™ Feed Systems

A-P's bulk feed tanks and Flex-Flo™ Systems perfectly illustrate the attention to detail that quality demands and provides the Dairy, Hog and Poultry farmers with the finest storage and feeding equipment available  
**We Assemble, Deliver and Set-up bins on your farm.**



**BIN  
MOTIVATORS  
and  
AGITATORS  
Available**