

# POLE BUILDINGS

- Horse Barns
- Riding Arena
- Equipment Storage
- Garages
- Commercial Buildings



Unlimited Structures, Inc.  
800-858-7297



## Tioga County Logs

- 40 year old Blue and Norway Spruce logs at the roadside, top end 4"
- Log cabin logs, standing red pine 1956 plantation 36' +/-

Maple Hill Farms  
P.O. Box 648, Lewisburg, PA 17837  
Moose Craul  
Phone - (570) 524-0791 - Fax

## Koser Building Materials

FOR YOUR HOME IMPROVEMENT NEEDS

LOCATED NORTH OF ELIZABETHTOWN  
OPEN MON -FRI 8 TO 6; SAT 8 TO 3

- Kitchen Cabinets
- Plywood & Waferboard
- Asphalt Roofing Shingles
- T-1-11 Siding
- GP Insulation
- Railroad Ties
- Shutters
- Replacement Windows
- Vinyl Siding

**Metal Roofing**  
Multiple Colors in Stock  
**\$1.10 per foot**  
Insulation 1/2" to 4"  
**\$5 to \$18**  
all sizes available -  
Stock only

717-367-0283

## A.S. Hoover, Inc.

13 Culbertson Run Road, Coatesville, PA 19320-1263  
Telephone: 610-942-2591  
Fax and Voice Mail 800-942-2591



RV Industries, Honey Brook, PA

**SPECIALIZING IN PRE-ENGINEERED STEEL BUILDINGS SINCE 1990**  
Founded in 1990 and incorporated in 1992, A S HOOVER, INC has grown rapidly for good reasons. The corporation has been recognized in two recent issues of a national industry news magazine

### WHY A.S. HOOVER, INC. FOR STEEL BUILDINGS?

- SAFETY!** With emphasis on strength, **NO BUILDING FROM A.S. HOOVER HAS NEVER COLLAPSED!**
- QUALITY AND DESIGN.** In addition to commercial, agricultural, and industrial applications including cranes, buildings from HOOVER have met the strict criteria of the National, State, and Township Governments, the School District, and the Philadelphia Airport
- PRICE!** With the most of buildings coming from the lower cost South, and hauled on backhaul, plus a high volume combined with low handling overhead, HOOVER is a leader in cost per ton of steel on the jobsite
- RELIABILITY!** CECO Building Systems, originally Mitchell Buildings is one of the oldest and largest metal building firms. The record of Pennsylvania German builders speaks for itself

In short, A S Hoover, Inc brings to the customer via the smaller Plain people contractors, the benefits of a larger organization while maintaining the frugality for which they are noted. With concentration on efficiency and workmanship, alcohol, profanity, and blaring radios are not permitted on the job. In addition to the volume with CECO, Dealerships are also held with KIRBY (spans to 40' on 12" purlins) and CORLE (galvanized girt and purlin systems) giving unsurpassed coverage of all applications

**"A GOOD REPUTATION IS SOMETHING TO LIVE UP TO, NOT TO LEAN ON"**  
**BUILDING YOUR BUSINESS IS OUR BUSINESS**

Notice! We Drop Ship Discounted Building Packages and Provide Technical Support For Owner Erectors

<b>ALLEN HOOVER</b>	<b>EZRA MARTIN</b>
Mobile 610-733-5615	717-445-9750
717-471-6582	Mobile 717-468-6520
Fax and Voice Mail 800-942-2591	FAX 717-445-4468

## Metal Roofing & Siding

25 Year Warranty Painted



Wheeling Centurydrain™ Roofing and Siding



Wheeling Channeledrain™ Roofing and Siding

Galvanized & Painted  
1-1/4", 2-1/2" Corrugated. 5-V Crimp  
Seamless Rolls 26-1/2" x 50', 28" x 80'  
Full Line Trim, Nails, Screws, Windows, Doors, etc.

*We Deliver*

**A.B. MARTIN ROOFING, LC**  
105 Slate Road, Ephrata, PA 17522  
(717) 445-6885 1-(800) 373-3703  
Fax (717) 445-7893  
Mon. - Fri. 7 AM - 5:30 PM • Sat. 7 AM - 11:30 AM

## 1998 INVENTORY CLEARANCE

**40-50% OFF**

**CALL NOW!**



**BOTH ARCH & STRAIGHT WALL**



**FACTORY DIRECT**

30x40 (2 LEFT)	45x90 (1 LEFT)
40x60 (2 LEFT)	50x100 (1 LEFT)

**PIONEER STEEL BUILDINGS**  
1-800-293-2097 EXT. 222

## AMERICAN SHELTERS

**THE #1 BUILDING FOR STRENGTH, DESIGN, AND CUSTOMER SATISFACTION**  
**A COMMON SENSE APPROACH**  
Economical & As Easy To Construct As 1-2-3



About 1/3  
the price for  
covered  
storage  
spaces



Special interlocking rafter system is one of the heaviest on the market today Available in 20', 24', 30', 35', 37', 42' or 50' widths any length. Many other available options. The unit can be customized to fit your need up to 72' wide

### BUILDING USES:

- livestock housing
- hay storage
- machine storage
- warehouse
- grain storage

Looking for Dealers in New York, PA, Maryland and Virginia

### DEALERS

Huber's Animal Health Supplies  
810 Tulpehocken Rd.  
Myerstown, PA 17067  
(717) 866-2246

Charlie Humphrey  
Lewis County, NY  
(315) 397-2274

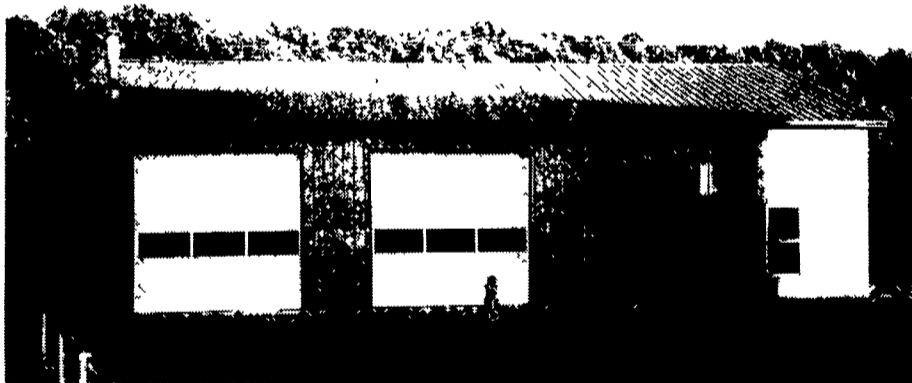
*(Covering Lebanon, Lancaster, Berks, Schuylkill and Dauphin Counties)*

For Dealer Inquiries or Building Quotes Call:

Please Contact Your Local Dealer!  
**AMERICAN SHELTERS**  
716-761-6837  
1-800-491-7221

**PPB**

**Pioneer Pole Buildings, Inc.**  
Pottsville, PA  
Toll Free 1-888-448-2505



## WINTER SPECIALS

24X24X8	\$4,995.00
30X40X10	\$7,700.00
30X64X10	\$10,495.00
40X80X12	\$17,995.00
40X96X14	\$21,995.00

- ★ All buildings have a 3'X6'8" service door
- ★ All have 1 sliding door or 1 overhead door (your choice)
- ★ 25 Year warranty steel roofing and siding
- ★ Free blueprints
- ★ Guaranteed construction in 3 weeks
- ★ Call for free literature

Member Pa Builders Association  
Member National Frame Builders Association