



FEBRUARY 22-28, 1999

PURE MONDAY, FEB. 22.

BIRTHDAY OF THE TOOTHBRUSH

February 24 marks the birthday of the nylon-bristled toothbrush, as marketed by DuPont, on this day in 1938. And what did we do before then, you wonder? Well, there were sage branches and boar's bristles and other fine inventions of necessity. The invention of the first toothbrush is credited to an Englishman, William Addis, who was incarcerated for creating a riot around 1770. With nothing but time on his hands, he bored holes into a meat bone and glued tufts of natural bristles into them. Before that, tooth care was accomplished with a wet rag. (George Washington added chalk to his rag, as recommended by his dentist.)

Be true to your teeth or your teeth will be false to you.



The OLD FARMER'S WEATHER PROVERBS



If cold at St. Peter's Day (Feb. 22), it will last longer.

If February give much snow, a fine summer it doth foreshow.

Thunder in February or March, poor sugar (maple) year.

Fog in February means frosts in May.

TIP OF THE WEEK

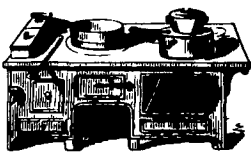
While mouthwashes may reduce tooth plaque, they do not prevent colds or cure bad breath.

SQUASH CASSEROLE

- 1 cup sugar
- 1 cup flour
- 1/4 teaspoon nutmeg
- 1/4 teaspoon cinnamon
- 1/2 teaspoon salt
- 20 ounces frozen or cooked winter squash
- 3-1/4 cups milk
- 1/2 cup (1 stick) butter, melted
- 6 eggs, beaten

ter, and eggs. Mix well, then pour into a well-greased 13x9-inch glass baking dish. Refrigerate for at least 2 hours before baking, then bake at 325° F for 1 hour.

Makes 6 to 8 servings.



Combine dry ingredients in a bowl, then stir in squash. Add milk, but-

www.almanac.com

United Feature Syndicate

(Printed in the U.S.A.)

200 Madison Ave.
N.Y., N.Y. 10016
(212-293-8500)



Needed for population Spring of 99

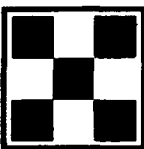
**Hog Finishing Barns
1000-4000 Head Capacity
No experience necessary**

We Provide:

- Single source of pigs
- High Health pigs
- Fixed contract payment
- Assistance in obtaining financing
- Successful record in industry
- Long term contracts

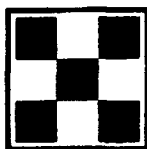
Finishing Barn Ownership Benefits:

- Steady, positive cash flow
- Building equity in facilities
- Excellent Part-time income



Contact

**Purina Mills, Inc.
1-800-873-5300**



New Holland Sales Stables

Report Supplied By USDA
Monday, Feb. 15

	Calves	Sheep	Goats
Today	235	713	850
Last Week	248	493	877
Last Year	216	795	1189

CALVES: COMPARED TO THURS.'S AUCTION, VEALERS SOLD STEADY AND SLAUGHTER CALVES WERE 10.00 HIGHER. TRADE WAS ACTIVE ON HOLSTEIN BULLS RETURNING TO FED AND PRICES WERE MOSTLY STEADY WHILE HEIFERS SOLD WEAK IN A LIGHT TEST.

VEALERS: GOOD AND CHOICE 70-110 LBS. 24.00-29.00. STANDARD AND LOW GOOD 60-90 LBS. 11.00-23.00.

SLAUGHTER CALVES: GOOD AND CHOICE 200-350 LBS. 75.00-95.00; 350-500 LBS. 60.00-75.00. STANDARD 300-600 LBS. 50.00-60.00.

RETURNED TO FARM: HOLSTEIN BULLS 95-125 LBS. 90.00-132.00. PLAINER BULLS 80-115 LBS.

45.00-90.00. HOLSTEIN HEIFERS 80-115 LBS. 152.00-207.00. PLAINER HEIFERS 70-90 LBS. 97.00-165.00.

SHEEP: COMPARED TO THURS., A GOOD OFFERING OF SLAUGHTER LAMBS SOLD STEADY TO FIRM, INSTANCES 10.00 HIGHER ON WEIGHTS OVER 100 LBS. SLAUGHTER EWES WERE MOSTLY STEADY TO 3.00 LOWER.

SLAUGHTER LAMBS: NEW CROP CHOICE AND PRIME 2-3 FEW 40-50 LBS. 150.00-170.00; 50-80 LBS. 110.00-130.00; 80-100 LBS. 95.00-110.00. WOOLED CHOICE AND PRIME 2-3 60-80 LBS. 100.00-110.00; 80-100 LBS. 85.00-95.00; 100-140 LBS. 70.00-85.00.

SLAUGHTER EWES: GOOD AND CHOICE YEARLINGS AND 2 YEAR-OLDS 40.00-60.00. UTILITY AND GOOD 1-3 30.00-42.00.

GOATS: BY THE HEAD, LARGE BILLS 100.00-130.00, FEW UP TO 160.00. MEDIUM 75.00-100.00; CHOICE AND PRIME MUTTON 70.00-100.00; LARGE NANNIES 60.00-80.00, MEDIUM 40.00-60.00; CHOICE AND PRIME YEARLINGS 60.00-90.00; CHOICE AND PRIME KIDS 40.00-65.00, GOOD 20.00-40.00.

New Holland Dairy

New Holland Sales Stables
Wednesday, February 17, 1999
Report Supplied By Auction
69 DAIRY COWS, 107 HEIFERS, 13 BULLS. MARKET STEADY.
LOCAL FRESH COWS 610.00-1350.00, 1 AT 1675.00.
FRESH HEIFERS 400.00-1475.00.
LOCAL SPRINGERS 510.00-1150.00.
UPSTATE LOADS FRESH 900.00-1550.00, 2 AT 1650.00 AND 1675.00.
BETTER FRESH COWS 1550.00-1675.00.
SPRINGING HEIFERS LARGE 1060.00-1400.00, SMALL 475.00-960.00.
SHORT BRED HEIFERS 610.00-1075.00.
OPEN BREEDING AGE HEIFERS 775.00-935.00.
REGISTERED HEIFERS 1200.00-1375.00.
SMALL OPEN HEIFERS 500.00-675.00.
BULLS 195.00-650.00, PUREBREDS 475.00-975.00.

THE ROAD TO A BRIGHTER FUTURE BEGINS HERE.



When you need help with financing of a farm, we're the folks to see. We offer the kind of knowledge and experience to help you improve your farm business today ... for tomorrow.

Call
Dennis Keefer
at 966-2555

WEST MILTON STATE BANK

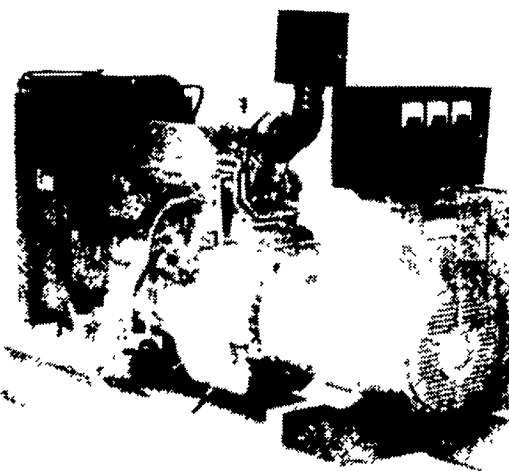
We Care More!



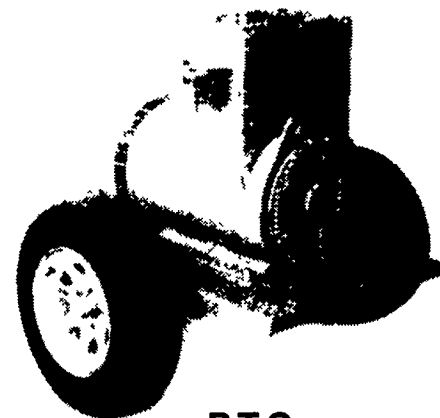
MEMBER FDIC

MIFFLINBURG - Rt. 45 • P.O. Box 150, Mifflinburg, PA 17844 • (570) 966-2555

Agricultural Generators



Automatic
L.P. Gas, Diesel, Natural
Gas Generators
5 to 2,000 KW



P.T.O.
Generators
25 to 100 KW

Service - Rental - New - Used

PENN POWER SYSTEMS

Power Generation Systems Specialists

Call Leonard Martin **717-273-4544**
Fax 717-273-5186