

MERCER LIVESTOCK AUCTION
TUESDAY, FEBRUARY 16, 1999

SLAUGHTER BULLS Yield Grade 1 few 1330-2095 lbs 42 25-52 25 Yield Grade 2 few 1015-1930 lbs 35 75-41 25 Bullocks Select 1-3 few 1125-1150 lbs 45 25-48 50
FEEDER HEIFERS Large 1 500-700 lbs 54 00-67 00 Medium 1-2 325-525 lbs 50 00-64 00, individual 76 00, few 600-725 lbs 51 50-58 50
VEALERS Good few 260-275 lbs 71 00-82 00 Standard and Good 70-90 lbs 20 00-30 00 Utility 55 75 lbs 10 00-18 00
RETURNED TO FARM Holstein bulls Number 1 120-130 lbs 80 00-115 00, 90-115 lbs 97 50-120 00 Number 2 85-135 lbs 35 00 92 50 Holstein heifers Number 1 few 85-120 lbs 210 00-240 00 Number 2 few 80-125 lbs 100 00-150 00 Individual beef type bull and heifers 110 lbs 95 00
BARROWS AND GILTS Compared to last week prices 1 00-2 00 lower 49-54 pct lean 240-300 lbs 29 50-33 50, one lot 34 50 45 50 pct lean 215-290 lbs 27 00-28 50
BOARS Individual 835 lbs 7 75
FEEDER PIGS US 1-3 30-45 lbs 9 00-13 00/per head
SHEEP No market test
GOATS No market test

CATTLE CALVES HOGS
SHEEP GOATS
 TUESDAY 309 115 106
 0
 1 LAST TUESDAY 377 115 64
 0
 1

CATTLE Compared to last Tuesday's auction, slaughter steers sold 50-100 higher Slaughter cows were steady to 200 higher Other classes were not well tested

SLAUGHTER STEERS High Choice and Prime 2-4 few 1200-1450 lbs 62 00 63 75 Choice 2-3 1175-1500 lbs 60 00 63 50, 1500-1675 lbs 56 00-59 00 Select 1-3 54 75-59 75 Standard 1-2 51 00-55 00

HOLSTEIN STEERS High Choice and Prime 2-3 few 1200-1560 lbs 56 00-57 00 Few Choice 2-3 1250-1690 lbs 53 00 55 50 Select 1-2 few 51 50-53 00

SLAUGHTER HEIFERS Choice 2-4 1000 1350 lbs 58 25-60 50 Select 1-3 55 00-57 75 Standard 1-2 few 46 50-52 75

SLAUGHTER COWS Breakers 75-80 pct lean 36 50-42 00, couple up to 45 00 Boners 80-85 pct lean 32 25-38 25 Lean 85-90 pct lean 30 00-35 00 Shells down to 25 00

Carlisle Livestock

Carlisle, Pa.
February 16

Report Supplied By Auction
SLAUGHTER CATTLE: STEERS, NO HIGH CHOICE OR PRIME OFFERED. CHOICE 61.75-63.50; SELECT AND LOW CHOICE 900-1700 LBS. 50.00-61.50.

HOLSTEINS: CHOICE 52.75-56.00; SELECT AND LOW CHOICE 48.00-52.50.

HEIFERS: CHOICE 60.00-63.25; SELECT AND LOW CHOICE 57.75-59.75.

COWS: BREAKERS, NO HIGH YIELD OFFERED. BULK 36.00-38.50; BONERS 35.00-38.50; LEAN 30.00-37.75; LOW DRESSING DOWN TO 28.00; SHELLY TO 27.00.

FEEDER CATTLE: STEERS MED. AND LARGE #1 400-600 LBS. 64.00-73.00; HEIFERS MED AND LARGE #1 400-600 LBS. 64.00-65.00, MEDIUM AND LARGE #1 650-750 LBS. 57.00-65.00; BULLS MEDIUM AND LARGE #1 400-700 LBS. 61.00-76.00; HOLSTEINS/DAIRY TYPES 55.00-57.00; CALVES RETURNING TO FARM, HOLSTEIN BULLS #1 95-125 LBS. 102.50-120.00, 90-135 LBS. 80.00-115.00; HOLSTEIN HEIFERS #1 190.00; BEEF X BULLS TO 102.00.

SWINE: HOGS US#1-3 215-280 LBS. 26.00-28.00, 285-310 LBS. 29.00-33.00, 200-210 LBS. 24.75-25.75.

BOARS: OVER 300 LBS. ONE AT 4.00.

SOWS: US#1-3 370-500 LBS. 16.00-25.75.

GOATS: BY THE HEAD, LARGE NANNIES AND BILLIES 65.00-151.00; FANCY KIDS 50.00-64.00; FLESHY

KIDS 38.00-49.00; SMALL/THIN KIDS 15.00-32.00.

LAMBS: CHOICE 65-110 LBS. 100.00-130.00.

SHEEP: ALL WEIGHTS 30.00-38.00. SALE EVERY TUES., 5 P.M. FOR RABBITS, POULTRY AND EGGS, 8:30 P.M. FOR LIVESTOCK, STARTING WITH CALVES; SPECIAL FED CATTLE SALE TUES., MARCH 2 AND 16. SPECIAL FEEDER CATTLE SALES TUES., MARCH 2 AND 16. ALREADY CONSIGNED FOR MARCH 2: 10 BEEF X STEERS 500-700 LBS. STATE GRADED FEEDER PIG SALES FRI., FEB. 26; PEN LOTS OF CATTLE SOLD IN ORDER RECEIVED; EARLYBIRD PENS CLOSE TUES., 2 P.M.

Pennsylvania Livestock Auction

Waynesburg, Pa.

Thurs., Feb. 18, 1999

Report Supplied by Auction

CATTLE: SL COWS: UTILITY & COMMERCIAL 32.50-40.00; CUTTER & BONING UTILITY 31.00-37.00; CANNER & LOW CUTTER 28.00-33.50; SHELLS 26.50 & DOWN. BULLS: YIELD GRADE 1 1500#-2000# 36.50-54.00; YIELD GRADE 2 1000#-1400# FAT 34.00-45.00.

FEEDER STEERS: M&L-1 300-500# 55.00-90.00; 250-280# 50.00-90.00, M 600-900 LBS. 40.00-64.00. HEIFERS M 1&L-1 300-500# 38.00-80.00; L-1 400-650# 42.00-66.00. BULLS M&L-1 300-620# 42.00-74.50.

CALVES: VEAL. PRIME 68.00-80.00; CHOICE 38.00-70.00; GOOD 35.00-60.00.

FARM CALVES: #1 HOLSTEIN BULLS 90-120# FEW 35.00-75.00; #2

HOLSTEIN BULLS 80-100# FEW 20.00-40.00; BEEF X BULL&HFRS/HD. 20.00-65.00.

HOGS: BARROWS & GILTS #1-2 210-255# 30.00-48.00; #2-3 255-280# 30.00-44.00; SOWS #1-3 300-500# 20.00-32.00.

FEEDER PIGS: 1-3 15-20# 5.00-17.00/HD.; 1-3 25-35# 10.00-21.00/HD.

LAMBS: HIGH CHOICE 80-100 LBS. 50.00-93.00; CHOICE 40-75 LBS. 70.00-115.00; FEEDER LAMBS GOOD 60.00-85.00; SHEEP 24.00-40.00; FAT SHEEP 20.00 & DOWN.

GOATS: LARGE 35.00-115.00/HD.; MEDIUM 20.00-41.00/HD.; SMALL 10.00-19.00/HD.

HORSES: 35.00-65.00, PONIES 20.00-50.00.

North Atlantic Shell Eggs

February 11

Atlanta, Ga.

ALL PRICES REMAIN UNCHANGED. THE MARKET TONE WAS STEADY. DEMAND WAS FAIR TO MODERATE AND WAS BEST WHERE FEATURED. SUPPLIES WERE ADEQUATE. BREAKING STOCK SUPPLIES WERE ADEQUATE FOR THE LIGHT DEMAND. OFFERS OF LIGHT TYPE FOWL WERE ADEQUATE.

PHILADELPHIA: PRICES TO RETAILERS, SALES TO VOLUME BUYERS, USDA GRADE A AND GRADE A, WHITE EGGS IN CARTONS, DELIVERED STORE DOOR, CENTS PER DOZEN:

RANGE: EXTRA LARGE .68-.70%, LARGE .66-.68%, MEDIUM .57-.58.

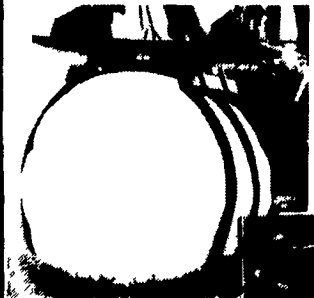


WRAPPED BALE GRABBER

The Logical and Economical Answer to your Handling and Stacking of Wrapped Round Bales.



WIFO Bale Grabs are perfect for positive control of both wrapped and unwrapped bales. The extra wide (6") spread width will pick up bales from any direction. Double drive system provides extra stability.



WIFO'S

Outstanding Quality Workmanship



WHOLESALE DISTRIBUTORS

CUMMINGS and BRICKER, Inc.

100 Stover Drive
Carlisle, PA 17013
717/249-8720

100-120 Lehigh Ave.
P.O. Box 928
Batavia, New York 14021-0928
716/343-5411

"SERVING FARMERS THROUGH FARM EQUIPMENT DEALERS SINCE 1961"



Apply dairy bedding with 75% less time and labor



"It used to take two of us two days to install fresh bedding. Now, with the Millcreek Bedding Spreader, it only takes one man one day."

Scott Coblenz,
Deer Spring Farm, Middletown, MD

Introducing The Remarkable Millcreek Bedding Spreader

Now you can save about 75% of the time and labor for applying wood shavings, sawdust, or sand for free stall bedding. One operator can put in new bedding by himself with no hand-spreading necessary. The Millcreek Bedding Spreader is adjustable, and puts material exactly where you want it in the thickness you want. There's nothing like it for fast, efficient, and cost-effective application of bedding material in free stall dairy barns.



One man can put bedding material exactly where you want it without hand work

Millcreek Bedding Spreaders come in 7 different sizes from 3.8 to 22 cu. yd. capacity, and start under \$5000. Call today for your free information.



Bird-in-Hand, PA 17505

1-800-879-6507