

# Animal Center Announces Performance Bull Sale At Beef Expo

STATE COLLEGE (Centre Co.) — The PA Department of Agriculture's Meat Animal Evaluation Center announces its 26th Annual Performance Tested Bull Sale.

The sale is scheduled to begin at 11.00 a.m. Friday March 26, 1999 in the Ag Arena on Penn State's University Park campus. Approximately 60 bulls from the group of 76 bulls currently on test will be offered for sale.

The test group consists of 38 Angus (including three Red Angus), 17 Polled Herefords, 17 Simmentals, 2 Limousin, 1 Charolais, and 1 Chiangus.

The 112-day performance test will end on March 2. Average daily gain, lifetime weight per day of age and adjusted yearling weight will be calculated for each bull. Bulls will be ultrasonically scanned to determine fat

thickness and estimated loin-eye area. All bulls must pass a comprehensive breeding soundness exam to qualify for sale. All available E.P.D.s will be provided for the bulls in the sale. The Bull Sale will be one of the highlights of the 10th PA Beef Expo, which will run from March 25 through March 28, 1999. A trade show will be held Friday and Saturday, March, 26 and March 27. Pennsylvania's State Simmental female sale will follow the Bull Sale. Friday evening, P.C.A.'s annual banquet and membership meeting will be held. Saturday will feature junior animal check-in, the Junior Skill-A-Thon, Junior Quiz Bowl, the PA Angus female sale and the Junior Heifer Show. Sunday morning will begin with the Junior Showmanship com-

petition, followed by the Junior Steer Show.

Food will be available throughout the event and the public is encouraged to attend this showcase of the PA Beef Industry.

For more information about the Performance Tested Bull Sale and/or the PA Beef Expo contact Glenn Eberly, Director of Meat Animal Evaluation Center, 651 Fox Hollow Rd., State College, PA 16803. Phone 814-238-2527 or 814-865-5857.



## SCHEDULE

<b>Thursday, March 25:</b>	
12-9 pm	Trade Show set-up
<b>Friday, March 26:</b>	
9-5 30	Trade Show
11 am	MAEC PERFORMANCE-TESTED BULL SALE
2 pm	SIMMENTAL SALE (within an hour after Bull Sale)
4 pm	Other Breed Sale (tentative)
7 pm	Cattlemen's Banquet and Membership Meeting
<b>Saturday, March 27:</b>	
8-2 pm	Junior Check-in
8-10 am	Junior Skill-a-thon
9-5 pm	Trade Show
9-10 30 am	Junior Quiz Bowl Preliminaries
11 am	ANGUS SALE
2-4 pm	Junior Steer weigh-in
2 pm	Junior Quiz Bowl Finale
4 pm	Junior Heifer Show
	Junior Pizza Party follows Heifer Show
<b>Sunday, March 28:</b>	
8 am	Junior Showmanship
	Junior Steer Show follows Showmanship



(Continued from Page A2)

85.00-105.00; 100-120 lbs 65.00-75.00. SLAUGHTER EWES: Few Good and Choice yearlings and 2 year-olds 50.00-65.00. Utility and Good 1-3 30.00-45.00.

### Lancaster County Weekly Lancaster, PA Friday, Feb. 12, 1999

	Cattle	Calves
This Week	2177	1913
Last Week	2398	1734
Last Year	2670	1665

CATTLE: COMPARED TO LAST WEEK'S CLOSING PRICES, SLAUGHTER STEERS AND HEIFERS CLOSED .50 HIGHER ON EARLY-WEEK GAINS. THE FAT CATTLE SUPPLY WAS FAIRLY LIGHT THIS WEEK AND AUCTION CONDITIONS WERE MOSTLY AVERAGE, EXCEPT FOR HOLSTEIN STEERS WHERE DEMAND CONTINUES TO IMPROVE AND PRICES ENDED THE WEEK MOSTLY 1.00 HIGHER. THE WESTERN DIRECT MARKETS HAD YET TO MOVE THE BULK OF THEIR SHOWLISTS BY FRIDAY MORNING. PACKER BIDS RANGED 61.00-62.00 WITH FEEDLOT ASKING PRICES OF 64.00-65.00. SLAUGHTER COWS SOLD WEAK TO 1.00 LOWER, BUT PRICES REMAIN STRONG COMPARED TO THE BONELESS BEEF MARKET. SLAUGHTER BULLS SOLD MOSTLY STEADY, INSTANCES .50 HIGHER. SUPPLY AS MADE UP OF AROUND 34 PERCENT SLAUGHTER STEERS, 10 PERCENT SLAUGHTER HEIFERS, 44 PERCENT SLAUGHTER COWS, 5 PERCENT BULLS, WITH THE BALANCE MADE UP OF FEEDER CATTLE.

SLAUGHTER STEERS: HIGH CHOICE AND PRIME 2-4 1200-1490 LBS. 62.85-67.00. CHOICE 2-3 1090-1490 LBS. 61.00-63.50, FEW HIGH DRESSING 1-2 UP TO 64.75; 1490-1610 LBS. 57.75-60.25. SELECT AND LOW CHOICE 2-3 1000-1500 LBS.

57.00-61.75; 1500-1750 LBS. 53.00-58.50. SELECT 1-3 1060-1480 LBS. 54.50-59.00, FEW RETURNING TO FEED 980-1150 LBS. 61.35-64.00.

HOLSTEIN STEERS: HIGH CHOICE AND PRIME 2-3 1285-1540 LBS. 56.60-57.50. CHOICE 2-3 1310-1600 LBS. 53.00-56.85; FEW 1680-1730 LBS. 51.35-51.85. SELECT AND LOW CHOICE 2-3 1215-1565 LBS. 52.00-54.50; 1620-1680 LBS. 46.75-50.85. SELECT 1-2 1080-1415 LBS. 47.00-52.50.

SLAUGHTER HEIFERS: FEW HIGH CHOICE AND PRIME 2-4 1200-1250 LBS. 62.85-64.00. CHOICE 2-4 1040-1275 LBS. 60.25-63.25, LOW DRESSING 4-5 985-1275 LBS 56.00-60.50. SELECT AND LOW CHOICE 2-3 1040-1305 LBS. 56.75-59.75. FEW SELECT 1-3 1020-1170 LBS. 53.25-55.50. HEIFERETTES: COMMERCIAL AND STANDARD 2-4 830-1460 LBS. 40.00-53.00.

SLAUGHTER COWS: BREAKERS 75-80 PCT. LEAN, OVER 1400 LBS. BULK 38.00-43.75, LOW DRESSING 35.50-39.00; BONERS 80-85 PCT. LEAN, OVER 1200 LBS., BUK 35.75-39.25, LOW DRESSING 33.50-36.50. LEAN (HI-YIELD) 85-88 PCT. LEAN, OVER 1200 LBS. BULK 34.50-38.25, LOW DRESSING 33.25-36.00; LEAN 88-90 PCT. LEAN, OVER 1000 LBS. 33.00-36.50 BULK, LOW DRESSING 33.25-36.00; LEAN 88-90 PCT LEAN (LIGHT WT) 85-90 PCT. LEAN, 750-1000 LBS., BULK 30.00-35.25, LOW DRESSING 26.75-31.50.

SLAUGHTER BULLS: YIELD GRADE 1 935-2200 LBS. 45.75-56.50, FEW UP TO 60.25; OUTSTANDING CHAROLAIS 1650 LBS. 64.50. YIELD GRADE 2 990-2285 LBS. 37.00-46.00. BULLOCKS: SELECT 1-3 920-1485 LBS. 46.50-55.50, FEW UP TO 58.50.

SLAUGHTER CALVES: GOOD AND CHOICE 200-350 LBS. 65.00-98.00, LATE MOSTLY 65.00-85.00; 350-500 LBS. 48.00-68.00. STANDARD 300-600 LBS. 40.00-58.00.

## MARTIN'S TIRE & ALIGNMENT

### We're Your Firestone Farm Tire Dealer!

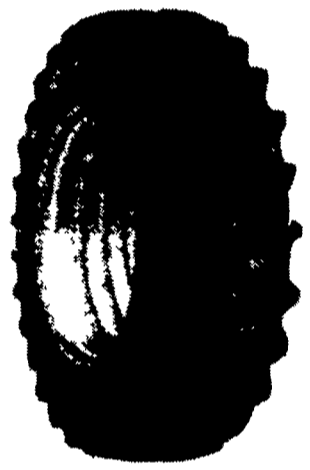
#### Count on us year-round for:

- A complete line of Firestone farm tires
- In the field emergency repair service
- Implement and light truck tires in stock too!

Call For Prices

### Firestone All Traction 23°

18.4R34	1 ★	\$550.00
20.8R38	1 ★	\$730.00
20.8R38	2 ★	\$885.00
20.8R42	2 ★	\$890.00



Visit or call us today!  
**MARTIN'S TIRE & ALIGNMENT**  
Located in Churchtown  
119 Water St., Narvon, PA 17555  
**717-445-4993**



After lying on our mattresses  
your cows will never be the same...



### They found the sound choice.

The EXCLUSIVE North Brook Farms Cow Mattress System, by the creators of the original mattress system.

#### COMPARE:

- ✓ Our Premium Quality **WATERPROOF** System... the only one of its kind!
- ✓ Our 80 oz. Non-Woven Fabric... The toughest, non-abrasive, moisture-resistant cover ever!
- ✓ Our 10-Cell Patented Woven Seam Construction Mattress... 130# of rubber, 30% more cow comfort.
- ✓ Our 3 Year Warranty.

**NORTH BROOK FARMS**  
WEEDSPORT, NEW YORK  
Call Toll Free: 877-624-2638



You saw us  
at the  
**Keystone Show**  
and now  
the cows are  
clamoring  
for our  
**SHOW SPECIAL!**

#### INCLUDES:

1. of 80 oz  
Top Cover  
Mattress

**FREE**  
Straps & Screws

OR ONLY  
**\$42.95**

SAVE \$11.35  
PER STALL!

Special Offer  
through 2/15/99.

## Ideal Leaf Tobacco Company

Will process your  
tobacco or will  
buy your tobacco

Call

**717-529-6416**