

FOR SALE: Lots of used claws, shells, pulsators, takeoffs, meters, weigh-jars, bucket milkers, DV-300's, receiver groups, CIP's, etc. Many brands and models. "Free" UPS shipping or delivery. BUY-SELL-TRADE. 15 day Satisfaction Guarantee. E-ZEE MILKING EQUIPMENT, INC. Office hours: 7am-5pm. Business NOT OPEN to public EXCEPT by appointment. Gordonville, PA 17529 717-768-7599.

### Martin's Farm Supply

is a Manufacturer of Gates, Freestalls, Headlocks, Slant Bar and Fence Panels Made of Sched. 40 Pipe. Compare our Hot-Dipped Galv. Products - Quality. It is superior to any paint.

We specialize in Custom Manufacturing to your needs.

No job too small or too Large.

Call (717) 369-5702 For Info.

WESTFALIA

Please call us for your used dairy equipment needs.

We Ship Parts Daily UPS 24 HOUR SERVICE

ON THE FARM ROUTE SERVICE

## Fisher & Thompson Inc.

DAIRY & MILKING EQUIPMENT SALES & SERVICE

Four Locations

<b>MAIN OFFICE</b> 15 NEWPORT RD LEOLA, PA 17540 717-656-3307	<b>CHAMBERBURG SERVICE CENTER</b> 5455 BIKLE RD CHAMBERSBURG, PA 17201 717-352-7606	<b>MIFFLINBURG SALES CENTER</b> RD 2 BOX 265 WABASH RD MIFFLINBURG, PA 17844 717-966-3900	<b>NORTHERN SERVICE CENTER</b> 3450 S MAIN ST BELLEVILLE, PA 17004 717-935-7422
--	--	---	--

Open Saturday 8 a.m. - Noon

WESTFALIA

### THE LEGEND LIVES



- Durable And Reliable - Engine Life Routinely Exceeds 20,000 Hrs.
- Lower Fuel Consumption
- Exceeds All Pending Exhaust Emission Requirements
- Genuine Bosch Injection Equip.

Air Cooled And Water Cooled Engines In All Horse Power Ranges For A True Heavy Duty Diesel Without The Heavy Duty Price Tag, Call Today Used Deutz power units available

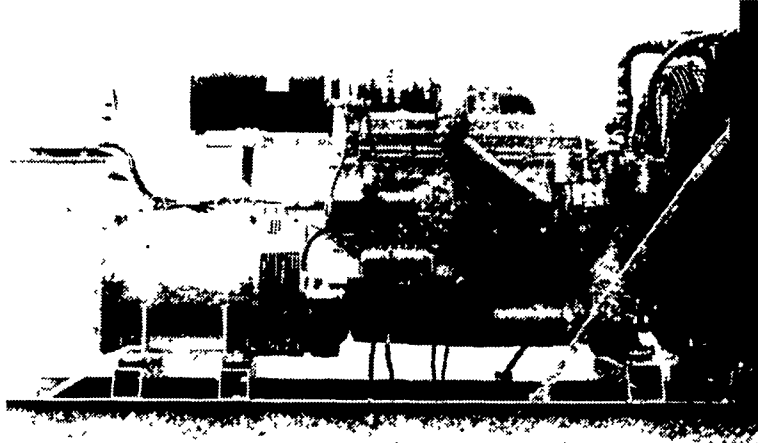
RUFUS BRUBAKER REFRIGERATION & POWER

76 Pumping Station Rd. Quarryville, Pa 17566

717-786-1617

24 Hr. Emergency Service Available

## GENERATORS



MARTIN ELECTRIC PLANTS • Manufacturer of: DIESEL, LP GAS, NATURAL GAS, PTO Automatic & Manual Start Systems

USED UNITS ALSO AVAILABLE

Call Us For All Your Generator Needs!

### MARTIN ELECTRIC PLANTS

280 Pleasant Valley Rd., Ephrata, PA 17522-8620

800-713-7968

Tel: 717-733-7968 Fax: 717-733-1981

## MUSSER REFRIGERATION

Bulk Milk Tanks

Sales & Service

Belt Driven Cooling Compressors Walk-Ins • Ice Boxes • 12 Volt Systems

Gordonville, Pa. • 717-355-0572

### ATTENTION DAIRY FARMERS

We Need Good Used Tanks 600 - 6,000 Gal. - Call Us

- |                                       |   |  |
|---------------------------------------|---|--|
| • 150 Gal Zero Self-Contained (nice)  | • 600 Gal Storage                       | • 1250 Gal Van Vetter                  |
| • 155 Gal <b>SOLD NY</b>              | • 600 Gal Majonier                      | • 1250 Gal DeLaval                     |
| • 180 Gal Milkkeeper (Self Contained) | • 625 Gal Sunset                        | • 1500 Gal DanKool                     |
| • 200 Gal Self Contained (nice)       | • 625 Gal Girton D5                     | • 1500 Gal Surge                       |
| • 200 Gal Milkkeeper                  | • 700 Gal Mueller "M"                   | • 1500 Gal Storage                     |
| • 250 Gal Sunset                      | • 700 Gal Mueller O                     | • 1500 Gal Mueller M                   |
| • 250 Gal Milkkeeper Self Contained   | • 735 Gal Sunset                        | • 1500 Gal Mueller OH                  |
| • 300 Gal Girton                      | • 800 Gal <b>SOLD PA</b>                | • 1500 Gal Mueller O                   |
| • 400 Gal Girton D4                   | • 800 Gal Girton D-4                    | • 1500 Gal Mueller OE                  |
| • 400 Gal Milkkeeper (Self Contained) | • 800 Gal DanKool                       | • 1500 Gal Girton D2                   |
| • 400 Gal Jamesway                    | • 800 Gal Girton D5                     | • 1500 Gal Girton D5                   |
| • 400 Gal Mueller                     | • 800 Gal Mueller OH                    | • 1600 Gal Mueller OE                  |
| • 415 Gal Sunset                      | • 800 Gal Mueller O                     | • 2000 Gal Mueller O                   |
| • 500 Gal DanKool                     | • 800 Gal Surge                         | • 2000 Gal Mueller OH (2)              |
| • 500 Gal Mueller O                   | • 850 Gal Sunset, Flat Top              | • 2000 Gal <b>SOLD NY</b> (Late Model) |
| • 500 Gal Sunset                      | • 1000 Gal DanKool                      | • 2000 Gal DanKool (late model)        |
| • 500 Gal Majonier                    | • 1000 Gal Mueller M                    | • 2000 Gal Surge                       |
| • 500 Gal Mueller M                   | • 1000 Gal Mueller OH (3)               | • 2000 Gal Mueller M                   |
| • 500 Gal Mueller OH                  | • 1000 Gal Mueller OE (Late Model Nice) | • 2000 Gal Zero                        |
| • 500 Gal <b>SOLD GA</b>              | • 1000 Gal Sunset (Rd)                  | • 2500 Gal Girton D5                   |
| • 500 Gal Girton                      | • 1000 Gal Sunset (Flat)                | • 2500 Gal Storage                     |
| • (3) 600 Gal Girton (D4)             | • 1000 Gal Storage                      | • 2700 Gal Storage                     |
| • 600 Gal Mueller M                   | • 1000 Gal Girton D5                    | • 3000 Gal Surge                       |
| • 600 Gal Mueller OH                  | • 1250 Gal Storage                      | • 3000 Gal Globe                       |
| • 600 Gal Sunset                      | • 1250 Gal Mueller OH                   | • 3000 Gal DanKool                     |
|                                       | • 1250 Gal <b>SOLD PA</b> (DanKool)     | • 3500 Gal <b>SOLD NY</b>              |
|                                       | • 1250 Gal Girton D5                    | • 3500 Gal Storage                     |
|                                       | • 1250 Gal Surge                        | • 4000 Gal Storage                     |

#### HEAT EXCHANGERS

- Therma Stor 80 • Therma Stor 100
- Mueller Fre Heater 105 Gal.
- Therma Stor III, 120 Gal. • Mueller Fre Heater 50 Gal.
- 300-6000 Gal. Storage Tanks

Installation, Sales And Service

## RAY SHENK

505 E Woods Drive Litz, PA 17543  
Sales 717-626-1151 24 Hr. Service

## SUPER SAVINGS BARN CLEANER REPLACEMENT CHAIN



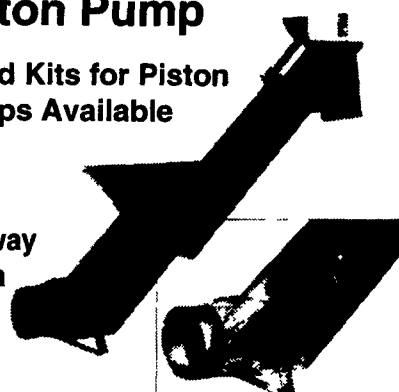
- for
- Jamesway
  - Berg • Patz
  - Farmway
  - Clay
  - Starline

Drive Units, Sprockets & Ramps Also Available

### Rebuild your Piston Pump

Rebuild Kits for Piston Pumps Available

- J-Star
- Badger
- Jamesway
- Nesseth



Sales & Service

ROVENDALE AG & BARN EQUIP.

WATSONTOWN, PA 17777

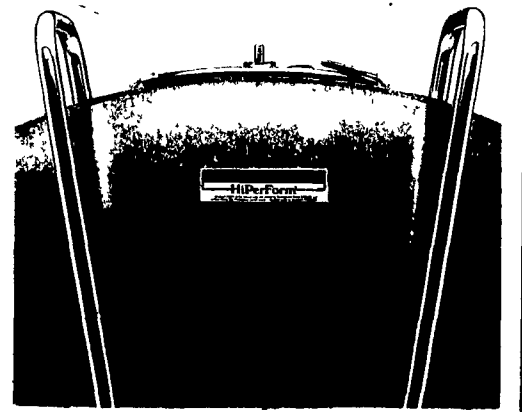
717-538-9564 OR 717-742-4226

Exit 31, I 80 to I 180 Watsonstown Exit

Hours: Mon-Fri 8 to 5 Sat 8 to 12

### HOW BIG A COOLER DO I REALLY NEED?

Depends on a lot of things. But one thing's certain Mueller makes the milk cooler that's right for your operation. And it's built to last. So it'll have high resale value the day you need a bigger cooler. For help deciding how big a milk cooler you need, contact your local Mueller dealer.



### Martin's Refrigeration, Inc.

Phone (717) 352-2783 1122 Woodstock Rd  
Sales & Service Fayetteville, PA 17522

MUELLER

### Pipelines For Stanchion Barns:

(2) 2" Pipeline for 30 stanchion barn, DeLaval, Boumatic

2, 2 1/2 & 3" SS low lines for any size barn, all major brands

All brands of herringbone & parallel stalls  
DELAVAL, BOUMATIC, WESTFALIA & SURGE  
VACUUM PUMPS, ALL SIZES

Vacuum Pump - Sutorbilt Model GAEMDPA, 20 hp, 3-phase, used 1 year

#### DeLaval

Stutterbilt vacuum pump, 78 Vacuum pump  
84 Vacuum Pump, 10 hp Vacuum pump w/15  
2 Station Challenger Feeder w/50 Responders hp motor  
24 Super-flow units 85 lb. weigh jars  
24 Delatron Pulsators 65 lb. weigh jars

#### Boumatic

2100 Computer Stations  
20 Flo-Star milkers Claws pulsators & washer

#### Westfalia

12 Bio Claws 7 Station Computer Feeder

#### Surge

Weigh jars w/bracket (8) RX Milker Units  
(16) VSO take offs Electrobrain washer

#### Universal

3" Low Line w/Washer

#### Miscellaneous

12 Choretime feeders w/Big Dutchman feed system  
Metal free stall dividers

Buy & Sell used milk tanks - any size

Freddie S. Smith

540/639-2262

### 7 LIVESTOCK EQUIPMENT



Custom Mfg. and Welding

### Aaron's Welding

voice mail 717-529-0918

Std. & Custom Size Galv. Farmgates

778A Bartville Rd. Christiana, PA 17509

## C&F Co. CARNEY CATTLE & FENCE CO.

\*Specializing in fence for cattle & horses

- High tensile fence
- Single and double top rail
- Board fence

\*ROHN AGRI Products

Daniel Carney 1-800-498-0777

710 Back Road Gallitzin, PA 16641