

New Holland Sales Stables

Report Supplied By USDA
Monday, Feb. 8

	Calves	Sheep	Goats
Today	248	594	877
Last Week			
	211	699	554
Last Year			
	192	670	721

CALVES: COMPARED TO THURS.'S AUCTION, VEALERS AND SLAUGHTER CALVES SOLD 5.00 HIGHER. DEMAND CONTINUES TO BE GOOD FOR HOLSTEIN BULLS RETURNING TO FEED, BUT PRICES WERE 15.00-25.00 LOWER THAN THURS.'S ACTIVE MARKET. HOLSTEIN HEIFERS WERE NOT FULLY TESTED. VEALERS: GOOD AND CHOICE 70-110 LBS. 27.00-32.00, FEW UP TO

36.00. STANDARD AND LOW GOOD 60-90 LBS. 11.00-20.00. SLAUGHTER CALVES: GOOD AND CHOICE 250-350 LBS. 75.00-95.00; 350-500 LBS. 55.00-65.00. STANDARD 300-600 LBS. 40.00-55.00. RETURNED TO FARM: HOLSTEIN BULLS 95-125 LBS. 80.00-132.00. PLAINER BULLS 80-115 LBS. 50.00-85.00, HOLSTEIN HEIFERS 80-114 LBS. 170.00-207.00. PLAINER HEIFERS 70-90 LBS. 102.00-175.00. SHEEP: COMPARED TO THURS., SLAUGHTER LAMBS SOLD WEAK TO 5.00 LOEWR, INSTANCES 10.00 LOWER ON WEIGHTS UNDER 80 LBS. SLAUGHTER EWES SOLD MOSTLY STEADY. SLAUGHTER LAMBS: NEW CROP CHOICE AND RIME 2-3 50-90 LBS. 10.00-125.00. WOOLED CHOICE AND PRIME 2-3 60-80 LBS. 100.00-115.00; 80-100 LBS. 80.00-100.00; 100-120 LBS.

65.00-75.00; 120-140 LBS. 62.00-68.00. SLAUGHTER EWES: GOOD AND CHOICE YEARLINGS AND 2 YEAR-OLDS 40.00-55.00. UTILITY AND GOOD 1-3 30.00-40.00. GOATS: LARGE BILLIES 100.00-140.00, FEW UP TO 160.00. MEDIUM 75.00-100.00; CHOICE AND PRIME MUTTON 60.00-90.00; LARGE NANNIES 60.00-75.00, MED. 40.00-60.00; CHOICE AND PRIME YEARLINGS 50.00-80.00; CHOICE AND PRIME KIDS 40.00-65.00. GOOD 20.00-40.00.

Aberdeen Sales Company, Inc.

Complete Auction & Appraisal Service
Churchville, Md.
Report Supplied by Auction
Wednesday, Feb. 10
SLAUGHTER STEERS: STEADY.

CHOICE 2-4 1100-1400 LBS. 63.00-65.50; SELECT & LOW CHOICE 1000-1500 LBS. 59.00-63.00; HOL. STEERS HI CHOICE & PRIME 1250-1400 LBS. 56.00-58.50; CHOICE 1200-1500 LBS. 54.00-56.00; SELECT, ALL WEIGHTS 49.00-52.00. SLAUGHTER HEIFERS: STEADY. CHOICE & PRIME 950-1300 LBS. 62.00-64.50; SELECT ALL WEIGHTS 900-1400 LBS. 54.00-59.00. COWS: STEADY. BRK. UT. & COMM. 2-4 BULK 36.00-39.00; HI DRESSING 40.00-43.00; CUTTER & BON. UT. 34.00-37.00; HI DRESSING 37.00-40.00; CANNER & CUTTERS 29.00-34.00; LOW DRESSING 27.00-DOWN. BULLS: 4.00 HIGHER. ALL WEIGHTS 1100-1900 LBS. 43.00-56.00. VEAL CALVES: STEADY. CHOICE AND PRIME 200-400 LBS. 64.00-81.00; HI GOOD AND LOW CHOICE ALL WEIGHTS 49.00-61.00. FARM CALVES: 25.00 HIGHER. HOL. BULLS 100-125 LBS. 95.00-135.00; HOL. BULLS 85-95 LBS. 70.00-115.00; HOL. HEIFER CALVES 100-120 LBS. 160.00-216.00; SMALL FRAME 70-105 LBS. 45.00-143.00; SLAUGHTER CALVES ALL WEIGHTS 22.00-30.00. FEEDER CATTLE: STEADY. BULLS & STEERS 400-900 LBS. 53.00-81.00; HEIFERS 300-700 LBS. 51.00-65.00. LAMBS: STEADY. CHOICE & PRIME 90-110 LBS. 81.00-93.00; LIGHTER LAMBS 94.00-110.00; EWES - HEAVY 29.00-40.00, LIGHT 40.00-53.00. GOATS: STEADY. SMALL 25.00-40.00; MEDIUM 40.00-70.00;

LARGE 75.00-110.00. HOGS: STEADY. 210-250 LBS. 26.00-29.00; 255-300 LBS. 23.00-29.00; SOWS - HEAVY 16.00-21.00; SOWS-LIGHT 13.00-18.00; BOARS ALL WEIGHTS 6.00-11.00.

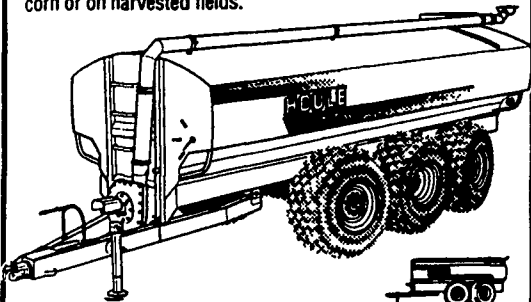
Valley Stockyards

Athens, Pa.
February 8, 1999
Report Supplied By Auction
HOLSTEIN HEIFER CALVES: 105.00-260.00. BACK TO FARM CALVES: 95-120 LBS. 77.50-130.00, 70-95 LBS. 60.00-102.50. SLAUGHTER CALVES: 16.00-27.00. GRASSERS AND STARTED CALVES: 83.00-105.00. FEEDERS: 56.00-73.00. LAMBS: 102.50-122.00. SHEEP: 23.00-38.00. HOGS: 200-250 LBS., 25.00-35.00. SOWS: 12.00-18.00. BOARS: NONE. PIGS: EACH, 12.00-15.00. HEIFERS: 34.00-47.00. STEERS: 35.00-49.50. BULLS: 41.00-43.75. COWS GOOD: 33.75-39.75. COWS MEDIUM: 26.00-34.00. COWS POOR OR SMALL: 10.00-29.00. CATTLE MARKET STRONGER. CALF MARKET STRONGER. HORSES & PONIES, NONE. GOATS 25.00-75.00.

Talk To Us Now For Your Spring Needs

LIQUID MANURE SPREADER

WITH FLOTATION TIRES TO MINIMIZE SOIL COMPACTION Available with complete line of spreading tool bars and precise flow control to spread manure the ecological way eliminating spray drift and reducing odors. Our tool bars are designed to apply hog or dairy manure on growing fields, between rows of corn or on harvested fields.



4-8 OR 6 WHEEL SPREADERS WITH POWER STEERING - 3000 TO 9500 US GAL.

SPREADERS WITH SINGLE AXLE OR TANDEMS - 2350 TO 8000 US GAL.

- "V" shape bottom for more complete clean out.
- Standard exterior finish: epoxy primer and urethane paint.
- Low profile tank for maximum visibility and stability.

HOLE FARM EQUIPMENT MANUFACTURER

SPREADER TANKS from 3600 to 6300 Gal. & Lagoon Pumps Available For Rent Or Sale

NEW/USED/RENTAL LIQUID MANURE EQUIPMENT

THIS WEEK'S SPECIAL
1998 Houle 5350 Gal. Spreader 28Lx26 Tires, Brakes, Lights \$16,900

Spreaders

- Calumet 1500 Gal. Vacuum Tank, 14Lx16.1 Tires.....Call
- Houle 3600 Gal. Spreader, 23.1x26 Tires, Brakes.....Call
- Calumet Model 3750 Vacuum Tank, 23 1x26 Tires, Semi-Trailer Brakes.....Call
- Calumet 3750 Gal. Spreader, 50x21x20 tires 1994.....Coming In
- Houle 4300 Gal. Spreader 28Lx26 Tires, Brakes, Lights.....Call
- Houle 4800 Gal. Spreader, 28Lx26 Tires, Brakes.....\$15,900
- Houle 6300 Gal. Spreader, (6) 28Lx26 Tires, Steering Axle, Brakes.....Call

Pumps

- Houle 42 ft Lagoon Pump, '98 Rental.....Call
- Houle 32 ft Lagoon Pump, '98 Rental.....Call
- Houle 32 Ft Multi Purpose Lagoon Pump, RENTAL.....Call
- Houle 20" & 28" Maxi-Pump.....Call

—Financing Available—

"We're Here To Serve You"

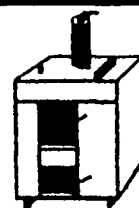
SNOOK'S EQUIPMENT

RD 3, Box 130, Mifflinburg, PA 17844
570-966-2736
Ask For Ernest or Dean

Mahoning Outdoor Furnaces

Cut Your Heating Costs With Our Outdoor Furnace

- Standard Model Burns Wood, Coal or Wood by-products
- Multi-Fuel Model Burns Wood, Coal, Oil or Gas



Adapts to any existing heat system installation & Accessories Available

DOUGLAS FISHER
Gettysburg-New Oxford
(717)624-3639 (717)624-4188

YOU'VE GOT TO RIDE IT TO BELIEVE IT

SPORTSMAN 335

- Sporty Polaris 335 - 4-stroke, air-cooled engine
- Exclusive, independent long-travel (9.5") rear suspension with stabilizing anti-roll bar
- Tight-turning MacPherson strut long-travel (6.25") front suspension



- Independent 4-wheel shaft drive
- True 4-wheel drive with on/off thumb switch
- Automatic transmission (PVT)
- Single-lever, all-wheel hydraulic disc brakes, hydraulic rear foot brake
- High, 10.25" of ground clearance

POLARIS
RIDE THE BEST

J & H Cycle Accessories, Inc.

717-653-5672
1090 W. Main St., Mount Joy, PA 17552

FEBRUARY SPECIALS February 15th Thru Feb. 20th

AUTO-TURN FORE CART
Sprocket-Type Notch Selector, Steel Tongue

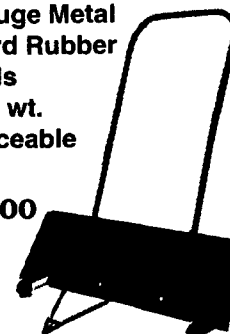


Heavy Duty 6-Stub Wheel Assembly
Without Brakes - Reg. \$465 SALE \$450
With Brakes - Reg. \$685 SALE \$670

BARN YARD SCRAPER

- 48" Wide
- 11 Gauge Metal
- 3" Hard Rubber Wheels
- 45 Lb. wt.
- Replaceable Heel

\$56⁰⁰



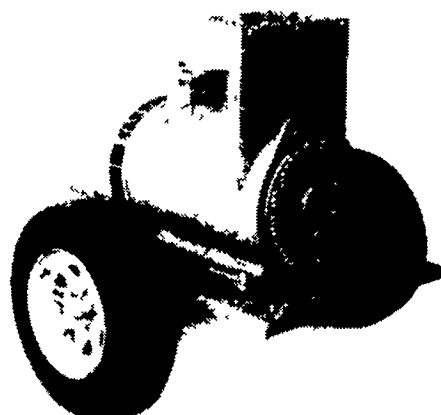
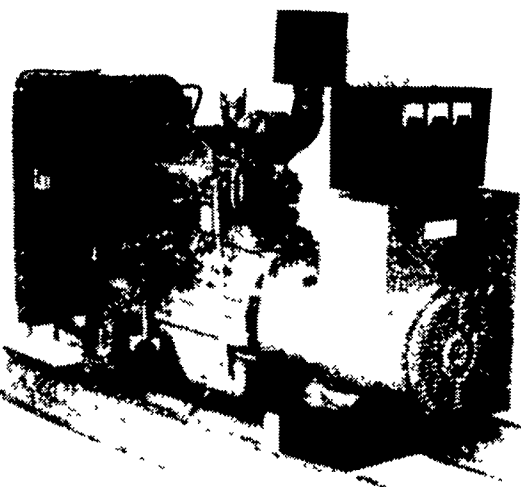
Garden Cultivators.....Reg. \$140⁰⁰ Sale \$130⁰⁰
Rope & Pulley Eveners.....\$42⁰⁰ Set

NICKEL MINE WELDING SHOP

2133 Mine Road, Paradise, PA 17562
Ans. Service 717-786-7363 From 7:30-8:00 AM or Leave Message

ALL PARTS \$1⁰⁰-100⁰⁰ 5% OFF
\$100⁰⁰-Up 10% OFF

Agricultural Generators



Automatic L.P. Gas, Diesel, Natural Gas Generators 5 to 2,000 KW

P.T.O. Generators 25 to 100 KW

Service - Rental - New - Used

PENN POWER SYSTEMS

Power Generation Systems Specialists

Call Leonard Martin 717-273-4544
Fax 717-273-5186