

MISSOURI

FREE Brochure dairy farms and ranches.

Low taxes, long growing season.

417-469-2316

Baker Realty, Box 36
Willow Springs, MO 65793
http://www.bakerealty.com

Missouri Ozarks

Mountain Splendor

Retreats & Ranches

Back Home Real Estate

1-800-938-8800

Farm Finance, Inc.

serving farms and agribusinesses

Fixed Rate Mortgages

available as low as

6.9%

If your Fair Market Value equity is 40% or more,

If the Loan-to-Value is 70% or less,

If your financing needs are between \$200,000 and \$20,000,000

Call Tom McAbee

716-243-5174

NEW HORIZONS

REAL ESTATE CO.

BUSINESS OPPORTUNITY - Bar, restaurant, video rentals & 4 apartment rentals. Property has been owned and operated successfully for many years. Good opportunity for ambitious person who wants to be in business for themselves. \$267,000.

SNYDER COUNTY - 2.7 COUNTRY ACRES- PLUS 2-story house near Mt Pleasant Mills. 4 bedrooms, 1-1/2 baths, 2-car garage plus 16x37 workshop. New furnace & replacement windows. Near State Lands. \$79,900.

CLINTON COUNTY BLDG. SITE- Zoned residential or commercial. Fronts on 2 highways. Public water & sewer. \$30,000.

5.64 ACRES in Whitetail Mt. Forest, Lot 71, Clinton County. \$11,000.

5.43 ACRES in Eagleton Forest, Lot 72, Clinton County. \$10,700.

3.71 ACRES in Eagles Nest Forest, Lot 21, Clinton County. \$14,000.

11.16 ACRES in Eagleton Forest, Lot 86 & 87, Clinton County. \$17,000.

44.5 ACRES - Partially wooded. Near I-80, Centre County. Very good hunting. 4-wheel drive needed. \$55,000.

132 ACRES - All wooded & very private land in Nittany Valley, Centre County. Ideal private homesite or development land. \$158,400.

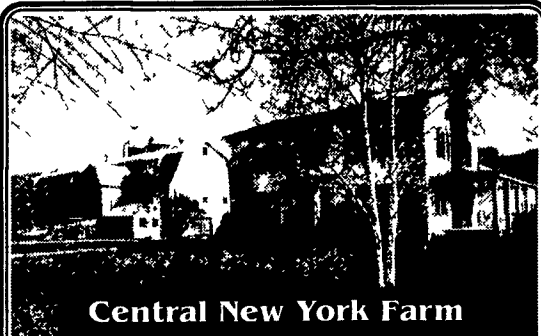
CLEARFIELD AREA - 63 acre plus 10 room split level house. 6 bedrooms, 3 baths & jacuzzi. 40x30 steel bldg. Spring fed fish pond. Old barn & partially fenced pasture. All mineral rights included. Very private. Near State Forest Lands. \$275,000.

213 ACRE DAIRY FARM - Near Westfield in Tioga County. 150 acres tillable. 7 wooded, balance pasture. 450 additional acres available for lease for nominal fee. 2-story farm house, 65 stall barn plus additional box stalls with 8 unit pipe line. 1000 gal tank, 3 unloading silos, 30x126 heifer barn, loafing barn for 25 cows, 40x130 drive through equipment bldg., 36x70 metal implement bldg. Great value for price. \$290,000.

CLINTON COUNTY - Duplex bordering Young Womans Creek in North Bend near Renova. Good fishing & hunting. \$45,000.

COMMERCIAL/INDUSTRIAL - 4.5 acres, cleared & level. Near exit of I-19 in Centre County. Milesburg Area. Possible railroad siding. Good visibility. \$239,000.

Bellefonte (814) 355-8500



Central New York Farm

430 acre 'Dairy of Distinction' farm near Interstate on US Rt 11, 165 ac tillable, rotational pastures. 70 tie stall barn with bedded pack addition; box stalls; concrete barn yard, heifer barn TMR system; Boumatic pipeline. 5 bdr Georgian colonial home w/apt and 3 bdr home, both in excellent condition.

Reply to Lancaster Farming, G-210
PO Box 609, Ephrata, PA 17522

7.2 ACRES Near Willow Street, Open, Lots of Road Frontage and Level

50 ACRES - Mostly tillable fertile land, level to gently sloped. Pequea Twp. Priced reasonably for farming. ML#59882 Call Don

DRUMORE TWP. - 72 acre beef & general farm just south of the "Buck". 58 acres tillable, large farmhouse, pond. Sits back off main road. \$430,000. ML63437 Call Bill for details.

COLERAIN TWP. - 3BR ranch on 3.4 acres, 2 full baths, family room w/fireplace, large eat-in kitchen, oversized 2 car garage with workshop. \$205,000. 64400 Ask for Bill

19 ACRES - open land, Fulton Twp. \$119,000, 63902 Ask for Bill

8.4 ACRES - Special secluded property in Solanco area, wooded & clear, zoned agri & business compatible. 1 contemporary & 1 ranch house, plus rental. Call for details. Ask for Betty



American Heritage
(717) 464-4700
(717) 786-2131



78 Main Street
Wellsboro, PA 16901
(570) 724-5921

Wilkinson-Dunn Co. EMAIL: wilk1dunn@aol.com
INTERNET: www.century21.com

W-1163 Rental property for sale. 3 units currently rented, 2/2 bedroom and 1/1 bedroom. Heat included in rent. Good income flow. Tioga. \$76,500

W-1180 Lovely raised ranch just out of Wellsboro. Partial brick exterior, paved drive to beautiful landscaped yard, 2 car garage, fireplace, 3 bedroom, 2 bath. Come take a look. Won't last. Charleston. \$98,500

W-1190 Character from the past is alive in this 2 story farm house. Has been used as a Bed & Breakfast. Includes "Summer House", flower gardens, gracious front porch, study, 4 bdrms, 2 1/2 baths, woodstove in family room. This lovely home can be yours. Charleston Twp. \$97,500

W-1187 Older 2 bedroom mobile on 11.9 acres of open land. Septic & well. Near PA Grand Canyon. Delmar. \$49,900

W-1211 Neat & Peaceful Camp on 3.9 acres. 40 ft mobile w/frame roof sleeps 4, plus 27 ft travel trailer sleeps 6. Includes most furnishings. Located in superb hunting area. Farmington Twp. \$34,900

W-1212 Commercial Property For Sale. 7460 sq ft, open interior, access to main highway. Septic and well, central air, some coolers included. Plenty of parking. Keeneyville. \$68,900

Salem County

Prime planting and hunting. 58+ acres of wooded and tillable land. Over 2000' frontage. Priced right!

Tillable 21+ acre, corner property. Ready for your crops. Great price!

Wooded and clear 50 acre parcel offering 2 oversized buildings set up for horses, fenced pasture too! Call for more details!

Beautiful rolling 23+ acre wooded parcel, perfect for a dream home. \$50,000.

Cumberland County

30 acre horse or livestock farm. Pond, numerous buildings. Colonial home and guest home too! Secluded, surrounded by Wildlife Management area. Low asking price.

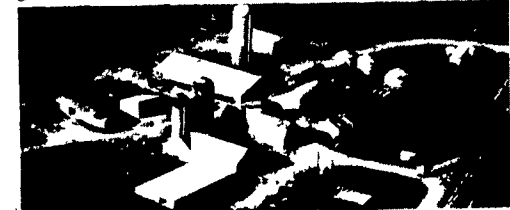
Century 21
Turner/Dean
609/451-9200

112 ACRE FARM FOR SALE

Seneca Falls, NY

Modern 60 Tie Stall Barn,
Eleven Room Remodeled House,
40'x100' Heifer, Barn/Heated Shop,
60'x65' Machine Storage. Dead End Rd.
(315) 568-8910

Price Reduction For Quick Sale \$425,000



MALONE, FRANKLIN COUNTY, NEW YORK VEGETABLE/POTATO OR DAIRY FARM

1060 Acres w/680 tillable acres, 380 wooded, Property can be subdivided, possible financing, VCR tape available

Complete information available regarding yield, climate, soil, buildings and map. Come see the farm at it's best now! Refrig. cooler for rent for immediate or emergency use

Jerry Shulman
Produce Shipper, Inc.
Box 41
Port Jefferson Sta., NY 11776
1-800-645-7776

FARM LISTINGS

NEW LISTING TIOGA COUNTY



140A Dairy Farm, 96A tillable, 42 comfort stalls, gutter cleaner, 36'x80' imple. shed & shop, 45'x72' Morton pole shed, 600 gal. milk tank, 4 unit milker, 1 1/2" stainless steel pipeline. 2 1/2 story frame & vinyl dwelling, 1 1/2 bath, beautiful modern kitchen, 1-car garage in basement. Everything in very good condition. Lots of game. \$330,000.

LANCASTER COUNTY

54A general farm, 37A tillable, 11A pasture, 4A woods, bank barn, shop, 2 1/2 story brick dwelling, 4 BR built 1854, oil H/W cast iron BB heat. \$338,000.

38A - 28A tillable, 10A woods and pasture, small stream, no buildings, can be subdivided. Perc for standard system. \$269,900



Gene Kreider,
Realtor
717-898-2345

COLDWELL BANKER

HOMESALE SERVICES GROUP

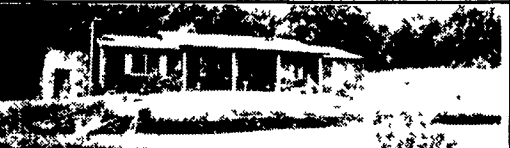
1255 S Market St
Elizabethtown, PA, 17022
717-361-HOME 717-665-HOME
717-367-1112 (Fax)
1-800-850-1069 (PA Only)
717-367-3500 or 717-653-6600



TIOGA CO. DAIRY FARM barn/pipeline, bulk tank, heifer barn/stable cleaners, beautiful remodeled farmhouse, 100 acres / 85 tillable. \$249,500



BRADFORD CO. FARMETTE 144 pen veal barn (could be converted to beef, etc.) 10.5 acres, and 4 bdrm home. \$99,500



BRADFORD CO. RETREAT 57 1/2 acres provide privacy and the perfect setting for this private 8 acre lake. Three bdrm brick home overlooking lake. \$249,900

America's Choice Real Estate

SAYRE OFFICE 910 North Elmira Street, Sayre, PA 18840

PHONE: 717-882-9600 FAX: 717-882-9800



Approx. one acre more adjoining acreage available. Borders Elk Creek, Sullivan County, Pa. Elkland Township, 2 mi. to State Game Land 12-24,000 acres, 15 mi. to Eagles Mere, Pa. One mile to Camp Brule Boy Scout Camp. Remodeled School House, Circa 1887-1920, Stone fireplace, original hardwood floors, knotty pine paneling thru-out, three bedrooms, large living room, dining/kitchen area, bath with shower, large screened front porch.

717-924-3831

Ideal Milking Parlor setup on approx. 57.4 acres w/nice 3 BR ranch home w/full basement. Highlights of this operation include a double 4 parlor free stall building, 3 silos w/unloaders, bunk feeder, plus concrete cow lot. Also a large machinery and hay storage building w/south facing lean for feeding hay plus more good buildings. All located within 1 mile of Lancaster, Wisconsin.

Approx. 245 acre well-maintained dairy farm located 1-1/2 miles from Lancaster, WI. This fine setup includes a very nice 4 BR, 1 story home w/basement. Good looking 2 story 55 cow dairy barn w/cattle shed next door, housing, barn cleaner. Additional features include calf building w/southern exposure and silo w/bunk. Approx. 160 tillable acres w/fair amount of Fayette soils. This farm is worth calling on.

Alderson Realty

Loren and Teresa Alderson
608-822-3581
608-822-3584 Fax

South Central PA Farms

Serving Franklin, Fulton and Adams Counties



PAUL GUNDER
Selling Farms
for over 18 years

4.23 ACRES! - Completely redone farmette. Beautiful country location. \$129,900 (LF-FL2551314TL)
GREAT VIEWS - Approximately 52 acres. House and barn in good condition. Call for details. \$150,000. (LF-FL2561268EG)

MOUNTAIN VIEWS! - 33 acres with stream and view of the Tuscarora Mountains. Just minutes from Whitetail Ski Resort. 4 bedroom home with large open living area. Barn. \$276,000. Or horse, barn & stream on 13 acres for \$205,000. (LF-FL2512263PG)

FARMETTE - In super condition. 5 bedroom home, barn, carriage, milk & smoke houses, bee hive oven, chicken, turkey & hog houses, fencing, pond, stream, pasture, 2 wells, 2 septic systems and 16 1/2 acres. \$229,500 (LF-FL2591286EK)

23 ACRES FARMETTE - Large Morton building (80x40). Large rancher over 3,000 sq ft, 5 bedrooms, 5 stall building used for horses. \$259,900 (LF-FL2602280SG)

BUSINESS POTENTIAL - 21 acres with highway commercial zoning. Near I-81 exit 3 in PA. \$269,000 (LF-FL2556991HB)

FRANKLIN CO., PA - Private setting w/your own wildlife sanctuary on 30 acres of woods & farmland. Features a newer ranch-style house w/beautiful views of 2 mountain ranges. A great get-away w/easy access to I-81. \$284,000 (LF-FL2571588DH)

DEVELOPMENT POTENTIAL - 55 acres with road frontage on Route 997 in Quincy Township. Call for details. \$350,000 (LF-FL2422797PG)

116 ACRE TURKEY FARM - also being used for small dairy operation and crops. Numerous outbuildings. Pond, 3 bedroom home. Call for details. \$650,000 (LF-FL2540055PG)

DEVELOPMENT POTENTIAL - 100 acres with large farm house, steel shed, heifer barn, milking parlor, and wagon shed. \$675,000 (LF-FL2509987EG)

Paul Gunder
Penn 1st Realty

1814 E. Main Street, Waynesboro PA
717-762-7114, ext. 116
1 (800) 582-2534
Member of PA Farm Bureau