



**Dump Truck
Tri-Axle
1978
PAYSTAR
5000**

**350 Big Cam Cum., Very Good
Condition, Ready To Work
\$19,500 OBO
(717) 949-2287**



**Hiab 260 10 Ton Crane
27' Knuckle Boom, Hatz Diesel, Rolling
Base. With 1989 45' Dorsey Trailer
\$29,500 (717) 355-2361**



**1988 Mack R688S, 350 HP, 9 Spd. Maxidyne, A/C, P/S, A/R
Suspension, A/R Cab, 11/24.5 Tires, Jake Brake, 38K, Rears, 20K
mi. on Major Overhaul & New Clutches, Jerr Dan Rollback Dump,
Combination 16-Ton Hoist Winch, Pintle Hook & Class 3 Hitch
w/10,000 Tag-a-long Trailer.**

Call For More Information 717-355-2236

- 98 Dodge Ram 3500 15 Pass Maxi. White 360 V-8, AT, AM/FM/Cass, PW, PL, CC, Tilt, Dual AC, Air Bags, 19,900 Mi **\$19,800**
- 97 Chevy S-10 LS 4x4 ZR3, White/Gold, 4 3 V-6, AT, AC, Air Bag, 52,990 Mi **\$13,900**
- 96 GMC Safari SLT, AWD, 8 Pass, Blue/Gray, 4 3 V-6, AT, AM/FM/Cass, PW, PL, CC, Tilt, Dual AC, Pwr Seats, Keyless Entry, Air Bags, 44,400 Mi **\$15,900**
- 95 Chevy 1500 Tahoe LS 4x4, Black, 350 V-8, AT, AC, PW, PL, CC, Tilt, AM/FM/Cass, CD, Pwr Seat, Keyless Entry, 52,371 Mi. **\$20,900**
- 95 GMC Sonoma SLS, 4x4, Green, 4 3, V-6, 5 Spd, AM/FM/ST, 82,907 Mi **\$8,900**
- 94 Ford Ranger XLT, Green, 4 Cyl, 5 Sp, AM/FM/Cass 65,403 Mi **\$6,600**
- 93 Ford Explorer XLT, 4 Dr, 4x4, Blue, 4 0 V-6, AT, AM/FM/Cass, AC, PW, PL, CC, Tilt, 71,835 Mi **\$10,900**
- 92 Ford F 250 XLT Ext Cab, 4x4, White, 351 V-8, AT, AM/FM/Cass, AC, PW, PL, CC, Tilt, 8800 GVW, 75,659 Mi **\$11,800**
- 92 Ford Club Wagon XLT, Maxi, 11 Pass, Red/White, 351 V-8, AT, AM/FM/Cass, PW, PL, CC, Tilt, Dual AC, Pwr Seat, 98,678 Mi **\$9,800**
- 91 Chevy 1500 4x4, Black, 305 V-8, AT, AM/FM/Cass, AC, 93,907 Mi **\$8,900**
- 96 Dodge Ram 2500 Laramie SLT 4x4, V 10, AT, AC, CR, Tilt, PW, PL, AM/FM/CD, Pwr Seat, Air Bag, Black, 52,115 Miles **\$15,800**

**Brubaker's Auto Sales
Myerstown, PA
717-866-5237**

KEIM
YOUR CHEVY GEO FAMILY

(717) 768-8225
(800) 223-KEIM

RT. 30 Lincoln Highway East
Paradise, PA 17562

**YOUR TRUCK, VAN & 4x4
HEADQUARTERS
1-800-223-KEIM**



91 GMC SAFARI
Extended Passenger Van, V8,
AT, A/C, PW, PL, Power Seat,
70,000 Mi



94 GMC EXTENDED CAB
4WD 1500, 350 V8, AT, A/C,
Custom Leather, 60,000 Mi



94 CHEVY EXTENDED CAB
4x4, 1/2 Ton, Dark Blue, AT, AC,
PW, PL, 350 V8, 57,000 Mi



**96 CHEVY ASTRO
CARGO VAN**
4 3 V6, At, A/C, PW, PL,
28,000 Mi



**94 CHEVY FULL SIZE
BLAZER**
4x4, 2 Door, Black, 350 V8, AT,
A/C, 50,000 Mi



95 FORD F700
18' Van Body 21,000 GVW,
19,000 Mi



**96 DODGE DAKOTA
CLUB CAB**
4WD V8, AT, A/C, PW, PL, Cass

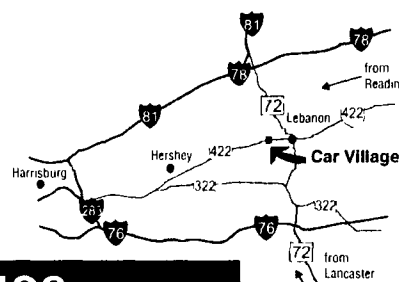


98 CHEVY EXPRESS VAN
G10 8 Pas, V8, AT, A/C, PW,
PL, 17,000 Mi

**Business Hours:
Mon.-Fri. 9 to 9;
Sat. 9-4**

2300 W.
CUMBERLAND ST.
(Rt. 422)
LEBANON, PA 17042
(Across From
Lebanon Valley Mall)

CAR VILLAGE
HEAVY DUTY TRUCKS



PHONE 717-274-2000 Toll Free 1-800-650-1420



4x4 FLATBED 89 GMC SUPER CAB
Diesel Power, AT, A/C, Nice Aluminum Bed, Storage
For Tools \$11,900



95 DODGE 2500 4X4
The Right Tk At The Right Price, Cummins Diesel,
AT, A/C, Trailer Tow Pkg, Only 55,000 Miles, Real
Clean \$19,900

**TOW MACHINES
4x4 Chevy
Super Cab Dually
96 & 93 Available
High Output 6.5 Turbo Diesel
AT, A/C, Low Miles,
New Tk. Warranty**



4x4 MECHANICS TRUCK - 97 DODGE 3500
A Rare Find, But A Real Nice One, Cummins Diesel
Of Course, Auto, A/C, Vinyl Seat & Floor,
9 Ft Stall Body Ladder Racks



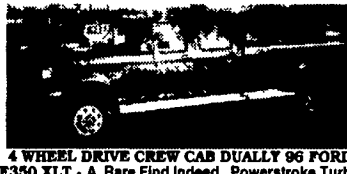
4x4 CREW CAB 97 FORD F350 XLT
Plenty of Room & Plenty of Power, Powerstroke
Diesel, AT, A/C, All Options, Limited Slip 4 10 Gear,
Heavy Duty Trailer Pkg, A Must See



FLATBED DUMP 90 FORD F350 XL
7 3 Diesel, AT, 12 Ft, Steel Dump,
Vinyl Floor & Seat, 11,000 GVW



97 FORD F250
2 Wheel Drive, 7.3 Diesel, AT, Gooseneck Hitch
\$3,900



**4 WHEEL DRIVE CREW CAB DUALLY 96 FORD
F350 XLT - A Rare Find Indeed, Powerstroke Turbo
Diesel, AT, A/C, Nice, 40/20/40 Seat, Limited Slip 4 10
Gears HD Trailer Tow Pkg, Aluminum Wheels, Lock
Out Hubs**



RACK BODY - 91 CHEVY HD 3500
Great Farm Truck, Big & Strong, Heavy 15,000 GVW,
V8, Auto, Runs Well
\$12,900



4x4 DIESEL SUPER CAB - 93 FORD F250 XLT
Looks Good, 5 Sp, Manual Trans, 7.3 Diesel A/C
Dual Tanks, Loaded XLT
\$16,900



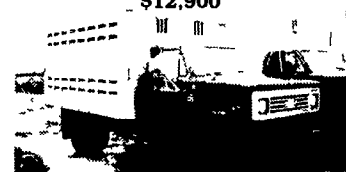
1 TON PICKUP - 97 FORD F350 4X4
Real Nice, Only 28,700 Miles, Powerstroke Turbo
Diesel, 5 Spd., AC, Solid Front Axle, 9,000 GVW,
Vinyl Seat & Floor



HARD TO FIND 99 FORD F350 SUPER CAB
DUALLY 4X4 A Real Pullin Machine, Powerstroke
Turbo Diesel, AT, A/C, Limited Slip 4 10 Gear,
6 Way Pwr Seat, Alum Wheels



1 TON DIESEL 96 FORD F350 XLT
Heavy Duty Solid Front Axle, Lock Out Hubs,
Powerstroke Turbo Diesel, AT, A/C, Vinyl Floor Mat,
37,000 Miles



CATTLE HAULER - 77 CHEVY C-60
19,000 GVW, 12 Ft Eby Body, 350 V8, 4 Sp,
Trans, 2 Speed Axle
\$2,900



4x4 DIESEL SUPER CAB 95 FORD F250 XLT
A Good Looker Only 33,000 Miles, Powerstroke
Turbo, AT, A/C, Power Everything, Lock Out Hubs,
Trailer Tow Pkg



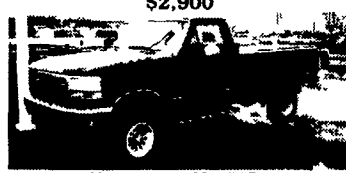
4x4 HEAVY DUTY SUPER CAB 94 FORD F250 XL
Runs & Drives Very Nice, Very Solid Truck, 351 At, A/C,
Lock Out Hubs, Vinyl Seat & Floor, Heavy 3/4 Ton,
Great Tk. to Have Around The Farm
\$13,900



**CHEVY 1 TON 4 WHEEL DRIVE
94 CHEVY R3500 CHEYENNE**
Nice, Clean, 53,000 Miles, 6 5 Turbo Diesel, AT,
A/C, Vinyl Floor, New Insp. Ready To Work



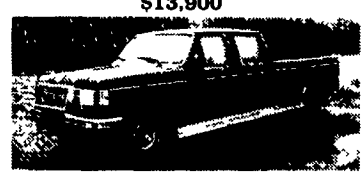
**5 SP POWERSTROKE - 4 WHEEL DRIVE
96 FORD F250 SUPER CAB**
Loaded XLT, Beautiful, Only 24,000 Miles,
Aluminum Wheels, Tow Pkg, Limited
Slip 4 10 Gears, Gotta Drive This One!



1 TON 4X4 - 94 FORD F350 XLT
Turbo 7 3 Diesel, AT, A/C, 4 10 Gears,
Solid Front Axle, Lock Out Hubs, Dual Tanks,
Only 64,000 Miles



**4 DOOR SHORTBED 4 WHEEL DRIVE 97 FORD
F350 XLT Real Pretty, Real Nice All Options
Powerstroke Diesel AT, A/C Trailer Tow Pkg,
Remaining New Tk Warranty, A Must See**



CHEAP DIESEL 4 DOOR - 90 FORD F350
7.3 Diesel, 5 Sp., Dual Tanks, Excellent Body
\$6,900



DIESEL POWER 92 CHEVY 3/4 Ton
Diesel, Auto, Great Tk For Around The Farm
\$1,900



4x4 GAS 95 FORD F250 XLT
Heavy Duty 8600 GVW 3/4 Ton, 358 f.i. V8,
Auto, A/C, Trailer Tow Pkg, Dual Tanks, Only
51,000 Clean Miles



**ONLY \$19,900
4 WHEEL DRIVE - 95 DODGE DUALLY**
Cummins Turbo Diesel, AT, A/C, Class 3 Hitch,
A Powerhouse Pulling Machine



**ALUMINUM DUMP 4 WHEEL DRIVE, 96 FORD
F350 XLT Powerstroke Diesel 5 Sp., A/C, Eby
Body Frame, Mt. Tool Box, 4.10 Gear, Real Nice**