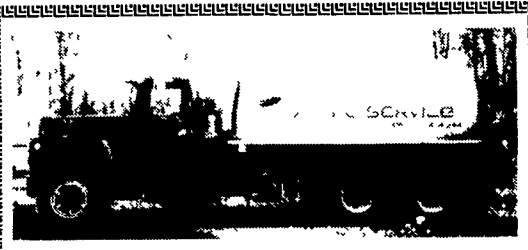
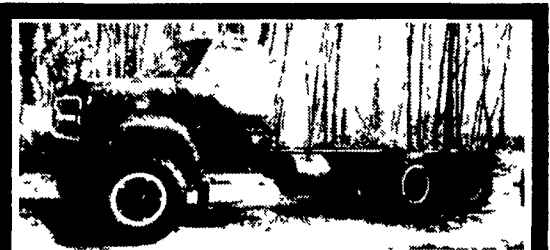


**BICYCLE CARRIERS**  
 SAVE \$\$  
 FREE UPS  
**1-800-WEAVER-D**  
**1-800-932-8373**

**TRUCKERS**  
 27' RATCHETS.....\$15.95  
 WINCH STRAPS....\$12.95  
 RUBBER T. STRAPS...54¢  
 COMPLETE ROLL TARP SYSTEMS  
**TIRONIE TARPS**  
 (800) 874-2928 • FAX: (570) 584-3127



**1977 Mack R-Model**  
 5 Spd., 300 Motor, 1995 Vacuum Tank, 3,300 Gal. - AC4 Vacuum Pump, Excell. Cond.  
**\$32,500 - 610/826-4381**



**1974 Chevy Tandem**  
 427 Gas Motor, 5x4 Spd. Trans., Works Good.  
**\$3,500 - 610/826-4381**

**CAN'T FIND NPR GAS CHASSIS?**

**Lease a New Isuzu and your FIRST PAYMENT IS ON US!** It just keeps getting better. Call Keith for details.

**We Thank Our Customers For A Great '98. We Are Extending Our "Year End" Deals through February On In Stock Isuzu's**



**93 CHEV G30 HD**  
 14' Body, 14,000 GVW



**98 & 99 ISUZU NPR**  
 NPR-Gas, NQR & FTR Models In Stock Call Keith For Yours



**94 ISUZU NPR GAS**  
 13250 GVW, A/C, AM/FM Cass, 16' Van w/Ramp, Under 20,000 Miles (N.A.P) Call Keith



**86 IVECO Z110 14' VAN**  
 11,600 GVW, New Tires, 105,000 Miles, Nice Truck - Call KEITH

Berks, Lebanon & Schuylkill Counties **ONLY AUTHORIZED** Isuzu Dealer

**"0" DOWN LEASE PROGRAM CONTINUES INTO 1999 - CALL NOW!**

**ISUZU TRUCK OF READING**  
**READING MACK DIST.**  
**800-485-2556** **4226 Pottsville Pike, Reading, PA**



**83 Eagle Wagon Ltd.**  
 4 WD - 115,000 Miles



**83 GMC - 16 Passenger Mini Bus**  
 V-8, Auto, Runs Good

**4 I-Beams**  
 49' Long, 28" High w/12-1/2" Web



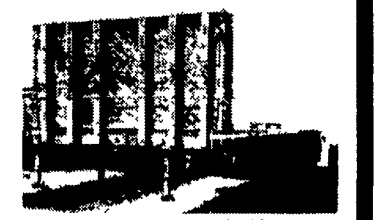
**Aluminum Tanker/Trailers**  
 7500 gal and up



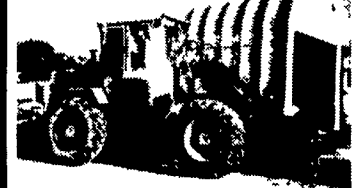
**12' Reefer Body,**  
 under body refrigeration unit, Uses 220 electric Has damage



**1993 Toyota Pickup**  
 4 Cyl, 5 Spd Trans, AM-FM Radio, A/C, Excellent Condition, High Mileage



**9 40'-45' 1970's & Newer Steel Flatbed Trailers**  
 some have sliding tandems, all in good condition **\$2,500/Ea. and up**



**Michigan Loader Model L30**  
 Quick Coupler, Comes With 1 Yard Bucket and 60" Forks, Runs Excellent



**W7 Case Loader.,**  
 15 5x25 tires, runs good serial #9900486



**1500 gallon Sludge Tank**



**3 In Stock!**  
 1996 Ford E150 Clubwagon Chateau, XLT, 7-8 Pass, 5.8 V8, Auto, OD, Dual A/C Heat, Privacy Glass, PW, PL, Tilt, Cruise, 22-54K Mi, 3 In Stock



**Powerstroke Diesel**  
 1997 Ford E350 Super Clubwagon XLT 15 Pass, 7.3 Powerstroke Diesel, Auto, OD, Dual A/C, Heat, Privacy Glass, Tilt, Cruise, PW, PL, 25K Mi #2873



**New Flatbeds Available**  
 Sizes currently available are 12', 14', 20', 22' and 24' Racks are also available.



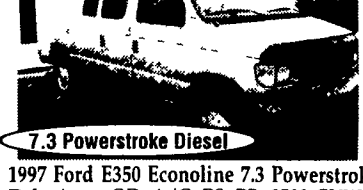
**1988 IH S-1594**  
 DT466 Engine, 5 Spd, Single Rear, 18' Van Body, 26,500 GVW



**Forklifts For Sale**  
 Hyster 2,000 lb capacity, 3 wheeler, propane gas, solid tires, 92" Fork height, 48" forks  
 Towmotor 4,000 lb capacity, 2 stage mast, 108" Fork height, 42" forks, solid tires  
 Towmotor 2,000 lb capacity, 106" Fork height, 42" forks, solid tires



**3 In Stock!**  
 1998 Ford E350 Super Clubwagon XLT, 15 Pass, 6.8 Triton V10, Auto O/D, Dual A/C Heat, Privacy Glass, PW, PL, Tilt, Cruise, 25K-30K Mi, 3 in stock



**7.3 Powerstroke Diesel**  
 1997 Ford E350 Econoline 7.3 Powerstroke Dsl., Auto, OD, A/C, PS, PB, 9500 GVW, 28K Mi, #2874



**Clark Crane, 14 Ton Capacity,**  
 4-53 Detroit, 60' boom, 14.00x24 tires, runs good serial #720



**94 IH Model 4900**  
 DT466 engine, 5 spd, single rear, air brakes, A/C, 32,900 GVW, double frame, 11x22.5 Budds, 254" W.B 19' NEW Lumber Body w/Ratchet Tie-Downs w/Dumping Hoist



**1948 International**  
 KB Chassis, 50,000 miles, 269 gas engine, 2 spd. trans., hydraulic brakes, excellent condition, been in storage over 30 years.



**3 In Stock!**  
 1995 Ford E150 Clubwagon XLT, 8 Pass, 351 V8, Auto O/D, Privacy Glass, AC, Tilt, Cruise, PW, PL, 22K Mi #2875



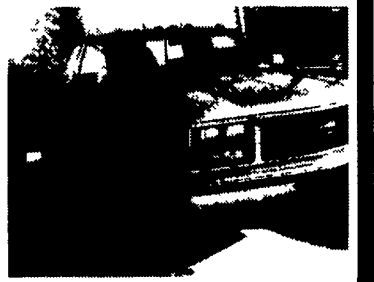
**1995 Ford E250 Super Econoline, 6 Cyl,**  
 Auto, OD, A/C, Tilt, Cruise, Clean Truck, #2829



**1988 Volvo/White**  
 3306 Cat engine, 740 Allison, 44' Rockwell rears, 11x22 5 tires, Galion trash body model FLSC35



**89 GMC Sierra SLE**  
 Chattanooga Choo Choo Custom, 4WD, 16" Aluminum Wheels, Running Board, 132,007 Miles



**91 Isuzu NPR**  
 4 Cyl, Auto, 14' Morgan Van Body, 195,969 Miles



**3 In Stock!**  
 1997 Ford E150 Clubwagon XLT, 8 Pass, 5.4/4.6 Triton V8, Auto O/D, Dual A/C Heat, Privacy Glass, Tilt, Cruise, PW, PL, 30K 40K, 3 in Stock



**1998 Ford E350 Clubwagon XLT, 12 Pass,**  
 5.4 Triton V8, Auto O/D, Dual A/C Heat, Privacy Glass, Tilt, Cruise, PW, PL, 29K, #2789

**Wm. Cohen & Sons, Thorndale, PA**  
**(610) 269-1298 Call between 7 am - 4:30 pm**

**Hundreds of Used Truck Tires For Sale**  
 Sizes from 16" to 24"  
**1979 Crane Carry Cement Mixer, 10 Yd. Rex Mixer, 230 Cummins, 8 Spd. Trans., 44,000 Lb. Rears Asking \$8,500**

**Used Overhead Door For Sale**  
 16'H x 14'W Asking \$550  
**Aluminum Loading Ramps**  
 9'x10', also some other sizes available  
**Yale Electric Hoists**  
 1/2 ton cap., 440 volt, single and three phase. Asking \$350/ea.

**Pedestal Grinder**  
 Baldor 2 Hp., 3 phase, 220 amps  
**Toledo Scale**  
 1,000 lb. Capacity  
**Oil Heaters**  
 250,000 BTU

**Used Van Trailers - For Sale or Rent**



**2 Available**  
 1997 Ford E150 Clubwagon Chateau, 7 Pass, 5.4 Triton V8, dual A/C heat, tilt, cruise, PW, PL, Pwr Seat, Quad Captains, Tow Package, 32K Mi, #2822

**Specializing In Vans**  
**30/4 Way**  
**Auto Sales**  
 770 W Main New Holland, PA 17557  
 717-354-3199 • 717-355-0625 FAX  
 Toll Free 1-877-999-VANS (8267)  
**Many Other Vans In Stock**