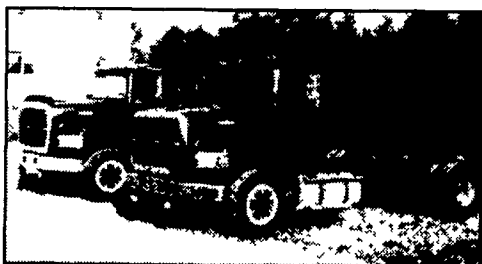


On/Off Road Trucks - 3/8 In. Frame

- Heavy Axles - Cab - Chassis

1995 Ford L9000



16,000 Front Axle, 46,000 Rear, Full lock, 46 Hendrickson Air Ride, Alum. Budds Rear, 162 C.A. -15 Sp. O/D Trans, A.C. Cruise Control, Series 60 - 430 H.P. Jake Brake, F.E.T. Paid

\$46,500-\$43,500

(717) 733-0724

QUALITY USED TRUCKS



97 FORD F150 SUPER CAB
4x4, Lariat, Leather and Much More, 34,000 Miles #P3892



99 FORD F350 CREW CAB
4X4 Power Stroke Diesel, Auto, A/C, Black



96 FORD F250 SUPER CAB
4x4, Power Stroke Diesel, AT and More



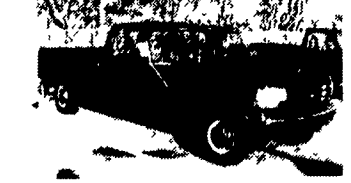
96 DODGE D100 Carvo Van 318
V8, AT, A/C, 35,000 Miles



98 LEFTOVER FORD E150 CONVERSION VAN, Halfback
- Half Luxury Half Utility - Must See



95 FORD F250 Super Cab XLT, Auto,
59,000 Miles

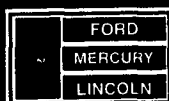


97 FORD F350 Crew Cab, Power Stroke Diesel, AT, A/C,
43,000 Miles

1999 F150 4x4's
40 In Stock
Starting at
\$18,495

Includes all Rebates & Sales Vouchers

Unless the Chapman Emblem is on Your Car or Truck... You Probably Paid Too Much!



CHAPMAN LEBANON

20th & CUMBERLAND STS. - RT. 422 WEST
9-9 DAILY, 9-5 SATURDAY • CHAPMAN HOTLINE (717) 272-7671



~ LIVE FLOOR TRUCK BODIES ~

GREAT FOR

Mulch, Silage, Sawdust, Compost, Manure, Firewood

Unload out the front side discharge or rear of body. Rarely offered for sale, these bodies are built to industrial specs.

~ TRUCKS AND BODIES ~

- 24' * Walking Floor **\$32,000**
(Mounted on a '90 Int. 4900 Tandem Axle Trk)
- 20' **Walking Floor **\$17,000**
**(Mounted on a '86 S1900 Int. S/A)

~ BODIES ONLY ~

- 24' Walking Floor **\$17,000**
- 22' Chain Floor **\$10,000**
- 22' Chain Floor **\$10,000**

~ LOADER ~

- '94 Case 480F Loader (Low Hours) **\$16,500**

These units were in daily use when pulled from service.

For information contact
Mr. Tom Johnson
Eastern Shore Forest Products Inc.
3667 St. Lukes Rd.
Salisbury, MD 21804
410-742-5540



HOSTETLER

Truck Bodies & Trailers

717-667-3921

Milroy, PA - Located between Lewistown
And State College on Rt. 322 in PA.

26' Tandem Dual Gooseneck Flat
Dual Jacks, Deck Over the Neck,
Electric Brakes, Good Condition
\$5,200

Skid Loader Trailers, 82" Between the Fenders, 10,000# GVW

- 14' Long **\$2,545**
- 16' Long **\$2,660**
- 18' Long **\$2,815**

Tool Boxes

36"x18"x18" \$162
24"x18"x18" \$146
30"x18"x18" \$155
42"x18"x18" \$169
48"x18"x18" \$178

Dump Trailers

5'x8' Single Axle 5000# GVW \$2,650
6'x10' Tandem Axle 7000# GVW \$3,495
6'x10' Tandem Axle 10,000# GVW \$3,655

1986 Dodge 3/4 Ton Dump, New Aluminum Dump Body & Hoist, V8, Gas Engine, Automatic, Power Angle Plow
\$7,995

Financing & Leasing Available

Hydraulic Tilt Deck Trailer

19' 10,000 GVW \$3,895
19' 12,000 GVW \$3,995

LEFTOVER '98
25' Montz Gooseneck Flatbed, Adj Dovetail, Deck Over Neck, 14,000# GVW, Triple Ramps
\$5,250

Eby Trailers In Stock, Both Gooseneck & Bumper Pull
Ask About 6.95% Financing or \$150 Cash Back

Corn Pro Bumper Pull Livestock Trailer, Corn Pro, Rubber Torsion Axles, Treated Pine Floor

6 x16 3500# Axles \$3,495
6.8 Wide x 16 Long 3500# Axles \$3,725
6.8 Wide x 16 Long 6000# Axles \$4,045

Meyers heavy duty pickup snowplow, excellent condition. 12' van truck box, rear overhead door, side door. 717-867-2489

Myers 7.5 P/angle, quik lift, unimount, lights, touch pad controls, brand new, \$2,000. (908)534-4144.

New commercial 83x19 tilt bed trailer, 6-ton, \$3995. 609/965-4527.

New commercial 8x24 gooseneck, pop-up dovetail, w/ramps, 7-ton, \$3895. 609/965-4527.

New commercial 8x20 gooseneck, pop-up dovetail, w/ramps & top deck, 7-ton, \$3725. 609/965-4527.

Stake Truck: '86 GMC truck, gas, 5 speed, 28,000 GVW, 55,000 miles, \$4,500 OBO. (610)932-7053.

TRAILERS: Car Mate cargo, landscape gooseneck, car haulers, dump, snowmobile, car dollies. Also parts & service. **FINK'S TRAILER SALES, RD3, 441 Pine RD. (off RT61 & I-78) Hamburg, PA 610-562-4627**

TRUCK PARTS: 3406-CAT, 325HP RTO12513 Transmission SOAD, Rears, 4:33-Ratio, Wet Low System, Leave Message. (610)489-0783.

TRUCK TIRES, USED: 11:00-20, 9:00-20 on 8" rims, \$15/per each tire. Small dome wheel utility bed, \$500. 18' van box w/ side door, \$500. Worth air compressor, \$100. Used 3,000 gallon water tank off truck \$500. Gallion Grader \$100. Call 717-774-7913 9am thru 5pm

WANTED: 1991-1994 Suburban w/454 Motor, 2x4 or 4x4, Call w/Specs. (301)473-4466.

WANTED: 48' flat. Also tank trailer. 717-534-1253



BODY
15' Aluminum Eby Flatbed Body

LIVESTOCK BODIES

- 15'X92X6'6" Eby
- (1) 9'x82"x6' Eby
- 14'x96"x6'3" Eby
- (1) 9'x94"x6'9" Eby
- 19'x96" Eby w/Deck Rail
- 10'x96x6'6" Eby
- 24'x96"x6'6" Eby w/Deck Rail

GOOSENECK

- 1994 Eby 20'x7'x6'6" Wrangler
- 1997 Hart Aluminum Gooseneck
- 24'x7'x6'6", Like New
- 1996 Wilson 24'x8'x8' 1990 Eby 20'x 7-1/2'x6'9"
- 1991 Eby 18'x7'6"x6'9"
- 1996 20'x8'x7'6" Eby
- (1) 1997 24'x8'x6'9" Eby Ruffnecks

M.H. EBY, INC.

1194 Main St.
(Route 23)
Blue Ball, PA 17506
(717) 354-4971
(800) 292-4752

4435 State Route 29
West Jefferson, OH 43162
(614) 879-6901
(800) 752-0507

When agriculture is your life, the equipment choice is Eby.

EBY is the leading manufacturer of aluminum bodies and trailers for agri-transportation. Our products are designed for superior strength, reduced weight for greater payload capacity, minimum maintenance and higher resale value. In addition to premium standard features, we offer full custom options built to your specs.

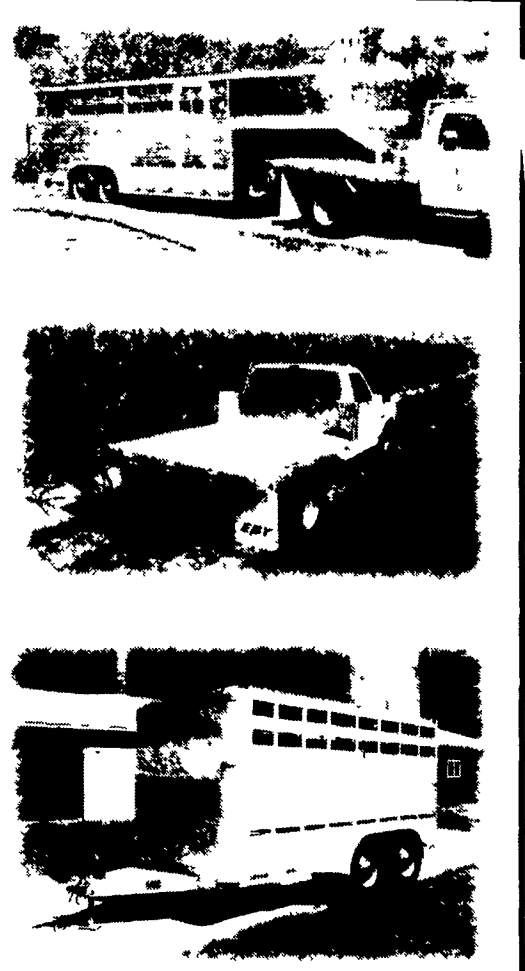
EBY's complete line includes models for every requirement:

- Gooseneck Trailers- lengths 14' - 32'; widths 7', 7'6", 8' and 8'6"
- Bumper Hitch Trailers- lengths 12' - 18'
- Grain Bodies- lengths to 24', plus landscape and general purpose dumps to 12'
- Flatbed Bodies- lengths to 32' in 5 widths
- Landscape Bodies- lengths to 12'

For quality equipment and customer service that works as hard as you do, nobody offers more than EBY.



Blue Ball, PA (800) 292-4752



Call for FREE color literature.