

**North Atlantic Shell Eggs**

January 28  
Atlanta, Ga.

IN PHILADELPHIA, PRICES WERE UNCHANGED TO FOUR CENTS LOWER FOR EXTRA LARGE AND LARGE AND UNCHANGED TO THREE CENTS LOWER FOR MEDIUMS. IN BOSTON, PRICES WERE UNCHANGED TO ONE CENT LOWER FOR LARGE AN UNCHANGED TO TWO CENTS LOWER FOR EXTRA LARGE AND MEDIUMS. IN NEW ENGLAND, PRICES WERE FOUR CENTS LOWER FOR EXTRA LARGE, FIVE CENTS LOWER FOR LARGE, AND TWO CENTS LOWER FOR MEDIUMS. ALL OTHER PRICES WERE UNCHANGED. THE MARKET TONE WAS WEAK AND

HIGHLY AVAILABLE FOR ALL SIZES. BREAKING STOCK SUPPLIES WERE GENERALLY ADEQUATE FOR THE LIGHT AND UNAGGRESSIVE DEMAND. LIGHT TYPE HENS WERE MORE THAN ADEQUATE.

PHILADELPHIA: PRICES TO RETAILERS, SALES TO VOLUME BUYERS, USDA GRADE A AND GRADE A, WHITE EGGS IN CARTONS, DELIVERED STORE DOOR, CENTS PER DOZEN:

RANGE: EXTRA LARGE, .78-.86, LARGE .76-.84, MEDIUM .66-.72.

BOSTON: PRICES TO RETAILERS, SALES TO VOLUME BUYERS, USDA GRADE A AND GRADE A, BROWN EGGS IN CARTONS, DELIVERED STORE DOOR, CENTS PER DOZEN:

RANGE: EXTRA LARGE, 1.15-1.19, LARGE, 1.08-1.11, MEDIUM, .76-.80.

NEW ENGLAND: PRICES PAID TO PRODUCERS, CASES EXCHANGED, GRADE YIELD BASIS, BROWN EGGS LOOSE, AT FARM, CENTS PER DOZEN.

RANGE: JUMBO, 1.27-1.30, EXTRA LARGE, .92-.95, LARGE, .84-.87, MEDIUM, .55-.58, SMALL, .28-.31.

**Delmarva Broiler**

ATLANTA, GA.  
JANUARY 27, 1999

DELMARVA BROILER/FRYER MARKET. FEDERAL-STATE

Movement of ready-to-cook whole birds was slow. Seller offerings were readily available; however, sizes and volumes continued to vary from plant to plant. Live supplies were at least moderate; weights

were mixed and irregular. Processing schedules were moderate to moderately heavy. Less than trucklot asking prices were unchanged at 56 to 70 cents. Trade sentiment was mostly weak. In the parts complex, bone-in breasts remained in close balance. Boneless skinless breasts were fully sufficient for current needs. Leg quarters remained fully adequate. Wings were competitively priced in an effort to stimulate buyer interest.

ESTIMATED SLAUGHTER OF BROILER/FRYERS IN DELMARVA (000)

ESTIMATED ACTUAL AVG. WEIGHT ACTUAL AVG. WEIGHT  
01/27 01/25 01/25 01/20 01/18 2,409 2,392  
5.13 2,409 (R) 5.36

(R) Revised

\*BROILER/FRYER CURRENT

NEGOTIATED PRICES FOR IMMEDIATE DELIVERY INCLUDES MOSTLY MULTIPLE-DROP SHIPMENTS OF BRANDED AND WING TAGGED TO NEW YORK CITY FROM DELMARVA BRANDED U.S. GRADE A RANGE 53-71 WEIGHTED AVERAGE 58.57 NO. OF BOXES 8,273

\*7 of 9 plants reporting.

**Hackettstown Poultry & Egg**

Hackettstown, N.J.

Report Supplied by Auction Tuesday, January 26

Report Supplied by Auction HEAVY FOWL .40-1.35

LB., 2.50 EA.

TURKEYS .25-30 LB.

BROILERS .75-.85 LB.

PULLETS 9.00 EA.

GEESE 4.75 EA.

BANTAMS 1.25-5.25 EA., .45 LB.

ROOSTERS 1.50-2.50 EA., .40-1.40 LB.

BUNNIES 1.00-3.50 EA.

DUCKS .90-2.10 LB.

RABBITS .55-1.55 LB., 1.25-3.00 EA.

PIGEONS 2.00-5.00 EA.

GUINEAS 8.00 EA.

GRADE A EGGS: WHITE

JUMBO, EX. LRGE. .60-.96,

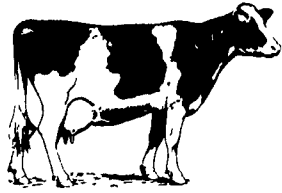
LARGE .50-.80. BROWN,

JUMBO, EX. LRGE. .75-.90,

LARGE .60-.75.



**PENNFIELD DAIRY DAYS**



**MAKE YOUR RESERVATIONS NOW!**

**FEBRUARY 1999**

**Tues., Feb. 2**

**Intercourse, PA - Plain 'N Fancy Restaurant**

**Wed., Feb. 3**

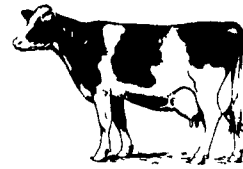
**Lebanon, PA - Lebanon Expo Center**

**Thurs., Feb. 4**

**Cortland, NY - Holiday Inn**

**DAIRY 1999**

- 9:30 a.m.** Milk, Coffee & Donuts  
Visit Displays - Visit with Speakers
- 10:15 a.m.** Meeting Begins Promptly  
**Is Your Dairy Operation Y2K**  
Speaker: Don Mahlandt
- 10:30 a.m.** **Balancing Carbohydrates for Milk Production**  
Speaker: Dr. Tim Snyder, PhD
- 11:00 a.m.** **Managing the Pre-Fresh/Post-Fresh Cow**  
Speaker: Dr. Robert C. LaDue DVM  
Cherry Valley Vet Assoc., Springfield Center, NY
- 11:45-1:00** **Buffet Lunch**
- 1:00 p.m.** **When and How to Use By-Pass Fats**  
Speakers: Dr. William Sanchez PhD  
Dr. Kenneth Cummings PhD  
Church & Dwight Co. Inc.
- 1:30 p.m.** **Feeding Cows to Meet Consumer Demand**  
Speaker: Dr. Tim Snyder, PhD
- 2:00 p.m.** **Panel Discussion - Question & Answer**
- 2:30 p.m.** Adjourn



**Ladies Welcome:** The information presented at these meetings will be directed towards the **FAMILY DAIRY FARM** and its future. Since many wives play a key role in the Family Farm Operation, we would strongly urge both husband and wife to attend as the information presented will be for the "Management Team".

**ADDITIONAL DAIRY MEETINGS SCHEDULED**

\* Tues., Feb. 9 Hoffman Building, Quarryville, PA

\* Tues., Feb. 23 Shadowbrook, Tunkhannock, PA

TO MAKE RESERVATIONS CALL 1-800-732-0467



**pennfield feeds**

Transportation Available



**Hess' Butcher Shop**

Custom Beef and Pork Butchering

Call

(717) 464-3374

**HAY, STRAW & GRAIN SALE**

Every Thursday at 12 NOON

**Vintage Sales Stables, Inc.**

(Rt. 30, 10 miles east of Lancaster in Paradise, PA)

For info. (717) 442-4181 bus. (610) 458-8518 home

**BOWMAN'S STOVE & PATO**

Vermont Castings

**GAS STOVES AND FIREPLACES**

Prices Start at

**\$899<sup>00</sup>**

1060 Division Highway 322 East, Ephrata, PA 17522

1 Block East of Rt. 222

(717) 733-4973

800-642-0310

www.bowmansstove.com

Mon., Tues., Wed. 10 to 6; Thurs., Fri. 10 to 8; Sat. 10 to 4