

1987 GMC Pick-Up 1/2 Ton, 4x4 Cap Included, Excellent Condition. \$5,500. (610)273-5727.

1988 Freightliner conventional, FL-112 S/A tractor, L-10, 300hp, 9spd, 35,000 GVW, P/S, A/C, 84' cab-axle, good condition, \$8,900. (717)362-9111.

1988 Peterbilt, good condition, good farm truck, \$9500. 717-859-6601

1997 Ford F-350 4x4 Centour conversion, one ton, Red & Silver, less than 500 miles. Have 43,000 in it, will take \$35,000 or take over payments. Call eve. 717-588-6350.

1997 GMC Crew-Cab, Dually, 6.5 Liter Diesel, 4WD, Manual Transmission, A/C, AM/FM Cassette. \$17,500. Call Today! (717)354-2613.

250 Cummins complete engine, \$750. Webster 10-ton fertilizer body, chassis mount, \$500. Army trucks (5) 2 1/2 tons, 10 wheelers, GMC 302 gas engine, \$500/ea. 1810 Cargostar International truck, w/20' Morgan van body, new floor, \$3000. 302-734-2910

28' Parker aluminum dump trailer, 2-way door, roll tarp, excellent condition, \$9500. 814/355-0412.

2 Electric Refrigerated storage trailers, 96x45, \$3,500 OBO, 96x45 Dry Van for storage. 717-354-6496 ask for Vern or Robert.

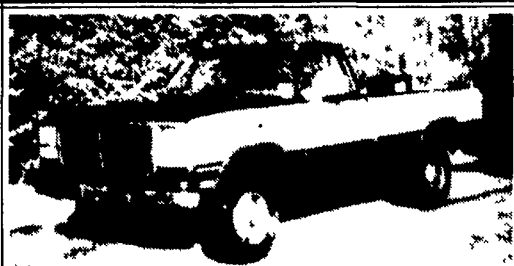
1994 Freightliner FLD120, 3176 Cat, 365hp, 10-spd., Jake, PS, AC, air ride cab, 411 rears, 240WB, heated fuel tank, sliding 5th wheel, dump valve, new steers, new clutch, 485,000 miles, \$31,000 OBO. 717-436-9822

1994 Toyota pickup 4x4, AC, V6, 5-speed, 43K, new tires, R title but excellent truck, \$8500. 717-242-4443

1995 Dorsey 39' Frameless Dump. Air-Ride, Roll-Tarp, Air-Gate, 60" Sides. Rebuilt Cylinder. Good Rubber. \$23,000/obo. 610-689-5771.

1993 Ford F-250 pickup truck, HD, high mileage, loaded and air conditioned, \$5,000. (717)632-0043.

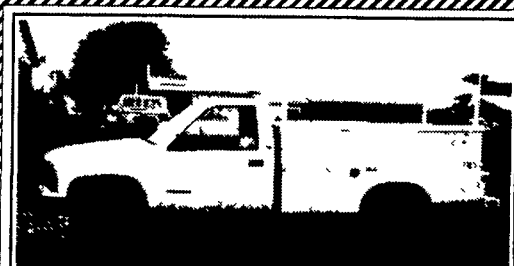
1991 Ford F350 XLT crew-cab 4WD, automatic, diesel, 96,000 miles, very good condition, \$13,000. 610/777-3082.



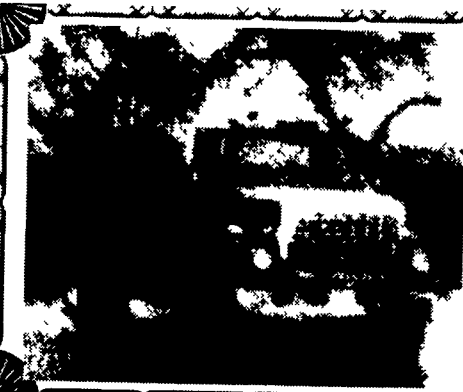
1992 DODGE LE
Cummins 5-Sp., A/C, P/W, P/DL, Tilt, Cruise, AM-FM Cassette. 65,000 Miles
\$13,500
(610) 485-5174



1989 Chevy Truck
350 Eng., 4x4, 550 Gal. S S. Tank, 40' Hydraulic Booms, Foam Marker, Wash Out Tank, Creek Fill Pump, Single or Dual Wheels, Mileage 60,000 mi. Raven Controller & Radar Gun
717-687-6535



'88 CHEVY 3500 UTILITY TRUCK
350 Auto., AM/FM, Air Cond., Class III Rec., 130,000 Mi., Good Cond.
\$4,500 (No Rack)
717-264-7413



1983 Ford 8000
85,820 Mi. on rebuilt
3208 Cat Eng.,
35,000 GVW,
18 ft. Frame
\$3,500 OBO
Call
(717) 336-2804
ask for Jay

1995 F-350 powerstroke automatic, XL, gooseneck, trailer hitch, new tires, excellent condition. (717)274-7582.

1995 F-350 crew cab dually, 7.3 power stroke, diesel, A/T, loaded, 85,000 miles, \$18,900. (717)933-9722.

1992 Ford Cargo Van, 7.3 Diesel, Auto, PS, P.B., Air, High Miles, New Trans., New Inspection. \$5,995
Call 717-865-3488 after 4pm

1992 Dodge Ram 250 LE, Ext. Cab, Cummins Turbo Diesel, Auto., P.S., P.B., P.W., Tilt, Cruise, Am-FM Cass., Good Cond., Runs Excellent. . . . \$8,995
Call 717-865-3488 after 4pm

Quic 'n Easy

RECEIVER HITCH BY DMI™

The Latest In-Tow-Vation!

Cushioned 2" Receiver Hitch

- Fits under your truck bumper mounting directly to your truck frame
- Brings the receiver to your load - extends 7 and swings 12
- Exclusive Proximity Hook up - one person gets it right the first time
- Spring "Cush n" takes the push/pull out of towing lowering stress on the driver and truck drive train
- Tows whatever your truck is rated to tow - exceeds Class IV certification
- Accepts a variety of adapters drawbar ball step up or step down pintle hook and weight distribution system

Never Miss a Hitch Again. DMI

Weaver Distributing
1-800-Weaver-D
RR2, Box 470, Fredericksburg, PA 17026

ALL STEEL REPLACEMENT TRUCK BED

7'X70"W or 80"W
8 1/2' Lx80"W or 90"W
10'Lx8"W, 12'LX8"W

Also Available In 4'x7' and 4'x8'
5'x8' Starting at \$650

UTILITY (TILT OR GATE MODEL) SIZES:
5'x8', 5'x10' 2000# GVW - 5'x10'
6'5" x12', 3000# GVW

UTILITY WITH GATE-SIZES:
16'x77", 18'x77", 7,000# GVW

ALSO 84" WIDE!

CAR HAULER TRAILER:
16'x78" & 18'x78" includes 5' Beaver tail
7,000 lb. GVW 4' self storing ramps

Quality Trailers Built Locally By "PA International"

Car Dollie

Sale \$795

New Trailers Steel Enclosed, single Axle. Call for Sizes

'92 Ford Super Duty XLT w/12' Flatbed \$14,900

Over 200 Trailers In Stock Starting At \$475.00 T-Plates DEALERS WANTED

Highway Hydraulic Dump

BRI-MAR

5'x8', 3000# \$2,150
5'x8', 5000# \$2,495
6'x10', 7,000# \$3,195
6'x10', 10,000# \$3,495
7'x12', 10,000# \$3,995

FREE BATTERY

LOW PROFILE DUMP TRAILERS

BRI-MAR

6'x10' GVW low profile dump trailers w/ landscape gate

7,000# \$3,495
10,000# \$3,995

FREE BATTERY

Starting At \$3995 w/4' Adj. Tail

GOOSENECK SIZES: 20'x8' 12,000# or 14,000# GVW, 24'x8' 14,000# GVW

Low Profile construction
16'x77" & 18'x77" 10,000 # GVW

DECK-OVER CONSTRUCTION
14'x7' With Tail, 3000# or 4000# GVW
16'x8' With Tail, 7000# GVW
20'x8' w/Tail 10,000# GVW **\$3,295**

KUTZ FARM EQUIPMENT, INC. 8 AM-5 PM Monday Thru Friday
Pine Grove, PA 570-345-4882 FAX 570-345-2881 8 AM-12 Saturday Or By Appointment

1984 Peterbilt 359 Tractor 400-Hp Cummins, 15 Speed, Air Ride, Wet Lines, Dual Vortech Air Cleaners, Jake Brake, Alcoa Wheels, Bridgestone Tires 90% Rubber, Air Slide 5th Wheel, Excellent Overall Condition.

1996 Peerless 45' Aluminum Trailer With Keith Walking Floor, 80% Tires, Sliding Tandems, Roll Tarp, 96" Sides, Excellent Overall Condition.

Take Both \$49,500 or best offer.
Must Sell
Can Help With Financing
410-893-3623

QUALITY USED TRUCKS

97 FORD F150 SUPER CAB
4x4, Lariat, Leather and Much More, 34,000 Miles #P3892

99 FORD F350 CREW CAB
4X4 Power Stroke Diesel, Auto, A/C, Black

96 FORD F250 SUPER CAB
4x4, Power Stroke Diesel, AT and More

96 DODGE D100 Carvo Van 318
V8, AT, A/C, 35,000 Miles

98 LEFTOVER FORD E150
CONVERSION VAN, Halfback - Half Luxury Half Utility - Must See

95 FORD F250 Super Cab XLT,
Auto, 59,000 Miles

97 FORD F350 Crew Cab,
Power Stroke Diesel, AT, A/C, 43,000 Miles

97 FORD E150 HI-TOP
CONVERSION VAN, V8, AT, TV, VCP, Low Miles, Like New - Priced To Sell PF3834

Unless the Chapman Emblem is on Your Car or Truck... You Probably Paid Too Much!

CHAPMAN LEBANON

20th & CUMBERLAND STS. - RT. 422 WEST
9-9 DAILY 9-5 SATURDAY • CHAPMAN HOTLINE (717) 272-7671

A Division of THE CHAPMAN AUTO GROUP