

NE Chicken

**Pts. 1&2
ATLANTA, GA.**

JANUARY 21, 1999

NORTHEAST BROILER/FRYER PARTS - PART I FEDERAL-STATE
Trucklot buying activity was generally light and selective. Offerings of bone-in breasts were limited and held in firm hands. Boneless skinless breasts were fully adequate and slow to clear. Drumsticks were closely cleared. The availability of jumbo wings was increasing while machine cuts were in a range of balanced to well cleared. Other cuts were fully sufficient for current needs. The market tone was fully steady on whole breasts and drumsticks, cautiously steady on the balance.

PRICES PAID PER POUND, ICE

PACKED AND CO2 PACKED BROILER/FRYER PARTS, DELIVERED TO FIRST RECEIVERS IN POOL TRUCKLOT AND TRUCKLOT QUANTITIES.

ITEM CURRENT NEGOTIATED TRADING*

BREAST - B/S 155 BREAST - WITH RIBS 75-76 BREAST - LINE RUN 75 LEGS 23-24 LEG QUARTERS (BULK) 15-16 DRUMSTICKS 34-35 THIGHS 23-24 WINGS (WHOLE) 90-91 BACKS AND NECKS (STRIPPED) 12-14 LIVERS (5 POUND TUBS) 40-45 GIZZARDS (HEARTS) 45-50

INCLUDES NEW YORK CITY METROPOLITAN AREA, NORTHERN NEW JERSEY, MASSACHUSETTS, CONNECTICUT, RHODE ISLAND, AND PENNSYLVANIA (NORTHEAST OF HARRISBURG). * TODAY'S NEGOTIATED SALES AS OF 11:30 A.M.

Belleville Poultry

Belleville, Pa.

Wednesday, January 20

Report supplied by Auction

Geese: none.
Turkeys: none.
Guineas: 4.00 ea.
Roosters: 4.00-6.75 ea.
Bantams: 1.00-4.00 ea.
Heavy hens: 2.00-4.00 ea.
Silkies: none.
Muscovy hens: 5.75-6.50 ea.
Muscovy drakes: 10.00-14.00 ea.
Mixed ducks: none.
Barn pigeons: 1.60 ea.
White birds: 2.00 ea.
Fancy birds: none.
Peacocks: none.
Pheasants: none.
Doves: none.

Quail: 1.30 ea.
Guinea Pigs: 1.50-4.25 ea.
Rabbits: under 4 lbs. 1.50-5.00 ea., 4-6 lbs. 5.00-7.50 ea., over 6 lbs. 7.00-12.00 ea.
For more information phone 717-242-2898.

Delmarva Broiler

ATLANTA, GA.

JANUARY 21, 1999

DELMARVA BROILER/FRYER MARKET. FEDERAL-STATE

Movement of ready-to-cook whole birds was generally fair. Seller offerings were adequate. Live supplies were moderate with weights ranging light to heavy, mostly desirable to heavy. Processing schedules were moderate to heavy. Less than trucklot asking prices were unchanged at 56 to 70 cents. Trade sentiment was mostly steady.

In the parts complex, bone-in breast were in tight supply. Drums were fully steady. Wings were cautiously steady.

ESTIMATED SLAUGHTER OF BROILER/FRYERS IN DELMARVA (000)

ESTIMATED ACTUAL AVG. WEIGHT ACTUAL AVG. WEIGHT
01/21 01/19 01/18 01/17 01/16 01/15 01/14 01/13 01/12 01/11 01/10 01/09 01/08 01/07 01/06 01/05 01/04 01/03 01/02 01/01 1998
5.06 2,492 5.08

*BROILER/FRYER CURRENT NEGOTIATED PRICES FOR IMMEDIATE DELIVERY INCLUDES MOSTLY MULTIPLE-DROP SHIPMENTS OF BRANDED AND WING TAGGED TO NEW YORK CITY FROM DELMARVA BRANDED U.S. GRADE A RANGE 50-77 WEIGHTED AVERAGE 60.39 NO. OF BOXES 7,087

*7 of 9 plants reporting.

Grantsville

Livestock

Grantsville, Maryland
Report Supplied by Auction
Sat., January 16

STOCK BULLS AND STEERS 200-500 LBS.
50.00-60.00.

STOCK HEIFERS
35.00-55.00.

SLAUGHTER STEERS
GOOD TO CHOICE, NONE AVAILABLE; MEDIUM TO GOOD, NA.

HOLSTEIN STEERS
GOOD 30.00-49.00, LIGHT 40.00-48.00.

SLAUGHTER HEIFERS
GOOD TO CHOICE AND MEDIUM TO GOOD, NA.

BULLS: HEAVY
30.00-45.00, LIGHT 32.00-42.50.

COWS: UTILITY HOLSTEINS
32.00-37.75, CANNERS 27.00-35.00, CULLS 27.00 AND DOWN.

VEALS GOOD TO CHOICE
UP TO 94.00, MEDIUM TO GOOD UP TO 60.00.

BOB CALVES: 30.00 AND DOWN.

HOLSTEIN BULL CALVES
RETURN TO FARM: 90-120 LBS. UP TO 75.00.

HOLSTEIN HEIFER CALVES
RETURN TO FARM UP TO, NONE AVAILABLE.

BEEF X CALVES
RETURN TO FARM, UP TO 55.00.

HOGS: TOP QUALITY
UP TO 39.00, HEAVY UP TO 37.00, LIGHT UP TO 34.00, FEEDER PIGS BY THE HEAD UP TO 20.00.

SOWS: UP TO 35.00.

MALE HOGS: 2.00-9.00.

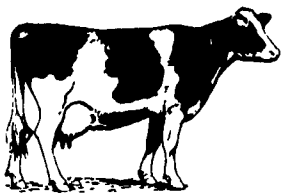
LAMBS: 70-85 LBS. UP TO 90.00, 85-125 LBS. UP TO 90.00, 30-60 LBS. UP TO 107.50, CULLS UP TO 60.00.

SHEEP: UP TO 47.00.

GOATS: ALL BY THE HEAD. LARGE 40.00-149.00; MEDIUM 20.00-65.00; SMALL 10.00-35.00.



PENNFIELD DAIRY DAYS



MAKE YOUR RESERVATIONS NOW!

FEBRUARY 1999

Tues., Feb. 2

Wed., Feb. 3

Thurs., Feb. 4

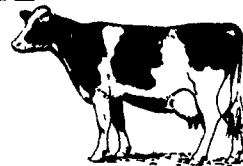
Intercourse, PA - Plain 'N Fancy Restaurant

Lebanon, PA - Lebanon Expo Center

Cortland, NY - Holiday Inn

DAIRY 1999

- 9:30 a.m.** Milk, Coffee & Donuts
Visit Displays - Visit with Speakers
- 10:15 a.m.** Meeting Begins Promptly
Is Your Dairy Operation Y2K
Speaker: Don Mahlandt
- 10:30 a.m.** **Balancing Carbohydrates for Milk Production**
Speaker: Dr. Tim Snyder, PhD
- 11:00 a.m.** **Managing the Pre-Fresh/Post-Fresh Cow**
Speaker: Dr. Robert C. LaDue DVM
Cherry Valley Vet Assoc., Springfield Center, NY
- 11:45-1:00** **Buffet Lunch**
- 1:00 p.m.** **When and How to Use By-Pass Fats**
Speakers: Dr. William Sanchez PhD
Dr. Kenneth Cummings PhD
Church & Dwight Co. Inc.
- 1:30 p.m.** **Feeding Cows to Meet Consumer Demand**
Speaker: Dr. Tim Snyder, PhD
- 2:00 p.m.** **Panel Discussion - Question & Answer**
- 2:30 p.m.** **Adjourn**



Ladies Welcome: The information presented at these meetings will be directed towards the **FAMILY DAIRY FARM** and its future. Since many wives play a key role in the Family Farm Operation, we would strongly urge both husband and wife to attend as the information presented will be for the "Management Team".

ADDITIONAL DAIRY MEETINGS SCHEDULED

* Tues., Jan. 26 Fleetwood Grange Hall, Fleetwood, PA

* Wed., Jan. 27 Howard Johnson, Millington, MD

* Thurs., Jan. 28 Berrysburg Community Center, Berrysburg, PA

* Tues., Feb. 9 Hoffman Building, Quarryville, PA

* Tues., Feb. 23 Shadowbrook, Tunkhannock, PA



TO MAKE RESERVATIONS CALL 1-800-732-0467

pennfield feeds

Transportation Available

Hess' Butcher Shop

Custom Beef and Pork Butchering

Call
(717) 464-3374



Vermont Castings
GAS STOVES AND FIREPLACES

Prices Start at ***899***

1060 Division Highway
322 East,
Ephrata, PA 17522
1 Block East of Rt. 222
(717) 733-4973

800-642-0310

www.bowmansstove.com
Mon, Tues, Wed, 10 to 6; Thurs, Fri, 10 to 6; Sat, 10 to 4