

Hackettstown Poultry & Egg

Hackettstown, N.J.
 Report Supplied by Auction
 Tuesday, January 12
 Report Supplied by Auction
 HEAVY FOWL .35-.65 LB.
 LEGHORN FOWL .35 LB.
 MIXED FOWL .50 EA.
 ROASTERS .50-.60 LB.
 BROILERS .50 LB.
 BANTAMS .75-1.00 EA., .60-.70 LB.
 ROOSTERS .60-.80 LB.
 BUNNIES 1.25-2.00 EA.
 DUCKS .35-2.20 LB.
 RABBITS 2.75-5.50 EA., .80-1.30 LB.
 PIGEONS 2.25-3.75 EA.
 GRADE A EGGS: WHITE JUMBO, EX LRGE. .59-.85, LARGE .50-.80; BROWN, JUMBO, EX. LRGE. .70-.90, LARGE .50-.75, MED. .40.

were adequate. Liquid and frozen eggs (ingredients included) processed under federal inspection in the Eastern region for the week ending January 2, 1999 were 2% less than last week, and 10% less than the same week last year. Shell egg supplies were adequate to fully adequate.

WHOLESALE SELLING PRICES (CENTS PER POUND IN 30 LB. CONTAINERS)
 TRUCKLOTS LTL (MIN. 25 CONT.) RANGE MOSTLY RANGE
 WHOLE 46-53 47-48 54-64 BLENDS
 (J) TFEWR 70-85 WHITES 38-43 39-41 44-50 SUGARED YOLKS (MIN 43% SOLIDS) 68-72 68-69 73-81 SALTED YOLKS (MIN 43% SOLIDS) 64-69 65-67 70-85
 (J) - WHOLE PLUS YOLK PLUS SWEETENER, GENERALLY 28-32% EGG SOLIDS.

NE Chicken Parts 1&2 ATLANTA, GA.

JANUARY 13, 1999
 NORTHEAST BROILER/FRYER PARTS - PART I FEDERAL-STATE
 Trucklot buying activity continued to slow and was almost at a standstill. Offerings were generally readily available and sellers often became willing negotiators. Movement through major retail and distributive channels was disappointing with

traders cautious as they looked ahead. The market tone was steady at best.

PRICES PAID PER POUND, ICE PACKED AND CO2 PACKED BROILER/FRYER PARTS, DELIVERED TO FIRST RECEIVERS IN POOL TRUCKLOT AND TRUCKLOT QUANTITIES.

ITEM CURRENT NEGOTIATED TRADING*
 BREAST - B/S 155 BREAST - WITH RIBS 70-71 BREAST - LINE RUN 70 LEGS 23-24 LEG QUARTERS (BULK) 15-16 DRUMSTICKS 32-33 THIGHS 23-24 WINGS (WHOLE) 90-91 BACKS AND NECKS (STRIPPED) 12-14 LIVERS (5 POUND TUBS) 40-45 GIZARDS (HEARTS) 45-50
 INCLUDES NEW YORK CITY METROPOLITAN AREA, NORTHERN NEW JERSEY, MASSACHUSETTS, CONNECTICUT, RHODE ISLAND, AND PENNSYLVANIA (NORTHEAST OF HARRISBURG). * TODAY'S NEGOTIATED SALES AS OF 11:30 A.M.

North Atlantic Shell Eggs

January 14
 Atlanta, Ga.
 IN BOSTON, PRICES WERE UNCHANGED TO THREE CENTS HIGHER. IN PHILADELPHIA, PRICES WERE UNCHANGED TO FOUR CENTS HIGHER. IN NEW ENGLAND, EXTRA LARGE, LARGE, AND MEDIUM

PRICES WERE FOUR CENTS HIGHER. ALL OTHER PRICES WERE UNCHANGED. THE MARKET TONE WAS FIRM. DEMAND WAS MODERATE TO VERY GOOD. SUPPLIES WERE TIGHT TO ABOUT ADEQUATE. BREAKING STOCK SUPPLIES WERE ADEQUATE FOR THE LIGHT DEMAND.

PHILADELPHIA: PRICES TO RETAILERS, SALES TO VOLUME BUYERS, USDA GRADE A AND GRADE A, WHITE EGGS IN CARTONS, DELIVER STORE DOOR, CENTS PER DOZEN:
 RANGE: EXTRA LARGE, .735-.86, LARGE .715-.84, MEDIUM .53-.69.

Friend's Stockyard Inc.

Accident, Md. 21520
 Report Supplied by Auction
 January 11
 STOCK BULLS AND STEERS (200-500 LBS.) 50.00-68.00.
 STOCK HEIFERS: 36.00-58.00.
 SLAUGHTER STEERS: GOOD TO CHOICE 55.00-63.85; MEDIUM TO GOOD 47.00-54.50, HEAVY CHOICE OVER 1450 LB. 50.00-55.00.
 HOLSTEIN STEERS: HEAVY CHOICE 36.00-49.50, LIGHT 35.00-41.50.
 SLAUGHTER HEIFERS: GOOD TO CHOICE 55.00-62.25; MEDIUM TO GOOD 45.00-54.50.
 BULLS: HEAVY 37.00-48.50, LIGHT 35.00-43.50.
 COWS: UTILITY (HOLSTEIN) 33.00-39.00, COMMERCIAL TO GOOD 28.00-32.50, CULL COWS 28.00 AND DOWN.
 VEALS: GOOD TO CHOICE 50.00-68.00, MEDIUM TO GOOD 20.00-47.00.
 BOB CALVES: 28.00 AND DOWN.
 HOLSTEIN BULL CALVES - RETURN TO FARM (90 TO 120 LB.)-UP TO 96.00.

HOLSTEIN HEIFER CALVES - RETURN TO FARM (90 TO 120 LB.)-UP TO 165.00.

BEEF CROSS CALVES - RETURN TO FARM UP TO 60.00.

HOGS: TOP QUALITY UP TO 31.50; HEAVY UP TO 30.00; LIGHT UP TO 27.00.

SOWS: 10.00-18.75.
 LAMBS, LIGHT AND FEEDER LAMBS, NONE AVAILABLE.
 SHEEP: NONE AVAILABLE.
 SALE LIGHT DUE TO INCLEMENT WEATHER.

New Holland Dairy

New Holland Sales Stables
 Wednesday, January 13, 1999
 Report Supplied by Auction
 91 DAIRY COWS, 151 HEIFERS, 8 BULLS. MARKET STRONGER.
 LOCAL FRESH COWS 510.00-1275.00.
 FRESH HEIFERS 1000.00-1400.00; FEW 1500.00-1600.00.
 LOCAL SPRINGERS 475.00-1085.00.
 UPSTATE LOADS FRESH 1050.00-1550.00.
 BETTER FRESH COWS 1500.00-1600.00.
 SPRINGING HEIFERS LARGE 1125.00 - 1425.00, SMALL 885.00-1085.00.
 SHORT BRED HEIFERS 735.00-1000.00.
 REGISTERED HEIFERS 1250.00-1425.00.
 OPEN BREEDING AGE HEIFERS 710.00-810.00.
 SMALL OPEN HEIFERS 335.00-635.00.
 BULLS 235.00-685.00, PUREBREDS 635.00-775.00.

NY Phil

Frozen Eggs ATLANTA, GA. JANUARY 08, 1999

EASTERN REGION FROZEN EGGS, JANUARY 08, 1999. FEDERAL-STATE
 All prices were unchanged to lower. The market tone was barely steady. Demand was mostly light to moderate. Supplies

Forney Longenecker
 First Vice President
 Commodities Only
 717-295-8914
 800-441-1997

SALOMON SMITH BARNEY

A Member of TravelersGroup

150 N. Queen Street, Suite 100
 Lancaster, PA 17603

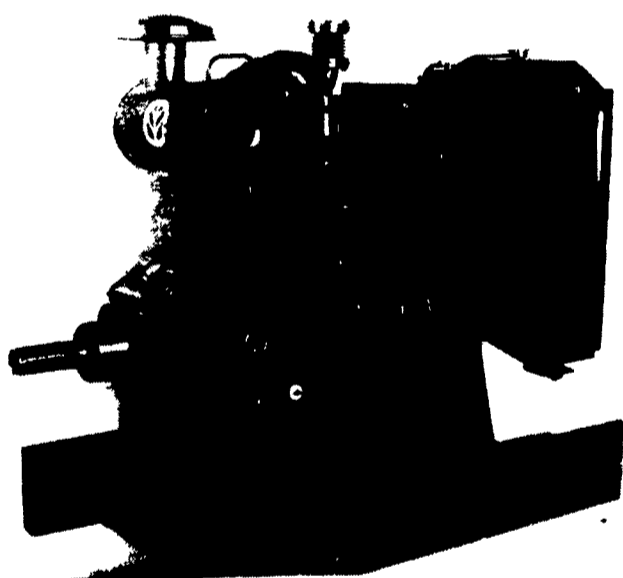
CONESTOGA VALLEY ENTERPRISES

HI-MAG Agricultural Lime Spreading HI-CAL



Cash Discount Savings on Delivery
 Call Toll Free day and evening
 1-800-724-3277
 Serving PA, MD, Delmarva, NJ, NY & (LI)

Proven pumping power that won't pump your wallet dry



If you think high power means high price in stationary engines, it's now time to think again.

7000 and 8000 Series Stationary Engines for irrigation

These new power units beat the competition with:

- More horsepower at a lower speed.
- Better fuel economy.
- Rugged, cast iron cylinder heads and block.
- Easy-to-reach, single-side service points
- Renewable cylinder liners.
- Lower price, too!

Come see the engines that are proving they can pump your well without pumping your wallet dry



MESSICK'S



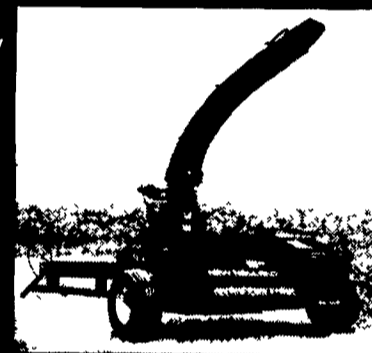
OPEN HOUSE AT OUR TWO LOCATIONS NEW HOLLAND

RD #1 Box 225A,
 Route 30
 Abbottstown, PA 17301
 717-258-6617
 JAN. 18 - JAN. 23

Rheams Exit - Route 283
 Elizabethtown, PA
 717-367-1319
 717-653-8867
 JAN. 25 - JAN. 30

Now! Process Silage with your New Holland Harvester Increase Profits & Reduce Feed Waste

with the new Georgetown Kernel Processor Conversion Kit



- Adjustable 8 1/2" x 22" hardened steel rolls which turn at different speeds, more thoroughly breaking kernels
- Remove floor pan to make haylage with the same unit.

New for 199 kits for self propelled units!

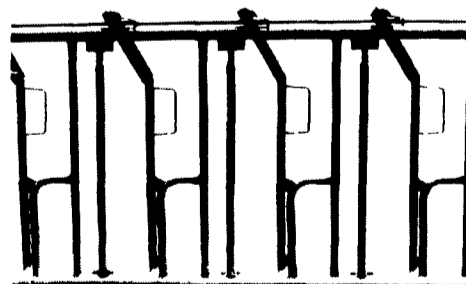
Georgetown Manufacturing Co.

343 Christiana Pike, Christiana, PA 17509 • 610/593-2753
 Call Today for More Information

Paul B. Zimmerman INC.

Heavy Duty Headlocks

Finished with TGIC Polyester Powder Coating . Superior to Epoxy!



- 3 Sizes Available To Meet Your Cattle Handling Needs
- CA Series: 7 locks per 10'
 - HE Series: 6 locks per 10'
 - CO Series: 4 or 5 locks per 10'

- Extra Heavy Construction
- yokes lock on individual catches
- Yoke stabilizer on large sizes
- Designed for easy entry & exit
- Removable neck bar



LAPP'S BARN EQUIPMENT

5935 OLD PHILADELPHIA PIKE, GAP, PA 17527
 PHONE: 717-442-8134 • FAX 717-442-3112
 SALES & SERVICE

Call or write for free catalog.