

Super Rugged ♦ Commercial Grade

WHY CURTIS?

FEATURE 7 (OPTIONAL)
GRILL MOUNTED REMOTE LIFT SWITCH
Allows operation of lift cylinder from front of truck to assist in plow installation

FEATURE 1

HIDE AWAY HYDRAULICS

Our hydraulic cavity tucks away our power system. No belts and pulleys under the hood and no ugly box on the front of your truck. A 1/4" skid plate and gasketed top cover are also standard features. This system allows superior airflow to radiator and provides instant down pressure with added weight on the cutting edge.

FEATURE 4
FORMED CROSS MEMBERS
give an exclusive stability unseen in other plows

FEATURE 6

PLATE STEEL A FRAME

This laser cut frame system joins 3 main members for a raw strength unequalled by the competitor's single iron frames

FEATURE 3

FOUR PIN PIVOT FRAME

Spreads weight evenly across frame and adds support to lower section of plow

FEATURE 5

ATTACK ANGLE

Our modern designed moldboard features an 18° contact angle for a superior glide trip in most snow conditions

EXTENDED PUSH FRAME (E)

Clearly the widest push frame on the market. ADVANTAGE superior distribution of force through the plow system and not the vehicle frame

Compared to the rest...

Curtis Feature #	Description	Fisher	Meyer	Western	Boss	Snowway
1	Hide away Hydraulics					
2	Extended Push Frame					
3	Four Pin Pivot Frame					
4	Formed Cross Members					
5	Attack Angle					
6	Plate Steel A Frame					
7	Grill Mounted Lift Switch Option					

NO!

This Plow Can Be Purchased @ the Following Locations:

PRECISION CARS, INC.

19914 Leitersburg Pike
Hagerstown, MD 21742
(301) 739-6640

GINDER'S GARAGE

2327 S. Market St.
Elizabethtown, PA 17022
(717) 367-8067

DREXEL AUTO SUPPLY

333 Steinman Farm Rd.
Pequea, PA 17565
(717) 284-2916

BRUCE WITTE, INC.

6417 Davis Rd.
Mt. Airy, MD 21771
(301) 829-0271

ROCK SPRINGS HARDWARE

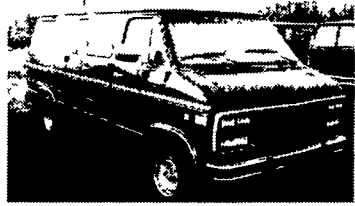
1320 Rock Springs Rd., Rising Sun, MD 21911
(410) 658-5978 (800) 858-0288
OPEN 7 DAYS A WEEK



1997 Ford E350 Clubwagon Chateau, 7 Pass, 6.8 Triton V10, Auto OD, Dual Air/Heat, Privacy Glass, Tilt, Cruise, PW, PL, Quad Captain, Tow Package, Limited Slip, 35K Mi., #2853



1988 Ford E350 Super Clubwagon XLT, 15 Pass, 6.8 Triton V10, Auto O/D, Dual A/C Heat, Privacy Glass, Tilt, Cruise, PW, PL, 24-27K Mi



1995 GMC G2500 Rally STX, 8 Pass, V8, Auto O/D, Dual A/C, Privacy Glass, Tilt, Cruise, PW, PL, Hinged Doors, 67K, #2866



1996 Ford E150 Clubwagon XLT, 8 Pass, 351 EFI, Auto O/D, Dual A/C Heat, Privacy Glass, Tilt, Cruise, PW, PL, 54K, #2852



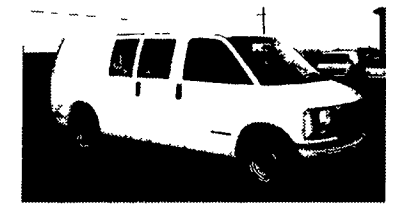
1997 Ford E150 Clubwagon Chateau, 7 Pass, 5.4 Triton V8, dual A/C heat, tilt, cruise, PW, PL, Pwr Seat, Quad Captains, Tow Package, 32K Mi., #2822, (Red)



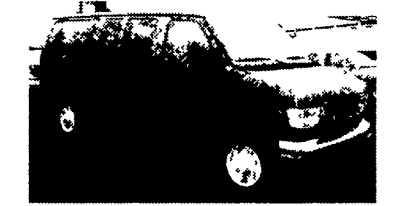
(5 Avail) 1995-1997 Ford E150 Clubwagon XLT 8 Passengers, Small and Large, V8 Auto O/D Dual A/C and Heat, Privacy Glass, Tilt, Cruise, PW, PL, 9000 to 60,000 Miles Call For Details!!!



1997 Ford E350 Econoline, 7.3 powerstroke dsl, Auto, OD, A/C, PW, PL, Tilt, Cruise, 9500GVWR, Tow Package, 44K mi., #2851, (purple)



1997 GMC G2500 Savanna 5700 Vortec, Auto, OD, 8600 GVWR, A/C Tilt, Cruise, 40K Mi., #2840, (white)



1998 Ford E350 Clubwagon XLT, 12 Pass, 5.4 Triton V8, Auto O/D, Dual A/C Heat, Privacy Glass, Tilt, Cruise, PW, PL, 29K, #2789

Specializing In Vans
30/40/45/55
Four Way
Auto Sales

770 W. Main New Holland, PA 17557
717-354-3199 • 717-355-0625 FAX
Toll Free 1-877-999-VANS (8267)
Many Other Vans In Stock

PRE-OWNED CARS

'98 FORD TAURUS SE SDN
A/C, A/OD, AM/FM Cass,
"3" To Choose From

'97 LINCOLN TOWN CAR SIGN.
A/C, A/OD, AM/FM Cass,
"Fully Loaded - A Must See"

'96 FORD CONTOUR SPORT SDN
A/C, 5 SPD, AM/FM Cass,
"Super Clean - Neat!!"

'95 FORD THUNDERBIRD LX
A/C, A/OD, AM/FM Cass,
"Very Nice"

'96 LINCOLN CONTINENTAL
A/C, A/OD, AM/FM Cass,
"2 to Choose From"

'96 LINCOLN MARK VIII
A/C, A/OD, AM/FM Cass,
"Fully Loaded"

'98 MERCURY GRAND MARQUIS GS
A/C, A/OD, AM/FM Cass
"Super Clean"

'95 MERCURY SABLE GS SND
A/OD, AM/FM Cass,
"Very Clean"

PRE-OWNED TRUCKS

'93 CHEVROLET 3500 DUMP TRUCK
12' Grain, Auto, AM/FM,
"Ready For Work"

'93 CHEVROLET S-10 S/CAB
A/C, 5 Spd, AM/FM Cass
"A Good Truck"

'96 DODGE DAKOTA S/CAB SLT
4x4, AM/FM Cass,
"Super Nice Truck"

'97 FORD F-150 4x4 FLARESIDE
A/C, 5 Spd, AM/FM Cass,
"Beautiful Truck"

'97 FORD F-350 4x4 XL
A/OD, 8 Cyl,
"Must See"

'96 FORD RANGER S/CAB XLT
4x4, A/OD, AM/FM Cass,
"Low Miles"

'92 FORD F-150 XLT 4x4
A/C, A/OD, AM/FM, PW, PL
"One Owner"

'93 FORD RANGER XLT
5 Spd, AM/FM Cass, A/C,
"Stop in to See"

PRE-OWNED MPV'S

'97 FORD EXPLORER SPORT
A/C, A/OD, 4x4, AM/FM Cass
"Low Miles - Very Nice"

'97 FORD EXPEDITION XLT 4x4
A/OD, A/C, AM/FM Cass
"Very Low Miles"

'96 FORD WINDSTAR GL
A/OD, A/C, AM/FM Cass,
"Super Nice Van - Ready to Go"

'97 JEEP WRANGLER SPORT
5 Spd, AM/FM Cass, Soft Top,
"Ready for Winter"

'95 JEEP GR. CHEROKEE LIMITED
A/C, 6 Cyl, A/OD,
"Extremely Clean"

'94 CHEVROLET BLAZER S-10 4x4
A/OD, AM/FM Cass,
"Super Low Miles - WOW!"

'95 FORD BRONCO EB 4x4
A/OD, A/C, AM/FM Cass,
"Very Clean - NICE!"

'95 GEO TRACKER 4x4 LSI
A/C, Auto, Sport Top,
"Low Miles - Very Sporty"

ENGLE-RISSINGER AUTO GROUP

Midway Between Halifax And Millersburg • 717-896-3421 • 1-800-242-8075

HOURS: Monday-Friday 8:30 AM - 8:30 PM; Saturday 8:30 AM - 3:00 PM

FORD FORD FORD FORD FORD FORD FORD

KELLER BROS.

(Buffalo Springs) Lebanon, PA

717-949-2000 or 1-800-363-2767

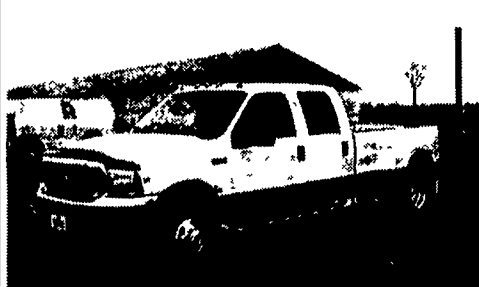
LEBANON COUNTY'S HEAVY DUTY TRUCK HQTRS.

1998 CHEV K1500 EXT. CAB

4x4 Silverado, 5.7 Vortec V8, Loaded



1997 FORD F150 SUPER CAB 4x4
XLT, 5.4 V8, AT, A/C, PW, PL



1989 FORD BRONCO II
XLT, 4x4 Local Trade



1993 FORD RANGER XLT
Super Cab 4x4, Low Miles, Local Trade
SPECIAL \$11,995



1999 F250s, 350s, XLs, XLTs & Lariats. Single Axles & Duallys, 4x4's Gas or Turbo Diesels
OVER 20 IN STOCK
Lebanon County's Heavy Duty Truck Headquarters

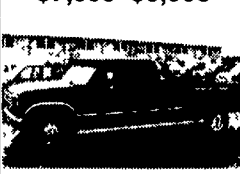
1995 CHEV TAHOE LT
Leather, 28,000 Miles, Green
\$23,900 \$AVE \$\$



1989 GMC 3500 CHASSIS CAB
One Owner, Just Traded



1984 FORD F250 SUPERCAB
Dually, Diesel, AT, \$7,995 \$6,995



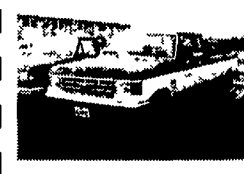
1996 FORD F250
Super Cab, H.D., 4x4, Auto., XLT



1995 FORD WINDSTAR GL
Loaded, Green, Holiday Special
\$11,950 \$10,995



1987 FORD F250 SUPER CAB 4x4
XLT, AT, V8, Just Traded



1997 FORD F250 4x4 DIESEL
5-Speed, XLT, 19,000 Miles, Like New



1991 FORD EXPLORER 4x4
XLT Trim, AT, Loaded, Red
\$8,450



1995 JEEP CHEROKEE SPORT
4x4, 4 Door, 4.0 6 Cyl., AT, A/C



1994 FORD F150 SUPERCAB 4x4
XLT, V8, AT, A/C, PW, PL, Short Box



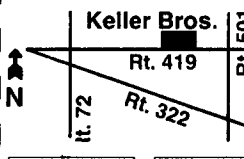
1993 JEEP GRAND CHEROKEE LAREDO
4x4, Loaded



1995 FORD F250 SUPER CAB 4x4
XLT, Diesel, Low Miles



1991 DODGE RAM VAN
8 Passenger, Local Trade
\$6,950



KELLER BROS. FORD HAS SERVED CENTRAL PENNA. AREA FOR MORE THAN 75 YEARS.

FORD FORD FORD FORD FORD FORD FORD