

35 TRUCKS & TRAILERS

FOR SALE

18'x6'3" Eby Cattle Body

Excellent Condition, New Rear, Padded, Drop & Roll Doors, Side Roll Door, Side Calf Door, Chute Sides, New Rear Light Bar

\$6,000 OBO

Can Be Seen At M H. Eby, Blue Ball, PA



High Flotation GMC Big Wheel, 66x43x25 Rear Tires, 48x25x20 Front Tires, 1600 Gal. SS Self-Loading Tank, 6" Load, 4" Unload, 6V53 Diesel, 5 Speed Allison, 2 Speed Rear, Only 28,000 Original Miles, New Inspection, Good Condition, Spread After 4" Rain with No Ruts. \$14,900 OBO.

717-776-3108



1988 FORD LITEFOOT SPRAYER

460 Gas, Auto, New A/C, 650 Gal. S.S Tank, 45' Booms, 20" & 60" Nozzle Spading, All Hydraulic, 440 Raven Controller, Foam Marker, Fresh Water Tanks, Pressure Washer

ASKING \$9,000

PLEASE CALL 914-651-5303



Hiab 260 10 Ton Crane

27' Knuckle Boom, Hatz Diesel, Rolling Base. With 1989 45' Dorsey Trailer

\$29,500 (717) 355-2361

25 Ton Eager Beaver

Small Enough To Pull Behind Your Dump Truck, Big Enough To Haul Your Medium Size Excavator, Only 8 Degree Loading Angle

See Binkley & Hurst Bros. Inc. Today



25XPT EASY LOADER:

25 Ton Capacity Tri-Axle, 8° Degree Loading Angle

- CAPACITY: 50,000 Lbs.
- Overall Width: 102", Length: 34'4"
- Deck Length: 22' Flat, 6' Beavertail
- Trailer Weight: 11,200 Lbs.
- Deck Height: 34"
- Ramps: 72" Long x 21 1/4" Wide

Optional Aluminum Extension Ramps

Call 1-800-414-4705 717-626-4705

Ask For Dean

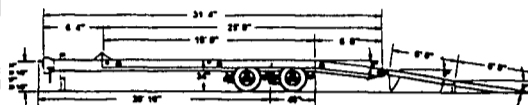
See Us For 35 and 50 Ton Detachable Spring or Air Ride Trailers

Good Financing Available With Credit Approval



Model 20XPT EASY LOADER

- Capacity 40,000 lbs
- Trailer Weight 8,400 lbs.
- Overall Width 102", Length 31'4"
- Deck Width 102", Length 25', Height 34" (Optional 96" Width)
- Ramps 72" Long x 21-1/4" Wide Range 102" Max 23" Min
- Tires Eight 215/75R17 5 (H)



EASY LOADER

Low 8 Degree Loading Angle Fits Most Job Applications

- Pavers • Dozers • Rollers • Excavators
- Loader Backhoes

NEW Eager Beaver TRAILERS

BINKLEY-HURST BROS. INC.



133 Rothsville Station Rd. P.O. Box 0395, Lititz, PA 17543-0395 (717) 626-4705 1-800-414-4705 Fax (717) 626-0996

RIVER'S TRUCK CENTER

ROUTE 24 - CAPE HORN RD RED LION, PA 17356 (717) 244-4903

Now Providers of New Western Star Trucks, Slots Available



1999 WESTERN STAR 4964FX, Tri-Axle, Cat 430, 8LL, 18,740 Front Axle, 46,000 Rears, Ready For Body Call Now



1995 MACK CH-613 E-7 @ 427, 9 Speed, Air Ride, 66" Single Bunk Sleeper, Low Miles, 1/2 Fenders, Loaded, Aluminum Wheels Call For Details



1999 WESTERN STAR 4964FX, 475 Cat, 10 Speed, 12 Front, 40 Rear, 200 Wheel Base, Jake Brake, Air Ride Call For More Details or To Order Yours Today



1991 FORD L9000 Single Axle, L10, 260 HP, 9 Speed, PS, Ac, Lease Maintained, Clean, \$11,900

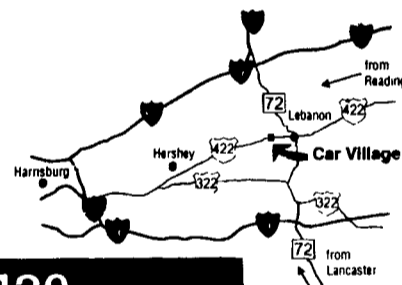
Business Hours: Mon.-Fri. 9 to 9; Sat. 9-4

RTE. 422 WEST LEBANON, PA

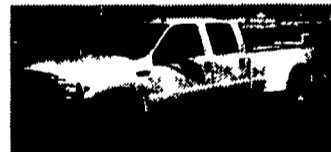
(Across From Lebanon Valley Mall)

CAR VILLAGE

HEAVY DUTY TRUCKS



PHONE 717-274-2000 Toll Free 1-800-650-1420



4x4 CREW CAB DUALLY 99 FORD 350 SUPER DUTY Rare & Hard To Find, 6 Sp, Manual Trans, Powerstroke Turbo Diesel, Trailer Tow Pkg, Aluminum Wheels, All Options, Loaded XLT



95 DODGE 2500 4X4 The Right Tr At The Right Price, Cummins Diesel, AT, A/C, Trailer Tow Pkg, Only \$5,900 Miles, Real Clean \$19,900



19,000 MILES 97 DODGE 2500 4X4 Heavy Duty 24 Ton Cummins Turbo Diesel, AT, A/C, Laramie 8LT, 4:10 Axle, Tow Pkg, Chrome Wheels, It's A Beauty



FLATBED - 96 CHEVY H.D. 3500 Heavy 15,000 GVW, High Output 6.5 Turbo Diesel, 5 Spd., Vinyl Seat & Floor, 8 FL Bed, Tow Pkg., New Tires - \$14,900



4x4 CREW CAB 97 FORD F350 XLT Plenty of Room & Plenty of Power, Powerstroke Diesel, AT, A/C, All Options, Limited Slip 4:10 Gear, Heavy Duty Trailer Pkg, A Must See



\$2,500 GOOSENECK TRAILER Dual Axle



6 WHEEL DRIVE 96 DODGE DUALLY This Is One Great Tow Machine. Cummins Diesel, 5 Spd., Big Swing Out Mirrors, Limited Slip Dana, 4:10 Rear, Only 17,000 Miles



MECHANIC TRUCK 96 FORD F350 Powerstroke Turbo Diesel, AT, A/C, Vinyl Floor Mat, Reading Box, Please Call For Details



VERY, VERY NICE 96 FORD F250 SUPER CAB 2 Wheel Drive, Diesel Power, Local 1 Owner, Banks Turbo Charger, AT, A/C, TIR, Cruise, Capt. Chairs, Console, Heavy 8000 GVW. You Must See And Drive



PERFECT 4 DOOR 4X4 97 FORD F350 XLT Awesome Tk, Powerstroke Turbo Diesel, AT, A/C, CD Player, 40/20/40 Seat Aluminum Wheels, Tow Pkg, 28,000 Miles



1 TON PICKUP - 97 FORD F350 4X4 Real Nice, Only 28,700 Miles, Powerstroke Turbo Diesel, 5 Spd., A/C, Solid Front Axle, 8,000 GVW, Vinyl Seat & Floor



HARD TO FIND 99 FORD F350 SUPER CAB DUALLY 4X4 A Real Pullin Machine, Powerstroke Turbo Diesel, AT, A/C, Limited Slip 4:10 Gear, 6 Way Pwr. Seat, Alum. Wheels



1 TON DIESEL 96 FORD F350 XLT Heavy Duty Solid Front Axle, Lock Out Hubs, Powerstroke Turbo Diesel, AT, A/C, Vinyl Floor Mat, 37,000 Miles



4x4 DIESEL SUPER CAB, 97 FORD F250 HEAVY DUTY Real Nice, 33,000 Miles, Powerstroke Turbo Diesel, AT, A/C, 40/20/40 Seat, Aluminum Wheels, Big Swing Out Tow Mirrors



4x4 DIESEL SUPER CAB 95 FORD F250 XLT A Good Looker Only 33,000 Miles, Powerstroke, Turbo, AT, A/C, Power Everything, Lock Out Hubs, Trailer Tow Pkg.



4x4 HEAVY DUTY SUPER CAB 94 FORD F250 XL Runs & Drives Very Nice, Very Solid Truck, 351 At, A/C, Lock Out Hubs, Vinyl Seat & Floor, Heavy 3/4 Ton, Great Tk. To Have Around The Farm \$13,900



DIESEL CARGO VAN 94 FORD E-350 Heavy 9400 GVW Diesel Power AT, A/C, Real Clean and Only 34,000 Miles, Side Doors



DIESEL POWER 82 CHEVY 3/4 TON Diesel, Auto, Great Tk. For Around The Farm



FARMERS FRIEND 93 FORD F250 SUPERCAB 4 WHEEL DRIVE 5 Spd. Trans., 7.3 Diesel, AC, Tow Pkg., Runs Great



4x4 SUPER CAB DUALLY 93 CHEVY K3500 SILVERADO Probably The Nicest Anywhere 35,000 Miles, High Output 6.5 Turbo Diesel, AT, A/C, Heavy Duty Tow Pkg



4x4 DUMP - 95 GMC K3500 A Real Workhorse, High Output, 6.5 Turbo Diesel, 5 Spd., A/C, 8 FL Body, Penttil Hitch, Only \$8,000 Miles



FARM CHASSIS 76 FORD F350 V8, Auto, 161 Wheel Base



4x4 GAS 95 FORD F250 XLT Heavy Duty 8500 GVW 3/4 Ton, 358 I.I. V8, Auto, A/C, Trailer Tow Pkg, Dual Tanks, Only \$1,000 Clean Miles



5 SP. DIESEL 4X4, 97 FORD F250 XLT SUPER CAB Hey, Don't Wait, These Are Hard To Find, Only 6,000 Like New Miles, Powerstroke Turbo Diesel



5 SP. 4X4 CLUB CAB DUALLY 97 & 98 Available, Cummins Diesel Call For Details