

# GOODYEAR

#1 in Tires

## FARM TIRES FOR EVERY FARM NEED!

**Duratorque-  
Bias Ply Rear Farm Tire**

13.6-28 6 Ply **\$199** | 14.9x28 6 Ply **\$259**

Other Sizes Available

- Excellent roadability provided by the overlapping lugs in the center
- Traction in a wide range of sizes due to the long bar design



- Long wear and durability from the braced lug design
- Easy lug cleanability

**DT710 Radial  
Goodyear's Smoothest  
Riding Rear Farm Tire**

184R34★  
**\$499<sup>00</sup>**

Other Sizes Available

- Minimum vibration and smooth ride provided by multi element tread
- Excellent traction from the increased lug count
- Unmatched traction performance in dry soil conditions

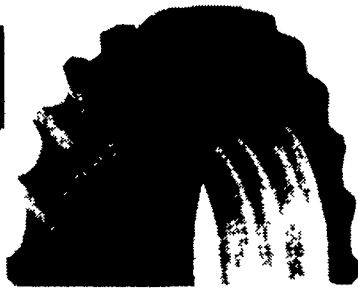


**Super Traction  
Radial**

16.9 R30  
**\$649<sup>00</sup>**

Other Sizes Available

- Self-cleaning tread action promoted by 45 degree tread lug angles
- Up to 25% deeper than conventional R-1 tires



**Dyna Torque  
Radial - Major  
Savings In Time  
And Fuel Costs**

184R38★  
**\$559<sup>00</sup>**

Other Sizes Available



- Reduced vibration in field and road service
- Improved traction from the 3 pitch tread design

**Dyna Torque II -  
Excellent  
Drawbar Pull For  
High Torque  
Tractors**

155-38 6 Ply  
**\$269<sup>95</sup>**

Other Sizes Available



- Reduced vibration in field from the long bar/short bar design
- Excellent roadability

**Triple Rib HD -  
Front Tractor  
Tire For Precise  
Steering  
Stability And  
Long Tire Life**

- Improved steering in loose, cultivated soil provided by the deep, wide center ribs
- 3 rib design provides excellent steering capabilities

550-16 4 Ply TT  
**\$43<sup>95</sup>**

Other Sizes Available



**Farm Utility**

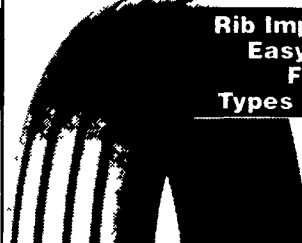


- Outstanding flotation
- Easy steering from the heavy grooved ribs

11L15 8 Ply TT  
**\$46<sup>95</sup>**

Other Sizes Available

**Rib Implement Tire -  
Easy Operation  
For Many  
Types of Equipment**



- Easy rolling resistance with the 5-rib design
- Designed for dependable on/off highway service

670x15 6 Ply TT  
**\$49<sup>95</sup>**

Other Sizes Available

**IT510  
RADIAL**



- Maximum traction supplied by additional biting edges from the overlapping lug/block pattern
- Flotation and traction provided by a larger contact patch

175 LR 24 8 Ply  
**\$549<sup>00</sup>**

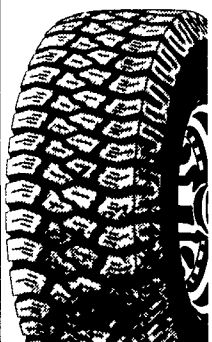
Other Sizes Available

**WORKHORSE  
XG RADIAL**

Economy All-Weather  
Radial for Light Trucks  
Heavy Duty On/Off Road  
P235 75R15

**\$75<sup>95</sup>**

OTHER SIZES AVAILABLE



**Industrial  
Sure  
Grip**



149x24 8 Ply  
**\$279<sup>00</sup>**

Other Sizes Available

- Reinforced lugs for industrial use
- Aggressive tread design

**Ultra  
Grip  
Lug**



- Premium skid steer tire
- For heavy duty applications

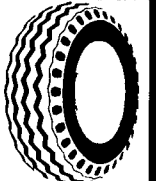
10-16.5 8 Ply  
**\$103<sup>00</sup>**

Other Sizes Available

**LABORER**  
Heavy Duty Industrial Tractor Front  
Wheels 11L-15 8 Ply

**\$89<sup>95</sup>**

OTHER SIZES AVAILABLE



**Industrial Tires  
IT525 Bias - Improved  
Traction And Handling**

175L-24 - 8 Ply

**\$269<sup>00</sup>**

Other Sizes Available



**Service Tire Truck  
Centers, Inc.**  
1201 S Cameron St  
Harrisburg, PA  
717-238-8473

**Bastian Tire Sales**  
Rt 11 & 15  
Shamokin Dam, PA  
1-800-326-9465

**Horlacher &  
Sherwood**  
153 E Tioga  
Tunkhannock, PA  
717-836-1116

**BHM Farm  
Equipment**  
RD 1 Rt 934 North  
Annville, PA  
717-867-2211

**Service Tire Truck  
Centers, Inc.**  
1601 Manheim Pike  
Lancaster, PA 17604  
717-569-8473

**Service Tire Truck  
Centers, Inc.**  
3403 Concord Road (PIE Building)  
York, PA 17402  
717-755-8473

**Bastian Tire Sales**  
R2603 Reach Road  
Williamsport, PA 17701  
1-800-362-5279

**Neatons Tire**  
25 East Ave  
Easton, MD  
1-800-317-6152

**Lebanon Valley  
Imp. Co.**  
700 E Linden St  
Richland, PA  
717-866-7518

**Dices Tire Shop**  
1421 Lincoln Way  
Chambersburg, PA  
717-264-9312

**Zimmerman Farm  
Service**  
School Rd  
Bethel, PA  
717-933-4114

**Donald B. Rice  
Tire Co.**  
909 East St  
Frederick, MD 21701  
1-800-950-0550

THE BEST TIRES IN THE WORLD HAVE **GOODYEAR** WRITTEN ALL OVER THEM