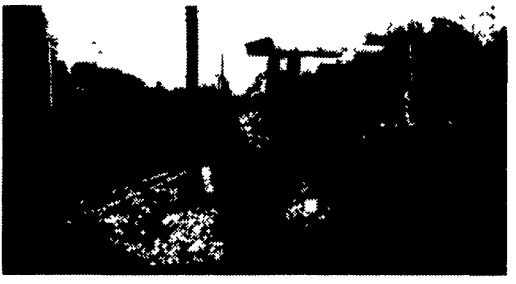


**1 FARM EQUIPMENT**

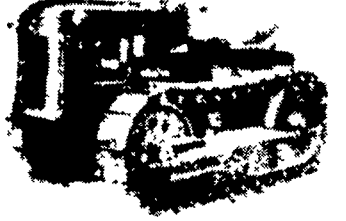
**Massey Ferguson Tractors & Wisconsin Engines Rebuilt For Sale**  
 THD & VF4D Wisconsin  
 6.354 Perkins with Clutch  
**GLICK'S ENGINES**  
 717-656-4842

Call: (570) 945-3451

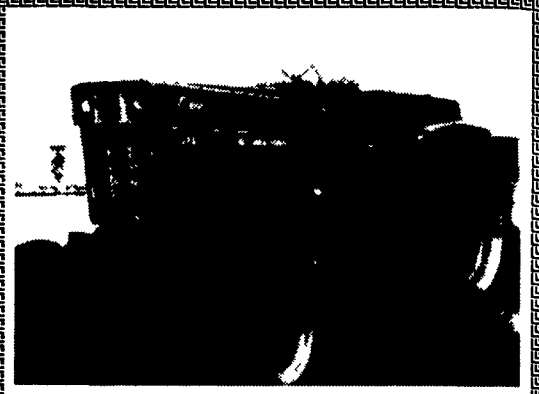


**1984 International Tractor - Model 584**  
 52 H. Power, 6 cyl Int diesel,  
 8' Hardee Brush Hog,  
 6' Triumph Hydraulic Sickle Bar,  
 new paint, roll-over canopy  
**\$9,500**

**OLIVER CRAWLER PARTS**  
 HG, OC-3, OC-4, OC-6 Our Specialty



**ZIMMERMAN OLIVER-CLETRAC**  
 1450 Diamond Station Road, Ephrata, PA 17522  
**717-738-2573**  
 We Ship UPS Daily  
 Monday To Friday 7 A.M.-5 P.M.  
 Evenings and Saturdays By Appointment



**IH 1088**  
 Turbo, Dual PTO  
**\$6,900**  
**(717) 532-8926**

**WINTER DISCOUNT SALE!!**  
**With Some Discounts As Much As 50% OFF**

**WINTER DISCOUNTS ON PRE-OWNED TILLAGE! SAVE \$\$\$ NOW AND BE READY FOR SPRING!**

- 1) **UM 3891** - 10% OFF Krause Model 2400 Rock Flex Wing Disk Harrow, 26 Foot Cut with Dual Wheels Center Section, Front Blades Measure Approx. 21" Diameter on 9" Spacing and Rear Blades Have 20" Diameter on 10-1/2" Spacing. Good Frame, Paint Poor. Was \$8,500 - **NOW \$7,650.**
- 2) **UM 3914** - Sunflower 21 Foot C-Flex Disk Harrow (12-1/2' Transport Width), Model 1232-21, New 22x1/4" Dia Blades and Bearings on Front Gangs, with Packer Hoses
- 3) **UM 3915** - 10% OFF Wilrich 3 Pt. Mounted Ripper with 3 Shanks, Spring Loaded Coulters and Depth Gauge Wheels. Was \$2,350 - **NOW \$2,115.**
- 4) **UM 3989** - Bush Hog 3 Pt Chisel Plow 7 Shank High Clearance with Gauge Wheels - **\$1,095.**
- 5) **UM 3993** - Glencoe II Shank Coulters Chisel - **\$4,250.**
- 6) **UM 4003** - Sunflower 24-1/2 Foot C-Flex Wing Disk Harrow with Narrow Transport with Packer Hitch & Hoses, Frame & Paint Very Good Condition.
- 7) **UM 3982** - Sunflower 6331-25 Hand Finisher, 25 Foot Working Width and 12'4" Transport - **\$10,300.**
- 8) **UM 4022** - Krause 18 Foot S-Tine Field Cultivator Model 4200 Series, Walking Tandem, 3 Row Coil Tines, Packer Hitch in Good Condition - **\$9,250.**
- 9) **UM 3944** - 23 Foot Brillion x Fold Packer.
- 10) **UM 4032** - Sunflower 13 Foot Disk Harrow C-Flex Hangers Dual Tires - **\$7,800.**
- 11) **NE 5499** - Deep Till 30" Spacing Sub Soil Automatic Reset with Coulters Unverferth Zone Builder 4 Shank - **Special \$5,900 - New Demonstrator.**

**Save Save Save On Used Blower!**  
**Check Out Our Selection of Pre-Owned Blowers**



- 1) **UM 3700** - Gehl High Capacity 1000 RPM Model 1580 Blower, Was \$2,857 - **NOW \$1,995**
- 2) **UM 3889** - Case IH Model 600, V. Good Cond., Was \$2,800 - **NOW \$2,520**
- 3) **UM 3635** - Gehl 1540 Blower, 540 PTO, with Water Attachment, Nice, Was ~~\$1,375~~ - **Reduced to \$1,031**
- 4) **UM 3969** - Gehl 1540 Twin Spinner In Very Good Condition - **\$1,950**
- 5) **UM 3981** - IH 600 Blower, Good Band, 540 PTO - **\$2,750**

**WINTER SAVINGS ON MISCELLANEOUS ATTACHMENTS AND MOWERS, HAY & FORAGE EQUIPMENT, MANURE HANDLING**

- 1) Set of 6-Bolt Solid Rubber Tire & Rim Assemblies to Fit Case Unloaders. **Ask For Allen In Parts - \$1,380.**
- 2) **NE 0788** - New Unverferth T Rail Duals with Snap On Hardware with 14"x38" Rims. **Now \$595 less \$100 - You Pay Only \$495.**
- 3) **NE 4493** - New Shurco Truck Tarp System for 18' Truck Body. Was \$2,300 - **NOW \$1,950** Plus Installation.
- 4) **UM 3146** - 15% OFF 93" Wide Quick Attach Material Bucket to Fit All Quickie Alo Loaders. Was \$800 - **NOW \$680.**
- 5) **NE 4403** - New 60" ATI Material Bucket for Gehl SL 3825 Skid Loader. **Discounted Price \$499.**
- 6) **NE 3362** - Rhino Model R900 8 Foot 3 Pt. Blade, 95 HP Rating Heavy Duty (New) - **SPECIAL \$1,495.**
- 7) **NE 4699** - New Agro Trend 9' 3 Pt. Heavy Duty Snow Blower, Double Auger, 540 PTO - **\$3,650.**
- 8) **UM 3330** - Kelley Foot 3 Pt. Rotary Mower. Was \$425 **NOW \$385.**
- 9) **UM 4009** - Speed King 36 Foot Transport Elevator in Good Condition - **\$1,575 OBO.**
- 10) **UM 4025** - Degelman Tractor Front Mount Dozer Blade, 10 Foot, Like New with Mountings for John Deere 4450 Tractor, Rugged Enough for Farm Dozer Work - **\$4,950.**
- 11) **UM 4023** - New Idea Model 5209 Pull Type 9 Foot Disc Mower Conditioner, Local One Owner in V. Good Cond. - **\$7,950.**
- 12) **NE 5111** - 4475 New AG Wrap Bale Wrapper 5x5 Bale Size, 3 Pt. Hitch. Was \$6,957 - **NOW \$6,500.**
- 13) **NE 4389** - New Gehl TR330 3-Row Corn Head with New Warranty, Factory List Price Over \$9,067. **Discount Sale Price - \$6,800.**
- 14) **UM 3798** - 25% OFF Case IH Model 8360 12 Foot Hydraulic Swing Center Pivot Mower Conditioner with Long Lasting Titor Rubber Crmping Rolls. Originally Was \$6,900 - **NOW \$5,175.**
- 15) **UM 3965** - Gehl MS 325 Tandem Axle Web Spreader with Hyd. Engate, Poly Floor and Galvanized Sides.
- 16) **UM 3923** - Gehl 2-Row Narrow Corn Head, TR 3038 - **\$1,950.**
- 17) **UM 3955** - New Idea 3632 Tandem Axle Web Spreader with End Gate, Approx. 300 Bushel - **\$3,650.**
- 18) **NE 2762** - "New" JF Rotary Rake. **SAVE \$1,800** - 3 Pt. Mounted with Flating Suspension on Gauge Wheels, Raking Width 11'2" and Transport at 5'8" Width. Was \$3,758 - **NOW \$1,985.**
- 19) **UM 3970** - John Deere 820, 9 Foot Pull Type Mower Conditioner with Stub Guards, Mowed 400 Acres, Like New, Was \$8,950.
- 20) Meyer Model 360 Equilizer Drill, Rear Unload, 2 Spinner - **\$1,500.**
- 21) Deutz Allis 4-Star Tedder, Pull Type PTO Driven - **\$2,150.**
- 22) **UM 3937** - IH 5100 Soybean Special Drill 20x6 Press Wheels.
- 23) **UM 4006** - Kuhn Model 381 Rake - **\$1,875.**

**NOW IN PURCHASE**  
**OWNED PLANTERS & DRILLS**

- 1) **UM 3748** - John Deere 4-Row 30" Planter with Dry Fert., Markers & Monitor, Insecticide, Rubber V Closing Wheels. Was \$6,500 - **Ask For Merv!**
- 2) **UM 3722** - Monosem Specialty Vacuum Planter 6-Row NGT Pull Type Transport with Cross Fill Dry Fert. Auger, Trash Disc., Like New. Was \$15,900. **Ask For Merv!**
- 3) **UM 3708 and UM 3634** - 40% OFF on (2) Similar Planters IH 800 6-Row x 30 with Fert. **Come & See!** Was \$3,750 - **NOW \$2,250.**
- 4) **UM 3687** - John Deere 4-Row x 30 7000 Planter with Liquid Fertilizer Reconditioned - **\$4,900.**
- 5) **UM 3800** - John Deere 7000 Planter 6 Row 30" with Liquid Fertilizer & Squeeze Pump and Markers, Reconditioned Price Was \$8,900. **Ask Merv For Discount Price!**
- 6) **UM 3962** - John Deere 7000 4-Row Conservation Planter with Liquid Fertilizer.
- 7) **UM 3877** - Kinze Model 2300 12 Row Swing Frame for Narrow Transport with Interplant Units. **Ask Merv for a Discount Price on this Late Model 12-Row Planter!**
- 8) **NE 4823** - New Air Power Seed Jet II Seed Transfer to Fill Planters & Drills from Bulk Containers to Eliminate all the Back Breaking Bag Handling. Was \$4,800. **ONE ONLY! \$3,250.**
- 9) **UM 3344** - 50% OFF White 4 Row Planter. Ws \$3,500 - **NOW \$1,750.**
- 10) **UM 3605** - 40% OFF On a Case IH Minimum Till Grain Drill, 26x7 with Press Wheels. Was \$5,850 - **NOW \$3,500.**
- 11) **UM 3913** - Kinze 6 Row x 30 Model 2000 Planter.
- 12) **UM 3907** - 20% OFF IH 5100 18x7 Grain Drill with Double Disc Openers and Press Bands and Grass Seeder. Was \$4,800 - **NOW \$3,840.**
- 13) **UM 3893** - IH 8-Row x 30" Spacing End Transport Folding Type Corn & Bean Planter with Fertilizer, Markers, Insecticide with Lock & Load Attachment, Good Paint, Nice. Was \$4,900 - **Ask Merv For Discount Price!**
- 14) **UM 3645** - John Deere 4 Row 30" Spacing Model 7000 Conservation Planter with Monitor, Double Disc Openers, Dry Fert., Insecticide, Reconditioned - **\$6,200.**
- 15) **UM 3694** - John Deere 7000 4-Row Planter with Liquid Fert., Loaded with Lots of Nice Add-Ons - **\$6,950.**
- 16) **UM 3933** - 40% OFF Krause 24x7-1/2 Grain Drill Model 5215 with Press Wheels and Double Disc Openers. Was \$4,500 - **NOW \$2,700.**
- 17) **UM 3721** - Pull Type Monosem 6-Row NGT Planter with Double Disc Openers and Dry Fert., Vertical & Cross Fill Augers.
- 18) **UM 3939** - John Deere 6-Row x 30 Maxi-merge Planter with Dry Fert., Insecticide, Markers, Rubber Closing Wheels, Very Good.
- 19) **UM 3985** - John Deere 7000 12 Row x 30 Planter with Liquid Fert., Piston Pump, Rubber V Closing Wheels, Markers, with Donahue Transport Trailer, **Don't Miss This One! Only \$6,950.**
- 20) **UM 3938** - Kinze Built New Idea 6-Row x 30 Planter with Cross Fill Dry Fert. Auger, Double Disc Openers.
- 21) **UM 3996** - Kinze Built New Idea 4-Row Planter (Loaded with Good Options) **\$6,500.**
- 22) **UM 3937** - Case IH 5100 Soybean Special Grain Drill, 20x6 with Double Disc Openers & Press Wheels, Lift Cyl., Rear Mount Grass Seeder, Good Paint, Nice - **\$5,150 OBO.**

**Ask About Our Good Financing Plans with Quick Approvals Tailored To Your Need! Now Is The Time To Make Your Move and Be Ready For Spring!**

**NOTICE: Ask About Our Quick, Easy, Competitive Finance Plans. Make Your Purchase Today And Save \$\$\$!!**

**BINKLEY & HURST BROS., INC.**  
 133 Rothsville Station Rd.  
 P.O. Box 0395, Lititz, PA 17543-0395  
 Located 1/2 Mile North of Rothsville

**(717) 626-4705**

1-800-414-4705  
 Fax 717-626-0996

