

Phila. Herb

PHILADELPHIA Terminal
Prices as of 05-JAN-99

Provided by: Fruit and Vegetable Market News, Federal-State Market News Service, USDA.

Phone: (215) 597-4536 Fax: (215) 336-0355

Clear 17-32 NA—FV055
MISC HERBS ---ANISE: 2/3 ctns CA 24s 14.00 ---ARRUGULA: 4/5 bucrts behd FL 24s 12.00-14.00 ctns behd TX 24s 14.00 ---BASIL: 1 kg ctns IS 12s 13.00 crts behd FL 15s 10.00 ctns behd FL 15s 10.00 few 8.00-9.00 ---CELERIAC (CELERY ROOT): 20 lb crts lse CD 9.00 ---CHIVES: 1 kg ctns behd IS 18.00 ---CILANTRO: crts behd FL 30s few 12.00 ctns lse FL 9.00-11.00 mostly 10.00 ctns behd AZ 60s 11.00 12.00 CA 30s 7.00-8.00 TX 30s 10.00 ---DILL: ctns behd AZ 24s 9.00 TX 24s 10.00-12.00 mostly 12.00 crts behd FL 24s 12.00-13.00 ---DRY ESCHALLOT: OFFERINGS INSUFFICIENT TO QUOTE ---HORSERADISH: OFFERINGS INSUFFICIENT TO QUOTE ---MARJORAM: 1 kg ctns behd IS 12s 13.00 ---MINT: crts behd FL 12s few 8.00-12.00 1 kg ctns behd IS 12s 10.00 ---OREGANO: 1 kg ctns behd IS 12s 13.00 ---ROSEMARY: 1 kg ctns behd IS 12s 13.00 ---SAGE: 1 kg ctns behd IS 12s 13.00 ---TARRAGON: 1 kg ctns behd IS 12s 17.00 ---THYME: 1 kg ctns behd IS 12s 13.00

Phil. Potato

PHILADELPHIA Terminal
Prices as of 05-JAN-99

Provided by: Fruit and Vegetable Market News, Federal-State Market News Service, USDA.

Phone: (215) 597-4536 Fax: (215) 336-0355

Clear 17-32 NA—FV030
ONIONS AND POTATOES --- ONIONS DRY: MARKET STEADY US#1 OR GENERALLY GOOD QUAL AND COND UNLESS OTHERWISE STATED. Yellow Globe Type NY 50 lb sks jbo 10.00-12.00 mostly 11.00-11.50 few 9.00 med 8.00-10.00 mostly 8.00-9.00 Span ish Hybrid CO 50 lb sks jbo 13.50-14.00 ID/OR 50 lb sks jbo 13.00-14.00 mostly 14.00 NV 50 lb sks jbo 14.50 UT 50 lb sks jbo 14.00 Red NY 25 lb sks jbo 8.00-10.00 mostly 9.00 med 7.00 --- POTATOES: MARKET STEADY US#1 SZ A WASHED OR BRUSHED UNLESS OTHERWISE STATED Russet Burbank

ID bld 10 5-lb sks non sz A 8.50 50 lb ctns 60s 13.00 70s 12.00-13.00 mostly 12.00-12.50 80s 11.50-12.00 90s 10.50-11.50 mostly 11.00 100s 9.00-10.50 mostly 9.00-10.00 50 lb sks 6 oz min fr qual 5.50-6.00 Round Red MN/ND 50 lb sks 7.50-8.00 mostly 8.00 sz B 10.00-11.00 NY 50 lb sks 6.50-7.00 sz B 9.00-10.00 WI 50 lb sks 8.00 sz B 11.00 Round White CD Prince Edward Island CDOne 50 lb sks 5.50-6.00 lge 6.00 LI

New Holland Sales Stables

Report Supplied By USDA
Monday, Jan. 4

	Calves	Sheep	Goats
Today	250	1470	1042
Last Week			
	453	1666	1204
Last Year			
	367	1374	961

CAVES: THERE WERE NOT ENOUGH VEALERS OR SLAUGHTER CALVES SOLD LAST THURS. FOR A PRICE COMPARISON. HOWEVER, SALES WERE MOSTLY STEADY WITH EARLY LAST WEEK. HOLSTEIN BULL FARM CALVES SOLD 2.00-3.00 LOWER AND HEIFERS WERE NOT WELL TESTED.

VEALERS: GOOD AND CHOICE 70-110 LBS. 17.00-23.00, FEW UP TO 26.00. STANDARD AND LOW GOOD 60-80 LBS. 10.00-20.00.

SLAUGHTER CALVES: GOOD AND CHOICE 200-300 LBS. 80.00-100.00; 300-450 LBS. 65.00-80.00. STANDARD 300-450 LBS. 55.00-70.00; 450-600 LBS. 45.00-55.00.

RETURNED TO FARM: HOLSTEIN BULLS 95-125 LBS. 70.00-107.00. PLAINER TYPE BULLS 80-115 LBS. 30.00-65.00. INDIVIDUAL HOLSTEIN HEIFER 110 LBS. 200.00. FEW PLAIN HEIFERS 70-90 LBS. 100.00-120.00.

SHEEP: DUE TO LAST WEEK'S HOLIDAY, THERE WERE NOT ENOUGH SHEEP OR GOATS SOLD ON THURS. FOR A MARKET TEST. ALTHOUGH WOOLED SLAUGHTER LAMB PRICES WERE MOSTLY STEADY AND ANEW CROP LAMBS SOLD SHARPLY LOWER WITH THE

CONCLUSION OF THE HOLIDAY SEASON.

SLAUGHTER LAMBS: NEW CROP CHOICE AND PRIME 2-3 40-60 LBS. 125.00-150.00; 60-80 LBS. 100.00-120.00. WOOLED CHOICE AND PRIME 2-3 60-80 LBS. 85.00-105.00; 80-100 LBS. 75.00-100.00; 100-130 LBS. 65.00-75.00.

SLAUGHTER EWES: GOOD AND CHOICE YEARLINGS AND 2 YEAR-OLDS 45.00-60.00. UTILITY AND GOOD 1-3 35.00-50.00.

GOATS: BY THE HEAD, LARGE BILLIES 100.00-125.00, FEW UP TO 150.00, MEDIUM 75.00-100.00; CHOICE AND PRIME MUTTON 70.00-95.00; LARGE NANNIES 60.00-80.00; MEDIUM 40.00-60.00; CHOICE AND PRIME YEARLINGS 50.00-75.00; CHOICE AND PRIME KIDS 40.00-60.00; GOOD 20.00-40.00.

Aberdeen Sales Company, Inc.

Complete Auction & Appraisal Service
Churchville, Md.

Report Supplied by Auction
Wednesday, Dec. 30

SLAUGHTER STEERS: STEADY. CHOICE 2-4 1100-1400 LBS. 61.50-64.00; SELECT & LOW CHOICE 1000-1500 LBS. 56.00-61.50; HOL STEERS HI CHOICE & PRIME 1250-1400 LBS. 53.00-57.00; CHOICE 1200-1500 LBS. 51.00-54.00; SELECT, ALL WEIGHTS 46.00-49.00.

SLAUGHTER HEIFERS: STEADY. CHOICE & PRIME 950-1300 LBS. 61.00-63.00; SELECT ALL WEIGHTS 900-1400 LBS. 49.00-56.00.

COWS: STEADY. BRK. UT. & COMM. 2-4 BULK 61.00-63.00; HI DRESSING 49.00-56.00; CUTTER & BON. UT. 1.00 HIGHER; HI DRESSING 36.00-39.00; CANNER & CUTTERS 39.00-43.00; LOW DRESSING 34.00-36.00.

BULLS: STEADY. ALL WEIGHTS

1100-1900 LBS. 43.00-51.00.

VEAL CALVES: 3.00 LOWER. CHOICE AND PRIME 200-400 LBS. 64.00-73.00; HI GOOD AND LOW CHOICE ALL WEIGHTS 46.00-59.00.

FARM CALVES: STEADY. HOL BULLS 100-125 LBS. 80.00-96.00; HOL BULLS 85-95 LBS. 42.00-70.00; HOL HEIFER CALVES 100-120 LBS. 125.00-180.00; SMALL FRAME 70-105 LBS. 30.00-65.00; SLAUGHTER CALVES ALL WEIGHTS 15.00-30.00.

FEEDER CATTLE: STEADY. BULLS & STEERS 400-900 LBS. 53.00-74.00; HEIFERS 300-700 LBS. 49.00-63.00.

LAMBS: STEADY. CHOICE & PRIME 90-110 LBS. 74.00-83.00; LIGHTER LAMBS 90.00-115.00; EWES - HEAVY 26.00-34.00, LIGHT 37.00-53.00.

GOATS: STEADY. SMALL 30.00-40.00; MEDIUM 45.00-75.00; LARGE 80.00-120.00.

HOGS: 2.00 HIGHER. 210-250 LBS. 15.00-19.00; 255-300 LBS. 14.00-17.00; SOWS - HEAVY 9.00-13.00; SOWS-LIGHT 7.00-11.00; BOARS ALL WEIGHTS 5.00-12.00.

MIDDLEBURG LIVESTOCK AUCTION

MIDDLEBURG, PA
JANUARY 5, 1999

CATTLE 354 . [PDA] Compared to last week's sale slaughter steers and heifers steady, sl cows steady with spots to 1.00 higher, sl bulls mostly 4.00 higher

SLAUGHTER STEERS High Choice and Prime 2-4 1240-1475 lbs 62 25-64 75, Choice 2-3 1150-1400 lbs 58 25-61 75, few 1500-1585 lbs 54 25-57 75, Select 1-3 54 75-59 75, Standard 1-2 49 75-54 00

HOLSTEIN STEERS one High Choice and Prime 2-3 1460 lbs 55 50, Choice 2-3 1200-1485 lbs 50 00-54 75, Select 1-2 44 75-50 25, Standard 1-2 38 00-44 00

HEIFERS one High Choice and

Prime 2-4 1320 lbs 63 75, Choice 2-4 1100-1410 lbs 57 25-61 00, Select 1-3 55 75-59 75, Standard 1-2 43 50-54 00

COWS Breakers 75-80% lean 35 50-40 00, Boners 80-85% lean 34 75 38 75, Lean 85-90% lean 29 00 37 00 Shells down to 22 50

BULLS Yield Grade 1 1000-2025 lbs 46 25-51 00, few Yield Grade 2 1200-1900 lbs 40 75-45 00

FEEDER CATTLE STEERS one Medium 1 360 lbs 59 00, HEIFERS few Medium 1 510-545 lbs 44 00, Large 2 410-575 lbs Holsteins 40 00 46 00, BULLS Medium 1 435-670 lbs 49 50-58 00, Medium 2 625-835 lbs 40 00-46 00

CALVES 236 VEALERS Standard and Good 75-100 lbs 20 00-27 00, Utility 65-90 lbs 15 00-20 00

FARM CALVES Holstein bulls 5 00 lower No 1 Holstein bulls 95-120 lbs 70 00 101 00, 80-90 lbs 60 00-72 00, No 2 95-120 lbs 32 00-70 00, 80-90 lbs 26 00-35 00, No 1 Holstein heifers 85-115 lbs 160 00 217 50, No 2 70-95 lbs 80 00-130 00

Beef type bulls and heifers 80-95 lbs 36 00-60 00

HOGS 239 (01/04 & 05/99) Bulk of supply sold on Monday and reported by the auction Barrows and gilts 1 50 higher, sows 1 00 to 2 00 higher

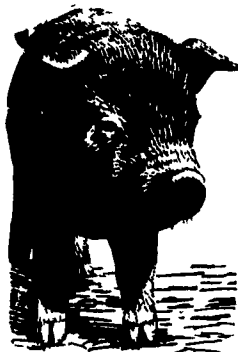
BARROWS AND GILTS 49-54% lean 235-270 lbs 25 00-27 00 with a few up to 30 00, 45-50% lean 230-275 lbs 20 25-24 50, 40-45% 290-380 lbs 18 00-29 00

SOWS US 1-3 320-490 lbs 11 00-17 00, few up to 23 00, 525-705 lbs 14 00-21 00

FEEDER PIGS 68 US 1-3 35-50 lbs 3 00-9 00 --- per head

SHEEP 1 NO MARKET TEST!

GOATS 15 One Large Billy at 70 00, one Medium 50 00, one Large Nanny at 39 00, Large Kids 25 00-37 00 --- per head



FOR SALE

GYPHUM - (Calcium Sulfate)

- * Great calcium & sulfur source without increasing soil pH.
- * Increases soil porosity and soil microbial life.
- * Decreases soil compaction.
- * Builds soil humus.
- * Ideal for home gardens, pastures, and agricultural fields.
- * Available Bagged or bulk.

*QUALITY BEDDING - Buy one load - get one free!!!
\$50.00/ton - free delivery within 10 miles of Leola.

For pick-up or delivery...call

Agri-Marketing, Inc.

Call (717) 627-2468 Today!



Bob Zook
Vice President
Ag Lending

My Calendar has 365 Days

The Ephrata National Bank has been providing loans and other banking services to farmers since 1881. Many of the philosophies that helped ENB enjoy more than a century of growth are as important today as they ever were. Take the way we calculate interest on loans. The traditional way to calculate interest on a loan is to use the number of days in a year, which on my calendar is 365. Many, if not most lenders use a 360-day year.

What does that mean to you? Well, on a one-year \$100,000 loan at 8%, your interest bill at ENB would be \$8,000. If you paid interest on the basis of a 360-day year, your loan would cost you \$8,111, or an annual difference of \$111.

If you prefer the traditional way we calculate interest, give me a call. We've got lots to talk about.

Ask about our fee free checking with no minimum balance requirement.

For more ag lending information, call 717-733-2911

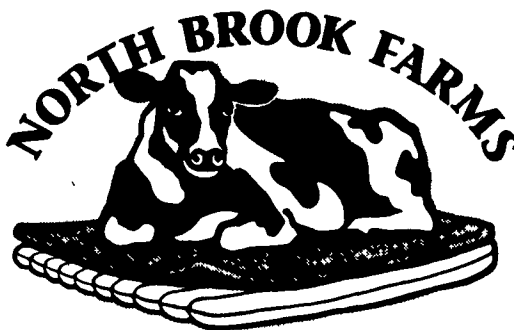


The Ephrata National Bank

MEMBER FDIC

Serving farmers since 1881

After lying on our mattresses your cows will never be the same...



They found the sound choice.

The EXCLUSIVE North Brook Farms Cow Mattress System, by the creators of the original mattress system.

COMPARE:

- ✓ Our Premium Quality WATERPROOF System... the only one of its kind!
- ✓ Our 80 oz. Non-Woven Fabric... The toughest, non-abrasive, moisture-resistant cover ever!
- ✓ Our 10-Cell Patented Woven Seam Construction Mattress... 130# of rubber, 30% more cow comfort.
- ✓ Our 3 Year Warranty.

NORTH BROOK FARMS
WEEDSPORT, NEW YORK
Call Toll Free: 877-624-2638



You saw us at the **Keystone Farm Show** and now the cows are clamoring for our **SHOW SPECIAL!**

INCLUDES:

1 set of 80 oz. Top Cover

1 Mattress

FREE Straps & Screws

OR ONLY \$42.95

SAVE \$11.35 PER STALL!

Special Offer through 2/15/99