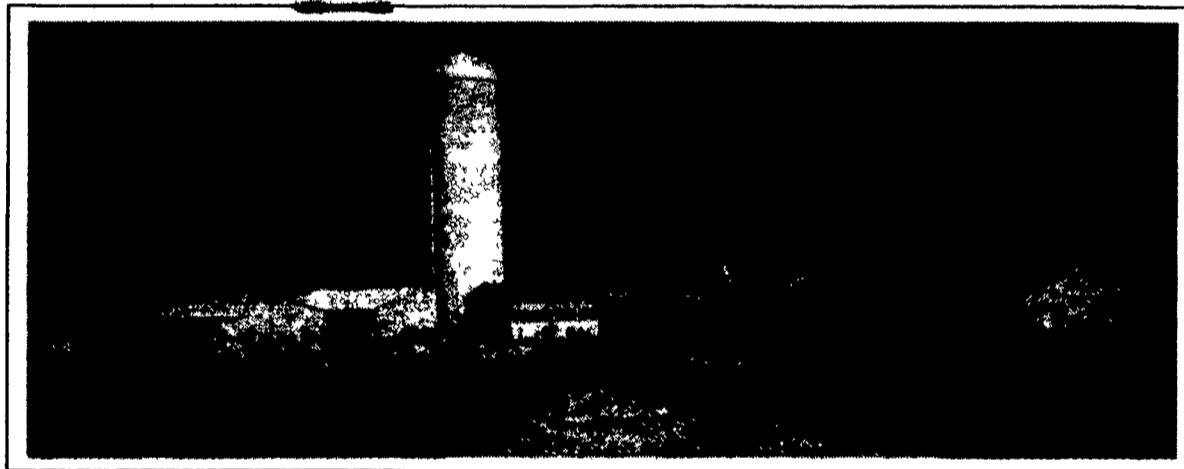
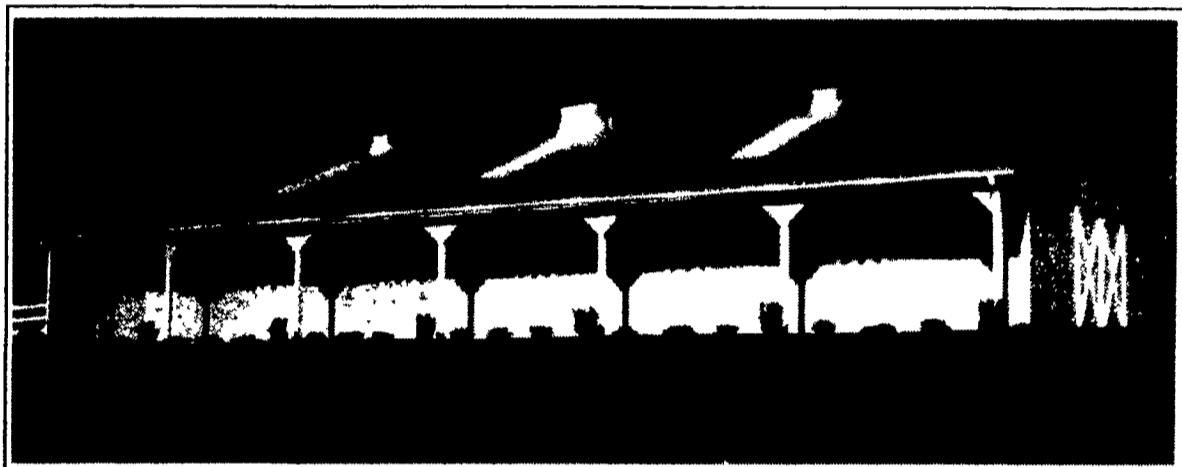


Planning to Expand or Update? Check with Agri-Inc Where Quality Is Our Standard



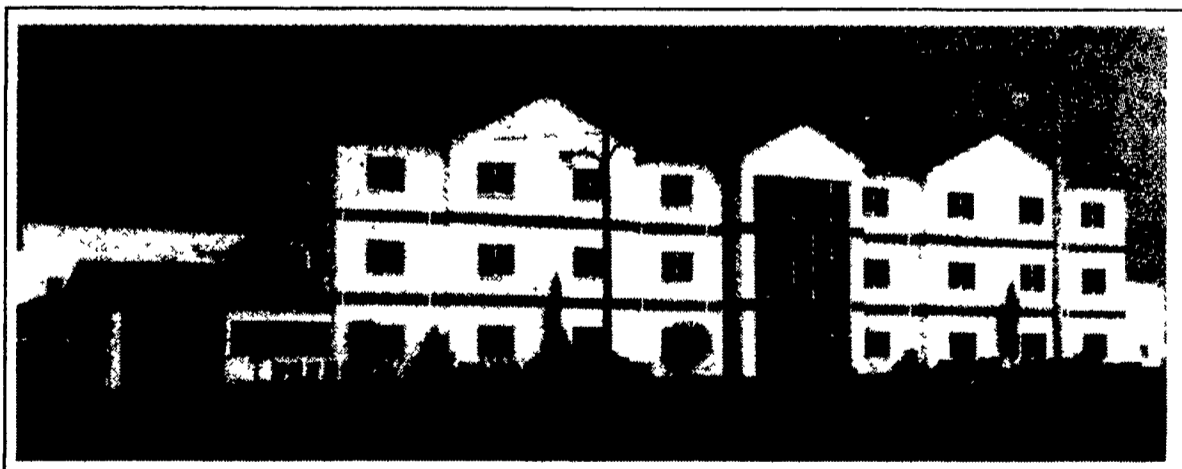
DAIRY COMPLEX
(Freestall Barn and
Milking Center)

**HORSE STALL
BARN**



**HEIFER FACILITY
AND
TIE-STALL BARN**

OFFICE FACILITY
(3-Story Facility
For Hatfield Quality Meats)



See Us In The
Old Main
Building Booth
401 at Keystone
Farm Show

**LET OUR EXPERIENCE OF OVER 30 YEARS
WORK FOR YOU - CALL NOW!**



AGRI-INC

The Construction Professionals

- Site Layout
- Building Design
- Construction

151 E. Farmersville Road, Ephrata, PA 17522 • (717) 354-4271
WWW.AGRIINC.COM e-mail: buildings@agriinc.com



Custom Built Farm & Commercial Buildings Designed To Your Needs