

SINCE 1936

M.M. WEAVER & SONS, INC.



MASSEY FERGUSON

Tractors And Combines



Meeting all your harvesting needs!

Leola, PA 17540 Phone: (717) 656-2321

Located: 4 miles West of New Holland on Rt. 23, 1 1/2 miles Northeast of Leola on the No. Groffdale Rd., 1 mile on the right, opposite Groffdale Mennonite Church.

USED TRACTORS

1988 Model MF30E 45hp Diesel Tractor With Loader and 3pt Hitch, 1540 Hrs	\$12,500
MF 255 Diesel, 50hp	\$5,800
Farmall H Tractor	\$1,200
Farmall 400	\$2,500
MF 165 Gas With Loader, 50HP	\$4,900
MF 1155 Tractor, 140 HP	\$11,500
Kubota B1750 4x4, 15 PTO HP 342 Hr	\$8,900
IH 140 with Belly Mower	\$3,200

DEMO TRACTORS

Model 3120-T, 2 Wheel Drive
MF 375 Tractor, 60 HP
MF 8160 4x4, 180 HP

USED COMBINES

Oliver 525 Combine with 2 Row 38" Corn Head, 11' Grain Head	\$2,000
Like New MF 8460 with Hillside Cleaning 6 Row 30" Corn Head, 20 ft floating Grain Head, less than 200 hrs	JUST IN
1996 MF 8570 4x4 Rotary Combine, 1,166 Hr, with 863 Corn Head	JUST IN
1976 Uni system 717 combine with 4 row 443 JD corn head	\$4,500
1990 MF 8460 2,573 hrs 15' Floating Grain Head, 6 Row Corn	\$64,000
1990 MF8460 with Hillside Cleaning, 20 ft Floating & 6 Row Corn Head, 3219 hrs	\$67,000
1981 MF860 with 15 ft Floating Grain Head with 3,400 hrs	\$12,000
1979 MF760 with 16 ft Floating Grain Head with 3,867 hrs	\$11,500
1979 MF550 with 13 ft Grain Head with 3,898 hrs	\$11,000
1977 MF750 with 15 ft Floating Grain Head	\$9,000
1975 MF760 with 18 ft Flex Head with 3263 hrs	\$9,500

USED HARVESTERS

New Holland FX25 with 6 Row Corn Head, Corn Cracker and Hay Head, 2 Yrs Old	COMING IN
Claas 695 4x4, 1993 Harvester, 354 HP, Hyd Outlets, 1270 Cutter HR, 6 Row Corn, 10 Hay	\$125,000
JD 3950 Harvester, 2 Row Corn and Hay Pickup	\$10,500
709 Uni System with 868 Harvester and 4x4 30" 4-row corn	\$19,500
Field Queen Side Dump, 3 Row Corn, 7' Hay, 4500 Hr	\$15,500

HAY EQUIPMENT

Vicon KMR Mower Conditioner 10-6 Used 1 YR	\$13,600
JD 347 Baler w/40 Thrower	\$5,400
New Holland 850 Round Baler 66" x66"	\$2,900
Claas 1550 dual Rotary Rake 21"	\$5,600
Hesston 550 Baler 46x75	\$7,900
New Holland 489 Haybine	\$2,900
JD 1600 Haybine, Hyd Swing	\$5,900
GMR 2800 Disc Mower Condition 9'4"	\$8,700
JD 335 Round Baler	\$8,000
Demo Vicon 1511E 5x6 Round Baler	\$9,900
Hesston 1120 Haybine 9'3" Cut	\$2,900

MANURE & FEEDING EQUIPMENT

Lucknow 220 TMR Mixer Wagon	DEMO
Lucknow 285 TMR Mixer Wagon	\$4,900
Used Vicon Feeder Man and Sub Stanchion	\$1,500

PLOWS & TILLAGE

Oliver 5-16 Auto Reset Plow	\$1,400
IH Chisel, 7 Tooth, 3pt	\$1,200
IH 700 Plow 4x16	\$1,900
McConnel 6 Row 30" Cultivator	\$1,250
JD 400 Rotary Hoe	\$1,400

MISC. EQUIPMENT

Buffalo 4-row Plateless Corn Planter 3pt	\$900
IH 510 Grain Drill	\$2,200
Brady 12 Ft Flail Shredder	\$5,500
Tye 10' No Till Grain Drill	DEMO
HARDI 300 Gallon Sprayer, 40" Folding Booms	\$1,700
New Holland Blower #25	\$600

SNOW BLOWERS IN STOCK

The CLAAS® Quadrant 1200 square baler – The new standard equipment for commercial operators



CLAAS doesn't have to sell a commercial operator on the advantages he gets from large, densely-packed square bales.

Yes, the Quadrant 1200 delivers that density commercial operators want. Yes, its bales inhibit spoilage by keeping the air out. Yes, they preserve quality because they minimize nutrient loss.

The 1200 also offers the high production capacities you demand. Its 4 ft x 2-1/4 ft x up to 8 ft long bales effectively increase storage space and dramatically increase transport capacities—all at a high productivity rate. And you know what this means to your bottom line.

The Quadrant makes easy work of dry hay, haylage and silage crops—whatever you've got. And it bales as much of it as you've got.

CLAAS's shaft-driven knotters have earned a worldwide reputation for reliability and low maintenance. Other notable features are its 3-stage pre-

chamber, 78" wide pickup, powerful transmission, heavy-duty worm gear, 1000rpm pto, hydraulic density control, capacity for up to 24 balls of sisal or plastic twine, and of course 6 dependable CLAAS shaft-driven knotters.

Production capacity. Convenient handling and storage. Economical transport. Density and quality. A better bottom line.

For more information about the Quadrant and how it can meet your commercial needs, contact the CLAAS dealer listed below.

Incidentally, CLAAS quality is also available in a smaller Quadrant model designed for dairy operators.

Discover
CLAAS
The Harvesting Specialist

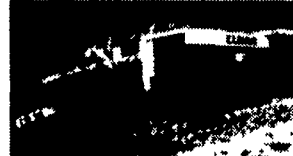
NO NONSENSE DESIGN, CLEAR DRIVE SYSTEMS

- Efficient design • Worm drive powered • No chains for improved precision, reduced wear • Heavy-duty ram for highest density

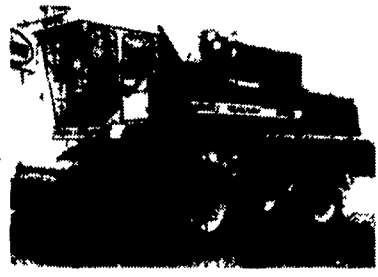


ROTO CUT® CUTTING SYSTEM.

- 25 knives provide 1-3/4" chop length on 1200 • 14 knives provide 2-3/4" chop length on 1150
- Knives engaged/disengaged from cab



1997 Claas 840 4x4 381 HP with 10' Hay Head, 6 Row Corn Head



1990 MF 8460 Combine with Hillside Cleaning, 20 Ft Floating and 6 Row Corn Head, 2189 Hrs
\$67,000



1994 Case IH 1688 4x4 Combine with 8 row corn 15' flex head, 20' flex head
JUST IN



1984 MF 860 4x4 Combine Ser # 18839 2,478 Hr
\$18,000