

FOR SALE



91 DODGE W250 4x4
 Cummins Diesel, 5-Spd, All New
 10 Ply Tires, No Air, 108,000 Miles,
 Blue (Grey Vinyl Int)
 Excellent Condition
\$11,800



88 FORD F350 DUALLY 4x4
 12 ft. Bed, 5-Spd, 7.3 Diesel, 72,000
 Miles, 11,000 GVW, Red
\$9,700

SCHAEFFERSTOWN AUTO & TRUCK SALES
 Rt. 501, 1 1/2 miles South of Schaefferstown
 717-949-2812

USED TRUCKS



97 Ford F-350, XL 4x4
 7.3 Powerstroke Diesel 5 Spd AC AM FM Sliding Rear
 Window Dual Tanks 9000 GVW 3.55 Rear Dark Green
 32,000 Mi
\$24,700



96 GMC, K-2500 SLE
 4x4 350 Vortec Eng 5 Spd AM FM Sliding Rear Window
 8600 GVW 3.73 Rear PA One Owner DK Green
 84,000 Miles
\$17,900



96 Chev. K-2500 Silverado
 4x4 Ext Cab 350 Vortec Eng AT AC Loaded P Seat P
 Mirror 8600 GVW 4.10 Limited Slip Rear AM FM
 Cass CD 55,000 Miles dk. Blue NJ One Owner
\$20,500



96 GMC 2500 SLE
 4x4 454 Vortec Eng AT AC P Wds P Dsl Cruise Tilt
 AM/FM Cass CD Player P Seat 8600 GVW 3.73 Limited
 Slip Rear 3,600 Miles Black Like New
\$20,500

MARTIN'S AUTO SALES
 1025 W. Main St. New Holland, PA 17557
 (717) 656-6621

Super Rugged Commercial Grade

WHY CURTIS?

**FEATURE 7 (OPTIONAL)
 GRILL MOUNTED REMOTE LIFT SWITCH**
 Allows operation of lift cylinder from front
 of truck to assist in plow installation

**FEATURE 1
 HIDE AWAY HYDRAULICS**
 Our hydraulic cavity tucks away our
 power system. No belts and pulleys
 under the hood and no ugly box on
 the front of your truck. A 1/4" skid
 plate and gasketed top cover are also
 standard features. This system allows
 superior airflow to radiator and provides instant down
 pressure with added weight on the cutting edge

**FEATURE 4
 FORMED CROSS MEMBERS**
 give an exclusive stability
 unseen in other plows

EXTENDED PUSH FRAME (E)
 Clearly the widest push frame on the market.
 ADVANTAGE superior distribution of force through
 the plow system and not the vehicle frame

**FEATURE 6
 PLATE STEEL A FRAME**
 This laser cut frame system joins 3 main
 members for a raw strength unequalled
 by the competitor's angle iron frames

**FEATURE 3
 FOUR PIN PIVOT FRAME**
 Spreads weight evenly across frame and
 adds support to lower section of plow

**FEATURE 5
 ATTACK ANGLE**
 Our modern designed
 moldboard
 features an 18
 contact angle for a
 superior glide trip in
 most snow conditions

Compared to the rest...

Curtis Feature #	Description	Fisher	Meyer	Western	Boss	One Way
1	Hide away Hydraulics					
2	Extended Push Frame					
3	Four Pin Pivot Frame					
4	Formed Cross Members					
5	Attack Angle					
6	Plate Steel A Frame					
7	Grill Mounted Lift Switch Option					

NO!

This Plow Can Be Purchased @ the Following Locations:

PRECISION CARS, INC.
 19914 Leitersburg Pike
 Hagerstown, MD 21742
 (301) 739-6640

GINDER'S GARAGE
 2327 S. Market St.
 Elizabethtown, PA 17022
 (717) 367-8067

DREXEL AUTO SUPPLY
 333 Steinman Farm Rd.
 Pequea, PA 17565
 (717) 284-2916

BRUCE WITTE, INC.
 6417 Davis Rd.
 Mt. Airy, MD 21771
 (301) 829-0271

ROCK SPRINGS HARDWARE
 1320 Rock Springs Rd., Rising Sun, MD 21911
 (410) 658-5978 (800) 858-0288
 OPEN 7 DAYS A WEEK

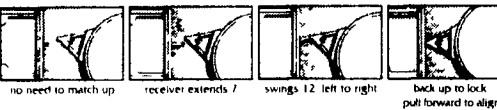
Quic 'n Easy
 RECEIVER HITCH BY DMI

The Latest In-Tow-Vation!



- Fits under your truck bumper, mounting directly to your truck frame
- Spring "Cush'n" takes the push/pull out of towing lowering stress on the driver and truck drive train
- Brings the receiver to your load - extends 7 and swings 12
- Tows whatever your truck is rated to tow - exceeds Class IV certification
- Exclusive Proximity Hook up - one person gets it right the first time
- Accepts a variety of adapters, drawbar ball step up or step-down pintle hook and weight distribution system

Never Miss a Hitch Again. DMI



Weaver Distributing
1-800-Weaver-D
 RR2, Box 470, Fredericksburg, PA 17026

John E. Kreider

Specializing in Rebuildables
 5348 Beagle Rd., E-town, PA 17022
 717-361-9296



1993 Ford F-250
 Super Cab, 4x4, 5.8L V8,
 AT, AC, 81,660 mi
 Right side of cab damaged
 Runs & drives
\$6,900

1992 Ford Ranger XLT
 3.0 V6, 5 Spd, AC,
 74,479 mi Needs Front
 Very little frame damage
\$1,750



1994 Ford Aerostar Ext.
 3.0L V6, AT, AC, Most
 Options Hit left rear and
 right side swiped Most
 parts available to repair
 Runs & drives
\$1,900.

1995 Plymouth Grand
Voyager SE 3.3L V6, AT,
 PW, PL, Cruise, Tilt, Cass,
 Dual AC & Heat
 67,641 mi
 Left front damaged
\$3,900



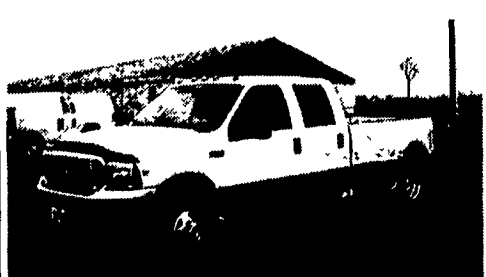
KELLER BROS.

(Buffalo Springs) Lebanon, PA
717-949-2000 or 1-800-363-2767
LEBANON COUNTY'S HEAVY DUTY TRUCK HQTRS.

1995 FORD F250
SUPER CAB 4X4
 XLT, Diesel, Low Miles



1918 FORD "T"
PICK-UP
 Just Traded



1998 CHEV
K1500 EXT. CAB
 4x4 Silverado, 5.7
 Vortec V8, Loaded



1995 FORD
WINDSTAR GL
 Loaded, Green,
 Holiday Special
\$11,950



1999 F250s, 350s, XLs, XLTs &
Lariats. Single Axles & Duallys,
 Gas or Turbo Diesels

OVER 20 IN STOCK
 Lebanon County's Heavy Duty
 Truck Headquarters

1996 FORD F250
 Super Cab, H.D.,
 4x4, Auto., XLT



1991 FORD
EXPLORER 4x4
 XLT Trim, AT, Loaded,
 Red
\$8,450



1994 FORD F150
SUPERCAB 4X4
 XLT, V8, AT, A/C, PW,
 PL, Short Box



1987 FORD F250
SUPER CAB 4x4
 XLT, AT, V8,
 Just Traded



1998 FORD
F150
 Super Cab, 4x4, XLT,
 V8, Auto., Low Miles



1990 FORD F150
SUPERCAB 4X4
 Maroon & Tan
 Special
\$5,850



1991 DODGE
RAM VAN
 8 Passenger,
 Local Trade
\$6,950



1999 FORD F350
CREW CAB
DUALLY
 Cab & Chassis, V-10,
 AT, XLT Trim



1989 GMC 3500
CHASSIS CAB
 One Owner, Just
 Traded



1984 FORD F250
SUPERCAB
 Dually, Diesel, AT,
\$7,995 \$6,995



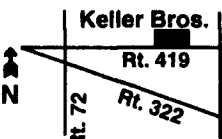
1995 SHASTA
23 FT. TRAILER
 Self-Contained, Has
 Everything, Like New
 Reduced!
 Call for Details



1989 & 1990
FORD BRONCO II's
 XLT, 4x4
 Starting At \$3,495



1997 FORD F250
4x4 DIESEL
 5-Speed, XLT, 19,000
 Miles, Like New



KELLER BROS. FORD HAS
SERVED CENTRAL
PENNA. AREA FOR MORE
THAN 75 YEARS.

