

'87 Volvo F-615, 33,000 GVW, 20' reefer body w/ Silver Hawk unit, less than 10,000 miles on rebuilt engine, \$12,000. '86 Volvo F-7, 33,000 GVW, 20' reefer body w/Thermo King unit, \$8500. 40' Great Dane, reefer trailer, \$3000. 717-587-2659

'88 Ford Ranger XLT, long bed, 4 cylinder, 5 spd, PS, PB, air, AM-FM cassette, new radials, burgundy w/ matching fiberglass cap, 57,000 miles, excellent condition, \$2,975. 717-733-2873

'89 3-axle low boy, 20', 22,000 GVW. Will trade for 2-axle trailer or van box trailer. 717-355-0279

90 F-350 14' Box Van, 67,000-Miles, Excellent Rubber, Clean Truck \$6,850. (717)285-6927.

'92 Ford XL F150 super cab, 300 EFI, 5 spd, PS, PB, AM-FM, dual tanks, 50,000 one owner miles, burgundy, \$7,950. 717-733-2873

'93 Chevy S10 Tahoe extended cab, V6, 5 spd, PS, PB, AM-FM cassette, 39,000 one owner miles, excellent condition, \$7,600. 717-733-2873

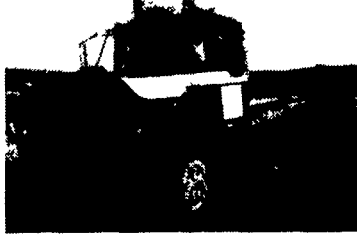
'94 Dodge 1500, HD, 1/2 ton, 3.9 V6 Magnum, 5 spd, PS, PB, AM-FM, 6,400 GVW, new radials, excellent condition, \$8,900. 717-733-2873

'94 Ford XL F150 pickup, 300 EFI, 5 spd, PS, PB, AM-FM, dual tanks, dark blue, one owner, excellent condition, \$6,950. 717-733-2873

94 Peerless walking floor trailer 45' slider tandem, rollover tarp, 95cu. yd., excellent condition, \$30,000 717-653-9580

FOR SALE; JD 3020 Diesel, Power Shift, 48 Loader.; 78 Ford 700 Dump Truck w/ 18' Bed. 2,300 GVW, \$4,500/obo (717)933-5224.

MACK PARTS FOR SALE: Engines, blocks, heads & cranks, cabs, hoods & doors, trans, rears, ALL MACK PARTS REASONABLE PRICES MACK TRUCKS BOUGHT (complete or parts) 888-625-6485.



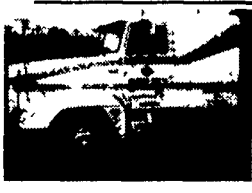
1985 DM 300 6 speed, 44 rears
\$13,900 OBO
610-944-9871



1991 Volvo WG64T Wet Line, All Volvo Components VE12-360CE, VT 1309 Trans, 3 36 Rears, 12FA38RA T-Ride, 11R22.5, Engine Brake, 571,000 Miles On Truck, 525,000 Inframe, Intercooler, Cam, Turbo, Heads, Injectors, Oil & Water Pump, \$18,287 Rebuilding Since 12/96 \$18,500



1983 380B Case Loader, Only 680 Hrs. Like new, Used To Rotary Mow, Rear 540 PTO, Canopy ROPS, Hydraulics, Mower, Will Separate Mower for \$1,000 \$11,500



1994 Freightliner FLD120 Wet Line, (1) Daycab 190 WB, (1) 44" Sleeper 215 WB, Set Back Axle, Cummins N14-430E Electronic, Jacobs Brake, Fuller RTX-14609B 9 Speed, 4.10 Rears, 11R24.5 Aluminum Wheels, Twin 120 Gal. Tanks Split For Hydraulics, Air Ride Suspension And Cab \$37,000



1978 GMC Big Wheel 1500 Gal. Stainless Tank, 427 Gas, Allison Auto w/2 Spd., Pump & Injectors, Large Flotation Tires, Excellent Condition \$12,000



1979 East Dump Trailer 26' Roll Tarp, Tires and Brakes Are Very Good, 26' Aluminum 60" Sides, Good Cylinder, Overall Good Trailer. \$8,000



898 Old 22
Lenhartsville, PA 19534
1-800-776-4383 • 610-756-4343

TRUCKERS
27' RATCHETS.....\$15.95
WINCH STRAPS.....\$12.95
RUBBER T STRAPS...54¢
COMPLETE ROLL TARP SYSTEMS
TIRONIE TARPS
(800) 874-2928 • FAX: (717) 584-3127

Mack
ALL STAR
Used Trucks

Includes 200,000 Mile Engine Warranty,
All Trucks Have Been Run on Dyno.
1994-1995 E7-350 RTLO14610B 10 Spds.,
DS404 - 3.9OR on Air, Steel Disc Hub Pilot,
295/75R 22.5 192 WB, 42" Highrise,
440,000 Miles

1993 MACK
CH613
EM7-300,
RTX14709H-9 Spd.,
Reyco 4:11R
139" W.B.

1993 Mack CH, E7-350 Engine, 9-Speed Fuller,
Air Ride Susp., 192" WB,
Steel Hub/Pilot on Low Pro 22.5

1992 IH 8100
Cummins L-10
310HP
9-Speed Spicer,
Reyco - 4:10 R

ONE HERE & READY
To Put Out on LEASE
1999 Isuzu NPR 14 Ft.
Supreme Van Body,
Call For Details
Ask For Leasing Dept.

LESHER Mack
SALES & SERVICE

2700 Cumberland Sts. (Route 422 West) Lebanon, Pa. 17042
717-273-4535

LEED TRUCK CENTER
402 South Chiques Rd. Salunga Exit, Route 283 717-898-1200

87 Iveco Z110 12 C&C
88 Iveco Z220 12 C&C
86 Iveco Z220 20' Van
Year End Specials

81 IHC S1854
DT 466 5&2 Spd., P/S, Hyd Brakes,
28,000 GVW, 18' C&C
Year End Special

87 FORD CF8000
7.8 Liter Turbo Diesel, 5&2 Spd., PS
A/B 33 000 GVW, 26' C&C
Only 277,000, Insp Clean
Only \$6,500

87 FORD F700
370 V8, Gas, 4 Spd., PS, Hyd Non
CDL, 21 300 GVW, 18' Van with L/G
Insp. Clean
Only \$4,900

1997 DODGE RAM 1500 SLT, 4x4, V8, AT, AC, PW, Long Bed, 2-Tone Paint, Alloy Wheels, Local 1 Owner, Performance Exhaust, New Good Year Rangler, Only 22,000 Miles, Runs & Sounds Great..... \$19,900

1996 DODGE DAKOTA EXT. CAB, Sport, 2WD, Big V6, AT, AC, Stereo, Cass., Forest Green Metallic, Only 35,000 Miles, Alloy Wheels, Perfect Truck!..... \$11,900

1995 FORD BRONCO XLT, 351, AT, AC, Only 34,000 Miles, Brand New! Raspberry & Black, Alloy Wheels, 1 Owner..... \$18,500

1994 CHEV SILVERADO 3/4 TON 4x4 SUB-URBAN, 6.5 Turbo Diesel, AT, Dual AC & Heat, PW, PL, Tilt, Cruise, 3rd Seat, Local 1 Owner, Blue & Autumn Wood, Ready to Run... \$19,900

1994 FORD F-150 XLT EXT CAB, 4x4, Shortbed, V8, AT, AC, PW, PL, Two-Tone Green, 54,000 Miles, One Owner, New Tires, Very Clean Truck..... \$15,900

1992 FORD F-150 XLT 4x4, AT, 351, Reg. Cab, AC, PW, PL, Alloy Wheels, Only 31,000 Miles- WOW! Local Trade, Green... \$14,900

1992 FORD F-250 XL HEAVY DUTY, 2WD, 351, AT, AC, Long Bed, 117,000 Miles, Nice Truck, White, Grey Int..... \$7,300

LOOK! 1990 IVECO EURO DIESEL BOX TRUCK, 5 Spd., 14 Ft. Box, 1 Owner, Only 65,000 Miles, Runs Super, New Insp., Lots of New Parts..... \$8,900

1988 DODGE DAKOTA 4x4, 3.9 V6, AT, AC, Long Bed, Matching Topper, Blue & Grey, New Insp., 102,000 Miles, Nice Shape..... \$5,900

1985 FORD F-250 XLT HEAVY DUTY, 2WD, 6.9 Diesel, 1 Owner Truck, 2-Tone Paint, AT, AC, PW, PL, Good Miles..... \$5,900

(717) 949-6513

"Revvin' to take care of ALL your trailer needs."

HAS BUILT A REPUTATION

United Expressline 8x16 Cargo Bison 616HPT **EDY** Aluminum 7x20 Gooseneck

NEW & USED: STOCK - HORSE - CARGO - INDUSTRIAL - UTILITY - CAR HAULERS

Trailer Enterprises is here to serve you. We are a full service facility providing YOU with the very best service available in the industry!

TRAILER ENTERPRISES, INC.
13121 MAUGANSVILLE ROAD
HAGERSTOWN, MD 21740
Just give us a call at (301) 791-5343.

Hours: 8AM-5PM Monday-Friday
9AM-12 Noon - Saturday

HUNTER KEYSTONE PETERBILT LP

1467 Manheim Pike • Lancaster, PA 17604
717 299-6630 • 800 243-2458

91 International, 8100 Eng, L 110 Cummins, 7 Speed Trans., 12,000# Front, 23,000# Rear Axle, Spring Susp., Air Brakes

'84 Peterbilt 362, Cummins, 350 HP, 13 Speed; Air Ride Susp. w/Tag Axle.

90 379 Peterbilt, Det. S60 454 Hp Eng., 9-Speed, 4:4 Ratio, 48" Sleeper, Peterbilt Air Leaf Susp., Air Brakes

87 Peterbilt 349 Cummins FL10-300 Eng., 3 55 Ratio, Peterbilt Air Leaf Susps., 9-Speed Trans, Air Brakes