

### STEEL BUILDINGS

Factory Direct/Drop Shipped

Call 609-702-0550

Fax 609-702-0440

### BUILDING STONE FOR SALE



Approximately 400 tons available from old mill near the Blue Mountains. Rt. 72, Jonestown, Lebanon Co., PA.

'65" per ton

contact: E.L. Mease  
717-865-4810

### STEEL BUILDINGS

Factory Direct Prices

Industrial - Commercial - Agricultural

In Stock Metal Building Supplies:  
Girts, Purlins, Sheeting, Etc.

Scenic Ridge Construction

48 Queen Road

Gordonville, PA 17529

Contact Elam or Carl

Phone: (717) 768-7522

Fax: (717) 768-5822



### 1998 INVENTORY CLEARANCE

40-50% OFF

CALL NOW!



BOTH ARCH & STRAIGHT WALL



### FACTORY DIRECT

30x40 (2 LEFT) 45x90 (1 LEFT)  
40x60 (2 LEFT) 50x100 (1 LEFT)

### PIONEER STEEL BUILDINGS

1-800-813-1358 EXT. 222



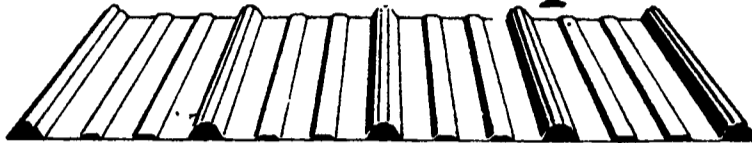
35 RIDGE ROAD  
NEWVILLE, PA

### BUILDING PRODUCTS

- Metal Roofing & Siding Sales
- Specializing in Custom Trim

PHONE 1-800-782-2712 -717-776-5951

## Rural Economy



Cost-efficient Centurydrain® roofing and siding is on some of the best looking buildings in the country.

Build with Centurydrain roofing and siding and you've built a money-wise structure. Full-hard, high tensile galvanized steel, and an exclusive drain channel for a dry interior give you a building that'll handle years of hard duty and hard weather. Good looking, too. Crisp lines and plenty of bright, long-lasting colors make Wheeling Centurydrain as handsome as it is economical.

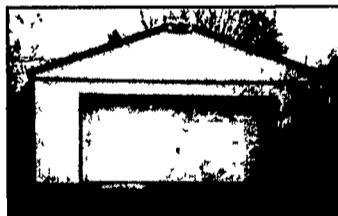
★ ★ Manufacturing Custom Trim ★ ★

MARTIN'S ROOFING  
(717) 532-3460

258 Walnut Bottom Rd.  
Shippensburg, PA 17257  
Rt. 81, Exit 10

## Warm Up

With Winter Post-Frame Specials!



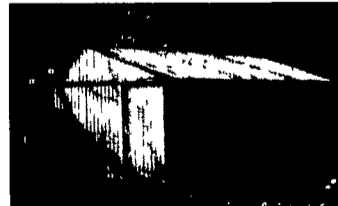
20x24x8 \$4,700

- (1)3'0"x6'8" steel entry door
- (1)16'x7' insulated raised panel overhead door



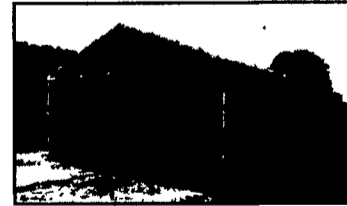
30x40x10 \$9,000

- (1)3'0"x6'8" steel entry door
- (2)9'x8' insulated raised panel overhead doors



32x56x12 \$11,800

- (1)3'0"x6'8" steel entry door
- (2)16'x12' split sliding doors



42x96x14 \$23,500

- (1)3'0"x6'8" steel entry door
- (2)20'x14' split sliding doors

These special prices include taxes, delivery, labor for construction, and your choice of color on sides, roof, and trim! We custom-build to meet your specifications. Conestoga offers company-owned crews, free estimates and brochures, with financing available. Call us today!



CONESTOGA Buildings

1-800-544-9464

### \$ WHOLESALE \$

1/2" to 8" PIPE 1/2" to 8"

Prime, secondary, structure pipe  
Farmers, Manufacturers, Fabrication  
— Will Cut To Your Size Needs —

STEEL TUBING

1 1/2" Sq 3 1/2" Sq 2'x2' Sq 2'x4' Rect  
2 1/2" Sq 4 x4" Sq 3'x3 Sq 3'x2' Rect  
20 to 24 Lengths 1/8" to 1/4" Thick

### BRICKER'S PIPE YARD

717-261-0095

1970 Frank Road  
Chambersburg, PA 17201

### A & E ENTERPRISES, INC.

Specializing in Agricultural & Commercial Buildings

### STEEL BUILDINGS & POLE BARN

MATERIAL PACKAGES TO FULL CONSTRUCTION

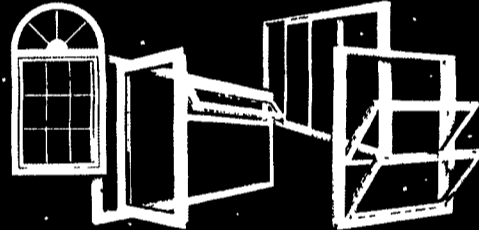
SPECIAL PRICING PACKAGES

FREE ESTIMATES!

Build now before winter sets in!

28 Evergreen Road Phone: (717) 274-3488  
Lebanon, PA 17042 Fax: (717) 274-3781

### TOMORROW'S TECHNOLOGY AVAILABLE TODAY...



Heat tempered windows so strong they are warranted for life -

The Life of the PROPERTY!

Manufactured locally, exclusively for



SENENIG'S SPOUTING

Call today for a Free Estimate

265 E. Meadow Valley Rd., Lititz, PA 17543

717-733-7160 • 717-627-6886

1-800-247-2107

Consider a Gift Certificate From Millway Home Improvements

Financing Available



### SAVE THOUSANDS Inventory Clearance For The Do-It Yourselfer

- Farm
- Industrial
- Commercial
- Warehouse
- Recreation
- Shop



toll free: 1/888-568-9349

All steel buildings  
Simply bolts together  
20 year roof & wall rust through warranty backed by steel mills  
Stamped certified engineered drawings for permits

40x60x12	\$15,400 value / now \$8,800
40x80x14	\$23,100 value / now \$12,447
50x60x16	\$22,150 value / now \$12,088
50x100x16	\$34,200 value / now \$17,752
60x150x16	\$55,350 value / now \$29,240
60x200x16	\$62,400 value / now \$39,761

Call For Discounts On Additional Sizes  
Colored Sides and Ends  
visit our website - www.mastercraftbuildings.com