



97 JD 7810, 150 HP, MFWD, C/A, 20.8x38, 955 Hrs., 2 Rem Power Quad, Exceptionally Nice, Warranty \$64,900



85 JD 4850, 190 HP, MFWD, C/A, 20.8x38, 3975 Hrs., 2 REM, PS, Very Nice \$44,500



'85 JD 2950, 85 HP, MFWD, C/A, 18.4x38, 6660 Hrs., 2 Rem, Hi-Lo, Very Good \$23,000



'92 JD 6810, 435 HP, 2WD, C/A, 30.5x32, 1378 Hrs., Metal Det., Hydro, Very Nice with Kernal Proc. & 6-Row Class Corn Head. \$98,125



89 JD 5830, 300 HP, 4 WD, Cab, 28LRx26, 2091 Hrs., Metal Det., Hydro, Very Nice With Kernal Proc. 6-Row Narrow Corn Head \$69,715



90 JD 5830, 300 HP, 4WD, Cab, 28LRx26, 2759 Hrs., Metal Det., Hydro, Very Nice With Kernal Proc. & 6-Row Narrow Corn Head \$68,880

- JD 6 Row Narrow Corn Head, Field Ready...\$11,500
- JD Kernal Processor, Field Ready.....\$9,500
- JD 4 Row Converging Narrow Corn Head, Field Ready.....\$7,750
- JD 13' Grass P/U Head, Floating Auger, Field Ready.....\$7,500
- JD 7' Grass P/U Head, Field Ready \$3,500
- '89 JD 5730, 225 Hp, 2WD, Cab, 23.1x26, 3072 Hrs., Metal Det., Hydro, Good Clean Machine w/Kernal Proc. & 13' Grass P/U Head.....\$43,550
- '83 JD 5820, 280 Hp, 2WD, Cab, 23.1x26, 4243 Hrs., metal Det., Hydro, Good Clean Machine With 4-Row Narrow Corn Head.....\$26,835
- '83 JD 5820, 280 Hp, 2WD, Cab, 23.1x26, 2363 Hrs., Metal Det., Hydro, Very Good, With Kernal Proc. & 4 Row Class Corn Head.....\$38,505
- '87 JD 5830, 300 HP, 2WD, Cab, 23.1x26, 3556 Hrs., Metal Det., Hydro, Good Machine . . . \$42,760
- '88 JD 5830 300 HP, 4WD, Cab, 23.1x26, 3187 Hrs., Metal Det., Hydro, Good Clean Machine.....\$47,770
- '89 JD 5830, 300 HP, 4WD, Cab, 28 1x26, 4101 Hrs., Metal Det., Hydro, Good Clean Machine.....\$48,335
- '89 JD 5830 300 HP, 2WD, Cab, 28x26, 1803 Hrs., Since Eng. O/H, Metal Det., Hydro, Very Nice.....\$48,555
- '87 JD 5830, 300 HP, 2WD, Cab, 23.1x26, 3790 Hrs., Metal Det., Hydro, Good Clean Machine, Kernal Proc. & 6-Row Class Corn Head . . . \$50,995
- '92 JD 5830, 300 HP, 2WD, Cab, 28LRx26, 3243 Hrs., Metal Det., Hydro, Good Clean Machine.....\$54,110
- JD 5830, 300 HP, 2WD, Cab, 23.1x26, 3284 Hrs., Metal Det., Hydro, Good Clean Field Ready Machine with Kernal Proc. & 6-Row Narrow Corn Head.....\$57,250
- '88 JD 5830, 300 HP, 2 WD, Cab, 28x26, 3521 Hrs., Metal Det., Hydro, Good Clean Machine With Kernal Proc. & 6-Row Class Corn Head & 13' Grass P/U Head . . . \$57,665
- '89 JD 5830, 300 HP, 2WD, Cab, 23.1x26, 2017 Hrs., Metal Det., Hydro, Very Good, With Kernal Proc. & Class 4-Row Corn Head & Kemper 3000 4-Row Corn Head.....\$69,205
- '91 JD 5830, 300 HP, 4WD, Cab, 28LRx26, 2476 Hrs., Metal Det., Hydro, Very Nice With Kernal Proc. & 6-Row Class Corn Head & 13' Grass P/U Head.....\$74,135
- '92 JD 6810, 280 HP, 2WD, Cab, 30 5x32, 1670 Hrs., Metal Det., Hydro, Very Nice, With Kernal Proc. & 4 Row Narrow Corn Head.....\$77,775
- '94 JD 6810, 360 HP, 2WD, Cab, 800/65Rx32 - 1852 Hrs., Metal Det., Hydro with Kernal Processor & 6-Row Corn Head.....\$107,935
- '92 JD 6710, 310 HP, 2WD, C/A, 840/75Rx32 2340 Hrs., Metal Det., Hydro, Very Nice, With Kernal Proc. & 6 Row Class Corn Head.....\$79,820
- '92 JD 6710, 310 HP, 2WD, C/A 24.5x32, 1919 Hrs., Metal Det., Hydro, Very Nice, With Kernal Processor & 6-Row Class Corn Head . . . \$93,305
- '92 JD 6810, 435 HP, 2WD, Cab, 24.5x32, 1975 Hrs., Metal Det., Hydro, Good Clean Machine With Kernal Proc. & 6-Row Class Corn Head.....\$86,880
- '92 JD 6810, 435 HP, 2WD, Cab, 30 5x32, 3000 Hrs., Metal Det., Hydro, Good Clean Machine With Kernal Proc. & 6-Row Class Corn Head \$94,825
- '92 JD 6810, 435 HP, 2WD, C/A 30.5x32, 1850 Hrs., Metal Det., Hydro, Very Nice, With 6-Row Corn Head.....\$97,925
- '93 JD 6810, 435 HP, 2WD, Cab, 30 5x32, 1717 Hrs., Metal Det., Hydro, Very Nice, With Kernal Proc. & 6 Row Corn Head.....\$107,805
- '93 JD 6810, 435 HP, 2 WD, Cab, 24 5Rx32, 790 Hrs., Metal Det., Hydro, Very Nice with Kernal Proc. & 6-Row Class Corn Head . . . \$117,385
- '93 JD 6810, 435 HP, 2WD, Cab, 24 5x32, 1213 Hrs., Metal Det., Hydro, Very Nice.....\$119,705
- '94 JD 6810 435 HP, 2 WD, C/A 30 5X32, 1200 Hrs., Metal Det., Hydro, Very Nice, With Kernal Proc. & 6 Row Class Corn Head.....\$130,765
- '96 JD 6810, 435 HP, 2WD, Cab, 800/65Rx32, 1014 Hrs., Metal Det., Hydro, Very Nice, With kernal Proc. & Kemper 4500 6-Row Corn Head . . . \$157,815
- '93 JD 6910, 490 HP, 4WD, 4WD, Cab, 800/65Rx32, 1550 Hrs., Metal Det., Hydro, Very Nice with Kernal Proc. & Kemper 4500 6-Row Head.....\$149,990
- '92 Class 695 Mega 350 HP, 2WD, C/A, 28Rx26, 2000 Hrs., Metal Det., Hydro, Very Nice, With Kernal Proc. & 6-Row Class Corn Head \$84,335
- '98 Class 880 Jaguar, 495 HP, 4WD, C/A, 30 5x32 1300 Hrs., Metal Det., Auto Sharpening, Hydro, Exceptionally Nice, 14' Grass P/U Head, Kernal Proc., Kemper 6000 8 Row Corn Head \$162,250
- '97 Class Jaguar 880, 495 HP, 4WD, C/A, 650/75Rx32, 790 Hrs., Metal Det., Auto Sharpening, Hydro, Exceptionally Nice With 10' Grass P/U Head & Kernal Processor . . . \$173,880
- '96 Class Jaguar 880 SL, 495 HP, 4WD, C/A, 30 5Rx32, 1225 Hrs., Metal Det., Auto Greasing, Auto Sharpening, Hydro, Exceptionally Nice With 10' Grass P/U Head & 8 Row Class Corn Head . . . \$211,775
- Kemper 3000, 4-Row Head, Field Ready . . . \$19,000
- Kemper 4500, 6-Row Head, Field Ready . . . \$28,900

BEFORE YOU BUY ANY TRACTOR...

NEW or USED 2WD or 4WD
CHECK the UNBELIEVABLY LOW PRICES at

DAVEY JOAN'S TRACTOR SUPER-MART

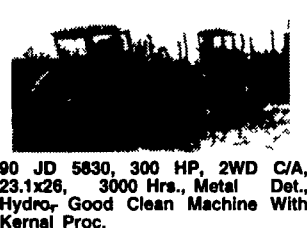
Location Junction of NY 104 and NY 13, Williamstown, NY 13493
12/19/98 1-315-964-2294 or 800-813-8046



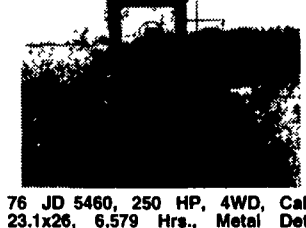
88 JD 5830, 300 HP, 2WD, Cab, 28.1x26, 3521 Hrs., Metal Det., Hydro, Good Clean Machine with Kernal Proc. & 13' Grass P/U Head & 6-Row Class Corn Head \$57,665



'82 JD 5820, 280 HP, 2WD, Cab, 23.1x26, 5,430 Hrs., Metal Det., Hydro, Sound Power Train. \$22,500



90 JD 5830, 300 HP, 2WD C/A, 23.1x26, 3000 Hrs., Metal Det., Hydro, Good Clean Machine With Kernal Proc. \$51,115



76 JD 5460, 250 HP, 4WD, Cab, 23.1x26, 6,579 Hrs., Metal Det., Hydro Sound Power Train \$22,565



85 JD 5820, 280 HP, 4WD, C/A, 23.1x26, 3600 Hrs., Metal Detector, Hydro, Good Clean Machine with 7' Grass P/U Head, 6-Row Class Corn Head & Kernal Proc. \$54,900



Ford/Steiger FW60, 285 HP, 4WD, C/A, 20.8x38 (Duals), 3 REM, 10-Speed, Good Runner. \$19,800



83 JD 5820, 280 HP, 2WD, Cab, 23.1x26, 4243 Hrs., Metal Det., Hydro, Good Clean Machine with 4-Row Narrow Corn head \$26,635



'84 CASE 2294, 130 HP, MFWD, C/A, 18.4RX38, 2111 HRS., 2 REM, PS, Good Clean \$23,900



86 JD 5820, 280 HP, 2WD, Cab, 23.1x26, 3,122 Hrs., Metal Det., Hydro, Good Clean Machine \$27,545



83 SAME Jaguar 95, 95 HP, MFWD, C/A, 18.4x34 (New), 4,622 Hrs., 2 Rem., 24F/6R, Very Good \$14,900

NEW IDEEA **KUBOTA**
Nothing like it on earth!

USED EQUIPMENT

- MF 180 w/Loader
- Woods HD315 15' Wing Mower
- Woods 208 Rotary Mower
- Woods C114 Rotary Mower
- Field Queen Feed Roll Transmission
- Field Queen Main Gear Box
- Bradco 11MD2 Kubota Frame Mount Hoe
- Bush Hog 3109 9' 3 pt, excellent
- Kuhn FC 300G 10' Disc Conditioner
- Cub Cadet 7275 27 hp, 4WD w/Loader
- White 31 4WD w/Loader
- Hesston 1120 9' Windrower

LAWN & GARDEN

- Walker 16 hp 52"
- Kubota B7100 HSD w/60" Mid Mower
- Cub Cadet 2182, 21 hp, Liquid Cooled, 60"
- Cub Cadet 1863, 18hp, 48", 130 hrs
- Cub Cadet 1772 Dsl, 60"
- Simplicity Sun Star, 20 HP, 60"
- Steiner Boom Mower
- Kubota FZ 2400, 72", 4WD

STOLTZFUS FARM SERVICE

Cochranville, PA 610-593-2407

NEW/USED/RENTAL LIQUID MANURE EQUIPMENT

Spreaders

- Calumet 1500 Gal. Vacuum Tank, NEW! 14Lx16.1 Tires..... Call
- Calumet 3250 Spreader 21.5x16.1 Tires, 1997 Model.....\$7,500
- Houle 3600 Gal. Spreader 23.1x26 Tires, Brakes..... Call
- Houle 4300 Gal. Spreader Steering Axle, Brakes, 28Lx26 Tires, '98 RENTAL...\$14,900
- Houle 4800 Gal. Spreader, 28Lx26 Tires, Brakes.....\$15,900
- Houle 5350 Spreader 28Lx26, Brakes..\$16,900
- Houle 6300 Gal. Spreader
- NEW! (6) 28Lx26 Tires, Steering Axle, Brakes..... Call

Pumps

- Houle 42 ft. Lagoon Pump, '98 Rental... \$7,700
- Houle 32 ft. Lagoon Pump, '98 Rental Call
- Houle 32 Ft. Multi Purpose Lagoon Pump, RENTAL..... Call
- Houle 20" & 28" Maxi-Pump..... Call

—Financing Available—

Visit Us At The KEYSTONE FARM SHOW
January 5 & 6
Booth 234 & 235 - Memorial Hall West Wing

"We're Here To Serve You"

SNOOK'S EQUIPMENT

RD 3, Box 130, Mifflinburg, PA 17844
717-966-2736
Ask For Ernest or Dean

WE CAN HELP! CALL ANYTIME! OPEN 24 HOURS A DAY, 7 DAYS A WEEK. FREE ESTIMATES. FREE ENGINEERING. FINANCING AVAILABLE. IMMEDIATE DELIVERY. NEW & USED EQUIPMENT.

TICO IRRIGATION SYSTEMS

NEW! TICO/ABI ENGINE DRIVEN HARD HOSE IRRIGATOR

available in many sizes to automatically irrigate from 15 to 190 acres. Quickly portable from area to area. Hose lengths from 395 to 1640 ft. Variable travel speed selection with automatic constant compensation provides uniform irrigation over entire length of pass.

ACRES IRR./WK.	ACRES IRR./RUN	HOSE I.D.	IRR. LENGTH	IRR. WIDTH	OPTIMUM GPM	MODEL	PRICE
17	1.20	1.46"	571'	150'	60	Micro 44	\$5,572
48	3.8	2.1"	840'	200'	125	63AT720	\$12,280
41.5	4.9	2.1"	1150'	200'	100	63AT1050	\$16,890
48	4.6	2.38"	980'	210'	130	70AT885	\$16,990
50	4.6	2.5"	930'	210'	150	75AT820	\$17,213
68.3	5.3	3.0"	1000'	240'	200	90AT870	\$20,150
67.2	5.9	3.0"	1120'	240'	200	90AT985	\$21,950
61	7.0	3.0"	1250'	240'	180	90AT1250	\$26,350
90.7	6.8	3.75"	1180'	275'	275	110AT1050	\$27,230
90.2	7.6	3.75"	1310'	260'	275	110AT1180	\$28,700
88.7	8.3	3.75"	1440'	260'	275	110AT1312	\$33,250
135	7.8	4.00"	1200'	300'	450	120AT1050	\$33,180
176	7.5	4.20"	1150'	300'	500	125AT985	\$33,680
88.2	9.3	3.54"	1640'	260'	260	110AT1510	\$35,200
131	9.0	4.00"	1410'	280'	400	120AT1250	\$35,100
139	9.1	4.10"	1410'	300'	400	125AT1250	\$35,900

TICO IRRIGATION SYSTEMS

IRRIGATION HEADQUARTERS EASTERN UNITED STATES
RT 13, WILLIAMSTOWN, NY 13493 • PHONE (315) 964-2214 or 800-813-8046

PUMP, Don't Haul Your MANURE!

WITH TICO IRRIGATION and WRIGHT-RAIN PUMPS ... you can pump and spread in one day what would take a week to haul, regardless of field conditions. We can Design & Install All Types Of Irrigation Systems: Solid Set & Frost Control, Trickle, Giant Sprinkler, Wheel Row, Center Pivot, Hand Move, Liquid Manure (Or Waste Water Disposal). Virtually All Makes Of Used & New Pipe, Couplers, Fittings, Gaskets, Pumps & Sprinklers Are On-Hand & Ready For Immediate Delivery

2 FARM EQUIPMENT WANTED

WANTED: Grove self-unloading forage wagon, 14' or 16', good condition. 717-463-3218 Junjata Co.

WANTED: JD 2010, 2020, 2510, 2520, 3010, 3020, 4010, 4020. 609/567-0453.

WANTED: USED FORD & KUBOTA TRACTORS

Call 1-800-309-FORD (3673)
Daytime