



FARM TIRES FOR EVERY FARM NEED!

Duratorque-Bias Ply Rear Farm Tire

13.6-28 6 Ply **\$199** | 14.9x28 6 Ply **\$259**

Other Sizes Available

- Excellent roadability provided by the overlapping lugs in the center
- Traction in a wide range of sizes due to the long bar design



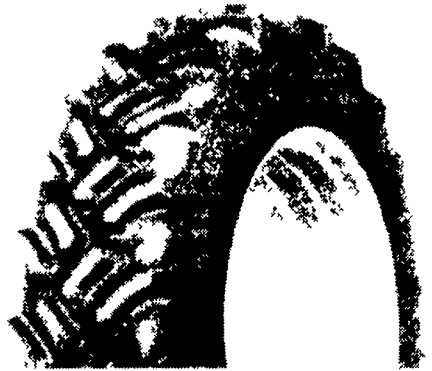
- Long wear and durability from the braced lug design
- Easy lug cleanability

DT710 Radial Goodyear's Smoothest Riding Rear Farm Tire

184R34★ **\$499⁰⁰**

Other Sizes Available

- Minimum vibration and smooth ride provided by multi element tread
- Excellent traction from the increased lug count
- Unmatched traction performance in dry soil conditions



Super Traction Radial

16.9 R30 **\$649⁰⁰**

Other Sizes Available

- Self-cleaning tread action promoted by 45 degree tread lug angles
- Up to 25% deeper than conventional R-1 tires



Dyna Torque Radial - Major Savings In Time And Fuel Costs

184R38★ **\$559⁰⁰**

Other Sizes Available



- Reduced vibration in field and road service
- Improved traction from the 3 pitch tread design

Dyna Torque II - Excellent Drawbar Pull For High Torque Tractors

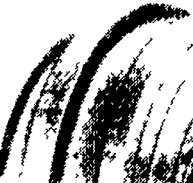
155-38 6 Ply **\$269⁹⁵**

Other Sizes Available



- Reduced vibration in field from the long bar/short bar design
- Excellent roadability

Triple Rib HD - Front Tractor Tire For Precise Steering Stability And Long Tire Life



- Improved steering in loose, cultivated soil provided by the deep, wide center ribs
- 3 rib design provides excellent steering capabilities

550-16 4 Ply TT **\$43⁹⁵**

Other Sizes Available

Farm Utility

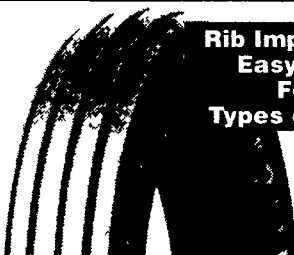


- Outstanding flotation
- Easy steering from the heavy grooved ribs

11L15 8 Ply TT **\$46⁹⁵**

Other Sizes Available

Rib Implement Tire - Easy Operation For Many Types of Equipment



- Easy rolling resistance with the 5-rib design
- Designed for dependable on/off highway service

670x15 6 Ply TT **\$49⁹⁵**

Other Sizes Available

IT510 RADIAL



- Maximum traction supplied by additional biting edges from the overlapping lug/block pattern
- Flotation and traction provided by a larger contact patch

175 LR 24 8 Ply **\$549⁰⁰**

Other Sizes Available

WORKHORSE XG RADIAL



Economy All-Weather Radial for Light Trucks Heavy Duty On/Off Road P235 75R15

\$75⁹⁵

OTHER SIZES AVAILABLE

Industrial Sure Grip

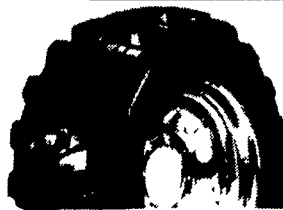


149x24 8 Ply **\$279⁰⁰**

Other Sizes Available

- Reinforced lugs for industrial use
- Aggressive tread design

Ultra Grip Lug



- Premium skid steer tire
- For heavy duty applications

10-16.5 8 Ply **\$103⁰⁰**

Other Sizes Available

LABORER

Heavy Duty Industrial Tractor Front Wheels 11L-15 8 Ply

\$89⁹⁵

OTHER SIZES AVAILABLE



Industrial Tires IT525 Bias - Improved Traction And Handling 175L-24 - 8 Ply

\$269⁰⁰

Other Sizes Available

BHM Farm Equipment
RD 1 Rt. 934 North
Annaville, PA
717-867-2211

Service Tire Truck Centers, Inc.
1601 Manheim Pike
Lancaster, PA 17604
717-569-8473

Service Tire Truck Centers, Inc.
3403 Concord Road (PIE Building)
York, PA 17402
717-755-8473

Service Tire Truck Centers, Inc.
1201 S. Cameron St
Harrisburg, PA
717-238-8473

Neatons Tire
25 East Ave
Easton, MD
1-800-317-6152

Lebanon Valley Imp. Co.
700 E. Linden St
Richland, PA
717-866-7518

Dices Tire Shop
1421 Lincoln Way
Chambersburg PA
717-264-9312

Zimmerman Farm Service
School Rd
Bethel, PA
717-933-4114

Donald B. Rice Tire Co.
909 East St
Frederick, MD 21701
1-800-950-0550

Bastian Tire Sales
R2603 Reach Road
Williamsport, PA 17701
1-800-362-5279

Bastian Tire Sales
Rt 11 & 15
Shamokin Dam, PA
1-800-326-9465

Horlacher & Sherwood
153 E Tioga
Tunkhannock, PA
717-836-1116

THE BEST TIRES IN THE WORLD HAVE **GOOD YEAR** WRITTEN ALL OVER THEM