



**86 MACK CS200**

Midliner w/18' Recondition Eby Cattle Body, 180 HP, 5 Speed, 25,000 Lb GVW, New Inspection, 100,000 Miles on Rebuilt Engine, Excellent Condition, Ready To work! Can Be Seen At

**M.H. Ebys, Blue Ball, PA**

Will Sell Body Or Truck Chassis Separately

Ask for Leon Martin or

Call **610-746-9150** after 8 p.m.

**\$13,500**

**FORD - IHC**

**POWER STROKE OWNERS!**



**Now Available  
1994 - 1997  
Power Stroke  
Remanufactured  
Electronic  
Fuel Injectors**

EXCHANGE IN STOCK

**\$ \$ EXCELLENT \$ \$  
PRICING**

**We want to be YOUR  
Fuel Injection Specialist**

**MILLER DIESEL INC.**

FUEL INJECTION & TURBO SPECIALIST

6030 JONESTOWN ROAD,  
HARRISBURG, PA 17112

(717) 545-5931  
1-800-296-5931



**Take Advantage of End-of-Year Pricing!!**



2 Available

98 Ford E350XL, 15 Pass, 6.8 V10 Triton, AT/OD, Dual A/C & Heat, Privacy Glass, Tilt, Cruise, PW, PL, Black, 19K Mi, #2818 & #2838



97 Dodge B2500 Ram Wagon SLT 8 Pass, 318 Magnum V8, AT, OD, A/C, Privacy Glass, Tilt, Cruise, PW, PL, Cassette, 29,000 Miles, #2825



97 Chevy G3500 Express Cargo w/Rcon Wheel Car Lift, Power Swing Doors, Remote Control, 5700 Vortec Auto OD, A/C, PW, PL, Tilt, Cruise, 17,000 Miles, #2839



96 Ford E350 Super Clubwagon XLT, 15 Pass, 7.3 Powerstroke Diesel, AT/OD, Dual A/C & Heat, Privacy Glass, Tilt, Cruise, PW, PL, P-seat, 18,000 Original Miles, #2823



97 Ford E250 Econoline, 5.4 Triton V8, Auto, OD, A/C, PS, PB, 8600 GVWR, 53,000 Miles, #2832



92 Ford E350 Clubwagon Chateau 460 V8 AT, OD, Dual AC & Heat, Tilt, Cruise, PW, PL, P-seat, Privacy Glass, Quad Captains/Sofa Bed #2826



CHATEAU COUNTRY!!! (6) 1994-1998 Ford E150 Clubwagon Chateau 7 Pass, Small & Large V8, Dual A/C & Heat, Privacy Glass, Tilt, Cruise, PW, PL, Power Seats, Quad Captains, All Miles & Colors, Call For Details



98, 96 Ford E350 Clubwagon XLT, 12 Passenger, 5.4/5.8 V8, AT/OD, Dual A/C & Heat, Privacy Glass, Tilt, Cruise, PW, PL, 16-29K Mi



95 Chev G30 Cargo, 350 V8, AT, OD, PS, PB, A/C, 8,600 GVWR, Cloth Seats, 30,000 Miles #2830



Specializing In Vans  
**30/40/45/48/50/55/60**  
Auto Sales  
770 W Main New Holland, PA 17557  
717-354-3199 • 717-355-0625 FAX  
Toll Free 1-877-999-VANS (8267)  
Many Other Vans In Stock

**Appalachian Manufacturing, Inc.**

330-222-2468



20,000# G V W Oil Bath Axle  
10K Dual Tandem Trailers - Spring Assist Ramps  
Pintle Pull, 18x5, Dovetail \$4,750  
Gooseneck, 20x5 \$5,000



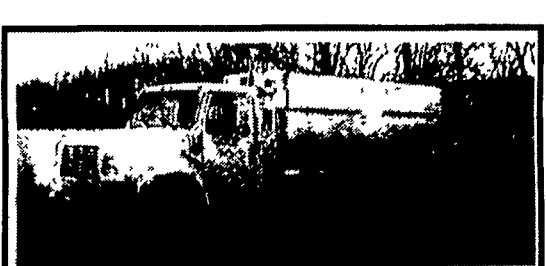
24' Gooseneck, 4' dovetail, 1-12,000# G V W, 6,000# axels w/easy lube, electric brakes, 7 50-16 tires, breakaway kit, ramps w/pressure treated deck, standard  
12,000 GVW \$2,995  
14,000 GVW \$3,195



16' Car Hauler, diamond plate deck with W/D rings, self storing ramps, 7,000# G V W, elect brakes, both axels 82" between wheel wells, breakaway kit incl  
16' Car Trailer \$1,495 18' Car Trailer \$1,645



21' Low Profile, 10,000#, axel w/easy lube, elect brakes, pressure treated deck, 10,000# G V W gooseneck \$3,100  
Bumper pull \$2,950



**90 INTERNATIONAL 4700 DT 360,**  
Turbo Diesel, 5-Spd., A/C, 24,000 GVW  
**\$13,900**  
CALL 717-326-3130

**Mack**

**Used Trucks**

Includes 200,000 Mile Engine Warranty,  
All Trucks Have Been Run on Dyno.  
1994-1995 E7-350 RTLO14610B 10 Spds.,  
DS404 - 3.9OR on Air, Steel Disc Hub Pilot,  
295/75R 22.5 192 WB, 42" Highrise,  
440,000 Miles

1993 Mack CH, E7-350 Engine, 9-Speed Fuller,  
Air Ride Susp., 192" WB,  
Steel Hub/Pilot on Low Pro 22.5

**ONE HERE & READY**  
To Put Out on LEASE  
1999 Isuzu NPR 14 Ft.  
Supreme Van Body,  
Call For Details  
Ask For Leasing Dept

**LESHER Mack**  
SALES & SERVICE

2700 Cumberland Sts. Lebanon, Pa.  
(Route 422 West) 17042

**717-273-4535**

**Bergey's**  
AUTOMOTIVE EXCELLENCE SINCE 1924

**TRUCK CENTER**

(Rt. 113) 446 Harleysville Pk.  
Souderton-Franconia, PA.

CALL TOLL FREE **(877) 237-4393**

**24 HR PARTS & SERVICE MON. - SAT.**

SHOP OUR WEBSITE [bergeys.com](http://bergeys.com)

**(215) 721-3400**

**GMC COMMERCIAL VOLVO**

**SHOWROOM HRS**  
M-F 9am to 9pm  
Sat 9am to 4pm  
CLOSED SUNDAY

**READY TO ROLL ! · 877-237-4393**

**'98 GMC C8500 DUMP TRUCK**  
#60515, C8500, Green Exterior, 25,950 lb GVW, 210 hp 3126 CAT Diesel, 6-Speed Manual, Air Conditioning, Thiele 10' x 7' Steel Dump w/Double Acting Hoist **\$42,730**

**READY TO GO ! · 877-237-4393**

**'98 GMC C8500 CHASSIS**  
#60526, GMC C8500 Chassis, 210 hp CAT 3126 Diesel, 6-Speed, 25,950 lb GVW, 157" Wheel Base, 84" CA, White, Ready to Upfit, And Much More! **\$34,900**

**UPFIT ALLOWANCE ! · 877-237-4393**

**'98 GMC SIERRA HD3500 CHASSIS**  
#60509, GMC HD3500, 6.5 liter Turbo Diesel, 5-Speed, 15,000 lb GVW, 84" CA, A/C, White, PRICE INCLUDES \$900 UPFIT ALLOWANCE! **SALE PRICE! \$23,900**

**UPFIT ALLOWANCE ! · 877-237-4393**

**'98 GMC SIERRA 3500 CAB CHASSIS**  
#60401, GMC TK3500, Diesel Engine, Automatic, 84" CA, Snow Plow Prep Kit, Will Take 10' Dump Body, PRICE INCLUDES \$900 UPFIT ALLOWANCE! **\$24,900**

**CLEAN UNIT ! · 877-237-4393**

**'95 GMC K3500 DUMP STAKE BODY**  
#4716, '95 GMC K3500, 6.5 liter Turbo Diesel, 5-Speed, 12' Dump Stake Body, 8' Snow Plow w/PA, 60,000 Miles, White Exterior, More! **SALE PRICE! \$18,900**

**GOOD CONDITION ! · 877-237-4393**

**'87 GMC TOPKICK W/STAKE BODY**  
#4567, 366 Cubic In Gas Engine, 5-Speed, 2-Spd Rear Axle, 18' Heavy-Duty Platform, 29,000 lb GVW, Dark Green, GOOD CONDITION, New PA Inspection! **\$5,900**

**A REAL STEAL ! · 877-237-4393**

**'93 WHITE GMC WIA64TES TRACTOR**  
#73647, 3406 CAT 400 hp, RTX-14170B, 12,000 lb Front Axle, Eaton BS402 Rear Air Suspension, 209" WB, Dual 150's, 415,000 Miles! **PRICED TO SELL! \$36,900**

**READY TO GO ! · 877-237-4393**

**'87 UD WITH 18' MORGAN REEFER**  
#77377, 1987 UD with 18' foot Morgan Reefer Body, TK-MDI w/Electrc Standby, Diesel, Automatic Trans, 30,000 lb GVW, 220,000 Miles, More! **\$15,900**

**GOOD CONDITION ! · 877-237-4393**

**(2) MORGAN DRY FREIGHT BODIES**  
#72142 & 74176, Morgan Dry Freight Aluminum Van Bodies, 22' x 79" with Maxon RC3, 3,000 lb Rail Gates **\$2,500 without gate \$3,450 with gate**