

**NY Phil
Frozen Eggs
ATLANTA, GA.**

NOVEMBER 27, 1998

CORRECTIONS AS NOTED

EASTERN REGION FROZEN EGGS,
NOVEMBER 27, 1998. FEDERAL-
STATE

Prices were unchanged. The market tone was about steady. Demand declined this week as Thanksgiving business dissipated. Supplies were generally adequate. Liquid and frozen eggs (ingredients included) processed under federal inspection in the Eastern region for the week ending November 21, 1998 was ***unchanged*** from a week ago, and ***4%*** more than the same week last year.

WHOLESALE SELLING PRICES
(CENTS PER POUND IN 30 LB. CONTAINERS)

TRUCKLOTS LTL (MIN. 25 CONT. RANGE MOSTLY RANGE
WHOLE 59-63 61-62 64-67 BLENDS
(1) TFEWR 80-95 WHITES 45-49 46-48
50-55 SUGARED YOLKS (MIN 43% SOLIDS) 79-83 80-81 84-87 SALTED YOLKS (MIN 43% SOLIDS) 75-79 77-78
80-89

**NE Chicken
Parts 1&2
ATLANTA, GA.**

DECEMBER 03, 1998

NORTHEAST BROILER/FRYER
PARTS - PART I FEDERAL-STATE

Trucklot buying activity continued disappointing with several dealers wondering where the business was. Offerings were still a struggle to place even at very attractive price levels. Movement through most retail and distributive outlets continued to puzzle dealers as first-of-the-month interest was negligible.

PRICES PAID PER POUND, ICE PACKED AND CO2 PACKED BROILER/FRYER PARTS, DELIVERED TO FIRST RECEIVERS IN POOL TRUCKLOT AND TRUCKLOT QUANTITIES.

ITEM CURRENT NEGOTIATED TRADING*

BREAST - B/S 150 BREAST - WITH RIBS 67-68 BREAST - LINE RUN 67 LEGS 29-30 LEG QUARTERS (BULK) 17 DRUMSTICKS 34-35 THIGHS 25-26 WINGS (WHOLE) 78-79 BACKS AND NECKS (STRIPPED) 12-14 LIVERS (5 POUND TUBS) 40-45 GIZZARDS (HEARTS) 55-60

**New York
Egg Market
ATLANTA, GA.**

DECEMBER 02, 1998

NEW YORK EGGS, DECEMBER 02, 1998. FEDERAL-STATE

Prices were unchanged. The market tone was generally steady. Demand was not as active and ranged light to good, better where featured. Supplies were adequate to fully adequate with mediums in the longest position.

PRICES TO RETAILERS, SALES TO VOLUME BUYERS, USDA GRADE A AND GRADE A, WHITE EGGS IN CARTONS, DELIVERED STORE DOOR, CENTS PER DOZEN.

RANGE EXTRA LARGE 88-90
LARGE 85-88 MEDIUM 71-74

**E PA & NJ
Poultry
ATLANTA, GA.**

NOVEMBER 30, 1998

SOUTHEAST HEAVY LIVE HEN REPORT, NOVEMBER 30, 1998. FEDERAL-STATE

Majority prices were unchanged to slightly higher when compared to a week

earlier. Demand was moderate to good as plants were usually back on normal processing schedules. Offerings were still adequate for full trade needs. Undertone was steady.

HEAVY TYPE HENS (7 POUNDS AND UP) *

FINAL PRICE, CENTS PER LB., GENERALLY FOR SLAUGHTER THE WEEK OF 30-NOV-98

RANGE MAJORITY WTD AVG AT FARM BUYER LOADING 14.5-22 CENTS/LB. 16-20.5 17.92

* WEIGHTS UNDER 7 LBS. SUBJECT TO DISCOUNT.

**Westminster Hay
Westminster, Md.**

Tuesday, December 1, 1998

Report Supplied by Auction

ALFALFA: 1.70-3.40 BALE, 27.50 LARGE ROUND.

TIMOTHY: 1.05-3.50 BALE, 12.00-25.00 LARGE ROUND.

MIXED HAY: 1.25-3.40 BALE.

GRASS: .85-2.10 BALE, 8.00-13.00 LARGE ROUND.

BEAN STUBBLE: .60 BALE.

HAY STUBBLE: .25-1.40 BALE.

STRAW: .50-1.65 BALE.

CORN FODDER: .40-.75 BALE.

OATS: 2.65 BU.

Leinbach's Hay

Shippensburg, PA

Nov. 30 and Dec. 1

Report Supplied by Auction
94 LOADS.

ALFALFA: 50.00-160.00.

MIXED HAY: 50.00-142.00.

TIMOTHY: 43.00-102.50.

CLOVER: 65.00-95.00.

BROMEGRASS: 60.00-105.00.

ORCHARD GRASS: 56.00-90.00.

STRAW: 40.00-77.00.

EAR CORN: 77.00-82.00.

CORN FODDER: 29.00-48.00.

OATS: 2.00-2.30 BU.

MULCH: 28.00-36.00.

WOOD: 28.00-44.00 LOAD.



**CHRISTMAS
TREE & GREENS
AUCTIONS**

**TUESDAYS & THURSDAYS
10:00 AM**

**SELLING CUT TREES, B&B TREES, GREENS, WREATHS,
CEMETERY PIECES, LOG PLANTERS, PINE CONES, AND
MORE.**

PLANTS: POINSETTIAS, CHRISTMAS CACTUS & MORE.

**CRAFTS: WOODEN ITEMS, PAINTED PIECES, FLOWER
ARRANGEMENTS, ETC. SOLD IN OUR HEATED WAREHOUSE.**

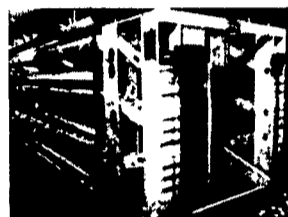
**PRODUCE: Locally Grown as well as Produce from other areas will be
sold on the same days**

ALL CONSIGNORS & BUYERS WELCOME!

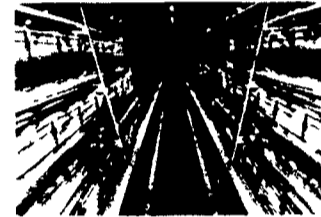
Call 610-683-7161 for more info. & directions.



**Thinking of Adding a New Building?
Need to Remodel and Older One?
Check Out Your Options with Farmer Automatic of America.**



- Multi Deck Layer Cage System**
- Automated system for feeding, watering, egg collection & manure removal
 - Provides stress free environment
 - Solid partition walls
 - Plastic coated removable floor
 - Produces more eggs per hens housed
 - Lower feed conversion and mortality rate
 - Increases profits



- Step-A-Matic Layer Cage System**
- Rugged A-Frame construction
 - Proven Multi-Deck features
 - Step rail feed through • Sold galvanized partitions
 - Plastic coated removable cage floors
 - Heavy duty manure deflector
 - Egg Collector System with top or bottom transfer
 - Egg Saver System • Stainless steel nipple drinker
 - V-Link feeding system

**MAXIMIZE YOUR PROFITS WITH
FARMER AUTOMATIC**



Contact
Sheldon Goodine
Regional Manager
PO Box 57
So. China, ME 04358
1-800-683-2634

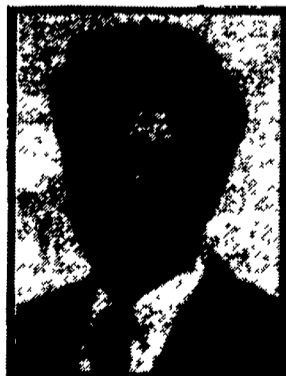


Commitment to Agricultural Industry

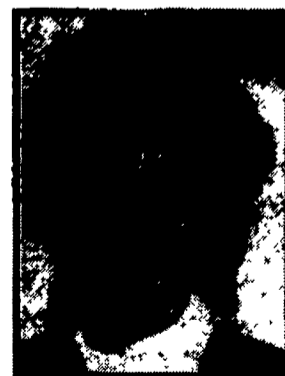
Our name alone tells you where our interests lie.
We're locally-owned and operated. We know Lancaster County and can respond with timely answers to your loan requests. Whether you need financing for buildings, land, livestock or machinery, working capital or a loan tailored to specific needs, look to the bank that is committed to your industry and has been for more than 135 years. **Bank of Lancaster County.**

At Bank of Lancaster County, we take pride in providing our customers with exceptional service targeted toward their specific financial needs. We understand your business. And, we're committed to developing long-term relationships. Our Agricultural Lenders are available to meet with you at a time that fits your schedule . . . on your farm.

Why not give Stan Michonski or Mary Henry a call?
We're looking forward to talking with you about banking on your terms . . . on your farm.



Stan Michonski
Assistant Vice President
Agricultural Lending
Call (717) 581-6020



Mary Henry
Assistant Vice President
Agricultural Lending
Call (717) 464-4520



Bank of Lancaster County, N.A.
The Better Bank.



Member F.D.I.C.