

Farmers Ready To Vote

(Continued from Page A1)

farmer who has been spearheading the effort find a way to bring the southern tobacco buyers back into Pennsylvania said they have indications but no specific promise the buyers will come if a farmer-controlled auction is started. Right now, the project hangs in the balance because even though the crowds at the recent meetings were large and a good number of farmers

immediately became members of the cooperative, the total to date is still only a small part of the 1,100 tobacco farmers with a total of 20 million pounds of tobacco to sell. Both type 609 and 41 tobacco are involved in the marketing effort.

"We should have more members to make it work," Balmer said. "But farmers are sitting on their farms waiting for the buyers to come and no one is showing up. We must make the attempt with the support we have. We have so little to lose and if we can find a way to get this tobacco sold, we have a lot to gain."

Balmer has said much of the work on the project to date has been voluntary. If the project should be dropped the relatively small expense to conduct the effort and make the cooperative legal in Pennsylvania will be paid from the \$50 membership dues and the remainder returned to the farmers.

The deadline to become a member of the cooperative has been extended into December. Balmer said the committee hopes many farmers who have not yet joined the cause will come to the December 11th meeting, pay the dues, and vote on the question to begin an auction or not to begin an auction. Farmers who wish to become members at the meeting are asked to come a little early so the paperwork can be processed.

Not only does the loss of the tobacco market put hardship on individual farmers, the supporting agri-businesses feel the lost revenue as well. Tobacco money pays off production loans, farm mortgages, and equipment and service purchases.

About 25 percent of the county's tobacco is Type 41, cigar tobacco. Lancaster Leaf, a local company, usually buys the bulk of this crop. The remainder of the local crop is Type 609, cigarette tobacco. Balmer tells farmers to list separately the number of pounds of each type on the cooperative

If a majority of the members vote to support the marketing effort at the December 11 meeting, committee members hope to have an auction barn rented, a sales manager named, and an auction scheduled in two weeks. Balmer realizes this is more of a wishful hope rather than a realistic time table. But she wants to emphasize the serious effort leaders are ready to give the project to get the tobacco sold.

Anyone who would like more information or wants to become a member of the marketing cooperative may contact Robert Anderson, Lancaster County extension agronomy agent. Phone (717) 394-6851.

Bryant And Fetrow Join Beef Staff

MIDDLETOWN (Dauphin Co.) — Two new faces joined the Pennsylvania Beef Council this fall. Carrie Bryant joined the PBC staff as the new promotions director October 1. Her responsibilities include food service and retail programs, as well as special statewide beef marketing projects. Previously, Bryant was the marketing communications coordinator at Sire Power, Inc. of Tunkhannock, Pennsylvania. Bryant, a Penn State graduate, grew up on a dairy farm in Wayne County, PA.

Jennifer Fetrow became a

member of the PBC team on September 1. The new business manager has held previous management positions with Tractor Supply Stores and the Bon Ton department store. As business manager, her responsibilities will include maintaining the accounts for PBC and outside contracts with the American Veal Association and the Pennsylvania Cattlemen's Association, beef checkoff compliance activities, and assistance in PBC programs. Fetrow is also a Penn State graduate, with a degree in Agricultural Business Management.

Pennsylvania

Junior Jersey

(Continued from Page A19)

Services, Richard Mellinger, Dr. Seanna Brown Vet Associates, Wayne Lamont - Youngs, Robert Lash Vet. Associates, Lloyd and Denise Pease and Cairn's Agway.

Youth chairman Pat Rassau and caretakers Craig Sprout and Lee Bailey also contributed to the success of the trip.

FREE T-SHIRT
WITH EVERY MOTOR PURCHASE NEW OR USED.



ONE STOP Electric Motor Repair
3083 Mt. Pleasant Rd.
Mount Joy, PA 17552
717-653-1455
FAX 717-653-7275
ELECTRIC MOTOR REPAIR
REPAIR PARTS
NEW MOTOR SALES

Motors

- Leeson
- Baldor
- Leland Faraday
- Leeson & GE Farm Duty
- GE
- Vanguard
- Fasco

Controls

- Leeson
- Benshaw

Pumps

- Star
- Little Giant
- Hayward Pool & Spa
- Premier

Accessories

- Bases
- Carbon Brushes
- Start Switches
- Bearings
- Capacitors
- Pump Seals
- Float Switches
- Brake Kits

SERVICES

Rebuilding

- AC & DC Motors
- Forklift Motors
- Generators
- Pumps
- Gear Boxes
- Gear Motors
- Hoists

Machine Shop

- Machining
- Milling
- Grinding
- Dynamic Balancing

Special Services

- Field Service
- Electronic Board Repair
- Used Motors

Electrical Contracting

- Individual Wiring
- Equipment Installation

Rewinding

- AC & DC Motors
- Hermetics
- Generators
- Coils
- Transformers

LEBANON VALLEY ENTERPRISES, INC.
Manufacturing • Powder Coating • Precast

- X Heaviest cattle slat made in the area
- X Wet cast with 1/2" welded rebar cage
- X 6 1/2" thick throughout the entire slat
- X High Quality
- X 1 3/4" slot openings
- X Affordable Prices
- X Slow cured for extra strength

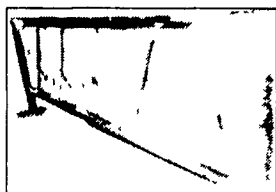


CATTLE SLATS

P.O. Box 187, Myerstown, PA 17067 • (717) 866-2030

Call us for your nearest Dealer!

FREE STALL BARN SYSTEMS
FROM HEAD-TO-HOOF BERG HAS EVERYTHING YOU NEED



DVB SERIES SELF-LOCKING PANEL
With EZ-OUT Feature

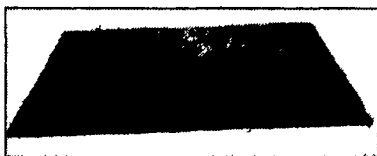


BERG FREE STALLS WITH GENUINE GATORSHIELD™



BOX AND PARLOR FANS
By Berg Sandmark

SIMPLEX COW PAD
FOR EXTRA COMFORT AND HYGIENE

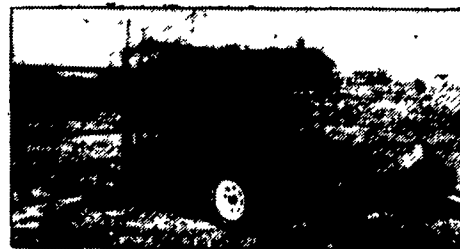


RESISTER ECONOMY MATS

BERG-BENNETT, INC.
RD. 2, BOX 1130 • WYOMING, PA 18854 • 717-265-7119 • 800-724-4866

HEAVY DUTY HOOF TRIMMING TABLES

Endorsed by the International Hoof Trimming School of Wisconsin



- 2 10-inch lift belts
- 3500 lb. axle with or without brakes

- 12-year building experience in the tables design
- 2"x2" tube frame chute
- chute measures 75"x28"x75" high
- 4" casters for cradle fold-up
- Two hydraulic cylinders for extra stability
- tool box for D.C. pump and battery protection
- manure grate to keep work area clean



- fold away side gate
- removable head board
- 45 min. video from International Hoof Trimming School of Canada

Delivery Available

THREE MODELS TO CHOOSE
1. PORTABLE 2. STATIONARY 3. 3 POINT HITCH

BERKELMAN'S WELDING
RR 7, AYLMEER, ONTARIO, CANADA N5H 2R6
(519) 765-4230