

OVER 60 YEARS IN BUSINESS!

WOLF MOTOR CO.

ROUTES 72 & 283, LANCASTER, PA 17601

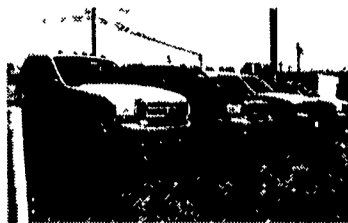
CENTRAL PA'S

FORD TRUCK DEALER

Sales Reps: Charlie Burke, Gary Brennehan,
Bill Mortenson
Dennis Asel, Mgr.

Toll Free 800-637-6612

717-299-4331



99 FORD SUPER DUTY CAB & CHASSIS
Good Selection



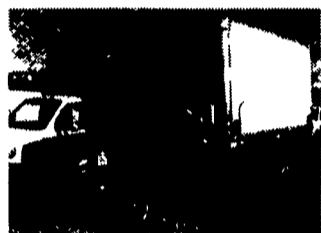
1996 FORD F250 SUPER CAB 4x4
351 V8, 5 Speed, XLT, 38,000 Miles **\$19,900**



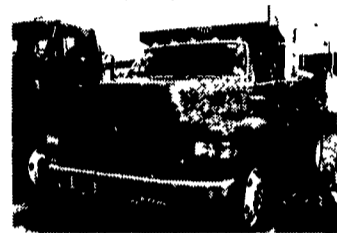
(2) 1993 FORD E350
12' High Cubes, V8, Auto **\$11,900 Each**



1992 GMC 6500
366 V8, Auto, 19,000 GVW, 14' Van Body, 80,000 Miles **\$14,900**



96 FORD F450
Diesel, Auto, XLT Pkg., 14' Flatbed w/Van Body, 100,000 Miles **\$18,900**



1999 FORD F800
26,000 GVW, 10' Dump, 190 HP Diesel, Auto **\$39,750**



BOWERS

USED CARS INC.

Route 30 West of Abbottstown, PA
7015 York Rd. **717-624-7072**



94 DODGE RAM 350 DUALY SLT LARAMIE
Cummins Diesel Loaded High Miles **\$10,500**



89 CHEVY SILVERADO 3500 DUALY
454 V8 Loaded **\$7,995**



87 OLDS, 88 ROYALE
4 Dr, V6, Loaded, 76,000 Miles, Mint Cond **\$3,995**



93 CHEVY SILVERADO 1500 4X4 SUBURBAN
Loaded, High Miles **\$13,900**



93 FORD F250 XL 4X4
8600 GVW Meyer Power Angle Snow Plow 351 V-8, Auto PS PB AC 99,000 Miles **\$11,900**



89 FORD F350
Cab & Chassis, 4x4 Dually 460 V-8 PS PB, 4 Speed **\$7,995**



86 TRACK TRUCK 4 Cyl Jeep
Eng Hydstatic Trans Ski Low Low Hours **\$14,900**



88 CHEVY 1500 4X4
V-9 4 Speed PS PB ALU Welder Bed **\$5,995**



95 DODGE DAKOTA EXT CAB 4X4 SLT V8
Auto PS PB Loaded **\$11,900**



90 JEEP WRANGLER
6 Cyl, 5 Speed, PS PB Mint Cond. **\$5,995**

FORD - IHC

POWER STROKE OWNERS!

Now Available
1994 - 1997
Power Stroke
Remanufactured
Electronic
Fuel Injectors



EXCHANGE IN STOCK

\$ \$ EXCELLENT \$ \$
PRICING

We want to be YOUR
Fuel Injection Specialist

MILLER DIESEL INC.

FUEL INJECTION & TURBO SPECIALIST
6030 JONESTOWN ROAD,
HARRISBURG, PA 17112



(717) 545-5931
1-800-296-5931



JONES BEST BUY 4X4'S TRUCKS

Largest Stocking & Selling Extended Cab GMC Dealer In 7 States

PONTIAC • HONDA
GMC TRUCK

1335 Manheim Pike, Lancaster

Prices based on straight sale, Tax & Tags extra. Trades accepted at actual cash value. Must present this ad at time of purchase for sale price.

JONES
717-394-0711



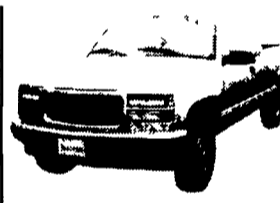
'92 GMC YUKON 4x4
AT, AC, 350, SLE #8165
Was \$15,500
SALE \$13,300



'95 JEEP CHEROKEE 4x4
AT, AC, V6, 4 DR
#8174 Was \$14,980
SALE \$13,500



90 CHEVY K15 4X4
AT, V8, AC, SLE
#8248, Was \$10,900
SALE \$9,500



'97 GMC K15 XCab 4x4
AT, AC, 4.3 Vortec, Low Mi.
#8163, Was 21,700
SALE \$19,800



'94 DODGE 1500
AT, AC, V6, Clean
#8225 Was \$11,900
SALE \$10,150



'98 GMC K25 XCAB 4x4 Diesel, 6.5 Turbo, SLE, AT, AC 13k Miles #8210 Was \$31,800
SALE \$29,200



'97 DODGE 2500 CARGO VAN
AT, V8, 38k Miles
#8216 Was \$17,400
SALE \$14,400



'97 GMC K15 4X4 X-CAB
AT, V6, AC, 24k Miles,
#8234, Was \$20,995
SALE \$18,900



'98 FORD RANGER XCAB 4x4
AT, AC, V6, XLT, 5,000 Miles
#8233 Was \$21,887
SALE \$19,875



'94 PONTIAC TRANSPORT
AT, V6, AC,
#8244, Was, \$10,900
SALE \$9,100



90 GMC K15 4X4
AT, AC, SLE,
#8228, Was \$10,000
SALE \$8,550



'94 CHEV K15 XCAB 4x4
AT, AC, 350, Silverado
#8201 Was \$18,400
SALE \$15,850



'97 GMC YUKON 4X4 4 DOOR SLE
AT, AC, 19,000 Miles
#8128 Was \$30,500
SALE \$28,950



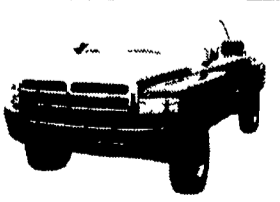
'95 MERCURY VILLAGER
GS, AT, AC, V6, 32,000 Miles
#8235 Was \$14,900
SALE \$13,100



'95 FORD WINDSTAR GL
AT, V6, AC
#8185, Was \$14,900
SALE \$12,995



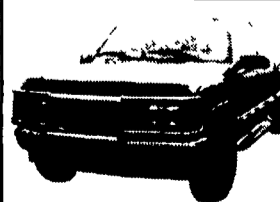
'97 CHEV ASTRO AWD
AT, AC, V6, 7 Pass.,
#8104 Was \$18,900
SALE \$17,000



97 DODGE 2500 4x4
V8, AT, AC, 25,000 Mi #8190
Was \$21,985
SALE \$20,155



93 PLYMOUTH GRAND VOYAGER
LE, AT, AC, V6, 7 Pass.
#8196 Was \$11,500
SALE \$9,500



'97 GMC K15 XCAB 4x4
3RD DR, AT, 350, SLE
#1.8229 Was \$23,900
SALE \$22,055



'97 CHEVY S10 XCAB 4X4
AT, AC, V6, 3rd Door,
#8102, Was \$18,885
SALE \$17,350