

92 Ford 4 Dr. 4x4 Turbo Diesel, 1 Ton, New 5 Spd. Trans. w/2 Spd. Splitter, 109,000 Mi., Very Good and Strong.  
**717-656-8531**



'80 International Diesel Dump w/Util. Boxes, 5 Ton, 5 Spd., No CDL, Exc  
**\$8,500**  
**215-536-9239**

## HUNTER KEYSTONE PETERBILT LP

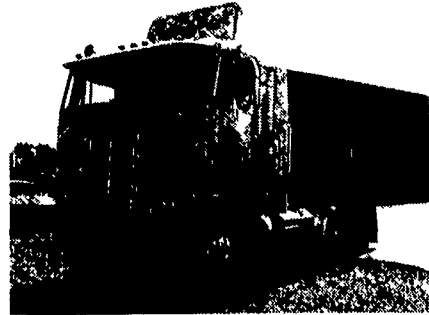


1467 Manheim Pike • Lancaster, PA 17604

717 299-6630 • 800 243-2458



91 International, 8100 Eng., L 110 Cummins, 7 Speed Trans., 12,000# Front, 23,000# Rear Axle, Spring Susp., Air Brakes.



84 Peterbilt 362 Cummins, 350 HP, 13 Speed; Air Ride Susp. w/Tag Axle



80 IHC 2275S Tractor, Cummins 350, 10-Speed, 148" WB, Spring Suspension, 11/22.5 Rubber, Very Clean



87 Kenworth T600, Cummins-400, 9 Spd. Trans., 4.44 Ratio, 210" WB, Air Ride



1994 INTERNATIONAL 9400 TT Detroit 60, 350 hp, 9 spd., 40K Spicers on Air Ride, 42" Sleeper Stock #1157 \$17,900 Call Us With Your Needs

### CLOSE OUT MILITARY TRUCK PARTS ENGINES, TRANSMISSIONS, TRANSFERS, AXLE SHAFTS, MUFFLERS, WINCHES

Ask for Herb



1992 KENWORTH TT w/60" Sleeper and Wet Line, 350 Detroit, 9 Speed, 40K Rears on Air Ride, 22.5 Lo Pros, Stk #1164 \$25,900



1985 FREIGHTLINER TT, Day Cab, 310 Cat w/Jake, 9 Speed, 40K Rears on Air Ride, 24.5 Spokes, Air Ride Cab, Nice Stock #1139 \$7,900



1985 INTERNATIONAL 1600 w/16' Van Body, 6.9 Diesel, Automatic, 22,500 GVW, Low Mileage, Stk.#1155 \$5,900



1989 CHEVROLET C30 Cube Van 14', 350 Gas, Automatic, 10,000 GVW, Great Runner, Stk #1119 \$4,500



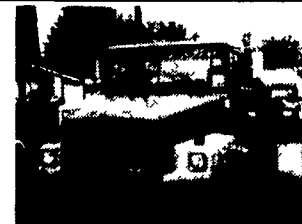
1994 FREIGHTLINER TT, Walk In, 400 HP Detroit w/Jake, 9 Speed, 40K Eatons on Air Ride, Stk #1162 \$31,900



1970 MACK DM685S, 10 Yd Mixer, 237 Maxi, 6 Speed, 44 Mack Rears, Well Maintained, Stk 1096 \$8,900



1988 FORD CARGO, w/ 22' Van Body & Liftgate, 7.8 Ford Diesel, 5 Speed, PS, 29,500 GVW, Good Unit, Stk #1095 \$5,900



1990 WHITE GMC SA TT, 290 Detroit, RT11609A, RS23-180 Rockwell Rear, 22.5 Spokes, PS, Stk #1132 \$9,900



1977 MACK R686ST, 300 Maxi, 5 Speed, 38 Mack Rears on Camelback, 20" Radials, Spokes, PS, Great Runner, Stk.#1102 \$8,900

## WILLIAM H. WESSELS USED CARS



95 Jeep Cherokee Sport, 5 Speed, 98,207 Miles  
**\$8,990**



94 Dodge Cargo Caravan V6, Auto, PS, No AC, 48,207 Miles  
**\$7,990**



96 Chevy Tahoe LT 350, V8, 4x4, 36,207 Miles  
**\$25,900**



93 GMC Safari XT AWD, 8 Passenger, V6, Auto, 106,000 Miles  
**\$7,990**



92 Dodge Ram 350LE, 12 Passenger, Dual AC, Nicely Equipped, 114,207 Miles  
**\$7,995**



87 Chevy 12 Pass. Van, V8, Auto, No AC  
**\$3,990**



95 Chevy K2500, DIESEL, 4x4, Suburban, Barn Doors, Cloth, 1 Owner, 94,000 Miles  
**\$20,900**



92 Chevy Silverado K1500 350 V8, Auto, AC, PS, 104,207 Miles  
**\$9,900**



97 Dodge Caravan 5 Drs., V6, Nicely Equipped, 48,812 Miles  
**\$15,900**



94 Chevy K-Blazer, 4x4, 350 V8, Auto, AC, 84,000 Miles  
**\$15,900**



86 Ford F350 12' Stake Dump, 6 Cyl., Manual, Local Trade  
**\$4,990**



95 GMC 2500, 358 V8, Auto, Design To Haul Auto Glass  
**\$6,990**



93 GMC Enclosed Utility Bucket Truck, 350 V8  
**\$14,900**



97 Plymouth Grand Voyager, V6, Auto, 17,400 Miles  
**\$16,900**



94 Chevy K1500 Ex. Cab, 350 V8, Auto, AC, 81,207 Miles  
**\$15,900**



97 Ford Expedition XL, 5.4 V8, 39,907 Miles  
**\$26,990**



88 Chevy Suburban Diesel, 4x4, Dual AC, 3rd Seat, Nice!  
**\$9,900**



93 Chevy Ex. Cab 4x4 Short Bed, 350 V-8, 57,000 Miles  
**\$16,900**



1983 International 30 Passenger Bus, One Owner, Nice  
**\$4,990**



89 Chevy Suburban 4x4, 350 V-8, Auto, AC, Barn Doors, High Miles  
**\$5,990**



93 Chevy Suburban 4x4, 350 V-8, Auto., PS, PB, AC, No Rear Seat, 143,457 Miles  
**\$9,900**



91 Chevy Ex. Cab Pickup, 4x4, V8, Auto, AC  
**\$8,990**



96 Dodge Caravan, 7 Passenger, V6, Auto, 5 Drs, 77,000 Miles  
**\$10,900**



96 Ford F150 4x4 XLT, V-8, Auto, PS, PB, AC, 53,901 Miles  
**\$15,900**



87 Chevy K-5 Blazer, 350 V-8, Auto, AC  
**\$6,900**



92 GMC Work Truck, V6, Auto, PS, 48,388 Miles  
**\$5,990**



93 Jeep Grand Cherokee V8, Leather Int., CD, 113,200 Miles  
**\$11,900**



95 Jeep Cherokee 2 Dr., 4.0L, 4x4, Auto, AC, 35,207 Miles  
**\$12,900**



89 GMC 6000 12' Box Truck 454 V-8, Auto, 76,102 Miles, 19,200 GVW, Power Lift Gate  
**\$8,990**



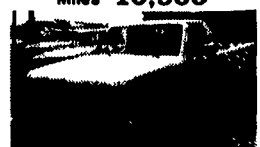
93 Mitsubishi Fuso 16' Box, Diesel, 5 Speed, 132,127 Miles  
**\$10,900**



91 Ford F150, V8 Auto, A/C  
**\$4,990**



88 Chevy K2500, V8, Auto, AC, Two-Tone  
**\$6,990**



93 Ford F150 6 Cyl., Auto, AC, 107,721 Miles  
**\$5,990**



84 GMC 6000, 8.2 Diesel, 21,200 GVW, Nice Older Truck  
**\$6,990**



90 Chevy Crew Cab, Utility Truck, 454 V8, Auto  
**\$8,990**



85 Chevy S-10 Ex. Cab, V6, Auto, 4WD, Local Trade  
**\$2,490**

## FIRESTONE MOTORS, INC.

330 S. THIRD ST. • LEMOYNE, PA 17043 • (717) 763-7721 • TOLL FREE 1-888-668-6778

## WILLIAM H. WESSELS USED CARS

811 Route 15 Dillsburg, PA  
1-800-440-4433 1-717-432-2918  
Notary Public Temporary Tags