

99 Ford F250 Cab/Chassis, Front Damage,
Runs & Drives, 5.4 V8, AT, AC, 2,000 Miles
\$12,500



95 Chevy 2500 4x4 P/U, 5.0, AT, AC, Needs
Right Bed Side & Right Door, 17,000 Miles,
Runs & Drive.....\$8,500

THOMPSON MOTORS

Rts. 412 & 212, Springtown, PA

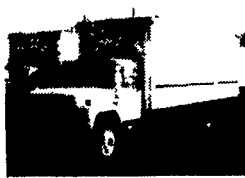
610/346-8588

Call from your fax for our "Fax On Demand" inventory list

LEED TRUCK CENTER
402 South Chiques Rd
Salunga Exit, Route 283 **717-898-1200**



(2) IVECO X220
6 cyl., Diesel 5 Spd P/S
11 600 GVW 12 C&C New Insp
Good Tires
Priced To Sell



88 IHC S1754 DT 360
Turbo 5 Spd P/S
No CDL Needed 24' Van With L/G
Very Clean
Priced To Sell



86 FORD F600
370 V8, 4 Spd., P/S Hyd Brakes
No CDL Needed, 21 900 GVW
18 Van with L/G
Only \$4,995



88 IHC S1754
DT 360 5 Spd P/S A/C No CDL
Needed 26,000 GVW, 15 C&C Insp
Clean Only 214 000 Miles
Priced To Sell

TRUCKERS

27' RATCHETS.....\$15.95
WINCH STRAPS....\$12.95
RUBBER T STRAPS...\$4.6
COMPLETE ROLL TARP SYSTEMS
TIRONIE TARPS
(800) 874-2928 • FAX: (717) 584-3127

BICYCLE CARRIERS

SAVE \$\$
FREE UPS
1-800-WEAVER-D
1-800-932-8373

LEFEVER BROS.
CHEVROLET
CHEVY TRUCKS **Geo.**

YOUR DIRECT LINE TO GENUINE GM PARTS

(800) 533-3837

When you call the number listed above, you'll reach our wholesale parts specialists, who can help you keep your GM repair work moving quickly

Ask about

- Specializing in GM Medium Duty Trucks, Current and Obsolete.
- \$500,000 Parts Inventory.
- Parts Locator for Those Hard to Find Items.
- We Ship Anywhere, Local Delivery Available.
- Experienced, Knowledgeable Personnel.

Mon., Tues., Thurs., Fri.

7:30 a.m. - 4:30 p.m.

Wed. 7:30 a.m. - 8:30 p.m.

Major Credit Cards Accepted

(717) 432-9697

Quality Dealer Since 1921

406 U.S. Rt. 15 Dillsburg, PA 17019



We want your business.



97 FORD F250 XLT 4x4,
Power Stroke Diesel, 5-Spd.,
29,000 Miles



95 FORD F250 Super Cab XLT,
Auto, 460 V8, 59,000 Miles



97 FORD F350 Crew Cab,
Power Stroke Diesel, AT, A/C,
43,000 Miles



97 FORD F150 Super Cab XLT
Lariat, 5.8L, Leather, 1-Owner,
15,000 Miles, #2285A

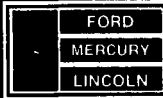


96 DODGE D100 Carvo Van 318
V8, AT, A/C, 35,000 Miles



95 FORD F150 Eddie Bauer 4x4,
302 V8, AT, A/C, 55,000 Miles
#P3842

Unless the Chapman Emblem is on Your Car or Truck... You Probably Paid Too Much!



CHAPMAN LEBANON

20th & CUMBERLAND STS. - RT. 422 WEST

9-9 DAILY 9-5 SATURDAY • CHAPMAN HOTLINE (717) 272-7671 OR 533-5293



LEADERSHIP IN SERVICE
DAILY 9-9 SAT 9-5
1-800-533-3837



1978 KW W900
350 Cum., 15 Spd.
38,000, Air Ride, P.S.
\$5,500



1987 9670
350 Cat, 13 Spd.
Air Ride
\$4,500



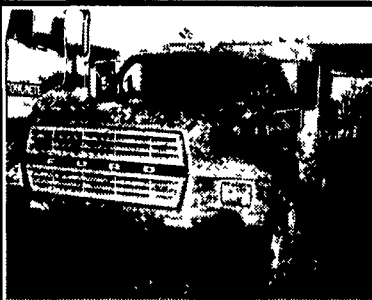
1979 L9000 Wrecker,
8V71 5x4,
Tandem, 750 Holmes,
Engine Apart
\$9,500



(2) 1988 Freightliners
Conv. Set Back Axle, 365
Cum., 9 Spd., (1) Has Air
Ride, (1) Spring
\$11,500



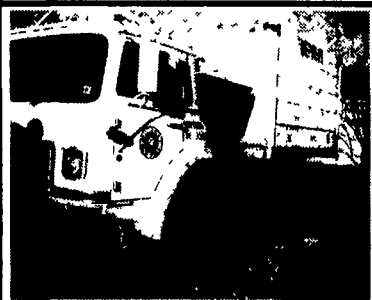
1987 Freightliner
C/O, Cat, 9 Spd.,
Spring
\$4,500



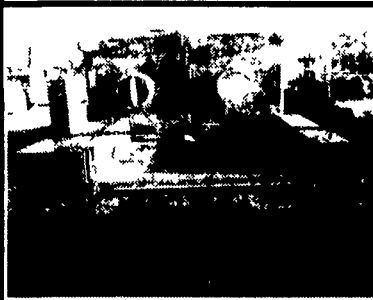
(2) 1982 F600
Utility Trucks
370 Gas, Auto,
16,000 GVW
\$3,500



1994 Isuzu NPR
16' Box, Real Clean,
bad Trans.
\$7,500



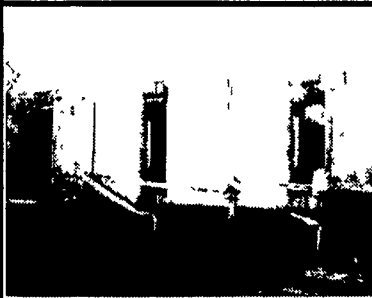
Leaf Vector
1977 Int.
Gas, R/S Steer
\$4,500



Digital Scale
60,000 Lb.
\$2,500



1987 GMC Bus
36 Pass., 8.2 Detroit,
Auto
\$2,500



(14) Aluminum
Transfer Totters
42" x 48" x 42", Top Load,
Bottom Unload
\$300 Each

JOHN GARRANO INC.

8307 Easton Rd. (Rt. 611)

Ottsville, PA 18942

610-847-9090

Fax 610-847-5433



1994 Dodge Para
Transit Bus
Wheel Chair Lift
\$4,500