

Lancaster County Weekly Lancaster, PA Friday, Dec. 4, 1998

Table with 3 columns: This Week, Last Week, Last Year. Rows for Cattle and Calves. Includes text: CATTLE: COMPARED TO LAST WEEK'S CLOSING PRICES, SLAUGHTER STEERS AND HEIFERS SOLD

FULLY STEADY. SLAUGHTER CATTLE RECEIPTS WERE VERY LIGHT THIS WEEK AS MANY PRODUCERS AND MRKTMEN WERE BUSY WITH THE OPENING OF DEER SEASON. DEFINITE MARKET STRENGTH WAS NOTED ON THE FEW HIGH CHOICE AND PRIME CATTLE THAT WERE AVAILABLE THIS WEEK.

50.25-53.25. SELECT 1-2 1055-1565 LBS. 46.25-49.75. STANDARD 1-2 1015-1500 LBS. 39.75-45.00.

SLAUGHTER HEIFERS: HIGH CHOICE AND PRIME 2-4 1150-1410 LBS. 59.75-61.85. CHOICE 2-3 1100-1390 LBS. 58.75-62.50, FEW HIGH DRESSING 1-2 UP TO 68.25. SELECT AND LOW CHOICE 2-3 1040-1350 LBS. 53.50-58.50. SELECT 1-3 850-1140 LBS. 50.75-54.00. HEIFERETTES: FEW CHOICE 3-4 1000-1440 LBS. 49.50-55.00.

SLAUGHTER COWS: BREAKERS 75-80% LEAN, OVER 1400 LBS., BULK 34.75-39.25, LOW DRESSING 32.50-36.75; BONERS 80-85% LEAN, OVER 1200 LBS., BULK 33.25-37.25, LOW DRESSING 30.00-34.00; LEAN (HI-YIELD) 85-88% LEAN, OVER 1200 LBS. BULK 31.75-35.00, LOW DRESSING 29.50-32.75; LEAN 88-90% LEAN, OVER 1000 LBS. BULK 28.75-33.50, LOW DRESSING 26.75-29.50; LEAN (LIGHT WT.) 85-90% LEAN, 750-1000 LBS., BULK 26.50-31.00, LOW DRESSING 25.00-28.50.

SLAUGHTER STEERS: HIGH CHOICE AND PRIME 2-4 1070-1460 LBS. 62.00-65.35, FEW OUTSTANDING UP TO 70.00. CHOICE 2-3 1075-1440 LBS. 60.60-63.25, FEW HIGH DRESSING 1-2 UP TO 66.50. SELECT AND LOW CHOICE 2-3 1015-1495 LBS. 55.00-61.00; 1500-1665 LBS. 49.25-57.50. SELECT 1-3 900-1490 LBS. 52.00-59.00. FEW STANDARD 1-2 1005-1430 LBS. 45.00-53.50.

HOLSTEIN STEERS: FEW HIGH CHOICE AND PRIME 2-3 1330-1565 LBS. 54.75-56.50. CHOICE 2-3 1270-1610 LBS. 52.75-54.75; FEW 1625-1830 LBS. 49.50-52.50. SELECT AND LOW CHOICE 2-3 1185-1580 LBS.

SLAUGHTER BULLS: YIELD GRADE 1 1185-2050 LBS. 40.50-53.50, SEVERAL HEAVY-MUSCLED 1485-1655 LBS. 55.00-63.00; IDEAL CHAROLAIS 1755 LBS. 66.25. YIELD GRADE 2 970-2395 LBS. 35.00-44.00. BULLOCKS: FEW CHOICE 2 1040-1145 LBS. 56.00-59.50. SELECT 1-3 880-1550 LBS. 44.50-54.00.

CALVES: COMPARED TO LAST WEEK, THERE WAS NOT A GOOD COMPARISON FOR VEALERS AND SLAUGHTER CALVES LATE LAST WEEK. ALTHOUGH, PRICES FOR VEAL CALVES WERE DEFINITELY LOWER THIS WEEK AND SLAUGHTER CALVES WERE LARGELY STEADY. HOLSTEIN BULLS, FARM CALVES ENDED THE WEEK STEADY, WHILE HEIFER PRICES WERE SHARPLY HIGHER.

VEALERS: GOOD AND CHOICE 70-110 LBS. 15.00-28.00, LATE MOSTLY 15.00-23.00. STANDARD AND LOW GOOD 60-90 LBS. 10.00-20.00.

SLAUGHTER CALVES: GOOD AND CHOICE 200-350 LBS. 60.00-85.00, 350-500 LBS. 50.00-60.00. STANDARD 300-600 LBS. 35.00-45.00.

RETURNED TO FARM: HOLSTEIN BULLS 90-125 LBS. 62.00-104.00; FEW 125-150 LBS. 70.00-85.00. PLAINER TYPE BULLS 80-120 LBS. 25.00-79.00. HOLSTEIN HEIFERS 80-120 LBS. 122.00-217.00, LATE MOSTLY 150.00-217.00. PLAINER TYPE HEIFERS 70-95 LBS. 72.00-145.00.

Snyder County Produce Auction

Nov. 30 & Dec. 2, 1998

Port Trevorton, PA

Report Supplied by Auction

SQUASH: ACORN 1 1/9 BU. 4.00-5.00; BUTTER NUT 1 1/9 BU. 2.00-4.75. SPAGHETTI 1 1/9 BU. 4.00-6.00.

TOMATOES: RED SMALL TO LARGE 1/2 BU. 10.00-23.00.

TREES: 5.00-12.00.

TURNIPS: 25 LB. BAG 1.00-3.00. BROCCOLI BY THE HEAD .30 TO 1.10.

CABBAGE: GREEN 50 LBS. 5.00-6.00.

CAULIFLOWER BY THE HEAD .40-1.10.

CUCUMBERS: 1 1/9 BU. 12.00-16.00. GARLIC BY THE LB. 30 LBS. 20.00-31.00.

Randall G. Renninger

Certified Public Accountant

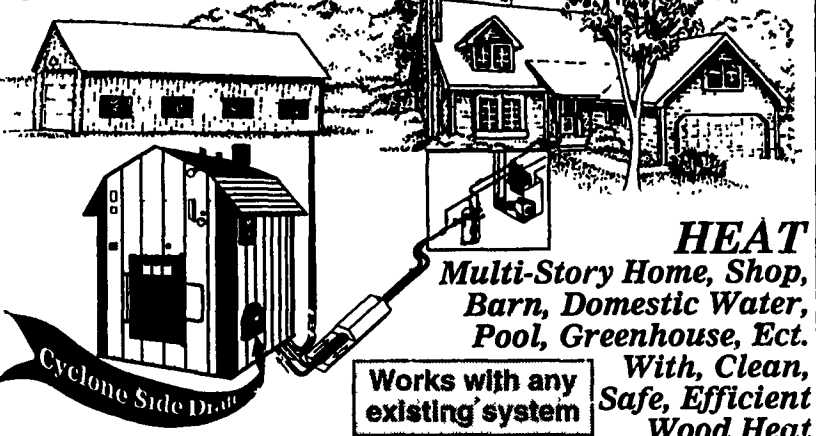
Specializing in agriculture and construction industries

"We help business people discover ways to cut costs, save taxes, and be more profitable"

Call about our FREE seminars

535 W. Orange Street, Lancaster, Pa. 17603 (717) 299-6480 + Fax (717) 299-6390

Classic CENTRAL BOILER



HEAT Multi-Story Home, Shop, Barn, Domestic Water, Pool, Greenhouse, Ect. With, Clean, Safe, Efficient Wood Heat

Works with any existing system

ELIMINATE HEATING BILLS

KENNETH V. STAUFFER

R.R. #1 Box 307, Mt. Pleasant Mills, PA 17853

PHONE (717) 539-4606 FAX (717) 539-4703

1-888-539-4606

Please Call For Free Information!

You & Your Crew are Invited to Our Annual

Beiler's Pneumatics Year End Sale & Customer Appreciation Days

Plan Now to Attend

Lots of Year End Specials! Prices Reduced Wall to Wall!

One Week Only - Mon.-Fri., - Cash & Carry

Mon, Dec 14 8 AM - 7 PM Tues, Dec 15 6 AM - 7 PM Wed, Dec 16 8 AM - 5 PM Thurs, Dec 17 8 AM - 7 PM Fri, Dec 18 8 AM - 4 PM

WEEK BEFORE CHRISTMAS - DECEMBER 14 - 18, 1998

Factory Reps on Hand - Free Samples - Coffee & Doughnuts

Tuesday, December 15, and Wednesday, December 16, will be Contractor Days!

We will open at 6:00 AM on Tuesday morning, December 15. Bring your crew for hot egg and bacon sandwiches, (from 6:00 am to 9:00 am). Coffee and donuts served all day. Super specials on stick and coil nails and Sioux, Quik-Drive, Bostitch, Emglo, Dewalt, Makita and Tech products.

Drawing for Free K5HGA-8P Emglo Air Compressor will be at 4:00 pm on Wednesday, December 16

We really appreciate your business...thank you!

We have a large selection of FREE gifts. Come and see!

Free Coffee Mug and Mini Wooden Canister Set with \$100.00 purchase! Free Coffee Mug and Hammer (fiberglass handle) with \$300.00 purchase! Free Mug or Hammer and Kuchen Set or Canister Set with \$750.00 purchase!

When:

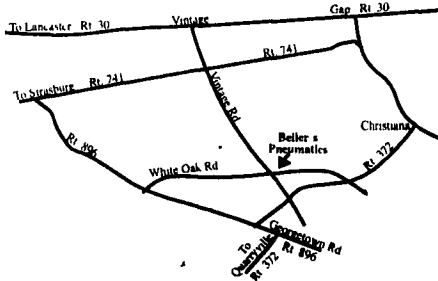
Mon., Dec 14 8 AM - 7 PM Tues., Dec 15 6 AM - 7 PM Wed., Dec 16 8 AM - 5 PM Thurs., Dec 17 8 AM - 7 PM Fri., Dec 18 8 AM - 4 PM

Mail Orders also qualify for the FREE gifts and special prices. Please see the order form for details. Orders must be postmarked no later than December 18 to receive sale prices and FREE gifts

Where:

Beiler's Pneumatics

718 Vintage Road, Christiana, PA 17509 On Vintage Rd between White Oak Rd & Rt 372 From the north, get Vintage Rd at Rt 30 at Vintage Sales Barn and go east 5 miles, cross 3 crossroads and 1 Y From the south, get Vintage Rd at 896 1 mile west of Nine Points and go north 2 miles



Special Notice!

We will be closed for inventory between Christmas and New Year.

Please write for a free sale flyer.

MARTIN'S TIRE & ALIGNMENT

We're Your Firestone Farm Tire Dealer!

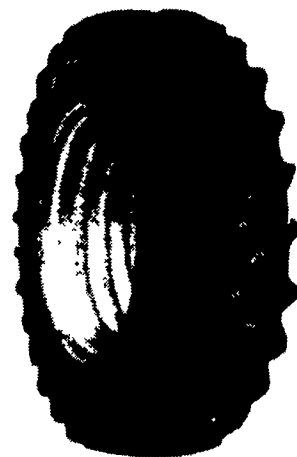
Count on us year-round for:

- A complete line of Firestone farm tires
In the field emergency repair service
Implement and light truck tires in stock too!

Call For Prices

Firestone All Traction 23°

Table with 3 columns: Tire Size, Star Rating, Price. Rows include 18.4R34, 20.8R38, 20.8R42.



Visit or call us today!

MARTIN'S TIRE & ALIGNMENT

Located in Churchtown 119 Water St., Narvon, PA 17555 717-445-4993



Planning to expand or update?

Check with Agri-Inc. where quality is our standard.



DAIRY COMPLEX

FREE STALL BARN INTERIOR



Site layout, building design & construction.

- Dairy complexes and replacement stock facilities
Horse stall barns and riding arenas
Workshop and machinery storage buildings
Timber column buildings for light commercial



AGRI-INC.

The Construction Professionals

Serving The Agriculture Industry For Over 30 Years

151 E. Farmersville Road, Ephrata, PA 17522 • (717) 354-4271

