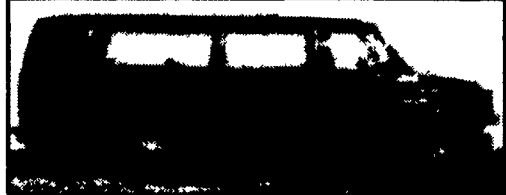
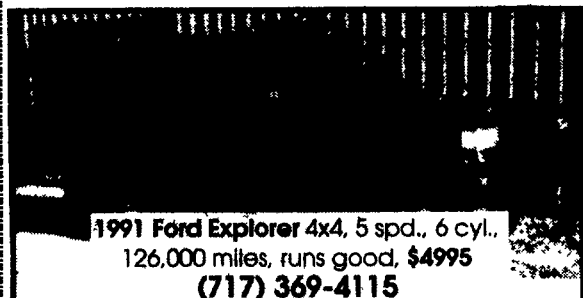


**1976 INTERNATIONAL STAKE BODY**

G.V.W. 52,000# Detroit 6-71  
With Approx. 30,000 Miles On  
Partial Overhaul, Fuller 10 Speed,  
Hendrickson Suspension Also Rebuilt.  
2 New Tires Front, New Caps On Rear.  
Need State Insp. \$3,500 O.B.O.  
Call 610-793-1500 Ext. 254  
8 A.M. to 5 P.M.



**1989 Ford Maxi Van, Black,  
Good Cond., 140,000 Mi.  
\$3,800.  
717-776-7725**



**1991 Ford Explorer 4x4, 5 spd., 6 cyl.,  
126,000 miles, runs good, \$4995  
(717) 369-4115**

**TRAILERS:** Car Mate cargo, landscape gooseneck, car haulers, dump, snowmobile, car dollies. Also parts & service. **FINK'S TRAILER SALES, RD3, 441 Pine RD. (off RT61 & I-78) Hamburg, PA 610-562-4827**  
Truck utility body, must sell, \$590 OBO. 717-299-2112

**YARNALLS Equipment Co.**

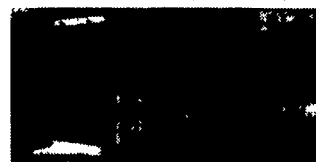
4171 Horseshoe Pike (Rt. 322), Honey Brook, PA 19344



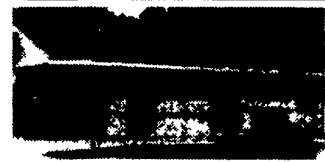
Call Today  
610-273-9200

3 Year  
Warranty On  
Trailers

Toll Free  
(888) 900-7669



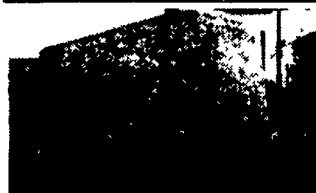
**Horse Trailers:** Silver Star, All-Aluminum, Stock, Straight, Slant, Gooseneck Available



**Pace 6x12. Dbl. Rear Doors, 32" Side Door, ATP Stoneguard, 12" Extra Height \$2,410**



**WESTERN Snow Plows, Quickly and easily removed when not in use.**



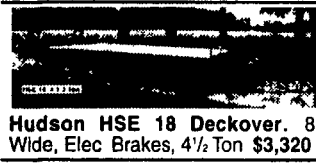
**US Cargo 6x10. Dbl Rear Door, 32" Side Door, ATP Stoneguard, 12" Extra Height \$2,410**



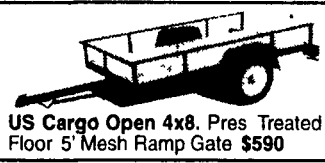
**Pace 6x12. Dbl. Rear Doors, 32" Side Door \$2,660**



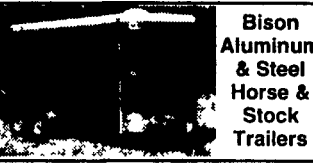
**US Cargo 5x8. Dbl Rear Door, Aluminum Fenders \$1,700**



**Hudson HSE 18 Deckover. 8' Wide, Elec Brakes, 4 1/2 Ton \$3,320**



**US Cargo Open 4x8. Pres Treated Floor 5' Mesh Ramp Gate \$590**



**Bison Aluminum & Steel Horse & Stock Trailers**

**Financing Trade Ins Repairs**

Hours: Mon., Wed., Thurs., & Fri. 8:30-5:00  
Tues. 8:30-7:00 Sat. 9:00-1:00 Or By Appointment

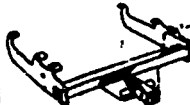
8 Miles Off Exit 22  
PA Turnpike

FINANCING TERMS AND CONDITIONS MAY VARY

Warehouse Direct To Your Door!

Free UPS  
Over \$35

**Trailer Hitches**

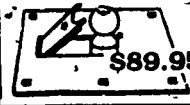


**Brake Controls**



\$59.95

**Fold-down Gooseneck**



\$89.95

**Convert - a - Ball**



\$91.95

**Ball Mounts**



\$12.95

**"PLUG-IN" Simple Wiring Hook**

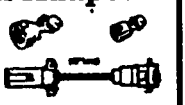


**Pintle Hooks**



5-50 Tons

**Elec. Plugs & Adapters**



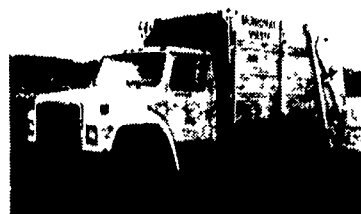
**WEAVER DISTRIBUTING 1-800-WEAVER-D**

RR2 Fredericksburg, PA 17026

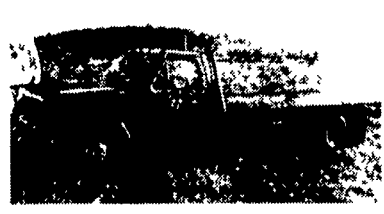
1-800-932-8373

Free Catalog

**FOR SALE**



**80 INTERNATIONAL S18**  
Detroit MT643 Diesel, Allison 4-Spd. Automatic, 62,000 Original Miles, Engine Runs Excellent - **\$3,950**



**81 FORD F350 DUALLY**  
16 ft. Steel Bed w/Winch, 351 V8, AT, 73,000 Miles, Blue ~~\$3,200~~ **Now \$4,700**

**SCHAEFFERSTOWN AUTO & TRUCK SALES**  
Rt. 501, 1 1/2 miles South of Schaefferstown  
717-949-2812

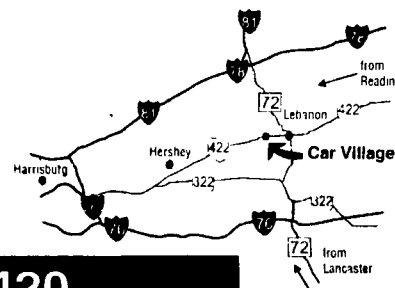
**Business Hours:**  
Mon.-Fri. 9 to 9;  
Sat. 9-4

**RTE. 422 WEST LEBANON, PA**

(Across From  
Lebanon Valley Mall)

**CAR VILLAGE**

**HEAVY DUTY TRUCKS**



**PHONE 717-274-2000 Toll Free 1-800-650-1420**



**4x4 CREW CAB DUALLY**  
99 FORD 350 SUPER DUTY  
Rare & Hard To Find, 6 Sp, Manual Trans, Powerstroke Turbo Diesel, Trailer Tow Pkg, Aluminum Wheels, All Options, Loaded XLT



**4x4 SUPER CAB 99 FORD F350 SUPER DUTY**  
XLT, Powerstroke Diesel, AT, A/C, Power Everything, 4 Door Opening, CD Player



**HEAVY DUTY DODGE 4X4 2500's**  
2 Available - Cummins Turbo Diesel  
97 Auto, 18,000 Miles, 95 Auto, 55,000 K



**FARM FLATBEDS - 95 CHEVY H.D. 3500**  
Heavy 15,000 GVW, High Output 6.5 Turbo Diesel, 5 Spd., Vinyl Seat & Floor, 9 Ft Steel Bed, Tow Pkg. - \$14,900



**SNOW PLOW PKG - 95 FORD F350 4x4**  
Heavy Duty Solid Frt. Axle Powerstroke Turbo Diesel, AT, A/C, 9000 GVW, Power Angle Western Plow, 20,000 Original Clean Miles



**96 FORD F250 4x4**  
Strong Running, Diesel Power, H.D. 4sp, A/C, Trailer Tow Pkg, Custom Wheels, Runs Great, Looks Great \$6,900



**1 TON DIESEL 4x4 POWERSTROKE**  
2 Available - 97, AT, 18,000 Miles; 97, AT, 22,000 Miles, 95, AT, 60,000 Miles, All Have Solid Frt. Axle & Remaining New Truck Warranty



**5 SP CLUB CAB, 96 DODGE 2500 4x4**  
Trailer Tow Pkg, Cummins Turbo Diesel, 5 Sp, A/C, Very Clean Inside & Out, Only 41,000 Miles



**4x4 HEAVY DUTY SUPER CAB**  
94 FORD F250 XL  
Vinyl Seat & Floor, Fuel Inj 351, AT, A/C, Lock Out Hubs, Current Insp & Ready To Go - \$13,900



**\$2,000 75 CHEVY C-60**  
366 Gas V8, 4 Sp Trans, 2 Spd Axle, 8 25x20 Rubber, 21,000 GVW, NO CDL Required



**GAS CLUB CAB - 97 DODGE 2500 4x4**  
360 Magnum, V8, Auto, A/C, Limited Slip 4.10 Gear, Heavy Duty 8800 GVW, 46,000 Miles - \$22,900



**PULLING POWER**  
**5 SP. DODGE CLUB CAB DUALYS 4X4**  
We Have 3 Extra Clean, Low Miles, Very Strong, Very Nice  
Call For Details



**ALUMINUM FLATBED**  
97 FORD SUPER DUTY  
Heavy 15,000 GVW Only 18,000 Miles, Powerstroke Diesel, 5Sp, A/C, 12 Ft. Bed, Very, Very Nice



**RACK BODY DUMP**  
96 FORD F350  
Power Stroke Turbo Diesel, H.D., 5sp, 12 Ft Dump Body, Prentil Hitch, Only 43,000 Clean Miles \$19,900



**4x4 MECHANIC'S TRUCK - 93 DODGE**  
Rare Find & Good To Own - Cummins Turbo Diesel, AT, 9 Ft. Body, Very Clean & Only 53,000 Original Miles



**SUPER CAB - CREW CAB**  
93 FORD F350 DUALLY PACIFICA CONVERSION  
7.3 Diesel, AT, A/C, Leather Captain Chairs, Alcon Aluminum Wheels, Tow Pkg., 4:10 Gears, 69,000 Clean Miles, Easy On The Eyes, Lots of Truck - Only \$19,900



**4x4 CREW CAB - 97 FORD F350**  
Picture Perfect, Only 16,000 Original Miles, Everything Like New, Powerstroke 5 Spd XLT, Check It Out



**4x4 CHEVY SUPER CAB, 95 CHEVY K2500**  
Heavy Duty 3/4 Ton 6.5 Turbo Diesel, Auto, Cheyenne Work Interior, Vinyl Floor, Tow Pkg., Great For The Farm, 67,000 Clean Miles Only \$19,900



**4x4 POWERSTROKE 97 FORD F250 HEAVY DUTY**  
Nice to Drive, Plenty of Power, What More Do You Need? 8600 GVW, Auto, A/C, Limited Slip 4.10 Gears Only \$23,900



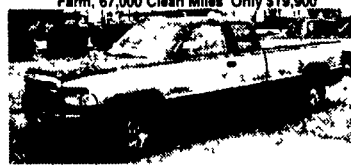
**4x4 DUMP - 95 GMC K3500**  
A Real Workhorse, High Output, 6.5 Turbo Diesel, 5 Spd., A/C, 8 Ft. Body, Pentil Hitch, Only 58,000 Miles



**ALUMINUM WALK IN**  
16 Ft. Body Chevy 350, V8, Auto, Runs Well, Very Well Maintained, Real Clean - \$8,000



**CUMMINS TURBO DIESEL**  
96 DODGE 2500 CLUB CAB  
4 Wheel Drive, Only 44,000 Miles, Trailer Tow Pkg., Heavy Duty 8800 GVW, Super Clean Inside & Out



**2 WHEEL DRIVE**  
96 DODGE 2500 CLUB CAB  
Cummins Turbo Diesel, AT, Loaded, SLT Laramie, Great Tow Machine



**\$13,900 - 92 CHEVY HEAVY DUTY**  
3/4 Ton 4x4, Runs Strong, Looks Great, High Output, 8.5 Turbo Diesel, AT, A/C, Excellent Body, Great Farm Truck