

# LEID DIESEL SERVICE

Service - Sales - Parts  
Specializing in Detroit Diesel

237 Green Hill Road, Newville, PA 17241

Phone 717-776-7725 • Fax 717-776-4127

## Parts for...

- Detroit Diesel
- John Deere Engines
- Rockford, Clutches
- Twindisk, Clutches

## Also...

- Rebuilt Exchange Engines • Used Engines • Used Parts • Gen. sets • Power units

We ship UPS Daily  
Dealer Inquiry Welcome

Belarus 250AS.....	\$3,500
AC D-15/Loader.....	\$3,200
Long 45.....	\$3,200
MF 135 Gas.....	\$4,400

## Staunton Tractor Inc.

540/885-7261

Exit 222 on I-81 in VA



"First in Synthetic Lubricants"

The most technically advanced engine protection money can buy

Full line of gas and diesel oils • gear oil • auto trans oil • hydraulic and hydraulic trans oil • compressor oil • greases

Chris R. Beller Jr.  
5420 Limeville Road  
Parkersburg, PA 19365  
717-442-8949

## LADDER TRACTOR CHAINS

MADE IN USA

TIRE SIZE	PRICED/PAIR
11.2-24,9.5-28	129.23
11.2-28,9.5-32	147.60
12.4-28	178.28
13.6-16	134.10
13.6-28,14.9-24	187.35
14.9-26,14.9-28	198.86
16.9-24,17.35/24	209.10
16.9-28,14.9-30	211.28
16.9-30	232.80
16.9-34,15.5-38	248.63
21.5-16	269.93
18.4-24,19.5-24	290.03
18.4-34	353.48
18.4-38	375.68
20.8-38	461.63
23.1-34,24.5-32	490.13
18.4-42,14.9-46	474.60

## DUO-GRIP TRACTOR CHAINS

MADE IN USA

TIRE SIZE	PRICED/PAIR
9.5-24,9.5-28	187.35
11.2-28,355/80-20	216.68
11.2-32,12.4-28	225.45
13.6-24,13.6-26,14.9-24	237.45
14.9-26	265.28
14.9-28,14.9-30	297.00
14.9-38,15.5-38	355.13
16.9-24	278.33
16.9-26, 16.9-28	258.83
16.9-30,16.9-32	317.55
17.51-24	234.75
18.4-24,19.5/24	315.38
16.9-34	344.85
16.9-38,18.4-38	386.33
18.4-34	387.60
20.8-38,20.8-42	506.74

SOUTH FORK HARDWARE SOUTH FORK, PA 18986

800-417-1314

www.tirechain.com

## We Sell

Case Combines  
Combines and  
Tractors  
Tractor Vans  
802/653-5539

## FORAGE KNIVES

JD, NH, IH, etc.  
Tungston Carbide  
Edge Knives from  
Weaver cannot be  
beat for Quality &  
Price  
Give your chopper  
chopping fever with quality  
knives from WEAVER!  
Weaver Distributing  
1-800-Weaver-D  
Fredericksburg, PA

# YEAR END DISCOUNTS

### Case 580 E 2WD Cab & Heater



UT 4087

Good Rubber, Standard Hoe, Clean

### CAT 951 B Crawler Loader



UT 4120

85 HP Rating, Approx. 14 Ton Weight, Approx. 1-1/2 Yd. Bucket, Very Good Drive Line, 3 Speed Power Shift and Reverse, U.C. 85% New, with New Shanks and Teeth on Bucket

\$16,800

### Komatsu PC-100-5 Excavator w/Cab



UT 4104

Boom length from boom pin to tip of trenching bucket teeth 282", approx. weight 13 tons, approx. 70 HP, approx 1991 Model, Good tight machine.

### 1980 Model Cat 955L Crawler with Large D6 U. Carriage



Approx. 35,000 Lb. Machine, 130 HP, 2 Yd. Bucket, New Pads, Good U.C., Motor & Torque Strong - Priced To Sell!

### John Deere 544B Articulated Loader with Cab & Heater



UT 4103

105 HP, Power Shift & Reverser, 18,500 Lb. Machine with Large Material Bucket, 105" Wide, Rated 3 Yd.

### Excellent Cond. Cat 963 Crawler Loader (Sharp)



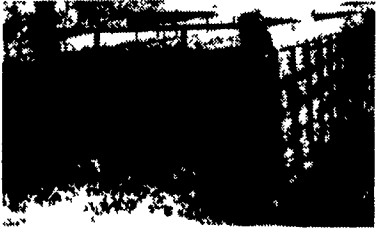
1982 3304 Cat 150 HP, Hydrostatic Drive Tested in Very Good Cond., 90% New U.C., 72" Gauge, Overall Width 91" Wide, 18" Wide Pads Like New, 92" Wide Bucket, 2.6 Yd. with New Teeth, Machine Weight Approx. 21 Ton, Good Paint and Sheet Metal Ready For Work! Quick Elite Financing Plans

### John Deere 4540C



Crawler Loader with ROPS, Good Bucket & Teeth.  
Nice - Ask For Dean!

### Choose From (2) Pre-Owned Grain Truck Bodies



1) UM 3859 - 20 Foot Omaha Standard with 52" Steel Sides with Top Hinged Tailgate (no hoist) - \$2,990.

2) UM 3975 - One 18 Foot Grain Body, Just Arrived.

Hoists and Mounting Services Available at Extra Cost - Buy a Good Clean Grain Body Today!



### Scot Contractor Dump

14' Long with Fold Down Sides, Steel Floor, Call For Options on Hoist to Mount on One of our Trucks or Yours!!!

Unassembled Price Only

Get A Year End Special Price!

For all your Truck Body needs, call Binkley & Hurst.

### Gooseneck Trailer - Only \$2,500



Tandem Axle, 16' Deck with 3' Beaver Tail, 10,000 GVW Ask For Dean

1) UM 3901 - 3 Axle 18,000 GVW Hudson Tagalong with Pintal Hitch, 24" Deck Height, Beaver Tail, PA Inspected, Only \$1,750.

2) McElrath Gooseneck, 20,000 GVW with 20' Flatbed and 5' Beaver Tail, (2) 10,000 Lb Dexter Axles, (8) 4" Straps and Winch, Used Very Little - \$2,500

3) UM 3906 - Titan Gooseneck with 20 Foot Flat Deck and 4 Foot Beaver Tail with Slide In Ramps, Electric Brakes on Both Axles, Very Good Cond. - \$2,900

4) NE 5399 - "New" McElrath Gooseneck 16,000 GVW 215-17.5 Radial Tires, with 18' Deck and 5' Beaver Tail & Flip Ramps - \$2,300

5) UM 3473 - General 20-Ton Trailer.

6) UM 3520 - 31.5x22.5 Truck Tires.

7) UM 3683 - Used Truck Pusher Axles

8) UM 3958 - 13.5x22.5 Wheel Set.

Ask For Dean

### Builders - Contractors - Excavators! Ford LN8000 Diesel w/13 Speed R.R. Trans.



With 20 Ton Air Brake Tag-along Trailer with New Brakes and Tires, Good Cond. With Case 580 SE Cab 2WD Tractor Loader Backhoe in Very Good Condition Can be purchased individually

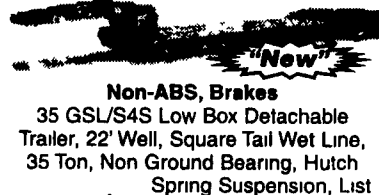
Ask Dean For Pricing & Financing Plans Available

### Price Reduced! Case 350 Crawler Loader with 4-in-1 Clam Shell Bucket



Also Rear Mount Ripper, Approx 6 to 7 Ton Weight Range, Very Inexpensive Machine, Runs Out Good Was \$6,800 Now \$5,900

### Save \$6,890 - One Only Super Year End Clearance Price On A New Eager Beaver Trailer In Stock



Non-ABS, Brakes  
35 GSL/S4S Low Box Detachable Trailer, 22' Well, Square Tail Wet Line, 35 Ton, Non Ground Bearing, Hutch Spring Suspension, List Price \$28,790 plus F.E.T. - Don't Miss!

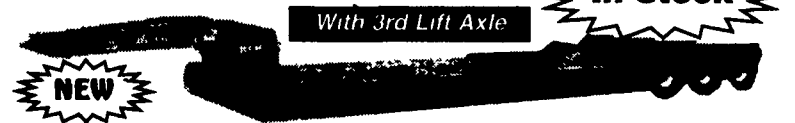
\$21,900

### Year End Discount Savings Almost \$2,000!

50GSL/3

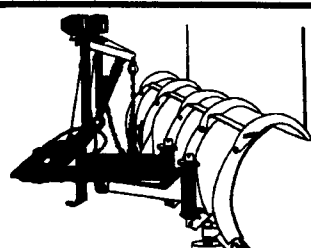
50 Ton Detachable Three Axle Air Ride.

In Stock



- CAPACITY: 100,000 Lbs
- Trailer Weight: 20,500 Lbs.
- Overall Width: 102", Length 48'
- Deck Width 102", Length 24'
- Height: 24" (Loaded)
- Tires: Twelve 255/70R22 5 (H) Radial

Was \$38,850 - Year End Discount Special Only \$36,900 & F.E.T.



### Pre-Owned Snow Plows

UM 3292 - Late Model Meyer 6-1/2' Wide in Very Good Cond., To Fit Ford Ranger Or Explorer with Power Angle, Lift Pump Incl \$2,695.

UM 3628 - Fisher 7-1/2 L Series, Elec-Hyd Unit with Power Angle and Sno-Foil, Trip Cutting Edge, Cash & Carry Price - \$2,900.

## BINKLEY-HURST BROS. INC.

Fax 717-626-0996

133 Rothsville Station Rd.  
P.O. Box 0395, Littitz, PA 17543-0395  
(717) 626-4705 1-800-414-4705

Farm Plan  
A Service of FPC Financial

Discover  
VISA

- Sweet corn harvest, 2 R SP
- JD 7700 combine 2 heads
- Asteck crop sprayer
- John Blue field sprayer w/ss tank
- Payloader, Nelson, Cummins, diesel, \$2,900
- 2 Ford dump trucks
- Super M, JD 50 tractor

(732) 946-8840

## ATTENTION FARMERS

If you have deteriorating concrete masonry or stone walls, have it repaired with GUNITE®

For Information and estimates call  
Martins Silo Repair  
(717) 445-9834

## Super Clean Backhoe Case 590

4WD, Cab Ext.,  
2400 Hrs.,  
1 Owner, 1994  
\$43,500  
Delivered

Financing Available  
Several others available

1-800-635-7505

## MASSEY-FERGUSON

- Where farmers ideas take root
- MF 184-4 Tractor
- MF 253, Excellent, 900 hrs
- Ford 545A tractor loader, 300 hours
- MF 10 baler
- NH 850 round baler
- Gehl CB 400 Harvester w/ 2 heads
- NH 790 Forage Harvester w/Heads
- NH L785 Skud Steer
- NH L565 Skud Steer, 600 Hrs.
- JD 613 Rotary Cutter

Coming In:  
NH 851 Round Baler

## NEW HOLLAND SCHREFFLER EQUIPMENT

Pitman, PA  
717-648-1120  
717-648-1811