



## HOG MARKETS



## HAY & GRAIN MARKETS

### New Holland Feeder Pigs

New Holland, PA  
Wed., November 25, 1998  
Report Supplied by USDA  
TODAY 745 HEAD  
LAST WEDNESDAY 1009  
LAST YEAR 297

TREND: COMPARED TO LAST WEEK: FEEDER PIGS SOLD 4.00-8.00 HIGHER WITH THE BEST DEMAND FOR 40-50 LB. FEEDER PIGS. SLAUGHTER BUYERS CONTINUE TO PAY GOOD PRICES FOR PIGS THAT FALL INTO THEIR SELECTED WEIGHT RANGES. AROUND 54 PERCENT OF SUPPLY RETURNED TO FEED. ALL PIGS WEIGHED ON ARRIVAL AND SOLD BY THE HUNDRED WEIGHT.

US#1-2: 55 HEAD 30-40 LBS. 25.00-32.00; 43 PKG 40-45 LBS. 43.00-48.00; 60 HEAD 50-55 LBS. 31.00-41.00; 30 PKG 59 LBS. 25.00; 99 HEAD 60-75 LBS. 25.00-33.00.

US#2: 40 HEAD 30-45 LBS. 30.00-37.00; 26 PKG 64 LBS. 29.00; 7 PKG 71 LBS. 25.00.

SLAUGHTER: 22 HEAD 16-20 LBS. 85.00-97.00; 51 HEAD 20-30 LBS. 60.00-77.00; 127 HEAD 30-50 LBS. 40.00-51.00; 48 HEAD 85-95 LBS. 23.00-25.00.

AS IS: 53 HEAD 23-100 LBS. 2.00-24.00.

ALL PIGS CONSIGNED TO WED. FEEDER PIG SALE MUST ORIGINATE FROM A QUALIFIED NEGATIVE OR MONITORED HERD.

### New Wilmington Livestock Auction Feeder Pigs

New Wilmington, Pa.  
Nov. 20, 1998  
Report Supplied by PDA

71 FEEDER PIGS  
AVERAGES: 39 LBS. PER PIG, 63.90 PER HUNDREDWEIGHT, 25.14 PER HEAD.

US 1-2 24 HEAD 40-50 LBS. 65.00-82.50; US#2 21 HEAD 35-50 LBS. 60.00-65.00; US#2-3 10 HEAD 26 LBS. 30.00; 10 HEAD 30-40 LBS. 40.00-52.50.

### New Holland Hogs

NEW HOLLAND, PA  
TUE NOVEMBER 24, 1998  
NEW HOLLAND HOG AUCTION FOR MONDAY NOVEMBER 23, 1998  
HOG RECEIPTS TODAY 901 LAST MONDAY 767 LAST YEAR 1126

BARROWS AND GILTS: Compared to last week, prices were 2.00-3.00 lower.

49-54 percent lean: 200-270 lbs 17.00-19.00 45-50 percent lean: 240-290 lbs 16.00-17.50 40-45 percent lean: 285-320 lbs 15.00-17.25

SOWS: 3.00-4.00 lower.

US 1-3: 300-500 lbs 12.00-16.00 500-650 lbs 16.00-18.00

BOARS: 300-700 lbs 5.00-6.00

### Indiana Hogs

Springfield, IL  
Wed Nov 25, 1998  
USDA-IL Dept Ag Market News  
Indiana-Ohio Direct Hog Flash  
Barrows and Gilts: Unevenly Steady.

Demand light to moderate with a moderate holiday movement. Country Plants US 1-2

230-260 LBS 12.50-14.50 Few 11.50 & 15.00 14.00-16.00 US 2-3 230-260 LBS 10.50-12.50 Few 13.00-13.50 210-230 LBS 10.00-11.00

Sows: Unevenly Steady to 1.00 Lower.

US 1-3 300-400 LBS. 8.00-11.00 400-500 LBS. 11.00-14.00 over 500 LBS. 14.00-17.00 Few over 600 lbs. 18.00

Boars: over 300 lbs. 5.00-7.00 under 300 lbs. 7.00-9.00

Preliminary estimate: 34,000

### Wolgemuth Hay

Leola, Pa.  
Wed., Nov. 25, 1998  
Report Supplied by Auction

TOTAL LOADS: 66.  
CORN: 74.00-85.00.  
MIXED HAY: 83.00-160.00.  
STRAW: 60.00-125.00.  
TIMOTHY: 100.00-170.00.  
ALFALFA: 45.00-155.00.  
GRASS: 70.00-125.00.  
CORN FODDER: 25.00.  
FIREWOOD: 10.00 AND 40.00 LOAD.  
OATS: 2.10 BU.  
SOYBEAN STUBBLE: 23.00.

### The Windmill

Penn Yan, N.Y.  
November 20, 1998

Report Supplied by Auction  
10 LOADS.  
GRASS MIX: 1ST CUTTING 40.00-76.00.  
ALFALFA GRASS: 1ST CUTTING 72.00-80.00, 2ND 120.00-130.00.  
STRAW: 75.00-80.00.  
EAR CORN: 65.00.  
SALES EVERY TUES. AND FRI., 11 A.M. SHARP.

### Diffenbach Auction Center

New Holland, Pa.  
Monday, Nov. 23, 1998

Report Supplied by Auction  
TOTAL LOADS: 127.  
ALFALFA: 87.00-190.00.  
MIXED HAY: 75.00-190.00.  
TIMOTHY: 90.00-180.00.  
ORCHARDGRASS: 100.00-130.00.  
STRAW: 65.00-150.00.  
SOYBEAN STUBBLE: 47.00.  
EAR CORN: 74.00-76.00.  
OATS: 1.80-2.00.  
FIREWOOD: 35.00-67.00.

### Kutztown Produce Auction Hay Auction

Report Supplied by Auction  
Saturday, November 21, 1998

29 LOADS.  
ALFALFA HAY: 100.00-184.00.  
TIMOTHY HAY: 82.00-90.00.  
GRASS HAY: 74.00-95.00.  
MIXED HAY: 68.00-155.00.  
HAY BE BALE: 1.60.  
WHEAT STRAW: 78.00-88.00.  
STRAW BY THE BALE: 1.95.  
FIREWOOD: 10.00-75.00 LOAD.  
SALE EVERY SAT. AT 9 A.M.

### Dewart Hay & Livestock

Dewart, Pa.  
Monday, November 23, 1998

Report Supplied by Auction  
STEERS: TOO FEW TO QUOTE.  
HEIFERS: TOO FEW TO QUOTE.  
GOOD COWS: 26.00-37.00.  
CANNERS AND CUTTERS 18.00-26.00.  
BULLS: 34.75-36.50.  
VEAL 90-190 LBS. 95.00-200.00, 70-90 LBS. 25.00-95.00.  
HOGS: 18.00-22.00.  
SOWS: 5.00-17.00.  
FEEDER PIGS: 8.00-15.00 HEAD.  
HAY: 50.00-137.50.  
STRAW: 50.00-60.00 TON.  
WOOD: 22.50-52.50 LOAD.  
OATS: 1.80 AND 1.90 BY.  
WE WILL BE CLOSED FOR HUNTING SEASON THE WEEKS OF NOV. 30 AND DEC. 14.

### Westminster Hay

Westminster, Md.  
Tuesday, November 24, 1998  
Report Supplied by Auction

ALFALFA: 1.80-3.90 BALE, 41.00 LARGE ROUND.  
TIMOTHY: 1.10-3.80 BALE, 19.00-29.00 LARGE ROUND.  
MIXED HAY: 1.50-3.70 BALE.  
GRASS: 1.00-2.60 BALE, 5.00-22.00 LARGE ROUND.  
STRAW: .80-1.60 BALE.  
STUBBLE: .25-1.30 BALE.  
CORN FODDER: .50 BALE.  
MULCH: .25-.45 BALE.  
OATS: 2.75-4.00 BU.  
FIREWOOD: 67.00-87.00 CORD.

### North Jersey Market

Hackettstown, N.J.  
Report Supplied by Auction  
Tuesday, November 24, 1998

Hay-Straw & Grain Report  
ALFALFA: 4 LOTS, 2.75-4.50 BALE.  
MIXED HAY: 14 LOTS, 1.50-3.00 BALE.  
TIMOTHY: 5 LOTS, 2.20-3.90 BALE.  
GRASS: 5 LOTS, 2.20-2.30 BALE.  
MULCH: 2 LOTS, 1.60 AND 2.40 BALE.  
WHEAT STRAW: 3 LOTS, 1.50-1.70 BALE.  
RYE STRAW: 1 LOT AT 2.40 BALE.  
EAR CORN: 1 BAG AT 6.50.  
OATS: 3 LOTS, 3.50-5.75 BAG.  
38 LOTS TOTAL

### Hay Market Summary

November 23, 1998  
Eastern Pa.

HAY & STRAW MARKET FOR EASTERN PA - (ALL HAY GOOD GRADE AND BETTER. PRICES PAID BY DEALERS AT THE FARM & PER TON.) HAY STRAW MOSTLY STEADY.

ALFALFA 85.00-130.00; MIXED HAY 70.00-140.00; TIMOTHY 70.00-130.00; STRAW 40.00-90.00, MOSTLY 60.00-80.00; MULCH 35.00-50.00, FEW TO 25.00.

SUMMARY OF LANCASTER CO. HAY AUCTIONS FOR WEEK ENDING 11/20/98. PRICES PER TON: LOADS: 234 HAY, 58 STRAW & 21 EAR CORN. ALFALFA 93.00-175.00; MIXED HAY 80.00-160.00; TIMOTHY 90.00-165.00; STRAW 75.00-120.00; EAR CORN 68.00-80.00.

SUMMARY OF CENTRAL PA HAY AUCTIONS FOR WEEK ENDING 11/20/98. PRICES PER TON: LOADS: 193 HAY, 20 STRAW & 23 EAR CORN. ALFALFA FEW TO 92.00-160.00; MIXED HAY 76.00-147.50; TIMOTHY 69.00-140.00, STRAW 80.00-122.50; EAR CORN 52.50-95.00.

### Green Dragon

November 20  
Hay, Straw & Grain  
Report Supplied by Auction

TOTAL LOADS: 70.  
MIXED HAY: 19 LOTS, 75.00-157.00.  
ALFALFA: 7 LOTS, 78.00-132.00.  
TIMOTHY: 6 LOTS, 92.00-180.00.  
STRAW: 9 LOTS, 40.00-96.00.  
EAR CORN: 5 LOTS, 73.00-75.00.  
ORCHARD GRASS: 13 LOTS, 65.00-160.00.

OATS: 3 LOTS, 1.75-2.25 BU.  
CORN FODDER: 30.00, 8.00 BALE.  
FIREWOOD: 47.00 LOAD.  
CLOVER BALEAGE: 29.00 BALE.

### Morrison's Cove Livestock Auction Hay Report

Martinsburg, Pa.  
Nov. 23  
Report Supplied by Auction  
ALFALFA: 142.50-162.50.  
GRASS: 137.50-160.00.  
TIMOTHY: 87.50-95.00.  
MIXED HAY: 80.00-102.50.  
STRAW: 77.50-95.00.  
WOOD: 35.00-42.00.  
REED'S CANARY GRASS: 135.00.  
AUCTION HELD MONDAY AT 12:30 P.M.

### Lancaster Hogs

Lancaster Stockyards  
Wednesday, Nov. 25, 1998  
Report Supplied by USDA  
HOG MARKET TODAY 300 HEAD;  
LAST WEDNESDAY 500; LAST YEAR 947.

BARROWS AND GILTS: COMPARED TO LAST WEEK, PRICES WERE 1.50 TO MOSTLY 2.00 LOWER.

49-54 PERCENT LEAN: 240-260 LBS. 16.00.

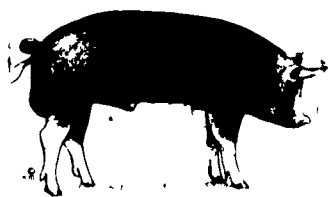
45-50 PERCENT LEAN: 220-250 LBS. 15.00.

### Carlisle Livestock Market, Inc.

FED CATTLE SALE

Tues., Dec. 1, 7PM

Exit 12 off I-81 Turn South  
Early Bird Pens  
Close 2 P.M.  
Market (717) 249-4511  
Jim (717) 249-2359



\$35.96\*  
50 Lb. BAG

New New

EXCEL 20-20

All Milk Replacer

(Medicated Neo-Terramycin)

- EXCEL Mixing
- EXCEL Growth
- EXCEL Quality

\* Price Includes 4% Cash Discount Paid 10 Days.

PENNFIELD GRAIN BANK

Prices Week Of 11/30/98

Corn \$2.46 Bu  
Soybeans \$5.40 Bu  
Barley \$1.75 Bu

- Use Grain "Same As Cash"
- Prices Updated Weekly
- Grain Back-Hauling
- No Storage Charges When Applied To Feed Purchases
- Yearly Statement of Grain Transactions Available

CUSTOMER SERVICE DEPT  
OPEN 24 HOURS

1-800-995-0333

pennfield feeds



### INDEX

Four Sections

### COLUMNS

Now is the Time..... A10  
On 'Being A Farm Wife..... B 3  
Taking Time..... B 4  
Family Living Focus..... B 5  
All Gardens..... B11  
Ida's Notebook..... B11  
Classified Ads..... C 4, D 5

### DEPARTMENTS

Editorial..... A10  
Farm Calendar..... A10  
Futures..... A16  
Mailbox Markets..... B17, D 2  
Sale Reports..... B19  
Public Auction Register..... B22  
Business News..... D 4

### DAIRY

MD DHIA..... A23  
DHIA Focus..... A26  
Dairy Basics..... A32  
Jersey Futures Conf..... A44

### FEATURES

Scholl Orchard..... A 1  
AFO Strategy..... A 1  
Dairy & Animal Science.... A 1  
Ag Industry Banquet..... A 1  
Warren Co. Top Herds..... A22  
Am. Farm Bureau Fights... A30  
Honorary Agent..... A31  
Berks 4-H Banquet..... A36  
Aquaculture..... A39  
Hara-Vale Farm..... B 6  
York Farm Women..... B12  
Cumberland Farm Women... B15

### HOME AND YOUTH

Home On The Range B 2, B14  
Homestead Notes..... B 6  
Cook's Question Corner..... B 8  
Kids Korner..... B10  
You Ask, You Answer..... B16

HERE TODAY • HERE TO STAY  
For Buying or Selling Livestock  
Call Dunlaps at (717) 397-5136

Slaughter Cattle  
Every Monday 9:30 AM

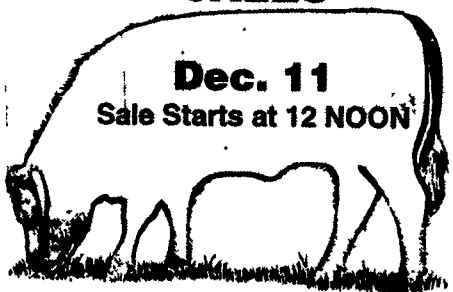
Feeder Cattle  
Sold in Conjunction with  
Monday Receipts

Receiving  
Market Hogs  
Wednesday  
6:30 AM To 11:30 AM

Sheep & Goats Auction  
Back By Popular Demand  
call Jim Hunsicker

### SPECIAL FEEDER CATTLE SALES

Dec. 11  
Sale Starts at 12 NOON



Consignments welcome

Call Butch Brown  
Glenn Hart  
or Leon Hoover

Walter M. Dunlap and Sons  
LANCASTER STOCKYARDS

An Old Line Commission Firm Dedicated to  
Livestock Marketing for the 21st Century!