

Poultry Ambassador Tours Hatchery, Mill

LANCASTER (Lancaster Co.) — As Pennsylvania Poultry Ambassador, Sarah Woodling

often teaches others about the importance of including poultry and eggs in their diets. But, some-

times, Sarah is the one who is taught.

Recently, Sarah toured Longenecker's Hatchery. John Martin, president of the hatchery, explained the history of the hatchery.

Before she entered the hatchery, Sarah pulled on protective boots and a lab coat to prevent the spread of disease. She saw white plastic bins where the chicks are held until they are ready for delivery. Sarah watched a machine separate the shell from the chicks. Later she saw the area where the chicks are debeaked and vaccinated. The eggs are kept in rooms filled with incubators that turn every few hours to keep the yolks from sticking to the shell. She also saw how the eggs are kept in bins until they are ready to hatch. In all these units, temperature and humidity are carefully monitored in order to prevent disease and other problems.

After the tour, Sarah watched a

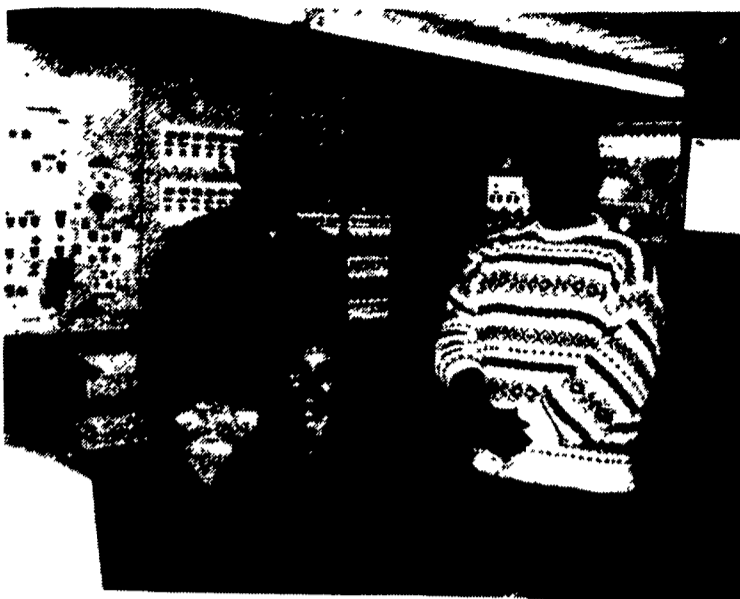
video about a layer house where the eggs are laid.

Later, Sarah toured Wenger's Feed Mill. She watched the trucks that carry corn and other raw materials for feed-making and how each ingredient is measured and carefully tested.

In the mill, Sarah saw the area

where different additives, such as vitamins and minerals, are stored. She watched the computer control room where all the ingredients and their amounts are closely monitored. She watched as a machine turned loose feed into pellets.

By taking tours such as these, Sarah is better able to answer questions that people might ask.



From left, Joe Garber, Pennsylvania Poultry Ambassador Sarah Woodling, and George Georges talk about the different functions that are monitored in the computer control room at Wenger's Feed Mill.



Pennsylvania Poultry Ambassador Sarah Woodling tours Longenecker's Hatchery with George Georges, left, and John Martin, president of the hatchery.

Wayne County Awards High Protein Breeds

HONESDALE (Wayne Co.) — The 1998 Junior Protein Breed show was held Aug. 8 at the Wayne County Fairgrounds in the large arena.

Judge was Glenn R. Tripp of Little Genesee, N.Y. There were four breeds of cattle participating in the show.

In the Jersey division placing were as follows:

JERSEY

- CLASS 206 DRY COW 1 Jessica Curtis, 2 Jennifer Eroh, 3 Theron Latourette
- CLASS 210 JUNIOR 2 YEAR OLD COW 1 Jimmie Ann Chyle, 2 Shanna Johnson
- CLASS 211 SENIOR 2 YEAR OLD COW 1 Jessica Chyle 2 Christine Wagner, 3 Samantha Meszler
- CLASS 212 JUNIOR 3 YEAR OLD COW 1 Samantha Meszler, 2 Jessica Chyle 3 Theron LaTourette
- CLASS 213 SENIOR 3 YEAR OLD COW 1 Jacob Chyle, 2 Jessica Chyle 3 Jason Chyle
- CLASS 214 4 YEAR OLD COW 1 Jimmie Ann Chyle, 2 Jimmie Ann Chyle
- CLASS 215 5 YEAR OLD COW 1 Jason Chyle
- CLASS 216 6 YEAR OLD COW & OLDER 1 Jacob Chyle, 2 Jacob Chyle, 3 Jessica Chyle
- SENIOR CHAMPION FEMALE Jacob Chyle
- RESERVE SENIOR CHAMPION FEMALE Jimmie Ann Chyle
- CLASS 220 JUNIOR OR SPRING HEIFER CALF 1 Amanda Eroh, 2 Jessica Chyle, 3 Jimmie Ann Chyle
- CLASS 221 INTERMEDIATE WINTER HEIFER CALF 1 Theron LaTourette, 2 Jacob Chyle, 3 Jacob Chyle
- CLASS 222 SENIOR/FALL HEIFER CALF 1 Jimmie Ann Chyle, 2 Samantha Meszler, 3 Jennifer Eroh
- CLASS 223 SUMMER YEARLING HEIFER 1 Jason Chyle
- CLASS 224 JUNIOR/SPRING YEARLING HEIFER 1 Brenda Swendsen, 2 Amanda Eroh, 3 Jennifer Eroh
- CLASS 225 INTERMEDIATE WINTER YEARLING 1 Jason Chyle, 2 Ryan LaTourette, 3 Samantha Meszler
- CLASS 226 SENIOR/FALL YEARLING HEIFER 1 Jennifer Eroh, 2 Christine Wagner
- JUNIOR CHAMPION FEMALE Theron

- LaTourette
- RESERVE JUNIOR CHAMPION FEMALE Jennifer Eroh
- GRAND CHAMPION FEMALE Jacob Chyle
- RESERVE GRAND CHAMPION FEMALE Jimmie Ann Chyle

GUERNSEY

- CLASS 426 SENIOR/FALL YEARLING HEIFER 1 Brooke Henderson
- JUNIOR CHAMPION FEMALE Brooke Henderson
- GRAND CHAMPION FEMALE Brooke Henderson

BROWN SWISS

- CLASS 522 SENIOR/FALL HEIFER CALF 1 Jennifer Swendsen
- CLASS 523 SUMMER YEARLING HEIFER 1 Samantha Meszler
- CLASS 524 JUNIOR/SPRING YEARLING HEIFER 1 Ashley Dix 2 Samantha Meszler
- CLASS 525 INTERMEDIATE WINTER YEARLING 1 Brenda Swendsen
- CLASS 526 SENIOR/FALL HEIFER 1 Brenda Swendsen
- JUNIOR CHAMPION FEMALE Brenda Swendsen
- RESERVE JUNIOR CHAMPION FEMALE Ashley Dix
- GRAND CHAMPION FEMALE Brenda Swendsen
- RESERVE GRAND CHAMPION FEMALE Ashley Dix

AYRSHIRE

- CLASS 606 DRY COW 1 Lisa Baudenistel
- SENIOR CHAMPION FEMALE Lisa Baudenistel
- CLASS 620 JUNIOR/SPRING HEIFER CALF 1 Amanda Eroh, 2 Jennifer Eroh
- CLASS 621 INTERMEDIATE/WINTER HEIFER CALF 1 Jennifer Eroh 2 Samantha Meszler 3 Lisa Baudenistel
- CLASS 623 SUMMER YEARLING HEIFER 1 Lisa Baudenistel
- CLASS 624 JUNIOR/SPRING YEARLING HEIFER 1 Samantha Meszler
- CLASS 625 INTERMEDIATE/WINTER YEARLING 1 Lisa Baudenistel 2 Jennifer Swendsen
- JUNIOR CHAMPION FEMALE Amanda Eroh
- RESERVE JUNIOR CHAMPION FEMALE Samantha Meszler
- GRAND CHAMPION FEMALE Lisa Baudenistel
- RESERVE GRAND CHAMPION FEMALE Amanda Eroh

GOOD FOOD OUTLET'S SPECIALS



See Our Original Line Of Golden Barrel Product Plus All Kinds Of Beans, Candies, Dried Fruit, Snack Mix, Etc. At Reduced Prices

Processors Of Syrups, Molasses, Cooking Oils, Funnel Cake Mix, Pancake & Waffle Mix & Shoofly Pie Mix

If your local store does not have it... SEND FOR FREE BROCHURE

SPECIALS FOR NOVEMBER

- VEGETARIAN ON 1.99
- BEANS ON 1.99
- GOLDEN BARREL PANCAKE & WAFFLE MIX 1.99

GOOD FOOD INC.
W. Main St. Box 160
Honey Brook, PA 19344
610-273-3776
1-800-327-4406

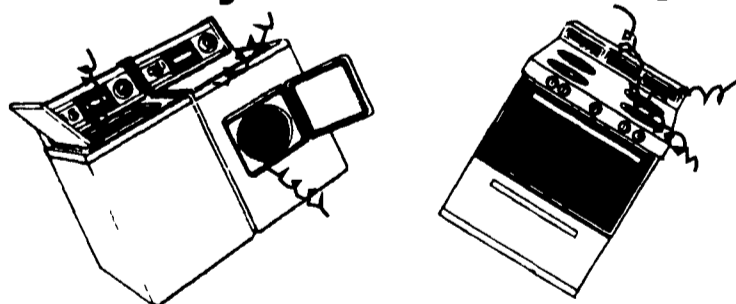
GOOD FOOD OUTLET
3614 Old Philadelphia Pike
Intercourse, PA 17534
(Just east of Kitchen Kettle Village)

L&S SWEETENERS
388 E. Main St.
Leola Pa 17540
717-656-3486
1-800-633-2676



Accepted • We Ship UPS Daily

Get Ready For The Holidays!



Does your range need new elements?
We stock surface and bake units for many brands of ranges.
Does your dryer take too long to dry?
We stock elements for most dryers. Just a reminder, make sure the vent is not blocked with lint. The lint blocks the air flow and can be a fire hazard.
We ship parts anywhere in the US. We have access to all those frequently needed parts such as motors, belts, timers, switches, range elements, and dryer elements, for most makes and models.
We have Maytag wringer washer parts available.
We cover, Berks, Lancaster, and Lebanon counties with service trucks.



The Appliance Service People
740 E. Lincoln Ave., Myerstown, PA 17067

1-800-887-7555

We accept and

Please Call for a price quote on any parts you may need.

BUY,
SELL,
TRADE
OR
RENT
THROUGH
THE
CLASSIFIED
ADS
IN
Lancaster
Farming
PHONE
717-626-1164