

# WANTED

40 to 53 flat bed trailers  
Lebanon County, PA  
**717-865-6860**



**1996 Chevrolet C1500**  
Cheyenne 305 Vortec, AT, AC, AM-FM Cass, 57,000 Miles \$9,800 Neg.  
**717-445-6024**

## FOR SALE



**87 FORD F250 4x4**  
6.9 Diesel, 4-Spd., PS, PB, 8,600 GVW, 90,000 Miles  
~~\$10,400~~ Now \$9,800



**81 FORD F350 DUALY**  
16 ft Steel Bed w/Winch, 351 V8, AT, 73,000 Miles, Blue  
~~\$5,200~~ Now \$4,700

## HUNTER KEYSTONE PETERBILT LP



1467 Manheim Pike • Lancaster, PA 17604  
**717 299-6630 • 800 243-2458**

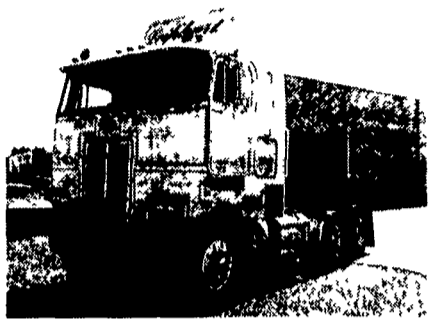


## SCHAEFFERSTOWN AUTO & TRUCK SALES

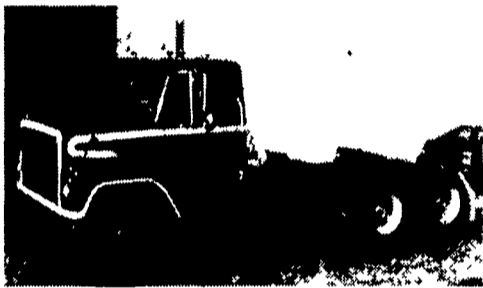
Rt. 501, 1 1/2 miles South of Schaefferstown  
**717-949-2812**



**91 International**, 8100 Eng., L 110 Cummins, 7 Speed Trans., 12,000# Front, 23,000# Rear Axle, Spring Susp., Air Brakes.



**84 Peterbilt 362** Cummins, 350 HP, 13 Speed, Air Ride Susp. w/Tag Axle



**80 IHC 2275S** Tractor, Cummins 350, 10-Speed, 148" WB, Spring Suspension, 11/22.5 Rubber, Very Clean



**87 Kenworth T600**, Cummins-400, 9 Spd. Trans., 4.44 Ratio, 210" WB, Air Ride

## Woodcrest Motors

SPECIALIZING IN TRUCKS & VANS

1200 North Reading Rd., (Rt. 272) Stevens, (Lancaster Co.) PA 17578  
**717-336-3130**



**87 FORD F350 DUMP**  
460 V8, 4 Spd., 69,000 Miles



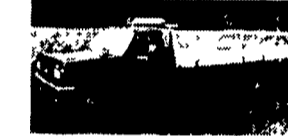
**95 FORD F350 XLT**  
351 V-8, Auto, AC, Cruise, AM/FM Cassette, 66,000 Miles, Dual Tanks, PS



**95 DODGE DAKOTA SLT**  
Ext Cab, 4x4, V8, AT, A/C, 86,000 Miles



**95 CHEVY SPORT VAN**  
V8, AT, A/C, 8 Pass, 37,000 Miles



**89 FORD F450 SUPER DUTY ROLL BACK** 7.3 Diesel, 5-Speed, A/C



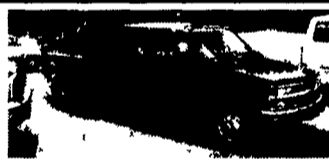
**91 CHEV 3500 DUMP**  
350 V8, 4 Spd., 35,000 Miles



**97 FORD F250 SUPER CAB 4x4**  
Power Stroke Diesel, 5-Spd., XLT, A/C, PW, PL, Alloy Wheels, Enclosed Reading Work Cap, Sandalwood, 62,000 Miles, Factory Warranty



**95 CHEV K2500 EXT. CAB 4x4**  
Heavy Duty, AT, 454 V8, A/C, PW, PL, C.T., 57,000 Miles, Maroon



**95 CHEV K3500 CREW CAB DUALY**  
4x4, 6.5 Turbo Diesel, AT, A/C, PW, PL & Lots More, Silverado Pkg., 70,000 Miles, Black C484



**95 FORD F350 CREW CAB DUALY**  
Power Stroke Diesel, 5 Spd., XL, A/C, AM/FM Cass., Chrome Wheels, Dual Tanks, 80,000 Miles, White #F772



**94 FORD F350 CREW CAB 4x4**  
XLT, 460 V8, AT, A/C, PW, PL, 50,000 Miles, Dk. Green #F743



**98 DODGE RAM 3500 QUAD CAB**  
4x4, Cummins Turbo Diesel, SLT, 5-Spd., A/C, Most Options, 12,000 Miles, Pewter



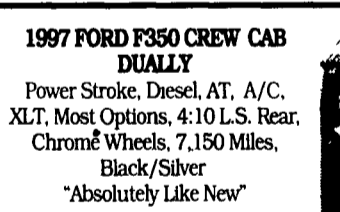
**97 DODGE RAM 3500 CLUB CAB DUALY**  
Centurian, Conversion Package, Laramie, Most Options, Cummins Diesel, AT, Black, 55K Mi.



**1999 FORD F350 CREW CAB DUALY 4x4 SUPERDUTY**  
Power Stroke, Diesel, AT, A/C, CD Player, XLT, Most Options, 4:10 Rear, 15,100 Miles, Tool Box, White



**94 FORD F350 CREW CAB DUALY**  
Power Stroke Diesel, Choo Choo Conversion, 5-Spd., Most Options, Leather, 49,000 Miles, White - Must See #F774



**1997 FORD F350 CREW CAB DUALY**  
Power Stroke, Diesel, AT, A/C, XLT, Most Options, 4:10 L.S. Rear, Chrome Wheels, 7,150 Miles, Black/Silver "Absolutely Like New"



**97 DODGE 3500 CLUB CAB, DUALY 4x4**  
Cummins Turbo Diesel AT, A/C, PS, PB, PW, PL, C. T. LE pkg., 9,000 mi., Driftwood/blk #D226



**97 CHEV K3500 CREW CAB DUALY**  
4x4, 454 Vortec Engine, Silverado, AT, A/C, Full Power, CD Player, Hitch, Black, 27,000 Miles #C481



**89 CHEVY 3500 EXT. CAB DUALY**  
350 EFI, AT, A/C, AM/FM, 51,000 Miles, Red #C486



**96 FORD F250 SUPER CAB 4x4**  
Power Stroke Turbo Diesel, Short Bed, XL Trm, 5-Speed, AC, C.T. Dual Tanks, Only 23,000 Miles, Black #F651



**99 FORD F350 CREW CAB DUALY**  
4x4 Power Stroke Diesel, AT, A/C, XLT Laramie, Most Options Alloy Wheels CD Player 4 10 L.S. Rear, 700 Miles, Black #F760



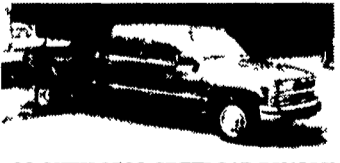
**96 DODGE RAM 2500 4x4 CLUB CAB**  
Cummins Diesel, 20,000 Mi., AT, Green & Pewter, Factory Warranty, #D252



**89 FORD F350 SUPER CAB DUALY**  
7.3 Diesel, AT w/Gear Vender, XLT, A/C, Most Options, 5th Wheel Hitch, Extra Fuel Tank, 90,000 Miles, Tan #F769



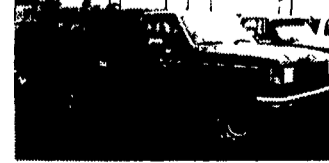
**96 DODGE RAM 2500 CLUB CAB**  
4x4, Cummins Turbo, Diesel, Laramie SLT, AT, A/C, All Power, Infinity Stereo, Tow Pkg, 33,000 Miles, Pewter #D243



**93 CHEV 3500 CREW CAB DUALY**  
Silverado, 454 V8, AT, A/C, T. C. PW, PL, Red, 70,000 Miles, #C485



**94 GMC 3500 EXT. CAB DUALY**  
4x4, 6.5 Turbo Diesel, AT, A/C, PW, PL, Sierra Pkg., 85,000 Miles, Red #G195



**88 FORD F250 4x4**  
8 ft. READING STAKE BODY  
5-Spd., 302 V8, A/C, AM/FM, PS, PB, 60,000 Miles #F605



**94 FORD F350 10ft. CONTRACTOR DUMP**  
460 EFI, AT, Dual Tanks, PS, PB, 37,400 Miles, Red #F682



**84 CHEV. C30 FLATBED DUALY**  
4x4, 4 Spd., 454 V8, AM/FM, C.T. Ready to Tow, Hard to Find, #C477



**88 FORD F450 SUPER DUTY CONTRACTOR DUMP**  
7.3 Diesel, 5-Spd, XLT, A/C, C.T. 15,000 GVW, 99,000 Miles, Grey/White #F779



**95 FORD F250 4x4**  
Power Stroke Diesel, 5-Spd., AM/FM, Bedliner, Dual Tanks, The Boss, V-Plow, 39,000 Miles, #F685

**OVER 120 TRUCKS**

## Bobby Gerhart's Truck World

2400 E. Cumberland St.  
Rt. 422  
Lebanon, PA 17042  
**717-273-7995**

Mon. - Fri. 9-6, Sat. 9-3

Preferred Warranties Available on Most Trucks

POWER STROKE

4x4

DIESEL

THE BOSS

\$6,995 4x4