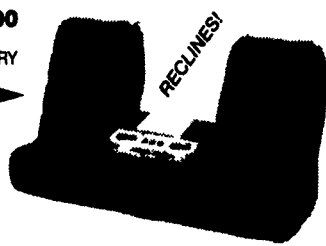


DELUXE TRUCK SEATS

Chevy, Ford, Dodge & Custom Vehicles

\$344⁰⁰
FOB FACTORY

- * American Made * Fold Down Console
- * Drink Holders * Storage Box



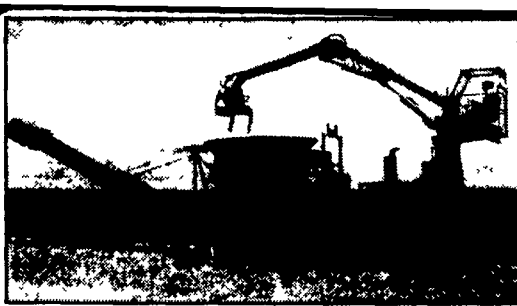
- * Fold Down Console
- * Individual Sliding Seats
- * Hidden Storage Box

Call for
Color Catalog
& Fabric Samples

\$514⁰⁰
FOB FACTORY

Emerson Seating
P.O. Box 258 - Harrisville, PA 17033

1-301-864-1079



Tub Grinder For Hire

Will Grind Bark, Brush, Pallets
Chips Just About Anything

Call for Demo
(215) 441-1133

35 TRUCKS & TRAILERS



ALL-STAR Used Trucks



**Includes 200,000 Mile Engine Warranty,
All Trucks Have Been Run on Dyno.
1994-1995 E7-350 RTLO14610B 10 Spds.,
DS404 - 3.9OR on Air, Steel Disc Hub Pilot,
295/75R 22.5 192 WB, 42" Highrise,
440,000 Miles**

1993 Mack CH, E7-350 Engine, 9-Speed Fuller,
Air Ride Susp., 192" WB,
Steel Hub/Pilot on Low Pro 22.5

ONE HERE & READY

To Put Out on LEASE
1999 Isuzu NPR 14 Ft.
Supreme Van Body,
Call For Details
Ask For Leasing Dept.



LESHER Mack SALES & SERVICE

2700 Cumberland Sts. Lebanon, Pa. 17042
(Route 422 West)

717-273-4535

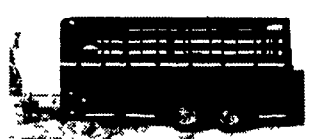


HOSTETLER

Truck Bodies & Trailers

717-667-3921

Milroy, PA - Located between Lewistown
And State College on Rt. 322 in PA.



New Design Moritz Livestock Trailers
Semi Round Front, New Sides and
Rear
6x16 7000# GVW **\$3,350**
68" x 16' Long 7000# GVW **\$3,575**

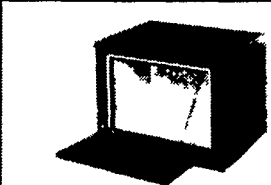


Skid Loader Trailers, 82" Between the
Fenders, 10,000# GVW
14' Long **\$2,495**
16' Long **\$2,595**
18' Long **\$2,760**

Financing & Leasing Available



Corn Pro Bumper Pull Livestock Trailer,
Corn Pro, Rubber Torsion Axles,
Treated Pine Floor
6x16 3500# Axles **\$3,350**
68" Wide x 16 Long 3500# Axles **\$3,575**
68" Wide x 16 Long 6000# Axles **\$3,895**



Tool Boxes, 36"x18"x18" **\$162**
24"x18"x18" **\$148** 42"x18"x18" **\$169**
30"x18"x18" **\$155** 48"x18"x18" **\$178**



Hostetler 4 Wheel Cart 5'x8', Plywood
Floor, Auto Type Steering, Rear Axle
Brakes, Tongue Mounted Hand Brake,
Removable Sides, 9" Tires
\$1,295



Dump Trailers
5'x8' Single Axle 5000# GVW **\$2,650**
6'x10 Tandem Axle 7000# GVW **\$3,495**
6'x10 Tandem Axle 10,000# GVW **\$3,655**



Eby Trailers In Stock, Both
Gooseneck & Bumper Pull
**CALL FOR PRICES
AND AVAILABILITY**



Hostetler 7'x12' Contractor Dump
Trailer, Dump Truck Body, with Truck
Scissor Hoist, 10,000# GVW 30"
Front with 20" Sides & Tailgate,
Heavy Duty
\$5,695



18 Deck Over Trailer, 16' Flat 2'
Dovetail with 5 Ramps, 10,000 Lg
GVW Adj Coupler
\$3,395

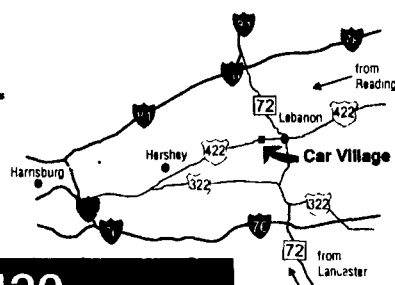
Business Hours:
Mon.-Fri. 9 to 9;
Sat. 9-4

**RTE. 422 WEST
LEBANON, PA**

(Across From
Lebanon Valley Mall)

CAR VILLAGE

HEAVY DUTY TRUCKS



PHONE 717-274-2000 Toll Free 1-800-650-1420



4x4 CREW CAB DUALLY
99 FORD 350 SUPER DUTY
Rare & Hard To Find, 8 Sp, Manual Trans,
Powerstroke Turbo Diesel, Trailer Tow Pkg,
Aluminum Wheels, All Options, Loaded XLT



4x4 SUPER CAB 99 FORD F350 SUPER DUTY
XLT, Powerstroke Diesel, AT, A/C, Power Everything,
4 Door Opening, CD Player



4x4 CREW CAB, 99 FORD SUPER DUTY
Hard To Find. But It's Here! Powerstroke Diesel,
6 Spd., Camper Pkg., Trailer Tow Pkg., Come See!



1 TON 4x4 97 FORD F350 XL
Heavy Duty Solid Front Axle, Lock Out Hubs,
Powerstroke Turbo Diesel, Auto Dual Tanks, Tow Pkg,
Vinyl Floor, 22,000 Miles, Remaining New Tk Warranty



5 SP. DIESEL SUPER CAB
97 FORD F250 4x4 HEAVY DUTY
It's Perfect - Like New But Lots Cheaper, Only 15,000
Miles, Powerstroke 5 Sp, A/C, New Tk Warranty



96 FORD F250 4x4
Strong Running, Diesel Power, H.D. 4sp, A/C, Trailer Tow
Pkg, Custom Wheels, Runs Great, Looks Great \$6,900



95 CHEVY SUBURBAN
Plenty of Room For The Growing Family & Plenty
Strong To Do So, Towing Duties, 350 V8, AT, A/C,
Tilt, Cruise, Rear Barn Doors, 40,000 Miles \$18,900



5 SP CLUB CAB, 96 DODGE 2500 4x4
Trailer Tow Pkg, Cummins Turbo Diesel, 5 Sp, A/C,
Very Clean Inside & Out, Only 41,000 Miles



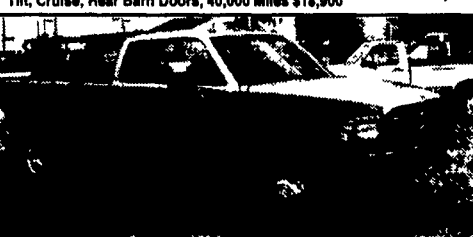
4x4 HEAVY DUTY SUPER CAB
94 FORD F250 XL
Vinyl Seat & Floor, Fuel Inj 351, AT, A/C, Lock Out
Hubs, Current Insp & Ready To Go



\$2,300 75 CHEVY C-60
366 Gas V8, 4 Sp. Trans, 2 Spd. Axle, 8.25x20 Rubber,
21,000 GVW, NO CDL Required



4x4 DUALLY, 96 DODGE CLUB CAB DUALLY
Real Nice, Real Clean, Auto Cummins, Turbo Diesel,
A/C, All Power Option, H.D. Tow Pkg., CD Player,
40,000 Miles



PULLING POWER
5 SP. DODGE CLUB
CAB DUALLY 4X4
We Have 5 Extra Clean,
Low Miles, Very Strong,
Very Nice
Call For Details



ALUMINUM FLATBED
97 FORD SUPER DUTY
Heavy 15,000 GVW Only 18,000 Miles, Powerstroke
Diesel, 5Sp., A/C, 12 Ft. Bed, Very, Very Nice



RACK BODY DUMP
96 FORD F350
Power Stroke Turbo Diesel, H.D., 5sp, 12 Ft Dump
Body, Prentil Hitch, Only 43,000 Clean Miles \$19,900



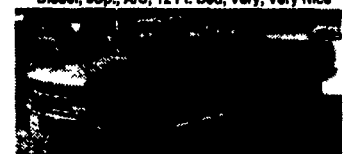
RACK BODY DUMP, 88 FORD SUPER DUTY
Real Nice, 82,000 Miles, Heavy 15,000 GVW, 400 Gas,
6 Speed Trans., Great Around The Farm.



97 FORD F250 4x4
Heavy Duty 8600 GVW, Diesel Power, 4spd, Dual Tanks,
Gooseneck & Class 3 Hitch, Runs & Drives Real Nice
\$6,900



CLEAN OUT THE BARN 82 FORD F350 DUMP TRUCK
Only 33,000 Original Miles,
Snow Plow Available If Necessary



4x4 CHEVY SUPER CAB, 95 CHEVY K2500
Heavy Duty 34 Ton 6.5 Turbo Diesel, Auto, Chyenne
Work Interior, Vinyl Floor, Tow Pkg., Great For The
Farm, 67,000 Clean Miles, Only \$19,900



**4x4 POWERSTROKE 97 FORD F250 HEAVY
DUTY** Nice to Drive, Plenty of Power, What More Do
You Need? 8600 GVW, Auto, A/C, Limited Slip 4 10
Gears Only \$23,900



NOTHING FANCY - JUST TRUCK
95 FORD F350 4x4
Heavy Duty 34 Ton Powerstroke Turbo Diesel,
Auto, A/C, Vinyl Seat & Floor, Only 38,000 Miles
New Truck Warranty \$21,900



FARM FLATBED 95 CHEVY H.D. 3500
Heavy 15,000 GVW, High Output 6.5 Turbo
Diesel, 5 Sp., Vinyl Seat & Floor, 9 Ft. Steel Bed,
Tow Pkg. 2 Available \$14,900



4x4 CHEVY HEAVY DUTY K2500 \$19,900
High Output 6.5 Turbo Diesel, AT, A/C, Heavy
Duty Tow Pkg., 4 Brand New Tires, Only
80,000 Miles, Real Clean



4x4 1 TON, 90 FORD F350
Diesel Power, AT, A/C, 9,000 GVW,
Lock Out Hubs, \$8,900



95 DODGE 2500 4X4 - \$21,900
Very Nice, Very Clean, Only 55,000 Miles,
Cummins Turbo Diesel, AT, A/C, Chrome
Wheels, A Real Good Looker