

# BESHORE & KOLLER FORD

Serving South Central PA since 1935

(717) 266-3651

98 F-150 S/Cab 4x4 XLT, 19K Miles.....	\$24,695	92 F-250, Tool Bins, Aut.....	\$8,800
97 Dodge Club Cab 4x4.....	\$24,595	91 F-250, Aut.....	\$7,900
97 F-150 S/Cab 4x4 XLT, 24K Miles ..	\$23,995	90 Econoline Van.....	\$5,900
96 Explorer XLT, 36K.....	\$21,295	86 Aerostar.....	\$2,900
95 F-150 4X2, S/CAB, 351, 54K.....	\$15,795	78 F-100 Stake Body.....	\$3,900
95 Dakota King Cab 4x4.....	\$16,295	73 F-800 Grain Body.....	\$5,900
94 F-250, 4x4 S/Cab, 49,100 Miles.....	\$17,695		

## Beshore & Koller Ford

4370 North George St.

5 Miles North of Route 30 - Manchester, PA

Hours: Monday-Thursday 8:00 am - 8:30 pm Friday 8-6, Sat. 8:30-2:00

Livestock Trailer, 8x20 Cherokee, New Brake Pads, New Floor, Good Rubber, \$2,700. (717)548-2664.

Snowplows: (2) 1997 Dodge 2500D, Myers E6 quick release. 1988 & 1978 Ford F250, Myers E47 angle frames. 8' airflow sand & salt spreader. Best offers. 717-865-3939

Sp. Const. flat trl. 3,000 GVWR heavy duty w/ramp/possum belly storage in the floor of the trailer. Unladen weight 1,735 but can be changed to 2-5/8" ball. Wooden floor, dual axles. Very-good for hauling car, farm tractor. \$2,500 will neg. 717-935-5532 or 610-593-1055

Truck utility body, must sell, \$590 OBO. 717-299-2112



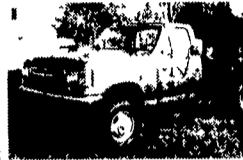
1984 Mack 24' rollback bed  
MM Weaver & Son, Leola, PA 17540  
(717) 656-2321



## BOWERS

USED CARS INC.

Route 30 West of Abbottstown, PA  
7015 York Rd. 717-624-7072



89 FORD F350  
Cab & Chassis 4x4 Dually 460 V-8 PS  
PB 4 Speed \$7,995



93 DODGE RAM 250  
Work Van V-8 Auto PS PB  
\$7,995



88 CHEVY 1500 4X4  
V-8 4 Speed PS PB ALU Welder Bed  
\$5,995



93 FORD PICKUP F150  
EX. CAB, 4x4 351 V8 Auto  
Loaded 12 Mo /12,000 Miles  
Warranty \$10,900



93 FORD F250 XL 4X4  
8600 GVW Meyer Power Angle Snow  
Plow 351 V-8 Auto PS  
PB AC 99,000 Miles \$11,900



94 CHEVY S-10 PICKUP  
V-6 Auto PS PB AC \$6,995



86 TRACK TRUCK 4 Cyl  
Jeep Eng Hydstatic  
Trans Ski Low  
Low Hours \$14,900



91 CHEVY 3500  
EX CAB 4x4 DUALY  
Silverado Loaded  
46,000 Miles \$14,900



95 DODGE DAKOTA EXT  
CAB 4X4 SLT V8  
Auto PS PB Loaded \$11,900



90 JEEP WRANGLER  
6 Cyl 5 Speed PS PB  
Mint Cond \$5,995

## Huntingdon Equipment

Rentals Available

GOOD USED EQUIPMENT

Huntingdon Valley, PA • 215-672-9667 • 1-800-543-3833 • Eddie

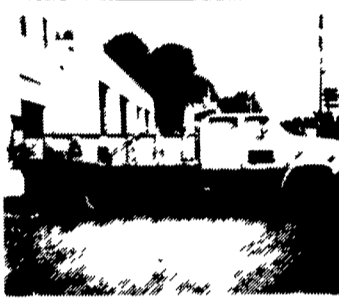
### FINAL DAYS - EVERYTHING MUST GO!

- 1980 International Tandem Axle wet line, 290 Cummins, 7 speed, inspected & ready to work, \$5,000.00

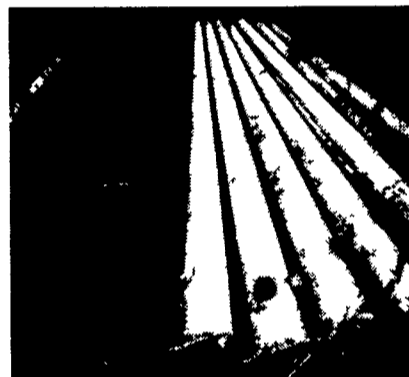
- We have Line Trucks - 10 of Them
- Gas or diesel
- Can dig a hole from 8" to 36" diameter
- 11000 lbs. to 16,000 lbs. boom capacity
- Boom height 32 feet to 42 feet
- Prices start at \$3,500.00 MUST GO



Rope For Sale by the Reel or Cut to Length - 3/4" to 2" diameter



1986 Chevy 5 Man Cab Dump, 3208 Cat - 5/2, Air Brakes. Dump with Lift Gate. Dump 14' Long, GVW 34,000 pounds



Aluminum & Steel Poles for Lights or Flag Poles. We have used lights. Call for Information



Barber Greene SA-41 Paver/Finisher Diesel - Ready to Work

#### Tank Trailers:

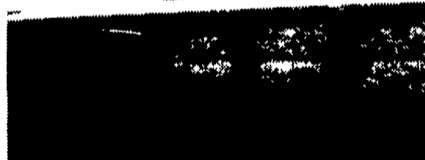
Heil - Aluminum 7,500 Gallon - 1980  
Fruehauf - Aluminum 8,250 Gallon, 1957



Material Handler Bucket Truck - 42 Bucket with Jib 1981 and 1982 Diesel Engine - Auto or Stick - Special \$9,995

### DIGGER DERRICKS/AERIAL BUCKETS/UTILITY EQUIPMENT

# "CLEANEST TRUCKS AROUND"



1995 Int. 4700 C&C, DT 466, 7 Spd. Trans., 28,960 GVW, Hyd. Brakes, 236 WB, 168 C to A, Custom Cab.....\$22,500



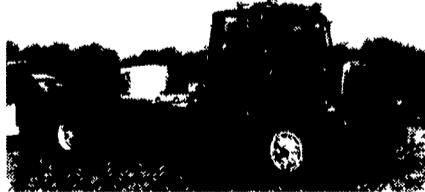
1992 Int. 4900 C&C, DT 466, 195 HP, 7 Spd. Trans, 33,000 GVW, Air Brakes, PS, 236" WB, 168 C to A.....\$19,500



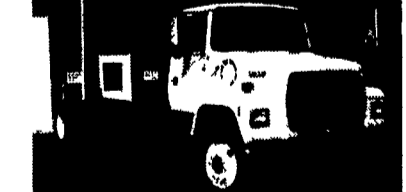
1986 INT. S1600 C&C 7.3L, 5 Sp. Trans, Hyd Brakes, Cto A 138, W.B. 208.....\$9,500



(2) 1994 Ford LN8000 C&C, 8.3 Cummins, 210 HP, 6 Sp. Trans, Air Brakes, PS, AC, 222" WB, 156" C to A, 32,700 GVW . \$25,500/Ea.



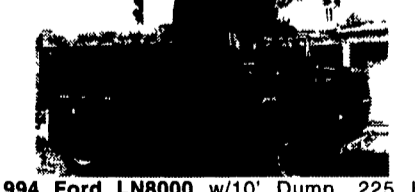
1988 Ford LN8000 C&C, 7.8L Diesel, 240 HP, 6 Spd Trans, Custom Cab, Air Brakes, PS, 33,000 GVW, WB 204", C to A 140".....\$15,500



1992 Ford LN8000 C&C, 7.8L Diesel, 210 HP, 6 Spd Trans, Custom Cab, PS, Air Brakes, A/C, 33,000 GVW, WB 246", C to A 180".....\$20,500



1984 Ford LN8000 C&C 3208T, 225 HP, 5 Sp., Trans, 2 Sp. Rear, Air Brakes, PS, Custom Cab, 204" WB, 140" C to A 35,000 GVW.....\$14,500



1994 Ford LN8000 w/10' Dump, 225 HP Cummins, 5 Spd. Trans, 2 Sp Rear, PS, AB, A/C, Pintle Hook, 33,000 GVW, 42,000 Miles, Like New, Set Up For Hauling Black Top \$42,500



1979 Ford LN8000 New 10' Dump, 3208 Cat 210, 5 Spd. Trans, 2 Spd. Rear, 35,000 GVW, Air Brakes, PS, Custom Cab.....\$13,500



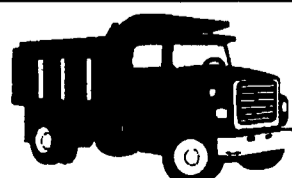
1994 Int. 4900 DT 466, 195 HP, C&C, 5 Spd Trans, Hyd. Brakes, 25,500 GVW, 218 W.B. 150 C to A, PS, AC.....\$25,500



1995 Ford LNT 9000 C&C 3306 Cat, 300 HP, 9 Sp. Trans., PS, Air Brakes, A/C, GVW 52,000 W.B. 274" C to A 210".....\$42,500



1988 Ford L8000 Dump Cent Hyd, 11' One Way Plow, Wing Plow, Spreader Hook-Up, 79,000 Miles, 7.8L-240 Hp, 10 Sp. Trans, Diff Lock, PS, Air Brakes, Needs Minor TLC \$12,500



## AL HAMILTON MANAGEMENT COMPANY

Used Medium & Heavy Duty Trucks

P.O. Box 157 • 55 Doe Run Road • Manheim, PA 17545

Phone: 717-665-7145 • Fax 717-665-2137