

## Estimated Daily Livestock Slaughter

Under Federal Inspection

November 18, 1998

	CATTLE	CALVES	HOGS	SHEEP
WEDNESDAY 11/18/98 (EST)	126,000	5,000	384,000	15,000
WEEK AGO (EST)	111,000	5,000	325,000	16,000
YEAR AGO (ACT)	132,000	7,000	376,000	17,000
WEEK TO DATE (EST)	379,000	15,000	1,154,000	43,000
SAME PD LT WK (EST)	367,000	16,000	1,040,000	43,000
SAME PD LT YR (EST)	387,000	19,000	1,100,000	48,000

### Grantsville Livestock

Grantsville, Maryland

Report Supplied by Auction

Sat., November 14, 1998

STOCK BULLS AND STEERS 200-500 LBS. 50.00-76.00.

STOCK HEIFERS 35.00-67.00.

SLAUGHTER STEERS GOOD TO CHOICE UP TO 55.50; MEDIUM TO GOOD 45.00-53.00.

HOLSTEIN STEERS GOOD 30.00-45.00; LIGHT 40.00-48.00.

SLAUGHTER HEIFERS GOOD TO CHOICE 53.00-55.00; MEDIUM TO GOOD 42.00-51.00.

BULLS: HEAVY 32.00-44.75, LIGHT 32.00-42.50.

COWS: UTILITY HOLSTEINS 32.00-37.00, CANNERS 23.00-30.00, CULLS 22.00 AND DOWN.

VEALS GOOD TO CHOICE UP TO 85.00, MEDIUM TO GOOD 36.00-55.00.

BOB CALVES: 25.00 AND DOWN.

HOLSTEIN BULL CALVES RETURN TO FARM: 90-120 LBS. UP TO 60.00.

HOLSTEIN HEIFER CALVES RETURN TO FARM, NONE AVAILABLE.

BEEF X CALVES RETURN TO FARM, UP TO 57.50.

HOGS: TOP QUALITY UP TO 38.00, HEAVY 27.00-36.00, LIGHT 25.00-34.00, FEEDER PIGS BY THE HEAD, UP TO 16.00.

SOWS: UP TO 27.00.

MALE HOGS: UP TO 20.00.

LAMBS: 70-85 LBS. UP TO 73.00; 85-125 LBS. UP TO 62.00; 30-60 LBS. UP TO 84.50; CULLS 60.00 AND DOWN.

SHEEP: UP TO 32.00.

GOATS: ALL BY THE HEAD, LARGE 40.00-75.00; MEDIUM 20.00-50.00; SMALL 10.00-35.00.

### Westminster Livestock Auction

Hagerstown, Md. November 17, 1998

Report supplied by auction

SLAUGHTER COWS: 78 HEAD, STEADY PRICES. UTILITY 32.00-37.00; HIGH DRESSING, 1 AT 41.75; CANNERS 28.00-32.00, SHELLY

28.00-DOWN.

BULLS: 7 HEAD YG#1 40.00-43.75; YG#2 37.00-40.00.

FED STEERS: 25 HEAD. HIGH CHOICE 1100-1450 LBS. 62.00-73.25; CHOICE 58.00-61.25; SELECT 53.00-57.00.

FED HEIFERS: LOW CHOICE 1100 LBS. TO 56.00.

VEAL CALVES: 132 HEAD. CULLS 85-110 LBS. 26.00-32.00; 60-85 LBS. 20.00-27.00.

FARM CALVES: STEADY. HOLSTEIN BULLS #1 95-120 LBS. 77.00-95.00; 88-94 LBS. 45.00-90.00; HOLSTEIN HEIFERS #2 90-120 LBS. TO 165.00; 75-90 LBS. 50.00-100.00; BEEF X BULLS 60.00-85.00; HEIFERS 35.00-70.00.

BUTCHER HOGS: 40 HEAD. #1&2 240-260 LBS. 20.00-23.00; 265-300 LBS. 21.00-25.00; 300-375 LBS. 18.00-25.00.

SOWS: 25 HEAD. 400-500 LBS. 13.00-17.00; 500-650 LBS. 17.00-20.00.

BOARS: 5.00.

STOCK CATTLE: 195 HEAD. STEERS MED. AND LARGE FRAME 300-50 LBS. 65.00-72.00; 500-700 LBS. 55.00-64.00; 700-900 LBS. 49.00-55.00.

HEIFERS: MED. AND LARGE FRAME 300-500 LBS. 48.00-55.00; 500-700 LBS. 45.00-53.00; 700-90 LBS. 46.00-52.00.

BULLS: MED. AND LARGE FRAME 300-500 LBS. 50.00-60.00; 500-700 LBS. 48.00-55.00; 700-900 LBS. 26.00-42.00.

SHEEP: 26.00-42.00.

LAMBS: 137 HEAD. HIGH CHOICE 100-125 LBS. 59.00-66.00, 80-100 LBS. 61.00-71.00, 60-80 LBS. 70.00-80.00.

### Morrison Cove Produce Auction

Hay Prices

Roaring Spring, Pa.

Nov. 19

Report Supplied by Auction  
ALFALFA HAY 132 50-167 50  
MIXED GRASS AND ALFALFA 132 50

TIMOTHY HAY 80 00 100 00  
ROUND BALES 87 50 TON  
FIREWOOD 40 00

SALE NEXT WEEK FRI, NOV 27 AT 1 P M

CHRISTMAS CRAFT SALE DEC 3 AT 10 A M

### HAY, STRAW & GRAIN SALE

Every Thursday at 12 NOON

Vintage Sales Stables, Inc.  
(Rt. 30, 10 miles east of Lancaster in Paradise, PA)

For info.  
(717) 442-4181 bus.  
(610) 458-8518 home

Lancaster Farming, Saturday, November 21, 1998-A15

130-160 LBS. 54.00-60.00.

GOATS: LARGE BILLIES 90.00-115.00; LARGE NANNIES 50.00-80.00; MEDIUM 40.00-60.00; SMALL 20.00-40.00.

PIGS AND SHOATS: 271 HEAD. BY THE HEAD, 20-25 LBS. 6.00-12.00; BY THE LB. 35-45 LBS. 20.00; 45-75 LBS. 20.00-32.00.

PIGS AND SHOATS: BY THE HEAD, 30-40 LBS. 10.00-12.00.

LAMBS: 40 HEAD. HIGH CHOICE 100-120 LBS. 61.00-63.50; CHOICE 90-120 LBS. 54.00-58.00; 70-80 LBS. 78.00-79.00.

### New Holland Dairy

New Holland Sales Stables

Wednesday, November 18, 1998

Report supplied by auction

142 DAIRY COWS, 218 HEIFERS, 8 BULLS. MARKET STEADY.

LOCAL FRESH COWS 510.00-1450.00.

FRESH HEIFERS 770.00-1375.00, 1 AT 1750.00.

LOCAL SPRINGERS 785.00-1335.00, UPSTATE LOADS FRESH 1300.00-1900.00.

BETTER FRESH COWS 1850.00-2000.00.

LOAD OF CANADIAN FRESH 1025.00-1850.00.

SPRINGING HEIFERS LARGE 1175.00-1475.00, SMALL 875.00-1075.00.

SHORT BRED HEIFERS 635.00-1075.00.

REGISTERED HEIFERS 1010.00-1475.00.

OPEN BREEDING AGE HEIFERS 625.00-775.00.

SMALL OPEN HEIFERS 400.00-585.00.

BULLS 475.00-585.00, PUREBREDS 560.00-675.00.

### New Holland Horses

New Holland Sales Stables

New Holland, PA

Monday, Nov. 16, 1998

Report Supplied By Auction

242 HEAD. MARKET STEADY. WORK HORSES 675.00-1075.00.

DRIVING HORSES 475.00-1450.00. RIDING HORSES 435.00-960.00.

REGISTERED RIDING 575.00-1625.00.

KILLERS, HEAVYWEIGHTS 600.00-675.00; LIGHTWEIGHTS 329.00-349.00.

PONIES 135.00-400.00.

LARGE PONIES 450.00-410.00.

COLTS 155.00-385.00.

## Weaver Insurance Agency

'We're Here To Serve'

### FARMERS



Tired of Paying High Insurance Rates On Trucks You Seldom Use?

We Offer Competitive Prices On Trucks From Pickups to Tractor Trailers

We Offer All Types Of Farm and Agribusiness Insurance

Please Call For Quotations or Information.

Carol - Roger Slusher - Cindy  
248B Maple Ave., Quarryville, PA 17566

(717) 786-1711 (800) 882-1415

# Commitment to Agricultural Industry

Our name alone tells you where our interests lie.

We're locally-owned and operated. We know Lancaster County and can respond with timely answers to your loan requests.

Whether you need financing for buildings, land, livestock or machinery, working capital or a loan tailored to specific needs, look to the bank that is committed to your industry and has been for more than 135 years. **Bank of Lancaster County.**

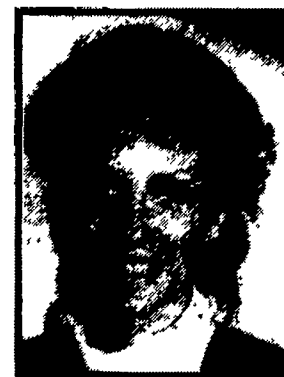
At Bank of Lancaster County, we take pride in providing our customers with exceptional service targeted toward their specific financial needs. We understand your business. And, we're committed to developing long-term relationships.

Our Agricultural Lenders are available to meet with you at a time that fits your schedule . . . on your farm.

Why not give Stan Michonski or Mary Henry a call? We're looking forward to talking with you about banking on your terms . . . on your farm.



**Stan Michonski**  
Assistant Vice President  
Agricultural Lending  
Call (717) 581-6020



**Mary Henry**  
Assistant Vice President  
Agricultural Lending  
Call (717) 464-4520



**Bank of Lancaster County, N.A.**  
The Better Bank.



Member F.D.I.C.