

PRODUCE MARKETS

Phila. Vegetable PHILADELPHIA Terminal

Prices as of 18-NOV-98
 Provided by: Fruit and Vegetable Market News, Federal-State Market News Service, USDA.

Phone: (215) 597-4536 Fax: (215) 336-0355

Clear 40-61 NA-FV020

VEGETABLES ---ARTICHOKES: ctns CA 48s 35.00 lge lse 28.00 --- ASPARAGUS: 11 lb ctns/crts bchd PE lge 18.00-20.00 ---BEANS: MARKET SLIGHTLY HIGHER buctns/crts FL Round Green Type 16.00-20.00 mostly 18.00 few 22.00 poor cond. 2.00-3.00 GA Round Green Type 15.00-16.00 --- BEETS: MARKET ABOUT STEADY ctns/crts bchd TX 12s 9.00-10.00 25 lb sks lse CD 4.00-4.50 ---BROCCOLI: MARKET ABOUT STEADY ctns CA bchd 14s 9.00-10.00 few 12.00 bchd 18s 9.50-10.50 Crown Cut 12.00 ---BRUSSELS SPROUTS: 25 lb ctns CA 18.00 --- CABBAGE: MARKET SLIGHTLY HIGHER 1 3/4 bucrts & 50 lb ctns DE Round Green Type med 8.00-9.00 NC Round Green Type med 8.00-9.00 NJ Round Green Type med 6.50-7.00 NY Round Green Type med 8.00-8.50 Red Type sml-med 9.00-10.00 PA Red Type med 10.00 50 lb sks CD Round Green Type lge 5.50 NY Round Green Type lge 5.00-5.50 1 3/4 bucrts & 40 lb ctns NC Savoy Type med 12.00 NY Savoy Type med 9.00-10.00 ---CARROTS: MARKET ABOUT STEADY sks 48 1-lb flmbgs CA Topped med-lge 11.00-11.50 mostly 11.00 sks 16 3-lb flmbgs CA Topped med-lge 11.50 sks 10 5-lb flmbgs CD Topped med-lge 7.00-7.50 50 lb sks lse CA Topped jbo 12.00-13.00 mostly 12.00 CD Topped jbo 7.50-9.00 mostly 8.00 ctns bchd CA Bunched 24s 10.50 ctns 24 1-lb flmbgs CA Baby Peeled 16, 50-17.00 ctns 20 1-lb flmbgs CA Baby Peeled 14.00 ---CAULIFLOWER: ctns flmwrpd CA 12s 12.00-15.00 mostly 13.00 ctns jacket pkd NY 10s 8.00 11s 8.00 --- CELERY: MARKET ABOUT STEADY ctns CA 1 1/2 dz 13.00 2 dz 11.00-14.00

mostly 12.00-13.00 2 1/2 dz 12.00-14.00 mostly 14.00 some 11.00 flmbgs 30s 15.00-16.00 ---CHINESE CABBAGE: 40 lb ctns NJ Nappa 9.00 ---CORN-SWEET: wbcrts FL Yellow fr cond 8.00 White fr cond 8.00 ---CUCUMBERS: WAXED 1 1/9 buctns/crts FL med 16.00 fr qual 12.00 GA med ord qual 8.00-9.00 --- EGGPLANT: MARKET LOWER 1 1/9 buctns/crts FL med 9.00-10.00 mostly 10.00 GA med 10.00 ---ENDIVE: MARKET HIGHER 1 1/9 buctns/crts FL 12.00-13.00 ctns CA 24s 13.00 --- ESCAROLE: MARKET HIGHER 1 1/9 buctns/crts FL 12.00-13.00 ctns CA 24s 15.00 fr cond 11.00-12.00 ---GARLIC: MARKET LOWER 30 lb ctns CA White super col 52.00 col 47.50 super jbo 36.00 exjbo 30.00 jbo 25.50 ---GREENS: MARKET ABOUT STEADY ctns bchd CA Kale 24s 10.00 ctns/crts bchd CA Swiss Chard 10.00 Red 10.00 GA Collard 6.00 NC Collard 5.50-6.50 Kale 6.50 Mustard 7.00 Turnip Tops 7.00 Rape 7.00 NJ Collard 5.00-6.50 mostly 6.00 Kale 6.00 Swiss Chard 8.00 TX Kohlrabi 10.00 Red 10.00 Swiss Chard 8.00 some 10.00 VA Collard 5.50-6.00 Kale 6.00 ctns lse CA Kale Flowering 24s 10.00-11.50 20 lb ctns MX Rappini 20.00 ---LETTUCE-ICEBERG: MARKET WRAPPED 24S SLIGHTLY LOWER, OTHERS ABOUT STEADY ctns AZ 24s 8.00-9.00 CA 24s 8.00-9.50 mostly 9.00 fr appear 7.00-8.00 Wrapped 24s 9.00-11.00 mostly 10.00 fr cond 5.00-8.00 ---LETTUCE-OTHER: MARKET CA GREEN AND RED LEAF SLIGHTLY LOWER, OTHERS ABOUT STEADY ctns CA Green Leaf 24s 8.00-10.00 mostly 8.00-9.00 Red Leaf 24s 8.00-10.00 mostly 8.00-9.00 NJ Boston 24s 8.00 flt ctns NJ Bibb 7.00 3 lb ctns CA Mesculin Mix 7.50-9.00 ---LETTUCE-ROMAINE: MARKET ABOUT STEADY ctns CA 24s 8.00-10.00 mostly 9.00 NJ 24s 6.00-7.00 ctns 12 3-count pkgs CA Hearts 12.00 1.3 bucrts CA 24s some 12.00 ---MUSHROOMS: MARKET STEADY 10 lb ctns PA lge 11.50-12.00 med 8.50-9.00 4 qt bkts PA med-lge 5.00 sml-med 4.00 5 lb ctns PA Oyster 15.50-16.00 Cremini 7.00 Portobellas 7.00 3 lb ctns PA Shiitake 12.00 fair qual 9.00 ctns 10 12-oz trays flmwrpd PA 9.00 ctns

10 10-oz trays flmwrpd PA 8.00 ---OKRA: OFFERINGS INSUFFICIENT TO QUOTE ---ONIONS GREEN: MARKET OTHERS ABOUT STEADY ctns bchd CA 48s 8.00-8.50 fr cond 7.00 MX 48s 7.00-7.50 NJ 36s 7.00 ctns/crts bchd CA Leeks 12s 12.00 NJ Leeks 12s 11.00 --- PARSLEY: MARKET ABOUT STEADY ctns bchd CA Curly 60s 12.00 fr appear 9.50 Plain 60s 13.00 FL Curly 60s 13.00 Plain 60s 13.00 TX Curly 60s 13.00-14.00 Plain 60s 13.00-14.00 Root 12s 15.00 --- PARSNIPS: MARKET ABOUT STEADY ctns 12 1-lb flmbgs CD 9.50 20 lb flmbgs lse CD 13.00 ---PEAS GREEN: 10 lb ctns CA Snow Peas 20.00 GU Snow Peas Decalaxed 18.00-20.00 ---PEAS OTHER: OFFERINGS INSUFFICIENT TO QUOTE ---PEPPERS: MARKET GREEN BELLS HIGHER, OTHERS ABOUT STEADY 1 1/9 buctns/crts CA Bell Type Green exlge 10.00-11.00 FL Bell Type Green exlge 10.00 lge 8.00 med 7.00 poor cond 1.00-3.00 Mxd Red And

Green lge 5.00 some 7.00 GA Bell Type Green exlge 10.00 lge 6.00-8.00 med 5.00-7.00 Mxd Red And Green lge 5.00 TX Bell Type Green exlge fr qual 6.00-7.00 lge 6.00 med fr qual 4.00-5.00 15 lb ctns CA Bell Type Red lge 16.00-18.00 5 kg ctns NL Bell Type Red 80-100mm few 27.00 ---PEPPERS OTHER: 1/2 and 5/9 buctns/crts FL Hungarian Wax few 11.50 Jalapeno 11.50 Long Hot few 12.00 1 1/9 buctns/crts FL Long Hot 13.00 --- PUMPKINS: OFFERINGS INSUFFICIENT TO QUOTE ---RADISHES: MARKET HIGHER ctns tpd 30 6-oz flmbgs FL Red 12.00-13.00 MN Red fr cond 6.00 ctns tpd 14 1-lb flmbgs FL Red 13.00 MN Red fr cond 6.50 ctns bchd PA Red 24s 6.00 ---RHUBARB: OFFERINGS NONE ---RUTABAGAS: OFFERINGS INSUFFICIENT TO QUOTE --- SPINACH: MARKET HIGHER ctns bchd CA Flat 24s 10.00-12.00 1 2/5 bu crts CA Flat 10.00 ctns 12 10-oz flmbgs CD Savoy 9.50 cel crt NJ Savoy 7.00-8.00 mostly

7.00 ---SQUASH: MARKET ABOUT STEADY 1/2 & 5/9 buctns/crts GA Yellow Straightneck sml-med 8.00 med 6.00 4/7 buctns MX Zucchini med 6.00 --- SWEET POTATOES: MARKET ABOUT STEADY 40 lb ctns NC U.S. One Jewels med 10.00 1/2 buctns NJ Yellow Jersey med 10.00 fr qual 6.00 CURED 40 lb ctns NC U.S. One Jewels med 11.00-12.00 mostly 12.00 fr appear 9.00-10.00, fr qual 5.00 ---TOMATOES: MARKET ABOUT STEADY 25 lb ctns FL 85% U.S. One or Better Mature Greens light red-red 5x6s 14.00-16.00 6x6s 12.00-14.00 mostly 13.00-14.00 NJ Vine Ripes light red-red lge 13.00-14.00 med 12.00 Local Repack 85% U.S. One or Better Mature Greens pink-light red 5x6s 18.00 6x6s 17.00 5 kg flts NL clusters few 18.00 ---TOMATOES, CHERRY: MARKET ABOUT STEADY flts 12 1-pt bkts FL light red-red 12.00 MX light red-red 11.00-13.00 mostly 12.00 --- TOMATOES, PLUM TYPE: MARKET ABOUT STEADY 25 lb ctns FL light-red 23.00-24.00

BINKLEY & HURST BROS. INC.
 133 Rothsville Station Rd. • Lititz, Pa 17543
 717-626-4705

WE SHIP PARTS DAILY

• UPS • FedEx • TRUCK FREIGHT
 • AIR FREIGHT • B&H DELIVERY SERVICE

Machinery Sales
 M-F 7 to 5 Sat. 7 to 11:30
PARTS DEPT. HOURS:
 Monday-Friday 7 AM to 5 PM
 Saturday 7 AM to Noon
After Hours Emergencies
 Call (717) 626-0885
 (717) 626-5159
 Sun. Closed - Lord's Day

CASE IH *Eager Beaver* *DeGelman* *Scott*

CASE IH QUALITY OIL

99¢/qt. #1 DIESEL ENGINE OIL

30 GALLON DRUMS
 PART #253782A1 **15w/40**
 PART #407360R4 **OR 30W**

FLISKY

"BETTER-BILT"

MONOSEM

SUNFLOWER
Radline
 TRAILER REPAIR PARTS

RHINO
 by Athens

KINZE
 CORN PLANTERS & GRAIN CARTS

KELDERMAN
 AIR RIDE

WOODS
 Division of Heston Corporation
 MOWERS & BLADES

ATHENS
 Disk Harrows
 Coulters
 Chisels
 Chisel Plows

Busy As A Bee?

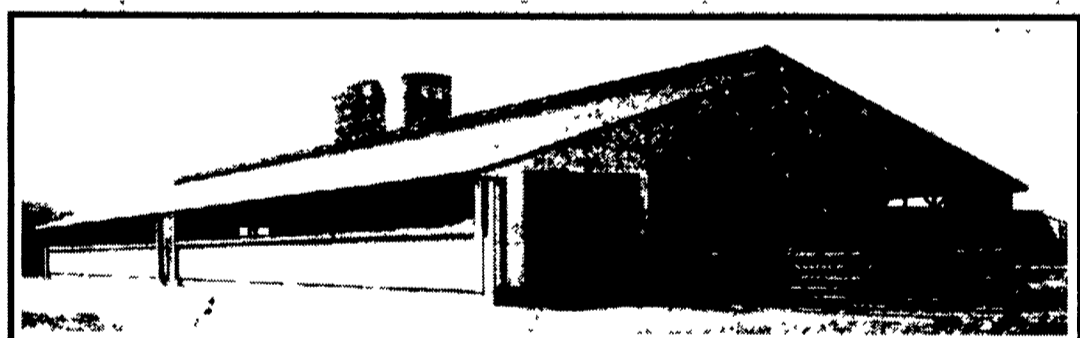
No Matter Where You Are - You're Never Too Far!

Your Parts Are Just A Phone Call Away!

This Is Our Fax No. 717-626-0996
 If You Have A Fax No., Let Us Know, We Can Communicate With You By Fax.

KEYSTONE CONCRETE PRODUCTS INC

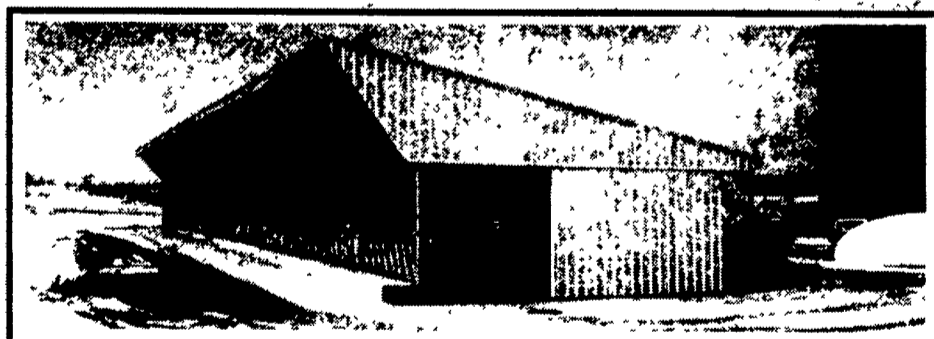
477 East Farmersville Rd.
 New Holland, PA 17557
(717) 355-2361



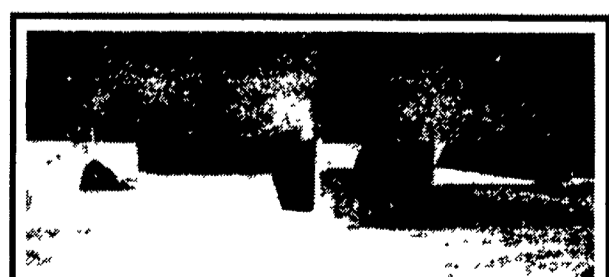
Concrete Slatted Free Stall Barn



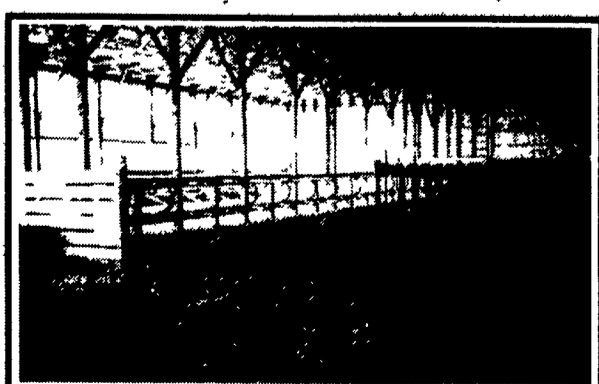
Slatted Beef Barn



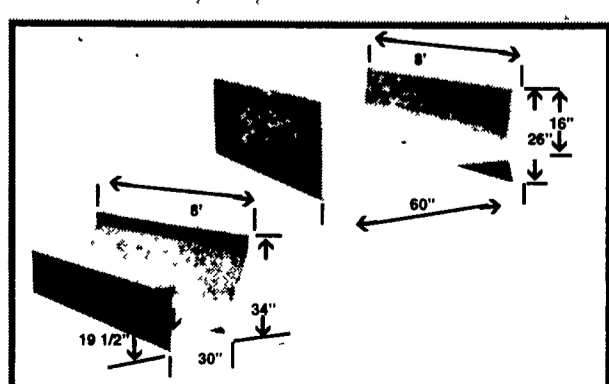
Slatted Heifer Barn



Precast Concrete Bunker Silos or commodity buildings built to suit your needs. Bunkers available in 8 Ft. or 12 Ft. High.



Slatted Free Stall Barn



Concrete Feed Bunks