

Sale Reports

REAL ESTATE SALE

A Public Auction of real estate was held November 7 in Lower Augusta Twp., Northumberland Co., Pa.

The #2 tract of land contained 48.56 acres of open and wooded land which was sold for \$57,000. The #5 parcel of land contained 5.01 acres which was a building site and sold for \$26,000. The #6 parcel of land included 6.12 acres which was also a building site and it brought \$26,000.

Hassinger & Courtney conducted the sale.

HESS SALE

A Public Auction of farm machinery was held November 7 by Carl R. and Martha Hess, 230 Elizabethville, R.D., Pa. between Elizabethville and Berrysburg.

Some prices were: A.C. 8010 tractor \$21,800, Minn. Molene 955 tractor \$5000, Minn. Molene 302 tractor w/loader \$3000, Farmall 460 tractor \$2300, Farmall 504 tractor #2800, 3

gravity bin wagons \$1200 to \$1600, Rhino 76 transport disc \$1800, Case 5500 chisel plow \$1675, J.D. 8200 grain drill \$1600, Westfield 31 ft. grain elevator \$1550, 1888 \$20 gold piece \$510, 1924 \$20 gold piece \$580 and 1854 \$3 gold piece \$495.

Deibler & Shoop managed the sale.

BRENIZE SALE

A Public Sale of antiques was held November 7 by Daisy R. Brenize, 15153 Paxton Run Rd., Shippensburg, Pa. in the village of Mowersville. There were 160 registered.

Some prices were: pink Depression pitcher \$540, 6 pink Depression glasses \$160, pink Depression cream & sugar \$390, M & T Miller crock with blue leaf \$1550, weather vane with lightning rod, \$290, 2 oak high-back beds \$480 & \$775, 2 oak sideboards \$630 & \$680, grain painted jelly cupboard \$450 and dry sink \$350.

Terry L Shetter and Kelly A. Shetter were the auctioneers.

SPENCER SALE

A Public Auction of

equipment was held November 7 by Scott Spencer, off Rt. 220 at New Albany, Pa.

Some items sold were: 3 pt. hitch snow blower \$1950, Toby cattle feeder on rubber \$2200, cattle scales \$350 and 26 ft. enclosed trailers 5th wheel \$850, \$1350 and \$900.

Shamrock Auction Service managed the sale.

STUMP SALE

A Public Auction of real estate and personal property was held November 7 by Helen and Edna Stump, 3 Long Road, Lenhartsville, Pa. in Berks County.

The 120 acres with a 10 room house, barn, garage and 5 outbuildings was sold for \$500,000.

Other prices were: split oak basket \$115, small York rake \$200 and Bolens 8 h.p. riding mower \$275.

David Loeb conducted the sale.

NOLL & PARVIN HOMESTEAD SALE

A three-piece oak bedroom suite brought \$1,500 Wednesday at a public auction of antiques, household good, primitives and tools held for Mary L. Noll, the Parvin Homestead and others at Horst Auction

Center, Ephrata.

There were 399 registered bidders.

Also sold were an oak china closet, \$900; an oak hall rack, \$900; and Empire chest, \$150; a wooden parts bin, \$180; a modern dining room suite, \$200; an oak slant-front desk, \$140; a plank-bottom settee, \$110; a 12-light Dutch cupboard, \$220; a large copper apple butter kettle, \$275; a large gray feed bin, \$120; a white cupboard, \$225; a Windsor arm chair, \$500; an early ladder-back rocker, \$300; a painted rocking horse, \$225; a folding drying rack, \$125; a roller organ, \$160; a quilt rack, \$150; a small bench with back, \$150; a cottage dresser base, \$140; and an Empire chest of drawers, \$190.

Also, an oak washstand, \$100; a spool cabinet, \$500; an oak parts cabinet, \$180; a Windsor-style rocker \$100; a set of five paint-decorated chairs, \$850; a platform rocker, \$210; a Victorian dresser, \$225; a bronze statue, \$625; a Victorian hanging light, \$200; another hanging light, \$125; a shelf clock, \$140; a Lionel train set, \$500; an Oriental china set, \$130; an

iron pointer dog, \$110; children's books, \$105; other books, \$190; a lot of photos, \$400; basket carpet balls, \$155; a set of post-cards, \$450; a four-piece of butcher tools, \$725; a stoneware jar, \$170; and a photo album, \$155.

The sale was conducted by Horst Auctioneers, Ephrata.

KURTZ SALE

A public sale of antiques, household goods, primitives and tools was held Saturday for Earl L. Kurtz, 310 S. Millbach Road, Mill Creek

Township, Lebanon County.

There were 340 registered bidders at the auction which was conducted by Horst Auctioneers, Ephrata.

Sold were a Hoosier kitchen cabinet, \$1,600; a hightop dry sink, \$950; a three-piece oak bedroom suite, \$850; an upright piano, \$530; a china closet, \$400; a three-piece Depression bedroom suite, \$475; a square oak extension table, \$360; a one-door cupboard, \$260; a blanket chest, \$250; a wood box, \$250; a

1956 four-door Pontiac Sedan, \$1,050; a ruby kerosene parlor light, \$410; a wallpaper box, \$750; a wooden doll house, \$525; a tray of marbles, \$575; a Jeannette Aris glass set, \$340; a Depression water set, \$250; a redware planter, \$400; a gaudy pitcher, \$450; a small basket, \$300; a toy stuffed horse, \$400; a child's stroller, \$290; a copper kettle, \$330; a glass candy container, \$525; a Turk yellowware set, \$240; and a Conestoga wagon jack, \$130.

AMERICAN DAIRY CATTLE REGISTRY'S 5th LINEBACK PROMOTION AUCTION

10:30 A.M.

Saturday, November 21, 1998

Middleburg Livestock Auction, Middleburg, PA

FEATURING:

- * 20 Open heifers and young calves from two farms in NY. These farms have been breeding for many years and have production records over 25,000
- * 2 Fresh Gloucester cows: one red and one black.
- * Several fresh cows and springing heifers from PA.
- * Breeding age bull.
- * 3 calves from WI
- * Grade Lineback short bred, open heifers.

For More Information:

Sale Contact: **Barnard Baily, West Chester, PA (610) 793-1861**
American Lineback Registry,
Ann Van Gheem, Co-Secretary, Shawno, WI (715) 758-8205
Middleburg Livestock Auction (717) 837-2222

Also Selling: 200 hd. heifers already consigned, plus more to come. Turn your heifers into cash & take advantage of the strong heifer market. Fresh heifers, bred heifers & open heifers.

ANNUAL FRIDAY AFTER THANKSGIVING

Antique Toy Auction

10 A.M. FRIDAY, NOVEMBER 27, 1998

(Exhibition From 8 A.M. Auction Day Only)

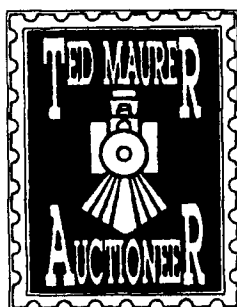
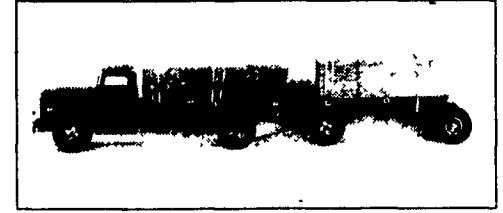
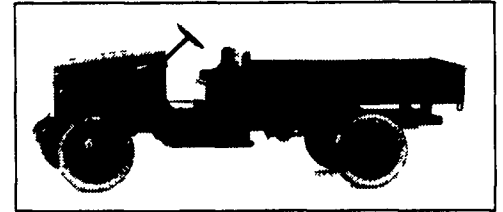
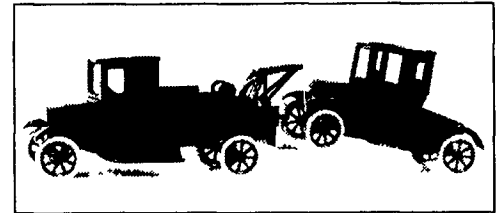
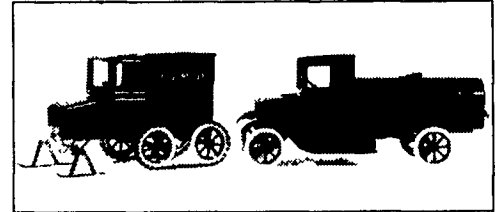
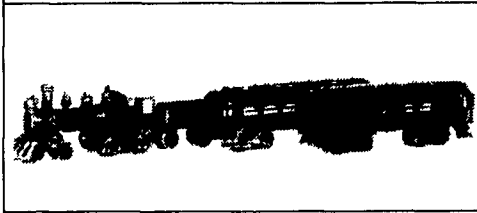
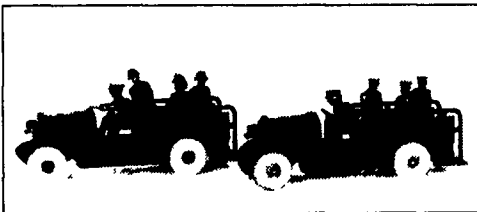
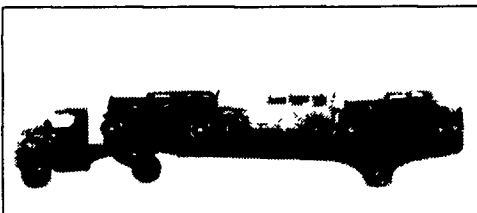
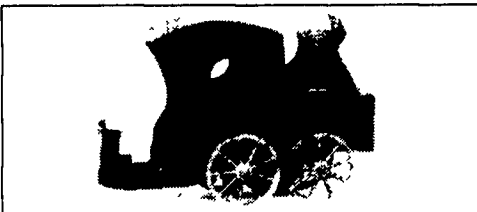
RIDGE FIRE CO. PAVILION

Along Rt. 23, Between Phoenixville, PA & Rt. 100

Beautiful line of early style Buddy "L" toys, Many professionally restored by Buddy "K", of Hellertown, PA. 8 Cowdery - Buddy Flivvers, just like new! Smith Miller Macks. Buddy "L" steam loco and freight cars. Numerous Marx tin litho cars & trucks. Hubley - Kenton - Dent - Champion - Kilgore cast iron transportation toys.

SPECIAL MENTION - Super selection of early & rare cast iron floor trains 1890 - 1930. These hard to find toys are taken from a large collection that was used to write a book on iron trains. We have all kinds, and they look great under a Christmas tree or over your fireplace.

A 10% Buyer's Premium Will Be Applied.



TED MAURER (AU-000593-L)
Successful Auction Management
 Phone 610-323-1573 or 610-367-5024
 1003 Brookwood Dr., Pottstown, PA 19464