

### 36 REAL ESTATE

115+ Acres near Little Britain, large house & pole barn. \$450,000. 610/444-9699.

13 1/2 Acres, Wooded, Borders State Game Land, Lycoming County. Bear, Deer & Turkey. \$25,000. (717)442-4279.

1 1/2 Story, 2BR Home, \$40's. Also, 3BR Ranch w/ Detached 30x40 2-Car Garage & Established Bakery Business. Many Amenities. \$90's. Call (717)436-9712.

159 acre horse/cattle farm, 2 houses, 18 stall horse barn, 60'x100' indoor arena, 140'x240' outdoor lighted arena. Many other barns and out buildings, near state park riding trails. \$325,000, Motivated Seller. Green Bay, VA, (804)767-4200.

159 acre horse/cattle farm, 2 houses, 18 stall horse barn, 60'x100' indoor arena, 140'x240' outdoor lighted arena. Many other barns and out buildings, near state park riding trails. \$325,000, Motivated Seller. Green Bay, VA, (804)767-4200.

1750 Sq Ft Barn For Storage or Work Space. Guthrieville. (610)269-1695.

265A dairy/beef farm, 100 productive, 100 well-fenced pasture with streams, wooded acreage. (2) barns, milking parlor, sheds, shops, 5 bedroom house. Bedford Co. \$425,000. 814-623-5382

27+ Acres Huntington County, Alexandria Area. Cleared Land, Perc Approved, Beautiful View & Private. \$54,000. Roger Hoover, RD#3, Box 462-B, Tyrone, PA 16686 (814)684-5302.

2BR house on 5A mountain ground Jacks Mountain, Belleville, PA. 34x30 barn, heated 3-car garage 28x48. \$130,000 firm. 717/935-5556 after 9pm.

312A operating farm, excellent buildings, productive land, excellent hunting, attractive setting. Borders PA (Steuben Co., NY) 607-356-3200

4 BR Rancher, attached 2 car garage, 13 + acres, pond, private setting, \$140,000 Danville, PA 717-286-3136.

55x10 office trailer, new heater & central air, all new interior, exterior needs work, \$2500. 610-353-9663 anytime

64 Acres Livestock Poultry Farm, 200 head feed lot cap., 3 Silos, slatted floors, newly renovated poultry breeder house. 48 additional acres available. 4 Bedroom House. Beautiful private setting, 4 miles from Millersburg. \$305,000 OBO. After 6pm. 717/692-2675

8+ Acres, Great Hunting, Bear, Deer, Turkey, Trout Stream Borders State Game Lands, Perc Tested. Master/Ellenton Area. Lycoming (717)924-3618.

FOR SALE: 243 acre farm, Newberry Township, York County, Buck Shelley 717-266-2078 or 717-766-4564.

For Lease: 7200 sq.ft. steel building on 2A lot, (3) 14' OH, doors each side. Office & parts space plus service pit. Call Mark Herr HORNING FARM AGENCY, INC. 610-286-5183

For Sale by Owner: 270 Acre Tioga Co dairy farm. 150A tillable, 2 homes, recreational pond. 717/549-7281.

House trailer good for hunting & camping, kitchen, bath, 2BR, den. Needs cleaning & painting. First \$1000 takes it. 410/486-5970.

### NORTH CAROLINA FARM

266 acres land, 115 acres cultivated, 151 acres woodland. Timber hasn't been harvested since 1974. No buildings. Located in Tyrrell County. 2458' of paved road frontage. \$210,000  
**252/796-0235**

### So. Northumberland Co. & Surrounding Counties (Broker Owned)

6.9 Acres, 2 BR home, fireplace, 2 car garage, small barn, mostly wooded \$82,900  
9.6 Acres, 4 BR home, 2 car garage, barns & stream \$92,900  
10 acres, house & barns Owner Financing Available **REDUCED! \$82,900**  
48 acres, 36 wooded, 12 acres tillable \$62,000  
127 acres, house & barns, 80 tillable \$300,000

**PETER B CORTELYOU**  
Real Estate Herndon, PA 17830  
Peter B. Cortelyou, Broker  
**717-425-9177**



**YOUR FARM IN THE VALLEY. 73 ac. woodland for hunting, trout stream for fishing, modern 3 bedroom home (1984), modern dairy (1987), large implement shed. 67 ac. fertile farmland. Owner says "SELL", call for directions.**

Sugar Valley: Clinton Co., PA. 116 acres mostly tillable, 8 room brick house & barn. Call for details 717-872-8924 6-6:30 am  
**KEN GREIDER, Realtor**  
**717-872-9002**



**SNYDER COUNTY PRIVATE COUNTRY ESTATE**  
40 miles north of Harrisburg. New 3,700 sq ft log/frame house, 56 x 66 barn on 5 acres,  
**\$325,000**

**52 Ac Farm, 4 BR house, bank barn**  
Dornsife, North'd Co. **\$175,000**

**LEROY HIBBS REAL ESTATE**  
**(717) 837-0265**

### YORK COUNTY FARM FOR SALE

**215 Acre Poultry Farm with a creek running through!**  
**This farm consists of 2 dwelling houses, a two story bank barn, a 68,000 capacity layer cage house. Shows excellent return.**

For more details call  
**Clay Mumma**

**367-5155**



### Juniata Co. Real Estate Sales

Lancaster County: 8+ acres zoned agriculture Could be your horse farm or any agn use Just minutes 1283, quick commute to Lancaster or Harrisburg **Asking \$149,900.**  
33+ Acre zoned Ag, multi use buildings, currently egg processing plant, just off 1283, Rheems exit

**JUNIATA COUNTY Executive log home** on 4+ acres w/commanding southern view on private road near Rt 322, 35 interchange

**8+ Acre shade mountain, good hunting land, easy access Borders SGL \$25,000.**  
**Choice 10 Acre Farmette, 3 BR home, large bank barn, fenced meadow w/spring fed stream, ideal horse or hobby farm Just \$127,000.**

**Just Listed: 174 acre mountain land, good hunting, campsites, some marketable timber, near Landisburg, Perry Co Only \$138,000**

**Rustic 3 BR log Home** on over 3 acres, both shade & garden areas Private but only minutes from town. **\$125,000.**

**Almost New 3 BR (DW) rancher** along Rt 35 in McAlisterville All large rooms & 2 baths Move right in for **\$59,900.**

Call **Charlie Brooks - 717-436-8431**  
**R M Walters Real Estate**  
**717-436-8839**

### ENDLESS MOUNTAIN REAL ESTATE COMPANY

#### TIOGA & BRADFORD COUNTIES

(717) 659-5684 [end@epix.net](mailto:end@epix.net)

*Home, Camp or Investment*, spacious 2 story, 4BR home, renovations need completed, 2 car det. garage, 3+- acres, rural location, \$37,000. (#780)

*Nice Level Building Lot* containing 1 59+- acres, town sewer hook-up, electric, & NG available, good location outside small community, \$57,900. (#784)

*The Price is Right!*, 2 story farm house on 39+- acres, 3-4 BR, 1-3/4 baths, completely remodeled, 3 small sheds, good location on dead-end twp road, call for details on purchasing the house & 10+- acre, \$96,500. (#795)

*Pleasant Valley Views*, 30+- acres, mostly open w/some woods, small stream, electric/NG available, perk complete, Jackson Twp \$69,900 (#796)

**Check Us Out on the Web!**  
[www.nvo.com/end](http://www.nvo.com/end)

### Your Key to Sullivan County

**ROBIN Fiester** 717/525-3929  
REALTY SALES - APPRAISALS - RENTALS

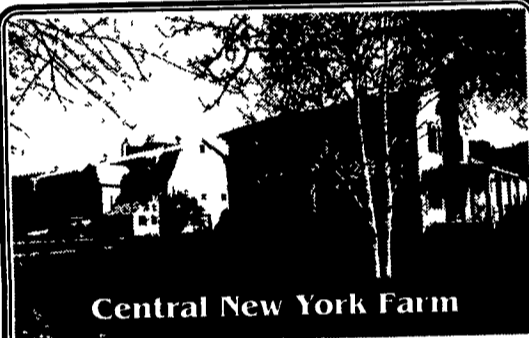
230 acres Historical, 10 room mansion house! 60 stall, remodeled dairy barn An opportunity like this doesn't happen often! Creek, swimming hole, many other possibilities! Call For Details.

Farmette - 12 3 acres, modern brick home, 3 BR, 2 b, fireplace! Large old bank barn for the horses, swimming pond and country setting! **\$154,900.**  
2 Br mobile, 2 acres \$37,500.

2 story cabin, wood floors, wood stove, country setting **\$34,900.**

Lake front cabin Cathedral ceiling, stone fireplace - fish from your deck. **\$129,900.**

email - [rrealty@epix.net](mailto:rrealty@epix.net) Next to the Post Office in Eagles Mere  
Telephone (717) 525-3929 • Fax (717) 525-3591



### Central New York Farm

430 acre 'Dairy of Distinction' farm near Interstate on US Rt 11; 165 ac tillable, rotational pastures. 70 tie stall barn with bedded pack addition; box stalls; concrete barn yard; heifer barn. TMR system; Boumatic pipeline. 5 bdr Georgian colonial home w/apr and 3 bdr home, both in excellent condition.

Reply to Lancaster Farming,  
PO Box 609, Ephrata, PA 17522

### LANCASTER COUNTY

**FARMETTE. OLD HOLTWOOD RD.** Large 4 BR frame dwelling, w/large barn & 2-story block chicken house on 11 acres..... **\$175,000**

**ROOM FOR DOGS & HORSES:** You can own this 4 BR, 2 1/2 story with barn on 1.75 acres..... **Only \$140,000**

**75 ACRES TOP OF THE LINE:** You can build the outbuildings the way you want them on this top producing 75 Acres in beautiful southern Lancaster Co..... **Only \$477,000**

If you have a farm to sell call:

**Clarence Wenger**

(717) 575-0053 (Car), 717-299-4885 (Office)

**Town & Country**  
REALTY

1271 Litz Pike  
Lancaster, PA 17601

**Koch**  
REAL ESTATE & INSURANCE

120 East Avenue  
Wellsboro, PA 16901  
717-724-3500



**EXCELLENT CHOICE-** Dairy farm with 222 acres, 66 tie stalls, 4 silos, 3 barns, exceptional 3 BR home, subdivision possibilities. **\$279,500 #1587**

**WORKING DAIRY** with 187 acres with option to purchase more land, barn complete with 68 milking stalls, 37 heifer stalls, newer 3 BR home with a list of fine amenities, call for details. **\$244,500 #1523**

**HIGH POTENTIAL FARM!** 81+ acres off hard top road, fenced pasture, pond, silo, large barn and nice 3 BR home. **\$169,900.**

**FARMETTE 68± Acres.** Small stream, road frontage, 5 bedroom older farm house Barn and garage Potter County **\$71,500 R-178.**

**HUNTING CAMP 7 plus acres** All utilities, furnished Affordable. Be here come deer season Tioga County **\$25,900 R-174.**

**66 ACRES.** Mostly wooded ROW to property. Overlooks valley Ideal hunting land Electric available **\$33,000 R-176.**

**ELEGANT LIVING.** 4 bedroom, 2 baths, attached oversized 2 car garage JennAir kitchen, well landscaped Near Wellsboro **\$97,500 R-156.**

**Really Rural Real Estate** 135 W Main Street, Westfield, PA 16950  
814-367-2222 Fax: 814-367-5195

### PENNA/NEW YORK PROPERTIES

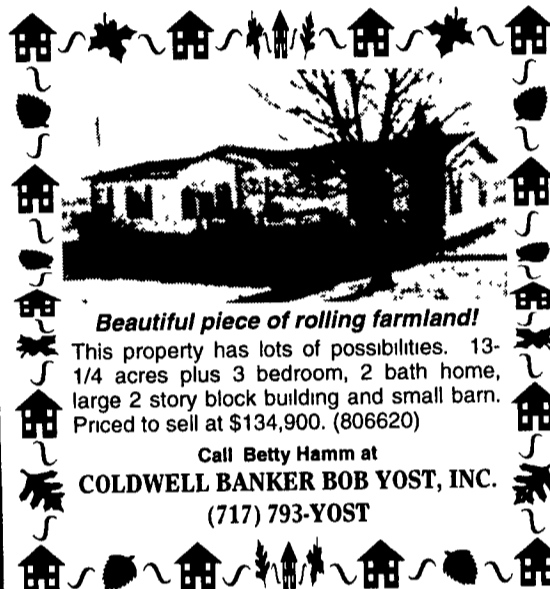
Small beef/hobby farm with lots of open land for crops and pasture Older farmhouse and barn need work. Offered with 107 acres; owner will divide and sell house, barn, and 20 acres for **\$59,500.**

Super hilltop view from this wooded hunting land not far from Osceola, PA Approximately 59 acres of ground bordering New York State.

Steuben County, NY. Approx 75 acre farm with two-story, 3/4 bedroom home in fair condition, 100 cow barn, mixed woods, pasture and tillable land All for **\$59,500 Broker owned**

Privacy is priority with this camp situated on 105 acres of prime hunting land Log-sided, one-room cabin provides the basics. Exceptional wildlife, wooded hilltop location just north of Elkland across the New York State line

**BEARD REAL ESTATE (814) 258-7117**  
403 East Main Street, Elkland, PA 16920  
[www.twintiershomes.com/Beard](http://www.twintiershomes.com/Beard)



### Beautiful piece of rolling farmland!

This property has lots of possibilities. 13-1/4 acres plus 3 bedroom, 2 bath home, large 2 story block building and small barn. Priced to sell at **\$134,900. (806620)**

Call Betty Hamm at  
**COLDWELL BANKER BOB YOST, INC.**  
**(717) 793-YOST**



### HOMESTEAD REALTY

Wellsboro 717-724-7161  
Mansfield 717-662-3287

#### TIOGA COUNTY

**HUNT WITH CAMERA OR RIFLE.** Wildlife galore. 62 acres, mostly wooded. Great views. Private and peaceful location just minutes from Wellsboro. Owner financing possible. **\$49,600. W-427.**

**WEEK-END RETREAT.** Hunting, hiking, fishing or snowmobiling. Just the right place for it all. Off Rt. 44 in the Black Forest area. **\$19,900. O-483.**

**VIEW OF THE VALLEY** from this 10+ acre building site, minutes from downtown Mansfield. Just the place to build your dream home. **\$18,000. S-114.**

**VIEWS FROM THE HILL** is just what you get from the deck of this cozy cabin. Nestled on 13+ acres with a stock pond and over 250 Christmas trees. Just reduced to **\$36,000. N-996.**

*Large Selection of Lots & Acreage - FREE Lists.*

**155 Acres Recreational Land,**  
Priced To Sell

**140 Acre Farm** w/4,000 sq. Ft. Stone Home, Large Barn, 2 Ponds, Small Stream, Excellent Buy at **\$650,000.** Ideal for Golf Course, Near I-80 & Two Major Roads

**45 Acre Beef Farm,** Excellent Outbuildings. w/2 Story Farm House, Priced at **\$189,000- Must Sell**

**100,000 Sq. Ft. Industrial Building**

Call **Coldwell Banker Wandell/Sofianek Realty**  
**717/784-8172**  
Ask for Burt