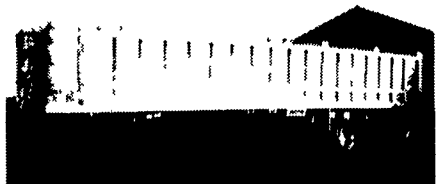




94 Ravens 40 Ft. Alum.

Frameless Dump, Roll Trap, Air ride, 24.5 Alum. Budds, Side Walls damaged from load drop, No Telescope

\$8,500
610-838-7271



92 Ravens Frameless Dump

40'x96"x64"; 2-Way Gate; 11 Rx24.5 On 8 Aluminium Wheels; Air Ride Spread Axles; Front Axle Lift, All New Tires, Brakes, Inspection. **717-354-3199**

KEIM
YOUR CHEVY GEO FAMILY

(717) 768-8225
(800) 223-KEIM

RT. 30 Lincoln Highway East
Paradise, PA 17562

YOUR TRUCK, VAN & 4x4 HEADQUARTERS
1-800-223-KEIM



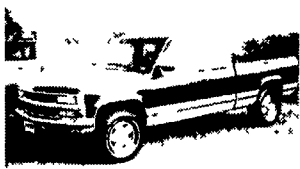
95 GMC EXTENDED CAB 4x4 1500
350 V8, AT, A/C, PW, PL
44,000 Miles



97 CHEVY EXTENDED CAB 3/4 Ton 4x4
Long Bed, Silverado Package,
Only 18,000 Miles



98 CHEVY CREW CAB
C3500 4 10 rear and locking, AT,
A/C, Cpoyenne Pkg, Stahl Body
Utility w/Ladder Rack



94 CHEVY EXTENDED CAB 4x4
1/2 Ton, Silverado, 350 V8, AT,
A/C, PW, PL, Cassette



95 CHEVY CARGO VAN G20
V8, Auto, AC
Only 39,000 Miles



95 CHEVY CHEYENNE EXTENDED CAB
4x4, 4.3 V6, AT, A/C,
Only 37K Miles



90 GMC PASSENGER VAN G20
350 V8, AT, A/C,
81,000 Miles

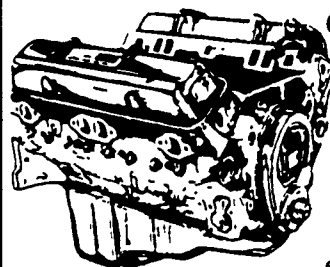


96 CHEVY K3500
Stake Body w/Power Dump,
Diesel, 5 dp, A/C, PW, PL, Posi-
rear, Only 26,000 Mi

JONES



We want your business.



GM GOODWRENCH
350 V8 1973-85
Part Number
10067353
New Engine - Not
Rebuilt
36 Month or 50,000
Mile
Warranty

New Engine - No Core Fee **\$1199⁰⁰**

WE'LL MATCH ANY COMPETITOR'S PRICE!

6.5L GOODWRENCH DIESELS
From **\$3,175**

Call 394-0711 for prices on other New or Remanufactured Goodwrench Engines. 2.5 Liter thru 454 cid. Gas and Diesel

Chevrolet - Pontiac - Olds - Buick - Cadillac - GMC

JONES GM PARTS CENTER

1335 Manheim Pike, Lancaster, PA 17604
Easily Located on Rt. 72 Just off of Rts. 283 & 30
Hours: Mon-Fri 7:30 a.m. - 9 p.m. Sat 7:30-3
(717) 394-0711



JONES BEST BUY 4X4'S TRUCKS

Lowest Stocking & Selling Extended Cab GMC Dealer In 7 States

PONTIAC • HONDA GMC TRUCK

1335 Manheim Pike, Lancaster
Prices based on straight sale, Tax & Tags extra. Trades accepted at actual cash value. Must present this ad at time of purchase for sale price.

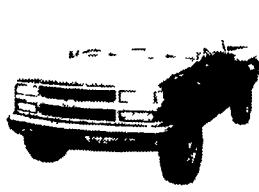
JONES
717-394-0711



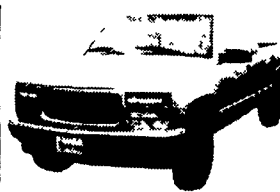
'92 GMC YUKON 4x4
AT, AC, 350, SLE #8165
Was \$15,500
SALE \$13,300



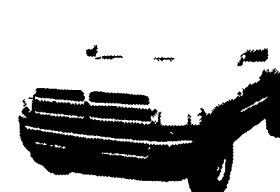
'95 JEEP CHEROKEE 4x4
AT, AC, V6, 4 DR
#8174 Was \$14,980
SALE \$13,500



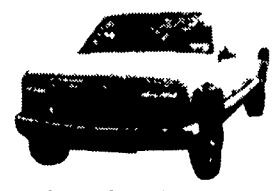
'97 CHEV K25 4x4
AT, AC, 350, Silverado,
8,600 GVW, 25K Miles
#8189 Was \$23,900
SALE \$22,300



'97 GMC K15 XCab 4x4
AT, AC, 4.3 Vortec, Low Mi.
#8163, Was 21,700
SALE \$19,800



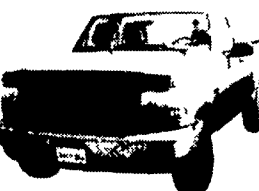
'94 DODGE 1500
AT, AC, V6, Clean
#8225 Was \$11,900
SALE \$10,150



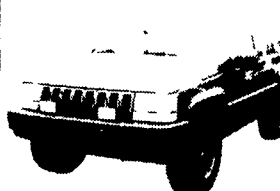
'98 GMC K25 XCAB 4x4 Diesel, 6.5 Turbo, SLE, AT, AC 13k Miles #8210 Was \$31,800
SALE \$29,200



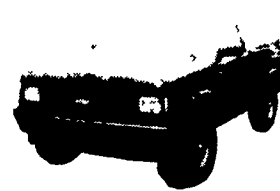
'97 DODGE 2500 CARGO VAN
AT, V8, 38k Miles
#8216 Was \$17,400
SALE \$14,400



'94 FORD F150 4X4
AT, AC, 300/6 Cyl, 8' Bed,
42,000 Miles
#8179 Was \$14,900
SALE \$13,300



95 JEEP GRAND CHEROKEE ORVIS
4x4, AT, AC, Loaded
#8226 Was \$19,900
SALE \$17,700



'94 CHEV S10 BLAZER 4X4
AT, AC, V6, Tahoe, 4DR #8133,
Was \$14,995
SALE \$13,100



'98 GMC SAFARI AWD
AT, AC, V6, SLX, 8 Pass, #8126
Was \$22,400
SALE \$20,477



'94 CHEV K15 XCAB 4x4
AT, AC, 350, Silverado
#8201 Was \$18,400
SALE \$15,850



'97 GMC YUKON 4X4 4 DOOR SLE
AT, AC, 19,000 Miles
#8128 Was \$30,500
SALE \$28,950



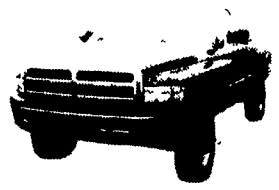
'97 CHEV K15 XCAB 4X4
AT, AC, V8, 38k Miles
#8202 Was \$22,150
SALE \$19,990



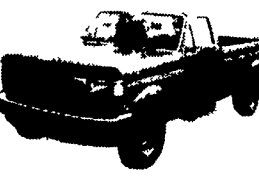
'88 CHEVY K15 4X4
AT, AC, V8, Silverado
#8173 Was \$8,975
SALE \$6,750



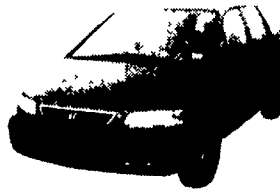
'97 CHEV ASTRO AWD
AT, AC, V6, 7 Pass.,
#8104 Was \$18,900
SALE \$17,000



97 DODGE 2500 4x4
V8, AT, AC, 25,000 Mi #8190
Was \$21,985
SALE \$20,155



95 FORD F150 4X4
AT, XLT, AC, V8, #8439
Was \$18,900
SALE \$17,000



'96 HONDA ODYSSEY VAN
EX, AT, AC, 27,000 Miles
#8157 Was \$20,800
SALE \$18,155



'97 CHEVY S10 XCAB 4X4
AT, AC, V6, 3rd Door,
#8102, Was \$18,885
SALE \$17,350